



Connection Solutions
4Workplaces

simon
connect

**general
catalogue**
2011 - 2012



K45 MINI-COLUMNS



Offices



Laboratories



DIRECT SNAP-FIT

4 K45 MINI-COLUMN MODELS

Simplicity

- 1 face



Compact

- 1 face for VDM
- 1 side for Schukos (ref. K01/..)



For 4 workstations Maximum capacity

- 4 faces



For 2 workstations Aesthetics

- 2 faces
- Oval shaped



Flush-mount power supply

(Cables embedded in paving or under raised floor)

K45 mini-columns are installed directly using floor attachment foot.



Supplied with all necessary materials for installation

With **only one reference**, the K45 mini-columns are supplied complete and installation-ready: foot for floor attachment, top and side covers and fastenings.

Mechanisms, electrical sockets and plates from page 72



Power supply through floor trunking

(Floor trunking 85x18 and 130x18)
The adaptor ALKA02/8 provides for K45 mini-columns installation at the bases of the floor trunking and power is supplied through the mini-column.

Floor trunking and bases on page 114



Configuration example of cable access through embedded tubes



	Quantity	Ref./Finish	Description
Covering	1	ALK115/8	K45 Mini-column No. 1, 70x60, one side for 5 mechanisms
Electrical sockets and plates	2	K11/9	K45 electrical socket, Schuko. Quick terminal connection, white
	2	K11/6	K45 electrical socket, Schuko. Quick terminal connection, red
	2	AC11	Connection block for multi-sockets
	1	KB96U/9	K45 flat V&D plate with 2 RJ45 connectors, Cat. 6 UTP, white
	1	K66	90° positioner for K45 VDM plates

Aluminium
Anodised

Pure white
Ral 9010

Graphite grey
Ral 7021

/8

/9

/14

K45 MINI-COLUMNS



1 Side 70x60 mm

- ALK115 /8** 5 K45 mechanisms per side
- ALK116 /8** 6 K45 mechanisms per side
- ALK117 /8** 7 K45 mechanisms per side

No limitations in housing mechanisms



2 Side oval 110x80 mm

- ALK724 /8** 4 K45 mechanisms per side
- ALK725 /8** 5 K45 mechanisms per side
- ALK726 /8** 6 K45 mechanisms per side

No limitations in housing mechanisms



2 Side square 80x80 mm

- ALK224 /8** 4 K45 mechanisms per side
- ALK225 /8** 5 K45 mechanisms per side
- ALK227 /8** 7 K45 mechanisms per side

Designed for electrical bases with screw terminal connections on 1 side and VDM on the opposite side.



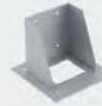
4 Sides 125x125 mm

- ALK544 /8** 4 K45 mechanisms per side
- ALK545 /8** 5 K45 mechanisms per side
- ALK546 /8** 6 K45 mechanisms per side

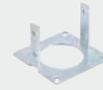
Does not allow electrical sockets with quick terminal connection on 2 of the 4 faces. No restrictions for other mechanisms.

Spare parts

Mini-column invisible fixed foot



RALK005 /8
1 Side ALK11x/8



RALK007 /8
2 Sides square
ALK22x/8



RALK006 /8
2 Sides oval
ALK72x/8



RALK008 /8
4 Sides ALK54x/8

End cover



RALK009 /8
1 Side ALK11x/8



RALK011 /8
2 Sides square
ALK22x/8

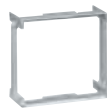


RALK010 /8
2 Sides oval
ALK72x/8



RALK012 /8
4 Sides ALK54x/8

K45 Installation accessories



K66
Mechanism Adaptation
K45 90° positioner for
VDM plates
[+ information page 80](#)



K106A/..
Protection
K45 circuit-breaker
[+ information page 76](#)



K100B/..
Multimedia Plates
1 VGA connector plate
[+ information page 82](#)



K11/..
Electrical sockets
Quick-connection terminals
[+ information page 74](#)



KB95U/..
VD plates
VD plate with connector
[+ information page 78](#)

Configuration example of cable access through floor trunking

Front face

Rear face



	Quantity	Ref./Finish	Description
Covering	1	ALK227/8	K45 Mini-column No. 2, 80x80, 7 mechanisms on each side
Electrical sockets and plates	4	K01/9	K45 electrical socket, Schuko, white
	1	KF04A/9	K45 plate with 10A bipolar automatic circuit-breaker, curve C, white
	1	KB8096U/9	K45 angled V&D plate with 2 RJ45 connectors, Cat. 6 UTP, white
	1	K66	90° positioner for K45 VDM plates
	1	K101B/9	K45 multimedia plate with 2 RCA audio connectors, white Screw connection
	1	K128B/9	K45 multimedia plate with 1 USB connector type A, female. Screw connection
	2	K122/9	K45 Multimedia plate for 1 XLR male or female connector, white
	1	KTA804/8	Base for tiled floor trunking
	1	ALKA02/8	Adapter for base
	1	TF21172/8	Aluminium trunking for paved floor

Technical details
[See page 170](#)



K45 COLUMNS



Easy to install

The column is secured to the ceiling by pressure, without the need for screwing into the ground or the structure.

Highly varied range

There are 4 different section models depending on the number of connection sides, from 1 to 4, in which an unlimited number of mechanisms can be installed.

Installation mobility

The columns are **secured by pressure** on the floor slab. They do not have to be bolted to the floor, and it is therefore very easy to reconfigure the distribution of workstations.



CIMA columns with finishes in white and graphite on page 34

Supplied with all necessary materials for installation

With only one reference, the K45 columns are supplied complete and installation-ready: floor attachment foot, ceiling trim, telescopic assembly for securing to the floor slab, aluminium covers and fastenings.

Mechanisms, electrical sockets and plates from page 72



i Configuration example of a column for a supermarket checkout



Covering	Quantity	Ref./Finish	Description
	1	ALK1100/8	Column, 70x60, one side, length 3 m.
Electrical sockets and plates	1	K11/9	K45 electrical socket, Schuko. Quick terminal connection, white
	2	K11/6	K45 electrical socket, Schuko. Quick terminal connection, red
	1	AC11	Connection block for multi-sockets
	1	KB8096U/9	K45 angled V&D plate with 2 RJ45 connectors, Cat. 6 UTP, white
	1	K66	K45 90° positioner for VDM plates

K45 COLUMNS

1 Side 70x60 mm

ALK1100 /8 1 side. 3 m.

No limitations in housing mechanisms

2 Sides square 80x80 mm

ALK2200 /8 2 Sides, square 3 m.

Designed for electrical bases with screw terminal connections on 1 side and VDM on the opposite side.

2 Sides oval 110x80 mm

ALK7200 /8 2 Sides, oval 3 m.

No limitations in housing mechanisms

4 Sides 125x125 mm

ALK5400 /8 4 Sides. 3 m.

Does not allow electrical sockets with quick terminal connection on 2 of the 4 faces. No restrictions for other mechanisms.

Fastening support length: 0.5 m

Column Extension 2 sides, square

Includes connector pins

0
Optional

ALK22P05 /8 0.5 m extension

ALK22P10 /8 1 m extension

ALK22P15 /8 1.5 m extension

Section length of the column: 3 m. Fastening support length: 0.5 m

Column Extension 2 sides, oval

Includes connector pins

0
Optional

ALK72P05 /8 0.5 m extension

ALK72P10 /8 1 m extension

ALK72P15 /8 1.5 m extension

Section length of the column: 3 m. Fastening support length: 0.5 m

Column extension 4 sides

Includes connector pins

0
Optional

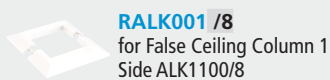
ALK54P05 /8 0.5 m extension

ALK54P10 /8 1 m extension

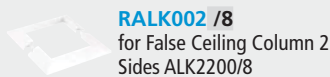
ALK54P15 /8 1.5 m extension

Spare parts

Ring trim



RALK001 /8
for False Ceiling Column 1
Side ALK1100/8



RALK002 /8
for False Ceiling Column 2
Sides ALK2200/8



RALK003 /8
for False Ceiling Column
2 Sides oval ALK7200/8



RALK004 /8
for False Ceiling Column 4
Sides ALK5400/8

Front cover



RALK013 /8
3 m for K45 columns ALK11X/8,
ALK22X/8 and ALK54X/8

RALK014 /8
3 m for K45 Columns
ALK72X/8

K45 Installation accessories



K66
Mechanism Adaptation
K45 90° positioner for
VDM plates
[+ information page 80](#)



K106A/..
Protection
K45 circuit-breaker
[+ information page 76](#)



K100B/..
Multimedia Plates
1 VGA connector plate
[+ information page 82](#)



K111/..
Electrical sockets
Quick-connection terminals
[+ information page 74](#)



KB95U/..
VD plates
VD plate with connector
[+ information page 78](#)