



Connection Solutions
4Workplaces

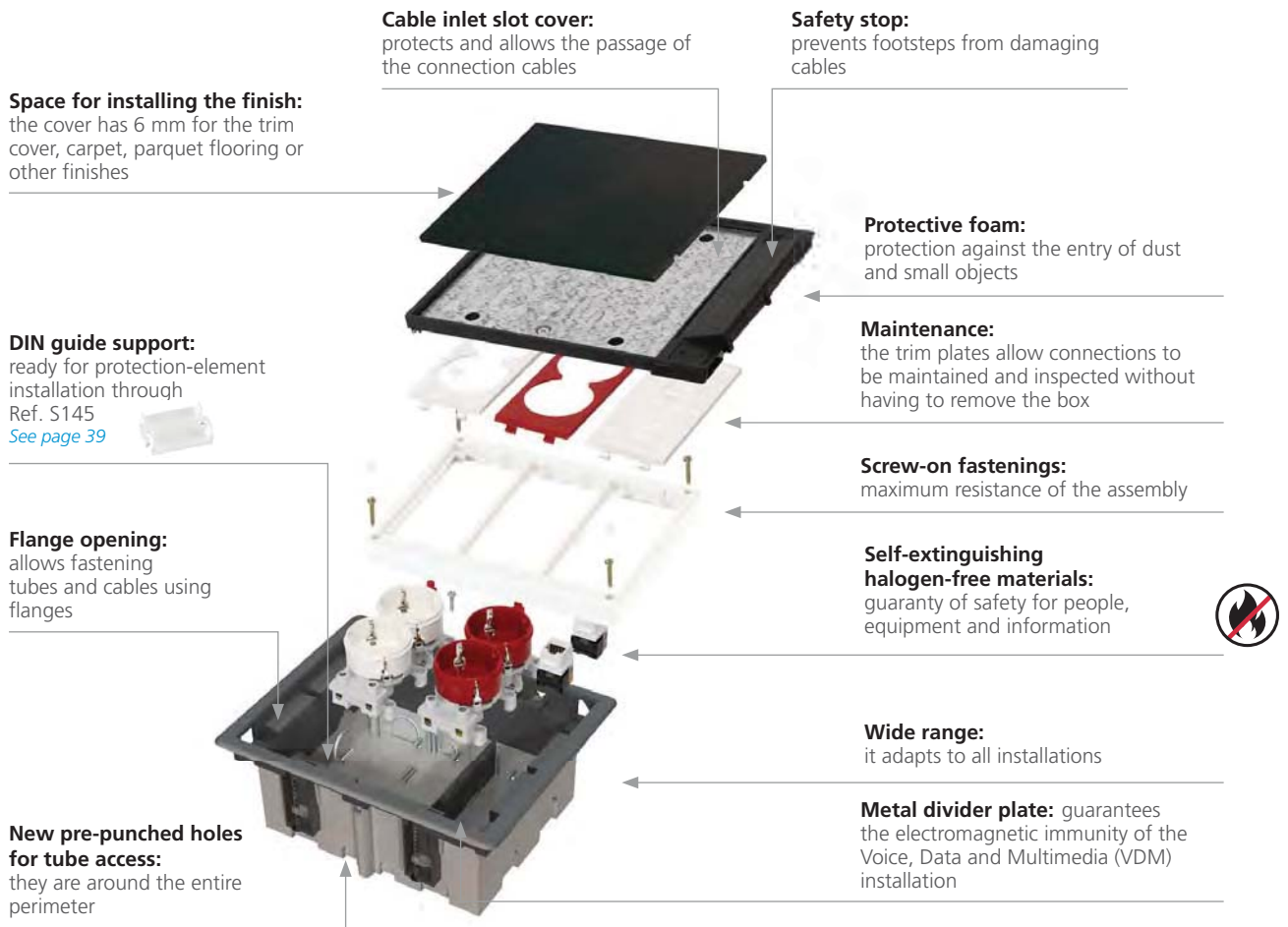
simon
connect

**general
catalogue**
2011 - 2012



CIMA FLOOR BOXES

Solutions for raised or tile floors



✓ **New pre-punched holes for tube intakes:**



Two new tube intake measurements of Ø 20 mm and Ø 26 mm.

✓ **Adjustable mechanism-protecting tray**

They are supplied in 2 different depths:

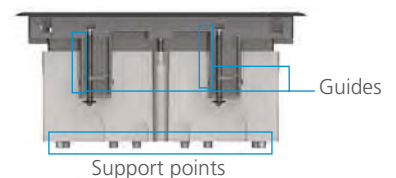


Paving
70 mm adjustable to 100 mm



Raised floor
90 mm adjustable to 120 mm

✓ **Greater stability**



The new tray ensures greater stability in an installation thanks to the the new support points and levelling guides.



Connection of elbow and straight clips, as well as chargers for mobile phones, PDAs, etc.

Maximum connection space



Blends in fully with the surroundings.

Perfect finishes.



Maximum safety

Protected opening system. The box can only be opened by pulling both opening clips at the same time.



The CIMA range evolves towards the future. It can include two **quick-connection** connectors for raised floor installations. Refs. SF410 and SF610

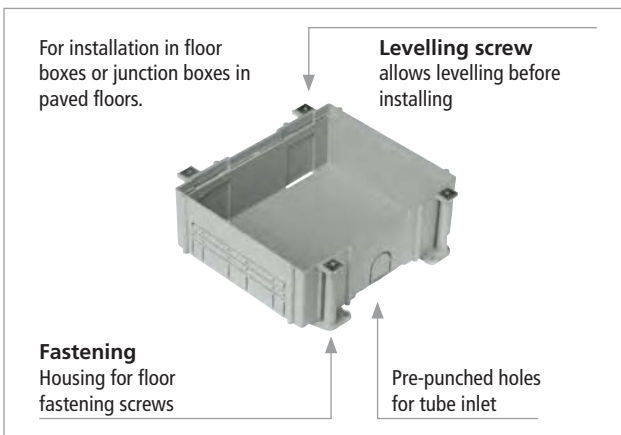
Quick-connection system on page 138



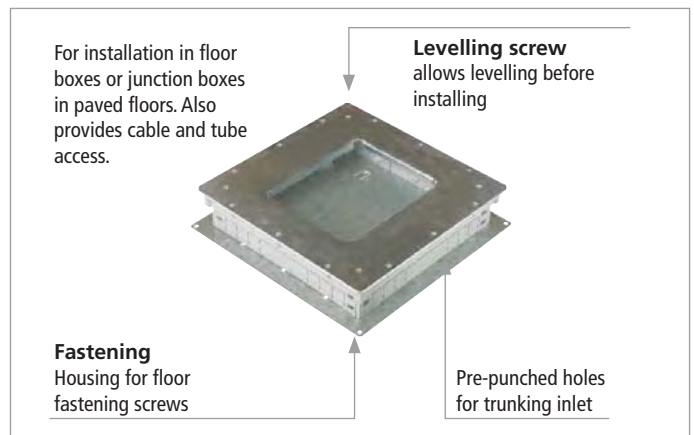
Fastening clips

No junction box is required for installing floor boxes in raised floors. The floor box attaches to the flagstone by means of metal, self-positioning **fastening clips**.

ADJUSTABLE PLASTIC GROUND TRAY



ADJUSTABLE METAL GROUND TRAY



With all necessary materials

Complete CIMA floor boxes are supplied with metal divider plate, mechanism-holder frame, connection cable with earth connection and all necessary hardware for installation.



Mechanisms, electrical sockets and plates from page 36



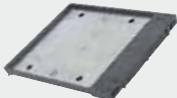
COMPLETE FLOOR BOXES - INCLUDE MECHANISM-HOLDER FRAME

Installation in raised flooring - depth adjustable from 90 mm to 120 mm



Complete floor box	Flush-mount trim cover
	
SF110 /1 /14 1 CIMA dual module SF210 /1 /14 2 CIMA dual modules SF310 /1 /14 3 CIMA dual modules SF410 /1 /14 4 CIMA dual modules SF610 /1 /14 6 CIMA dual modules	0 Optional S105 /1 /14 1 CIMA dual module S205 /1 /14 2 CIMA dual modules S305 /1 /14 3 CIMA dual modules S405 /1 /14 4 CIMA dual modules S605 /1 /14 6 CIMA dual modules

Spare parts

Hinged cover

RSF001 /1 /14 1 module RSF002 /1 /14 2 modules RSF003 /1 /14 3 modules RSF004 /1 /14 4 modules RSF006 /1 /14 6 modules

KITS



CIMA 3-module floor box kit, without cables
XSS0322 /14
 For paved floor requires G33 or G300. Trim cover not included.



CIMA 3-module floor Box Kit with cables
KITS370 /14
 For paved floor requires G33 or G300. Trim cover not included.

Built-in mechanism-holder frame

Mechanisms, electrical sockets and plates from page 36



CIMA floor boxes include the mechanism-holder frame incorporated in /9.

Frame also available in /14

SM102 /14	1 CIMA module.
SM202 /14	2 CIMA modules
SM302 /14	3 CIMA modules
SM402 /14	4 CIMA modules

Configuration example



	Quantity	Ref./Finish	Description
Covering	1	SF410/14	4-module complete CIMA floor box, graphite
	1	SM402/14	CIMA 4 module mechanism-holder frame, graphite
Electrical sockets and plates	1	S195AS/14	CIMA plate with 16A bipolar circuit-breaker, graphite
	1	S145	DIN guide adapter
	1	S1/6/14	Two-coloured CIMA double Schuko with pilot light, red/graphite
	1	S1/14	CIMA double Schuko with pilot light, graphite
	1	S80B96U/14	CIMA angled voice and data plate with 2 RJ45 Cat. 6 UTP connectors, graphite

Grey
Ral 7011

Pure white
Ral 9010

Graphite grey
Ral 7021

/1

/9

/14

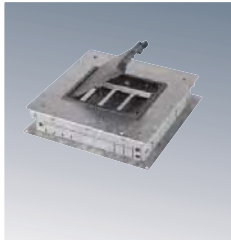
COMPLETE FLOOR BOXES - INCLUDE MECHANISM-HOLDER FRAME

Paved floor installation - depth adjustable from 70 mm to 100 mm
With plastic tray (Final connection)



Plastic tray		Complete floor box		Flush-mount trim cover		0 Optional
G11	1 CIMA dual module	SF170	/1 /14 1 CIMA dual module	S105	/1 /14 1 CIMA dual module	
G22	2 CIMA dual modules	SF270	/1 /14 2 Cima dual modules	S205	/1 /14 2 Cima dual modules	
G33	3 Cima dual modules	SF370	/1 /14 3 Cima dual modules	S305	/1 /14 3 Cima dual modules	
G44	4 Cima dual modules	SF470	/1 /14 4 Cima dual modules	S405	/1 /14 4 Cima dual modules	
G66	6 Cima dual modules	SF670	/1 /14 6 Cima dual modules	S605	/1 /14 6 Cima dual modules	

With metallic tray (For junctions)



Metal tray		Complete floor box		Flush-mount trim cover		0 Optional
G300	3 Cima dual modules	SF370	/1 /14 3 Cima dual modules	S305	/1 /14 3 Cima dual modules	
G400*	4 Cima dual modules	SF470	/1 /14 4 Cima dual modules	S405	/1 /14 4 Cima dual modules	
G600*	6 Cima dual modules	SF670	/1 /14 6 Cima dual modules	S605	/1 /14 6 Cima dual modules	

* Conversion plate on page 463

Spare parts

Hinged cover		RSF002		RSF003		RSF004		RSF006	
	RSF001 /1 /14 1 module	RSF002 /1 /14 2 modules	RSF003 /1 /14 3 modules	RSF004 /1 /14 4 modules	RSF006 /1 /14 6 modules				

A plastic or metal tray must be used for ground installation

Use of the plastic tray:

All the space in the tray is filled with the floor box. The cables enter through a corrugated pipe.

Use of the metal tray:

A space must be left between the floor box and the tray to allow the entry of cables or pipes. The cable inlet is through floor trunking.



1 Cut the trunking inlets



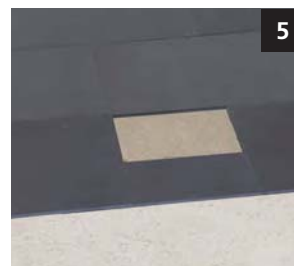
2 Insert the trunking and screw to the floor



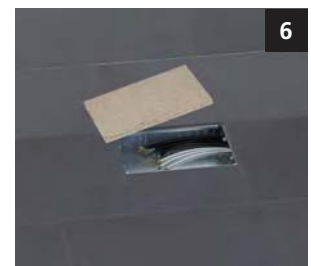
3 Level with the screws



4 Cement



5 Fit the trim



6 Remove the protective cover