



Connection Solutions
4Workplaces

simon
connect

**general
catalogue**
2011 - 2012



K45 OFIBLOCK LINE

Functional design



- With the new K45 OFIBLOCK LINE, connections are perfectly integrated within the furnishings and are accessible for use.
- Easy integration**

Rear cable inputs to facilitate installation in any furnishing space from 10 mm thick.

Valid for all table thicknesses



- Easy and safe installation**

OFIBLOCK fits into the frame at the rear and is safely secured by 4 fastening clips.



- Option of mechanisms in different finishes**

/8 /9 /14



- Integral design**

The frame incorporates straight lines and minimalist aesthetics that blend in with all furnishing styles.



| | |
|------------------------------|------------------------|
| Polished chrome-plated steel | Graphite grey Ral 7021 |
| /8 | /14 |

K45 OFIBLOCK LINE



| | |
|------------------|-------------------------|
| KSF134 /8 | 4 usable K45 mechanisms |
| KSF136 /8 | 6 usable K45 mechanisms |



i Frame finishes



Polished chrome-plated steel
(**KSF13X** /8)



Shiny chrome-plated steel
On request



Matt steel
On request



Colour painted option ■ ■ ■ ...
On request

K45 OFIBLOCK LINE FASTENING SUPPORT

0
Optional



KSF7 Set of 2 clips to secure the Ofiblock Line K45 with ease.
(For tables of 10 to 50 mm thick)

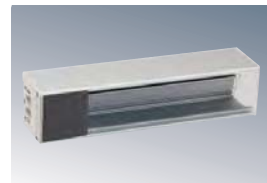


K45 OFIBLOCK REAR INPUTS (FOR FURNISHINGS FROM 10 mm THICK)



| | |
|-------------------|---|
| KFC134 /14 | 4 K45 usable mechanisms and 4 cable outlets |
| KFC136 /14 | 6 K45 usable mechanisms and 4 cable outlets |

Supplied with the section, 2 side blind covers, front blind plate, 4 clamps and 3 blocks.



K45 OFIBLOCK COMPACT SIDE INPUTS (FOR FURNISHINGS FROM 10 mm TO 24 mm THICK)

| | |
|-------------------|-------------------------|
| KFC104 /14 | 4 usable K45 mechanisms |
| KFC106 /14 | 6 usable K45 mechanisms |

It is supplied with the sections, side blind cover, side cable input cover and front blind plate

KITS



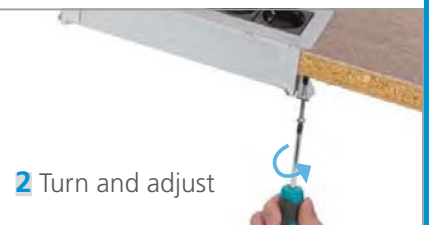
K45 Kit OFIBLOCK 4 mechanisms rear inputs

KFC1446U /14

With 3 K45 electrical sockets, 2 RJ45 connectors Cat. 6UTP, 2 electrical patch cords 3x2.5 mm², 2 m, Schuko socket and 2 UPD, 2 m.



i Assembly sequence KSF7 fastening support



i Configuration example



| | Quantity | Ref./Finish | Description |
|-------------------------------|----------|------------------|--|
| Covering | 1 | KFC134/8 | K45 Ofiblock Line, polished chrome-plated |
| | 1 | KFC134/14 | K45 Ofiblock with 4 usable K45 mechanisms, rear inputs, graphite |
| Electrical sockets and plates | 3 | K11/14 | K45 electrical socket, Schuko, quick terminal connection, graphite |
| | 2 | AC11 | Connection block for multi-sockets |
| | 1 | KB96U/14 | K45 V&D plate with 2 connectors Cat. 6 UTP, graphite |

Technical details
See page 165