

Linea SPACE

NEW SOLUTION FOR CONSUMER UNITS





Soft and Modern
Lines

Flat surface and stain
proof finishing

Integrated
ergonomic
opening handle





New universal box for
SPACE Line and E215
Series units.

The installation has never been so Easy

The advantage of
using a common
box

The SPACE Line units can be installed in the new universal boxes available both in the flush mounted and in the plasterboard versions. The new boxes allow also the installation of the E215 Series units which simplifies a lot the installation and leaves open the possibility to choose the finishing of the unit at a later time without having to provide additional works of adaptation.



Linea SPACE white

A more technical box

The new boxes have a rib that considerably increases their robustness. Additionally the Knockouts which they are equipped with allow you to keep in order the pipes.



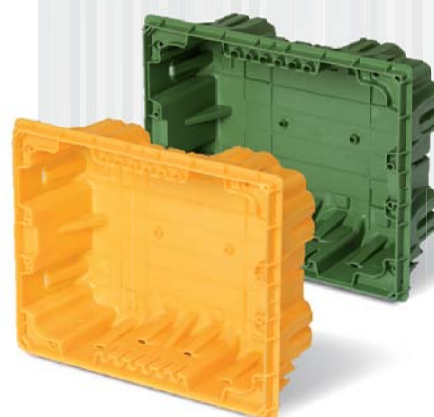
A bigger box

The internal dimensions of the box are bigger in order to allow a much easier wiring and therefore simplify the contractor's work.



Concrete or plasterboard walls

The universal boxes for the Linea Space units, available both for concrete and for plasterboard, allow the installation also of the E215 Series units.



Serie E215



Linea SPACE Opaline



Linea SPACE Smoke

Functionality and ease of use



Paintable surface

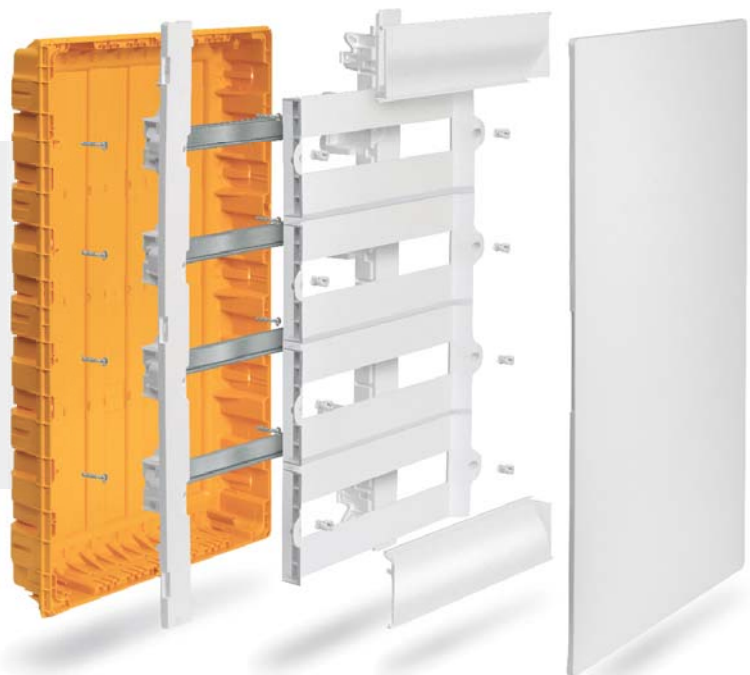
The units with the classic white finishing have a paintable surface to meet the aesthetic needs of the environments in which they are installed.

180° Door Opening

The unit door can be opened to 180° in order to facilitate the access to the equipment installed in it.
PATENT BTICINO

Removable frame

The units of 36 to 72 modules are designed with a removable frame and finishing panels with screws at ¼ turn in order to speed up the installation and to facilitate the various maintenance operations or the switchboard updating.



FLUSH MOUNTED UNITS

LINEASPACE



IEC 60670-24 Compliant
 IP40 and IK08 (6 joules) protection
 Thermoplastic resin material
 Insulation class II
 RAL 9003 White, Smoke and Opaline finishings solutions
 Temperature range: -25 to 85 °C
 Resistance to abnormal heat and to fire (EN 60695-2-11): 650 °C (concrete version) 850 ° (plasterboard version)
 Rail type: DIN35: Galvanized steel
 Panels (with screw at 1/4 turn) and removable frame for more than 18 modules per row
 Knockouts for 16 to 32mm (diameter) pipes
 Reversible door opening to 180 °
 Common boxes for Linea SPACE and E215 Series units
 Flush mounted box to be ordered separately (plasterboard version with all specific accessories supplied)

Item	WHITE DOOR UNITS				
Unit	Concrete box	Plasterboard box	N° of modules	WxHxD (mm)	Pw(W)
F315PB8	F315S8	F315SC8	8	286x208x100	22
F315PB12	F315S12	F315SC12	12	359x246x100	26
F315PB18	F315S18	F315SC18	18	493x288x105	41
F315PB24	F315S24	F315SC24	2x12	359x396x105	40
F315PB36D3	F315S36D3	F315SC36D3	3x12	359x546x105	57
F315PB36D2	F315S36D2	F315SC36D2	2x18	493x496x105	62
F315PB54	F315S54	F315SC54	3x18	493x650x111	70
F315PB72	F315S72	F315SC72	4x18	493x800x111	78

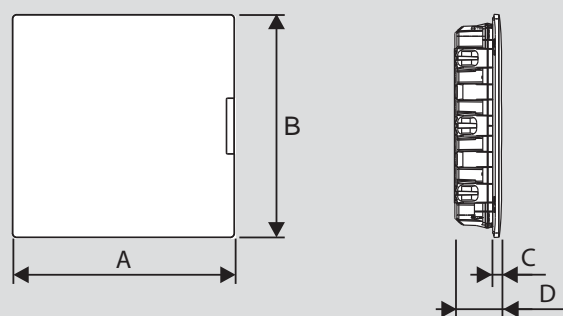
Item	SMOKE DOOR UNITS				
Unit	Concrete box	Plasterboard box	N° of modules	WxHxD (mm)	Pw(W)
F315P8	F315S8	F315SC8	8	286x208x100	22
F315P12	F315S12	F315SC12	12	359x246x100	26
F315P18	F315S18	F315SC18	18	493x288x105	41
F315P24	F315S24	F315SC24	2x12	359x396x105	40
F315P36D3	F315S36D3	F315SC36D3	3x12	359x546x105	57
F315P36D2	F315S36D2	F315SC36D2	2x18	493x496x105	62
F315P54	F315S54	F315SC54	3x18	493x650x111	70
F315P72	F315S72	F315SC72	4x18	493x800x111	78

Item	OPALINE DOOR UNITS				
Unit	Concrete box	Plasterboard box	N° of modules	WxHxD (mm)	Pw(W)
F315PS8	F315S8	F315SC8	8	286x208x100	22
F315PS12	F315S12	F315SC12	12	359x246x100	26
F315PS18	F315S18	F315SC18	18	493x288x105	41
F315PS24	F315S24	F315SC24	2x12	359x396x105	40
F315PS36D3	F315S36D3	F315SC36D3	3x12	359x546x105	57
F315PS36D2	F315S36D2	F315SC36D2	2x18	493x496x105	62
F315PS54	F315S54	F315SC54	3x18	493x650x111	70
F315PS72	F315S72	F315SC72	4x18	493x800x111	78

Item	TERMINAL STRIPS		
	N° of conductors	section (mm ²)	colour
FMM8N	8	16	blue/neutral
FMM8T	8	16	green/ground
FMM22N	22	21x16+1x25	blue/neutral
FMM22T	22	21x16+1x25	green/ground

ACCESSORIES	
F107NC1	Key lock compatible with E215 Series units and IDROBOARD
F315KAS	Coupling kits for flush mounted boxes (not to be used with boxes F215 /6S)
F215FP	9 mm blank module (1/2 module) - RAL 9003 white finishing - 5 modules
F315HZ8	Horizontal Isolation plate for units of 18 modules per row
F315P18F	Perforated plate for units of 18 modules per row
F315P18P	Full plate for units of 18 modules per row

DIMENSION



ITEM	DIMENSION (mm)			
	A	B	C	D
F315...8	286	208	20	100
F315...12	359	246	20	100
F315...18	493	288	20	105
F315...24	359	396	20	105
F315...36D3	359	546	20	105
F315...36D2	493	496	20	105
F315...54	493	650	20	111
F315...72	493	800	20	111

bticino

BTicino SpA
Viale Borri, 231
21100 Varese
www.bticino.it

AD-ITLS15C/GB - July 2015

In accordance with its policy of continuous improvement, the Company reserves the right to change specifications and designs without notice. All illustrations, descriptions, dimensions and weights in this catalogue are for guidance and cannot be held binding on the Company.