

# Cable glands





<b>3.1 Ex-e/i Cable Glands .....</b>	<b>2.3.4</b>
Ex-Cable plastic glands .....	2.3.5
Ex-plastic screw plug / blanking plugs.....	2.3.7
Ex-plastic reducer rings.....	2.3.8
Ex-trumpet-shaped cable glands.....	2.3.9
Ex-drainage plug .....	2.3.10
Accessories for Ex-cable glands .....	2.3.11
<b>3.2 Ex-d/e Cable Glands Metal Design .....</b>	<b>2.3.12</b>
Ex-metal cable glands .....	2.3.13
Ex-cable glands ADE 1F2.....	2.3.14
Ex-cable glands ADE 6F.....	2.3.18
Accessories for Ex-cable glands ADE.....	2.3.20
Ex-d/e metal reducing rings/screw plugs .....	2.3.24
Ex-d/e metal adapter .....	2.3.27

# 3.1

## Ex-e/i Cable Glands

Plastic version for Zone 1, 2, 21 and 22 1 - according to EN 60079-0: 2012

3

### Conform with latest standards

Cable glands with metric screw-in threads are now standard and had replace the PG cable glands that were formally used.

The CEAG plastic cable glands are in accordance with EN 60079-0: 2012 and can be used in Ex-e/Ex-i housings in hazardous areas of the Zones 1, 2 and 22.

Optional and not used cable glands must be closed with certified blanking plugs. The blanking plugs allow for a flexible and cost effective utilization of the explosion-protected appliances. Changes and upgrades can be then easily carried out at a later date.

The outstanding feature of the CEAG cable glands is the large cable connection area.

### Degree of protection

A high IP safety standard is achieved with the integrated sealing lip on the screw-in cable entries. Depending on the surface roughness the use of an additional sealing ring may not be necessary. The good mechanical and handling features are achieved by using a modified Polyamide material and a optimized tooling area.



### Features

- Large cable connection area
- Same wrench tool for both hexagons
- Conform accd. to latest EN 60079-0:2012
- Safety standard IP66
- Optimized tooling area
- Trapezoid thread, for a secure hold



Screw plug



Blanking plug



Cable gland -55°C Ex-e



Cable gland -20°C Ex-i

Technical data

Ex e cable glands

Marking accd. to 2014/34/EU	⊕ II 2 G Ex eb IIC Gb / ⊕ II 2 D Ex tb IIIC Db
EC-Type Examination Certificate	PTB 14 ATEX 1015 X
IECEX Certificate of Conformity	IECEX PTB 14.0027X
Marking accd. to IECEx	Ex eb IIC Gb / Ex eb IIC Gb
Permissible ambient temperature	-20 °C up to +70 °C (see ordering details)
M20	-40 °C up to +70 °C (see ordering details)
M25 - M63	-55 °C up to +70 °C (see ordering details)
Degree of protection accd. to EN 60529	IP66 / IP68: 1 m water depth for 0.5 h
Enclosure material	Polyamide

Ex-e screw plug

Marking accd. to 2014/34/EU	⊕ II 2 G Ex e II / ⊕ II 2 D Ex tb IIIC Db IP66 (M63 only for II 2 G)
EC-Type Examination Certificate	PTB 98 ATEX 3130
IECEX Certificate of Conformity	IECEX PTB 03.0000
Marking accd. to IECEx	Ex e IIC Gb / Ex tb IIIC Db IP66/IP65 (M63 only for II 2 G)
Permissible ambient temperature	-55 °C to +55 °C
Degree of protection accd. to EN 60529	IP66 / IP68: 1 m water depth for 0.5 h
Enclosure material	Polyamide

Blanking plug I Reducing rings

Marking accd. to 2014/34/EU	⊕ II 2 G Ex eb IIC Gb / ⊕ II 2 D Ex tb IIIC Db IP66
EC-Type Examination Certificate	PTB 14 ATEX 1015X
IECEX Certificate of Conformity	IECEX PTB 14.0027X
Marking accd. to IECEx	Ex eb IIC Gb / Ex tb IIIC Db
Permissible ambient temperature	-55 °C bis +70 °C
Degree of protection accd. to EN 60529	IP66
Enclosure material	Polyamide

## Ex-e/i cable plastic glands



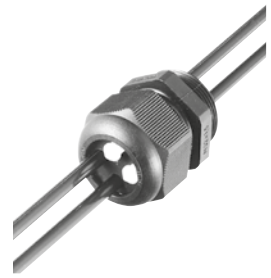
Cable gland -55 °C Ex-e



Cable gland -20 °C Ex-i



Cable gland -20 °C Ex-e



Multiple cable gland

3

### Ordering details

Thread	Cable Ø mm			A/F mm	L mm	E mm	Weight kg	OU	Order No. (-20 °C up to +70 °C)	Order No. (-40/-55 °C up to +70 °C)
	seal. 1+2+3	seal. 1+2	seal. 1							
<b>Ex-e cable gland with short thread accd. to EN 50262-black</b>										
M12 x 1.5	---	5 - 7	15	19.3	8	0.003	20	<b>GHG 960 1955 R0001</b>	---	
M16 x 1.5	5.5 - 7	7 - 10	20	23.0	8	0.006	20	<b>GHG 960 1955 R0002</b>	---	
M20 x 1.5	5.5 - 7	7 - 9	9.5 - 13	24	25.0	0.09	20	<b>GHG 960 1955 R0003</b>	---	
M20 x 1.5	5.5 - 7	7 - 9	9.5 - 11	24	25.0	0.09	20	---	<b>GHG 960 1955 R0010</b>	
M25 x 1.5	8 - 10	10 - 13	13.5 - 17.5	29	29.5	0.017	20	<b>GHG 960 1955 R0004</b>	---	
M25 x 1.5	8 - 10	10 - 13	13.5 - 15	29	29.5	0.018	20	---	<b>GHG 960 1955 R0009</b>	
M32 x 1.5	14 - 17	17.5 - 21	36	35.5	10	0.026	20	<b>GHG 960 1955 R0005</b>	<b>GHG 960 1955 R0011</b>	
<b>Ex-e cable gland with long thread-black</b>										
M12 x 1.5	---	5 - 7	15	19.3	12	0.003	20	<b>GHG 960 1955 R0021</b>	---	
M16 x 1.5	5.5 - 7	7 - 10	20	23.0	12	0.007	20	<b>GHG 960 1955 R0022</b>	---	
M20 x 1.5	5.5 - 7	7 - 9	9.5 - 13	24	25.0	0.010	20	<b>GHG 960 1955 R0023</b>	---	
M20 x 1.5	5.5 - 7	7 - 9	9.5 - 11	24	25.0	0.010	20	---	<b>GHG 960 1955 R0029</b>	
M25 x 1.5	8 - 10	10 - 13	13.5 - 17.5	29	29.5	0.018	20	<b>GHG 960 1955 R0024</b>	---	
M25 x 1.5	8 - 10	10 - 13	13.5 - 15	29	29.5	0.018	20	---	<b>GHG 960 1955 R0030</b>	
M32 x 1.5	14 - 17	17.5 - 21	36	35.5	15	0.029	20	<b>GHG 960 1955 R0025</b>	<b>GHG 960 1955 R0031</b>	
M40 x 1.5	19 - 22	22 - 28	46	39.5	15	0.046	10	---	<b>GHG 960 1955 R0026</b>	
M50 x 1.5	24 - 28	28 - 35	55	44.0	16	0.073	10	---	<b>GHG 960 1955 R0027</b>	
M63 x 1.5	29 - 35	36 - 48)	68	47.0	16	0.116	5	---	<b>GHG 960 1955 R0028</b>	
<b>Ex-i cable gland with short thread-blue</b>										
M12 x 1.5	---	5 - 7	15	19.3	8	0.003	20	<b>GHG 960 1955 R0101</b>	---	
M16 x 1.5	5.5 - 7	7 - 10	20	23.0	8	0.006	20	<b>GHG 960 1955 R0102</b>	---	
M20 x 1.5	5.5 - 7	7 - 9	9.5 - 13	24	25.0	0.009	20	<b>GHG 960 1955 R0103</b>	---	
M20 x 1.5	5.5 - 7	7 - 9	9.5 - 11	24	25.0	0.009	20	---	<b>GHG 960 1955 R0109</b>	
M25 x 1.5	8 - 10	10 - 13	13.5 - 17.5	29	29.5	0.017	20	<b>GHG 960 1955 R0104</b>	---	
M25 x 1.5	8 - 10	10 - 13	13.5 - 15	29	29.5	0.017	20	---	<b>GHG 960 1955 R0110</b>	
M32 x 1.5	14 - 17	17.5 - 21	36	35.5	10	0.026	20	<b>GHG 960 1955 R0105</b>	<b>GHG 960 1955 R0111</b>	
<b>Ex-i cable gland with long thread-blue</b>										
M12 x 1.5	---	5 - 7	15	19.3	12	0.003	20	<b>GHG 960 1955 R0121</b>	---	
M16 x 1.5	5.5 - 7	7 - 10	20	23.0	12	0.007	20	<b>GHG 960 1955 R0122</b>	---	
M20 x 1.5	5.5 - 7	7 - 9	9.5 - 13	24	25.0	0.010	20	<b>GHG 960 1955 R0123</b>	---	
M20 x 1.5	5.5 - 7	7 - 9	9.5 - 11	24	25.0	0.010	20	---	<b>GHG 960 1955 R0129</b>	
M25 x 1.5	8 - 10	10 - 13	13.5 - 17.5	29	29.5	0.018	20	<b>GHG 960 1955 R0124</b>	---	
M25 x 1.5	8 - 10	10 - 13	13.5 - 15	29	29.5	0.018	20	---	<b>GHG 960 1955 R0130</b>	
M32 x 1.5	14 - 17	17.5 - 21	36	35.5	15	0.029	20	<b>GHG 960 1955 R0125</b>	<b>GHG 960 1955 R0131</b>	
M40 x 1.5	19 - 22	22 - 28	46	39.5	15	0.046	10	---	<b>GHG 960 1955 R0126</b>	
M50 x 1.5	24 - 28	28 - 35	55	44.0	16	0.073	10	---	<b>GHG 960 1955 R0127</b>	
M63 x 1.5	29 - 35	36 - 48 <sup>1)</sup>	68	47.0	16	0.116	5	---	<b>GHG 960 1955 R0128</b>	

<sup>1)</sup> M63 with additional sealing

Cable glands with PG-thread are available on request. The order No. will show 1 pcs. Please note that only order units (OU) can be ordered.



Enlargement cable gland



Reducing rings



Screw plug



Blanking plug

Ordering details

Thread	Cable Ø mm seal. 1+2	seal. 2	A/F mm	L mm	E mm	Weight kg	OU	Order No. (-20 °C up to +70 °C)	Order No. (-40/-55 °C up to +70 °C)
--------	-------------------------	---------	-----------	---------	---------	--------------	----	------------------------------------	--

Multiple cable glands -black

M25 x 1.5	2 x 4.5 - 7		29	29.5	8	0.019	20	GHG 960 1955 R0054	---
M32 x 1.5	4 x 4.5 - 7		36	35.5	10	0.030	20	GHG 960 1955 R0055	---

Slotted cable glands for special cables:

(Breakout-internal cable type orange/ Ultra-Fox Plus type 903 AG 621 02 709/ Ehret / ICS 24 type 84 305 ... 2)

M20 x 1.5 black <sup>2)</sup>			24	25.0	8	0.010	20	GHG 960 1955 R0403	
M20 x 1.5 blue <sup>2)</sup>			24	25.0	8	0.010	20	GHG 960 1955 R0413	

Enlargement cable glands (reduced thread diameter)

M16/M20	7 - 9	9.5 - 13	24	25.0	12	0.010	20	GHG 960 1956 R0002	
M20/M25	10 - 13	13.5 - 17.5	29	29.5	13	0.018	20	GHG 960 1956 R0003	
M25/M32	14 - 17	17.5 - 21	36	35.5	13	0.029	20	GHG 960 1956 R0004	
M32/M40	19 - 22	22.0 - 28	46	39.5	15	0.046	10	GHG 960 1956 R0005	
M40/M50	24 - 28	28.0 - 35	55	44.0	15	0.073	10	GHG 960 1956 R0006	
M50/M63	29 - 35	36.0 - 48 <sup>1)</sup>	68	47.0	16	0.116	5	GHG 960 1956 R0007	

	E mm	Ø D mm	Weight kg	OU	Order No. (-55 °C up to +70 °C)
--	---------	-----------	--------------	----	------------------------------------

Blanking plug for cable glands

M12	30.3	6.0	0.001	20	GHG 960 1944 R0101
M16	33.0	7.0	0.001	20	GHG 960 1944 R0102
M20	34.5	8.5	0.002	20	GHG 960 1944 R0103
M25	36.0	11.0	0.003	20	GHG 960 1944 R0104
M32	39.5	14.0	0.005	20	GHG 960 1944 R0105
M40	42.0	20.0	0.018	10	GHG 960 1944 R0106
M50	44.0	26.0	0.033	10	GHG 960 1944 R0107
M63	45.0	34.0	0.108	5	GHG 960 1944 R0108

Thread	L mm	E mm	Ø D mm	Weight kg	OU	Order No. (-55 °C up to +70 °C)
--------	---------	---------	-----------	--------------	----	------------------------------------

Screw plug

M16 x 1.5	4.0	12	21.5	0.002	20	GHG 960 1952 R0111
M20 x 1.5	4.0	13	25.5	0.004	20	GHG 960 1952 R0112
M25 x 1.5	4.0	13	30.5	0.007	20	GHG 960 1952 R0113
M32 x 1.5	5.5	15	37.5	0.013	10	GHG 960 1952 R0114
M40 x 1.5	5.5	15	45.5	0.020	10	GHG 960 1952 R0115
M50 x 1.5	5.5	16	55.5	0.030	5	GHG 960 1952 R0116
M63 x 1.5	6.5	16	85.0	0.040	5	GHG 960 1952 R0117

<sup>1)</sup> M63 with additional sealing

<sup>2)</sup> Cable dimensions and ambient temperatures see operating instruction

Cable glands with PG-thread are available on request.

The order No. will show 1 pcs. Please note that only order units (OU) can be ordered.

## Ex-plastic reducer rings



Cable gland



Screw plug



Blanking plug



Reducing ring

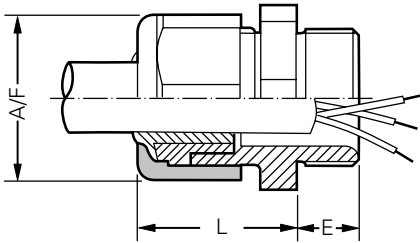
3

Thread 1	Thread 2	A/F mm	L mm	E mm	L1 mm	Weight kg	OU	Order No. (-55 °C up to +70 °C)
<b>Reducing rings</b>								
M20 x 1.5	M16 x 1.5	24	6	8	8	0.014	20	<b>GHG 960 1946 R0071</b>
M25 x 1.5	M20 x 1.5	29	6	8	8	0.016	20	<b>GHG 960 1946 R0072</b>
M32 x 1.5	M20 x 1.5	36	6	10	6	0.017	20	<b>GHG 960 1946 R0056</b>
M32 x 1.5	M25 x 1.5	36	6	10	10	0.016	20	<b>GHG 960 1946 R0074</b>
M40 x 1.5	M25 x 1.5	46	6	10	8	0.023	10	<b>GHG 960 1946 R0059</b>
M40 x 1.5	M32 x 1.5	46	6	10	10	0.021	10	<b>GHG 960 1946 R0077</b>
M50 x 1.5	M32 x 1.5	55	6	12	10	0.036	10	<b>GHG 960 1946 R0062</b>
M50 x 1.5	M40 x 1.5	68	6	12	10	0.032	10	<b>GHG 960 1946 R0080</b>
M63 x 1.5	M40 x 1.5	68	6	12	10	0.040	5	<b>GHG 960 1946 R0065</b>
M63 x 1.5	M50 x 1.5	68	6	12	12	0.030	5	<b>GHG 960 1946 R0083</b>

Cable glands with PG-thread are available on request.

The order No. will show 1 pcs. Please note that only order units (OU) can be ordered.

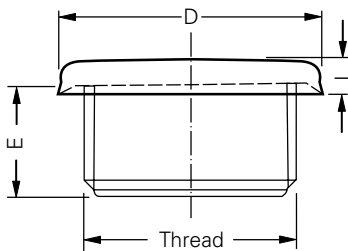
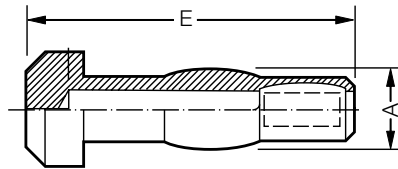
### Dimension drawing



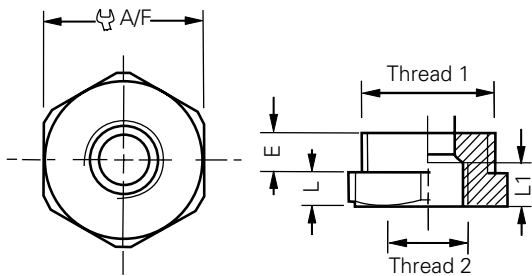
Cable gland



Blanking plug



Screw plug



Reducing rings

Dimensions in mm





Trumpet shaped cable gland

Technical data

Ex-e Trumpet shaped cable gland

Marking accd. to 2014/34/EU	⊕ II 2 G Ex e II / ⊕ II 2 D Ex tD A21 IP66
EC-Type Examination Certificate	PTB 00 ATEX 3121
IEC-Ex Certificate of Conformity	IECEx BKI 08.0007
Marking accd. to IECEx	Ex e II / Ex tD A21 IP66 T85°C
Permissible ambient temperature	-40 °C up to +85 °C
Degree of protection accd. to EN 60529	IP66
Enclosure material	Polyamide

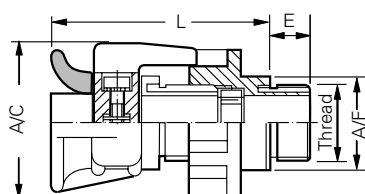
Ordering details

Thread	A/C mm	L mm	E mm	∅ Cable mm	A/F mm	Weight approx. kg	OU	Order No.
<b>Ordering details Trumpet shaped cable gland</b>								
M20 x 1.5	47	64	15	8 – 13	27	0.057	10	<b>GHG 960 1949 R0111</b>
M25 x 1.5	51	65	15	11 – 16	32	0.070	10	<b>GHG 960 1949 R0112</b>
M32 x 1.5	68	80	15	15 – 20	41	0.140	10	<b>GHG 960 1949 R0113</b>
M40 x 1.5	81	86	15	19 – 27	50	0.194	10	<b>GHG 960 1949 R0114</b>
M50 x 1.5	96	95	16	28 – 34	60	0.333	1	<b>GHG 960 1949 R0115</b>
M63 x 1.5	107	105	16	38 – 46	75	0.742	1	<b>GHG 960 1949 R0116</b>

The order No. will show 1 pcs.

Please note that only order units (OU) can be ordered.

Dimension drawing



Trumpet shaped cable gland

## Ex-drainage plug



3

### Breathing & drainage plug

#### Technical data

Ex-e Breathing and drainage plug	
Marking accd. to 2014/34/EU	II 2 G Ex e II
EC-Type Examination Certificate	SIRA 99 ATEX 3050 U
IECEX Certificate of Conformity	IECEX SIR 08.0024X
Marking accd. to IECEx	Ex e IIC Gb / Ex eb IIC Gb / Ex tb IIIC Db IP66
Permissible ambient temperature	-50 °C to +85 °C
Degree of protection accd. to EN 60529	IP66
Enclosure material	Polyamide

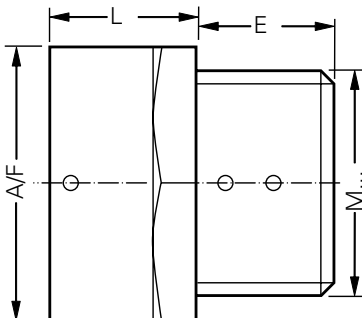
#### Ordering details

Type	Thread	A/F mm	L mm	E mm	Weight kg	OU	Order No.
Breathing and Drainage plug	M20 x 1.5	40	17	15	0.03	20	<b>GHG 960 1954 R0014</b>
	M25 x 1.5	40	17	15	0.03	20	<b>GHG 960 1954 R0002</b>

The order No. will show 1 pcs.

Please note that only order units (OU) can be ordered.

#### Dimension drawing

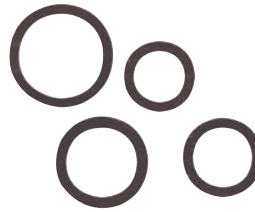


Breathing and Drainage plug

Dimensions in mm



Spanner



Gasket



Lock nut

Accessories

Type	A/F mm	Thickness mm	Weight g	OU	Order No.
------	--------	--------------	----------	----	-----------

Ordering details lock nut for cable glands

M12 x 1.5	17	5	9	10	GHG 960 1941 R0031
M16 x 1.5	22	5	14	10	GHG 960 1941 R0032
M20 x 1.5	26	6	22	10	GHG 960 1941 R0033
M25 x 1.5	32	6	32	10	GHG 960 1941 R0034
M32 x 1.5	41	7	59	10	GHG 960 1941 R0035
M40 x 1.5	50	7	79	5	GHG 960 1941 R0036
M50 x 1.5	60	8	98	5	GHG 960 1941 R0037
M63 x 1.5	75	8	150	5	GHG 960 1941 R0038

Type	ØD mm	Thickness mm	Weight g	OU	Order No.
------	-------	--------------	----------	----	-----------

Ordering details gasket for glands

M12 x 1.5	18	1.2	0.44	10	CAP 221 249
M16 x 1.5	22	1.2	0.50	10	CAP 221 649
M20 x 1.5	24	1.2	0.48	10	CAP 222 049
M25 x 1.5	30	1.5	0.69	10	CAP 222 549
M32 x 1.5	42	1.5	1.39	10	CAP 223 249
M40 x 1.5	52	1.5	2.00	10	CAP 224 049
M50 x 1.5	63	1.5	2.00	10	CAP 225 049
M63 x 1.5	77	2.0	4.80	10	CAP 226 349

Type	Size	SW mm	Weight kg	Order No.
------	------	-------	-----------	-----------

Ordering details special spanner for fastening of cable glands

Set 1	M12	15	0.825	GHG 960 1951 R0001
	M16	20		
	M20	24		
	M25	29		
	M32	36		
	M40	46		
Set 2	M50	55	0.905	GHG 960 1951 R0002
	M63	68		

The order No. will show 1 pcs.

Please note that only order units (OU) can be ordered.

# 3.2

## Ex-d/e Cable Glands Metal Design

For Zone 1, 2, 21 and 22 according EN 60079-0:2012 / IEC 60079-0: 2011

3

### Designed according to the latest standards

For introducing cables or leads into metal housings, explosion-protected housing or, if reinforced cables have to be introduced, metal cable glands are used. Metal glands are designed for use in areas of Zone 1, 2, 21 and Zone 22 at no risk of explosion and for cables with and without reinforcement.

Depending on the area of use, these cable entries are certified with the type of protection Ex-d or Ex-e pursuant to the latest standard EN 60079-1 or EN 60079-7.

### For all applications

For special applications, the cable glands are available in high-quality stainless steel 316L, nickel plated brass, marine bronze or anodised AV4PB.

In the case of systems or housings manufactured according to the NEC (National Electrical Code), the line or the connecting cable must be introduced via conduits, mounting fittings, etc. with NPT threads. Optional holes, or those that are not used, must be closed with a screw connection certified for this purpose.

Special versions are available for different applications.



### Features

- Certified accord. to the latest Standard EN 60079-0: 2009
- Mechanical, chemical and thermal resistance
- Ambient temperature -60 °C up to +140 °C
- Single range with global compliance: NEC, IEC standard and marine approval. All covered with one product.
- High-quality alloy



ADE 6FC



ADE 6F



ADE 4F/5F



ADE 1F2

Technical data

Ex e cable glands metal ADE ...

Marking accd. to 2014/34/EU	⊕ II 2 G Ex db eb IIC / ⊕ II 2 D Ex tb IIIC
EC-Type Examination Certificate	INERIS 12 ATEX 0032X
IECEx Certificate of Conformity	IECEx INE 12.0025X
Marking accd. to IECEx	Ex db eb IIC / Ex tb IIIC / Ex e II / Ex tD
Permissible ambient temperature	ADE 1/4/5...: -60 °C to +140 °C ADE 1/6 FC...: -60 °C to +80 °C
Degree of protection accd. to EN 60529	IP66 / IP68 - 10 bar
Thread	ISO-thread accd. ISO 965/1, ISO 965R and EN 60423
Enclosure material	Nickel-plated brass (CuZn gal. Ni), stainless steel, bronze, natural brass option

## Ex-cable glands ADE 1F2



ADE 1F2 ISO

3

### Ordering details

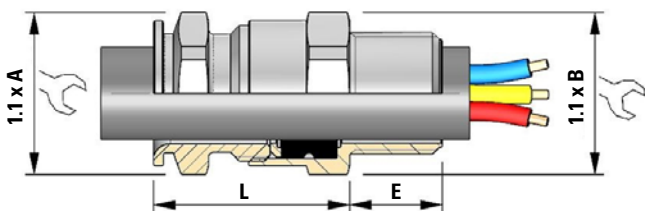
ISO	Type	Cable Ø outside mm	A mm	B mm	E mm	L mm	Order No. CuZn gal. Ni	Order No. stainless steel
<b>Cable gland type ADE 1F2 for unarmoured cable with ISO thread</b>								
M12 x 1.5	4	4.5 - 8	17	17	15	25	<b>CAP 806 404 V1</b>	<b>CAP 806 409 V1</b>
M16 x 1.5	4	4.5 - 8.5	19	17	15	25	<b>CAP 806 594 V1</b>	<b>CAP 806 599 V1</b>
M16 x 1.5	5	7 - 12	19	19	15	27.5	<b>CAP 806 504 V1</b>	<b>CAP 806 509 V1</b>
M20 x 1.5	3	2.75 - 5.5	24	15	15	24	<b>CAP 806 664 V1</b>	<b>CAP 806 669 V1</b>
M20 x 1.5	4	4.5 - 8.5	24	17	15	25	<b>CAP 806 674 V1</b>	<b>CAP 806 679 V1</b>
M20 x 1.5	5	7 - 12	24	19	15	27.5	<b>CAP 806 694 V1</b>	<b>CAP 806 699 V1</b>
M20 x 1.5	6	10 - 16	24	24	15	32	<b>CAP 806 604 V1</b>	<b>CAP 806 609 V1</b>
M25 x 1.5	5	7 - 12	30	19	15	27.5	<b>CAP 806 774 V1</b>	<b>CAP 806 779 V1</b>
M25 x 1.5	6	10 - 16	30	24	15	32	<b>CAP 806 794 V1</b>	<b>CAP 806 799 V1</b>
M25 x 1.5	7	13.5 - 20.5	30	30	15	36.5	<b>CAP 806 704 V1</b>	<b>CAP 806 709 V1</b>
M32 x 1.5	8	18 - 27.5	41	41	15	46	<b>CAP 806 804 V1</b>	<b>CAP 806 809 V1</b>
M40 x 1.5	9	23 - 34	48	48	15	50	<b>CAP 806 904 V1</b>	<b>CAP 806 909 V1</b>
M50 x 1.5	10	29 - 41	55	55	16	52	<b>CAP 807 004 V1</b>	<b>CAP 807 009 V1</b>
M50 x 1.5	11	35 - 45	64	64	16	56.5	<b>CAP 807 084 V1</b>	<b>CAP 807 089 V1</b>
M63 x 1.5	12	42 - 56	72	72	17	60	<b>CAP 807 204 V1</b>	<b>CAP 807 209 V1</b>
M75 x 1.5	13	50 - 65	85	85	18	67.5	<b>CAP 807 304 V1</b>	<b>CAP 807 309 V1</b>
M90 x 2.0	14	58 - 74	95	95	22	69	<b>CAP 807 594 V1</b>	<b>CAP 807 599 V1</b>
M90 x 2.0	15	66 - 83	110	110	22	80	<b>CAP 807 504 V1</b>	<b>CAP 807 509 V1</b>
M110 x 2.0	16	75 - 93	120	120	22	80	<b>CAP 807 604 V1</b>	<b>CAP 807 609 V1</b>
M110 x 2.0	17	85 - 104	135	135	22	90	<b>CAP 807 704 V1</b>	<b>CAP 807 709 V1</b>

Please use sealing washers (see page 2.3.28).

For cable gland kits with washer and lock nut please add "K1" at the end of the order No.

Example: **CAP 806 404 V1 K1** contains a **ADE 1F2 M12 x 1.5 type 4 + 1 x MsNi lock nut M12 + 1 x green fibre gasket for M12**

### Dimension drawing



Type ADE 1F2

Dimensions in mm



ADE 1F2 NPT

Ordering details

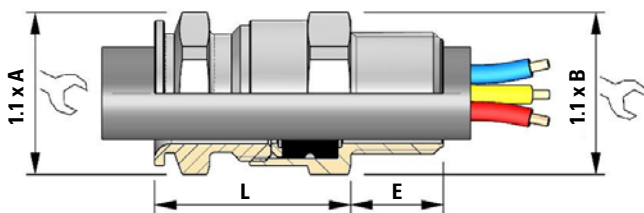
NPT	Type	Cable Ø outside mm	A mm	B mm	E mm	L mm	Order No. CuZn gal. Ni	Order No. stainless steel
<b>Cable gland type ADE 1F2 for unarmoured cable with NPT thread</b>								
1/2"	3	2.75 - 5.5	24	15	22.2	24	<b>CAP 808 664 V1</b>	<b>CAP 808 669 V1</b>
1/2"	4	4.5 - 8.5	24	17	22.2	26	<b>CAP 808 674 V1</b>	<b>CAP 808 679 V1</b>
1/2"	5	7 - 12	24	19	22.2	29.5	<b>CAP 808 694 V1</b>	<b>CAP 808 699 V1</b>
1/2"	6	10 - 15.5	24	24	22.2	32	<b>CAP 808 604 V1</b>	<b>CAP 808 609 V1</b>
3/4"	5	7 - 12	30	19	22.5	29.5	<b>CAP 808 774 V1</b>	<b>CAP 808 779 V1</b>
3/4"	6	10 - 16	30	24	22.5	32	<b>CAP 808 794 V1</b>	<b>CAP 808 799 V1</b>
3/4"	7	13.5 - 20.5	30	30	22.5	38.5	<b>CAP 808 704 V1</b>	<b>CAP 808 709 V1</b>
1"	8	18 - 26	41	41	27.3	46	<b>CAP 808 804 V1</b>	<b>CAP 808 809 V1</b>
1 1/4"	9	23 - 34	48	48	28	50	<b>CAP 808 904 V1</b>	<b>CAP 808 909 V1</b>
1 1/2"	10	29 - 41	55	55	28.5	52	<b>CAP 809 004 V1</b>	<b>CAP 809 009 V1</b>
2"	11	35 - 48	64	64	29.2	56.5	<b>CAP 809 294 V1</b>	<b>CAP 809 299 V1</b>
2"	12	42 - 53	72	72	29.2	60	<b>CAP 809 204 V1</b>	<b>CAP 809 209 V1</b>
2 1/2"	13	50 - 62.5	85	85	42.5	67.5	<b>CAP 809 404 V1</b>	<b>CAP 809 409 V1</b>
3"	14	58 - 74	95	95	44	69	<b>CAP 809 594 V1</b>	<b>CAP 809 599 V1</b>
3"	15	66 - 78	110	110	44	80	<b>CAP 809 504 V1</b>	<b>CAP 809 509 V1</b>
3 1/2"	16	75 - 92	120	120	45.2	80	<b>CAP 809 604 V1</b>	<b>CAP 809 609 V1</b>
4"	17	82 - 104	135	135	46.5	90	<b>CAP 809 704 V1</b>	<b>CAP 809 709 V1</b>

Please use sealing washers (see page 2.3.28).

For cable gland kits with washer and lock nut please add "K1" at the end of the order No.

Example: **CAP 808 604 V1 K1** contains a **ADE 1F2 1/2"** type 6 + 1 x MsNi lock nut 1/2" + 1 x green fibre gasket for 1/2"

Dimension drawing



Type ADE 1F2

## Ex-cable glands ADE 1FC



ADE 1F2 ISO

3

### Ordering details

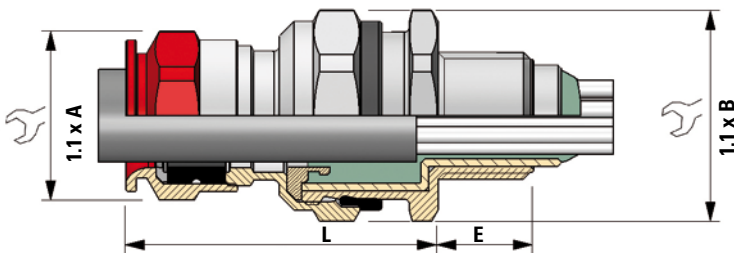
ISO	Type	Cable Ø outside mm	max. No of cores	C = max. Ø covers all cores mm	A mm	B mm	E mm	L mm	Order No. CuZn gal. Ni	Order No. stainless steel
<b>Barrier cable gland type ADE 1FC for unarmoured cable with ISO thread</b>										
M16 x 1.5	4	4.0 - 8.5	6	6.5	15	19	15	36	<b>CAP 019 594 V1</b>	<b>CAP 019 599 V1</b>
M20 x 1.5	4	4.0 - 8.5	6	6.5	15	24	15	36	<b>CAP 019 674 V1</b>	<b>CAP 019 679 V1</b>
M20 x 1.5	5	6.0 - 12.0	6	9.5	19	24	15	42	<b>CAP 019 694 V1</b>	<b>CAP 019 699 V1</b>
M20 x 1.5	6	8.5 - 16.0	10	12	24	30	15	48	<b>CAP 019 604 V1</b>	<b>CAP 019 609 V1</b>
M25 x 1.5	6	12.0 - 21.0	21	17	24	30	15	48	<b>CAP 019 704 V1</b>	<b>CAP 019 709 V1</b>
M25 x 1.5	7	8.5 - 16.0	10	12	30	41	15	58	<b>CAP 019 794 V1</b>	<b>CAP 019 799 V1</b>
M32 x 1.5	7	16.0 - 27.5	42	23	30	41	15	58	<b>CAP 019 804 V1</b>	<b>CAP 019 809 V1</b>
M32 x 1.5	8	12.0 - 21.0	21	17	41	48	15	70	<b>CAP 019 894 V1</b>	<b>CAP 019 899 V1</b>
M40 x 1.5	8	21.0 - 34.0	60	29	41	48	15	70	<b>CAP 019 904 V1</b>	<b>CAP 019 909 V1</b>
M50 x 1.5	9	21.0 - 34.0	60	29	48	55	16	79	<b>CAP 019 094 V1</b>	<b>CAP 019 099 V1</b>
M40 x 1.5	9	16.0 - 27.5	42	23	48	55	15	79	<b>CAP 019 994 V1</b>	<b>CAP 019 999 V1</b>
M50 x 1.5	10	27.0 - 41.0	80	36.5	55	64	16	88	<b>CAP 019 004 V1</b>	<b>CAP 019 009 V1</b>

Please use sealing washers (see page 2.3.28).

For cable gland kits with washer and lock nut please add "K1" at the end of the order No.

Example: **CAP 019 604 V1 K1** contains a **ADE 1FC M20 x 1.5 type 6 + 1 x MsNi lock nut M20 + 1 x green fibre gasket for M20**

### Dimension drawing



Type ADE 1FC

Dimensions in mm





ADE 1F2 NPT

Ordering details

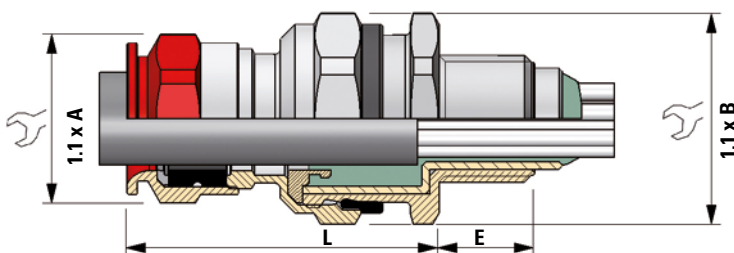
NPT	Type	Cable Ø outside mm	max. No of cores	C = max. Ø covers all cores mm	A mm	B mm	E mm	L mm	Order No. CuZn gal. Ni	Order No. stainless steel
<b>Barrier cable gland type ADE 1FC for unarmoured cable with NPT thread</b>										
3/8" NPT	4	4.0 - 8.5	6	6.5	15	19	16.6	36	<b>CAP 011 594 V1</b>	<b>CAP 011 599 V1</b>
1/2" NPT	4	4.0 - 8.5	6	6.5	15	24	22.2	36	<b>CAP 011 674 V1</b>	<b>CAP 011 679 V1</b>
1/2" NPT	5	6.0 - 12.0	6	9.5	19	24	22.2	42	<b>CAP 011 694 V1</b>	<b>CAP 011 699 V1</b>
1/2" NPT	6	8.5 - 16.0	10	12	24	30	22.2	48	<b>CAP 011 604 V1</b>	<b>CAP 011 609 V1</b>
3/4" NPT	6	8.5 - 16.0	10	12	24	30	22.2	48	<b>CAP 011 794 V1</b>	<b>CAP 011 799 V1</b>
3/4" NPT	7	12.0 - 21.0	21	17	30	41	22.2	58	<b>CAP 011 704 V1</b>	<b>CAP 011 709 V1</b>
1" NPT	7	12.0 - 21.0	21	17	30	41	27.3	58	<b>CAP 011 894 V1</b>	<b>CAP 011 899 V1</b>
1" NPT	8	16.0 - 27.5	42	23	41	48	27.3	70	<b>CAP 011 804 V1</b>	<b>CAP 011 809 V1</b>
1 1/4" NPT	8	16.0 - 27.5	42	23	41	48	28	70	<b>CAP 011 994 V1</b>	<b>CAP 011 999 V1</b>
1 1/2" NPT	9	21.0 - 34.0	60	29	48	55	28.5	79	<b>CAP 011 094 V1</b>	<b>CAP 011 099 V1</b>
1 1/4" NPT	9	21.0 - 34.0	60	29	48	55	28	79	<b>CAP 011 904 V1</b>	<b>CAP 011 909 V1</b>
2" NPT	10	27.0 - 41.0	80	36.5	55	64	29.2	88	<b>CAP 011 004 V1</b>	<b>CAP 011 009 V1</b>

Please use sealing washers (see page 2.3.28).

For cable gland kits with washer and lock nut please add "K1" at the end of the order No.

Example: **CAP 011 604 V1 K1** contains a **ADE 1FC 1/2" NPT type 6 + 1 x MsNi lock nut 1/2" NPT + 1 x green fibre gasket for 1/2" NPT**

Dimension drawing



Type ADE 1FC

## Ex-cable glands ADE 4F



ADE 4F ISO

3

### Ordering details

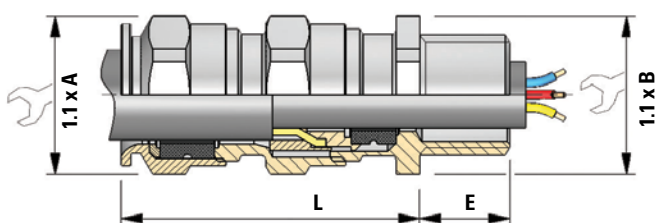
ISO	Type	Cable Ø inside mm	Cable Ø outside mm	A mm	B mm	E mm	L mm	Order No. CuZn gal. Ni	Order No. stainless steel
<b>Cable gland type ADE 4F for armoured cable with ISO thread</b>									
M12 x 1.5	5	4.5 - 8.5	7.0 - 12	19	19	15	46	<b>CAP 846 404 V1</b>	<b>CAP 846 409 V1</b>
M16 x 1.5	5	4.5 - 8.5	7.0 - 12	19	19	15	46	<b>CAP 846 594 V1</b>	<b>CAP 846 599 V1</b>
M16 x 1.5	6	7.0 - 12	10 - 16	19	24	15	51	<b>CAP 846 504 V1</b>	<b>CAP 846 509 V1</b>
M20 x 1.5	5	4.5 - 8.5	7.0 - 12	19	24	15	46	<b>CAP 846 674 V1</b>	<b>CAP 846 679 V1</b>
M20 x 1.5	6	7.0 - 12	10 - 16	24	24	15	51	<b>CAP 846 694 V1</b>	<b>CAP 846 699 V1</b>
M20 x 1.5	7	10 - 15.5	13.5 - 21	30	30	15	57.5	<b>CAP 846 604 V1</b>	<b>CAP 846 609 V1</b>
M25 x 1.5	6	7.0 - 12	10 - 16	24	30	15	51	<b>CAP 846 774 V1</b>	<b>CAP 846 779 V1</b>
M25 x 1.5	7	10 - 15.5	13.5 - 21	30	30	15	57.5	<b>CAP 846 794 V1</b>	<b>CAP 846 799 V1</b>
M25 x 1.5	8	13.5 - 20.5	18 - 27.5	41	41	15	68	<b>CAP 846 704 V1</b>	<b>CAP 846 709 V1</b>
M32 x 1.5	8	13.5 - 21	18 - 27.5	41	41	15	68	<b>CAP 846 894 V1</b>	<b>CAP 846 899 V1</b>
M32 x 1.5	9	18 - 26	23 - 34	48	48	15	76	<b>CAP 846 804 V1</b>	<b>CAP 846 809 V1</b>
M40 x 1.5	9	18 - 27.5	23 - 34	48	48	15	76	<b>CAP 846 994 V1</b>	<b>CAP 846 999 V1</b>
M40 x 1.5	10	23 - 34	29 - 41	55	55	15	88	<b>CAP 846 904 V1</b>	<b>CAP 846 909 V1</b>
M50 x 1.5	10	23 - 34	29 - 41	55	55	16	88	<b>CAP 847 094 V1</b>	<b>CAP 847 099 V1</b>
M50 x 1.5	11	29 - 41	35 - 48	64	64	16	97	<b>CAP 847 004 V1</b>	<b>CAP 847 009 V1</b>
M63 x 1.5	12	35 - 48	42 - 56	72	72	17	102	<b>CAP 847 294 V1</b>	<b>CAP 847 299 V1</b>
M63 x 1.5	13	42 - 53	50 - 65	85	85	17	117	<b>CAP 847 204 V1</b>	<b>CAP 847 209 V1</b>
M75 x 1.5	13	42 - 56	50 - 65	85	85	18	117	<b>CAP 847 394 V1</b>	<b>CAP 847 399 V1</b>
M75 x 1.5	14	50 - 62.5	58 - 74	95	95	18	124	<b>CAP 847 304 V1</b>	<b>CAP 847 309 V1</b>
M90 x 2.0	15	58 - 74	66 - 83	110	110	22	133	<b>CAP 847 594 V1</b>	<b>CAP 847 599 V1</b>
M90 x 2.0	16	66 - 78	75 - 93	120	120	22	140	<b>CAP 847 504 V1</b>	<b>CAP 847 509 V1</b>
M90 x 2.0	16/17	66 - 83	85 - 104	135	120	22	150	<b>CAP 847 574 V1</b>	<b>CAP 847 579 V1</b>
M110 x 2.0	17	75 - 93	85 - 104	135	120	22	150	<b>CAP 847 594 V1</b>	<b>CAP 847 599 V1</b>

Please use sealing washers (see page 2.3.28).

For cable gland kits with washer and lock nut please add "K1" at the end of the order No.

Example: **CAP 846 804 V1 K1** contains a **ADE 4F M32 x 1.5 type 9 + 1 x MsNi lock nut M32 + 1 x green fibre gasket for M32**

### Dimension drawing



Type ADE 4F

Dimensions in mm



ADE 4F NPT

3

## Ordering details

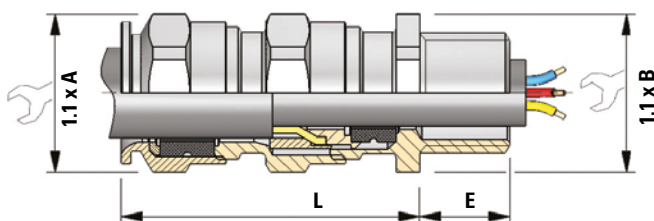
NPT	Type	Cable Ø inside mm	Cable Ø outside mm	A mm	B mm	E mm	L mm	Order No. CuZn gal. Ni	Order No. stainless steel
<b>Cable gland type ADE 4F for armoured cable with NPT thread</b>									
1/4"	5	4.5 - 8.5	7.0 - 12	19	19	16.6	46	<b>CAP 848 404 V1</b>	<b>CAP 848 409 V1</b>
3/8"	5	4.5 - 8.5	7.0 - 12	19	19	16.6	46	<b>CAP 848 594 V1</b>	<b>CAP 848 599 V1</b>
3/8"	6	7.0 - 12	10 - 16	24	24	16.6	51	<b>CAP 848 504 V1</b>	<b>CAP 848 509 V1</b>
1/2"	5	4.5 - 8.5	7.0 - 12	19	24	22.2	46	<b>CAP 848 674 V1</b>	<b>CAP 848 679 V1</b>
1/2"	6	7.0 - 12	10 - 16	24	24	22.2	51	<b>CAP 848 694 V1</b>	<b>CAP 848 699 V1</b>
1/2"	7	10 - 15.5	13.5 - 21	30	30	22.2	57.5	<b>CAP 848 604 V1</b>	<b>CAP 848 609 V1</b>
3/4"	6	7.0 - 12	10 - 16	24	30	22.5	51	<b>CAP 848 774 V1</b>	<b>CAP 848 779 V1</b>
3/4"	7	10 - 15.5	13.5 - 21	30	30	22.5	57.5	<b>CAP 848 794 V1</b>	<b>CAP 848 799 V1</b>
3/4"	8	13.5 - 20.5	18 - 27.5	41	41	22.5	68	<b>CAP 848 704 V1</b>	<b>CAP 848 709 V1</b>
1"	8	13.5 - 21	18 - 27.5	41	41	27.3	68	<b>CAP 848 894 V1</b>	<b>CAP 848 899 V1</b>
1"	9	18 - 26	23 - 34	48	48	27.3	76	<b>CAP 848 804 V1</b>	<b>CAP 848 809 V1</b>
1 1/4"	9	18 - 27.5	23 - 34	48	48	28	76	<b>CAP 848 994 V1</b>	<b>CAP 848 999 V1</b>
1 1/4"	10	23 - 34	29 - 41	55	55	28	88	<b>CAP 848 904 V1</b>	<b>CAP 848 909 V1</b>
1 1/2"	10	23 - 34	29 - 41	55	55	28.5	88	<b>CAP 849 094 V1</b>	<b>CAP 849 099 V1</b>
1 1/2"	11	29 - 41	35 - 48	64	64	28.5	97	<b>CAP 849 004 V1</b>	<b>CAP 849 009 V1</b>
2"	12	35 - 48	42 - 56	72	72	29.2	102	<b>CAP 849 294 V1</b>	<b>CAP 849 299 V1</b>
2"	13	42 - 53	50 - 65	85	85	29.2	117	<b>CAP 849 204 V1</b>	<b>CAP 849 209 V1</b>
2 1/2"	13	42 - 56	50 - 65	85	85	42.5	117	<b>CAP 849 494 V1</b>	<b>CAP 849 499 V1</b>
2 1/2"	14	50 - 62.5	58 - 74	95	95	42.5	124	<b>CAP 849 404 V1</b>	<b>CAP 849 409 V1</b>
3"	15	58 - 74	66 - 83	110	110	44	133	<b>CAP 849 594 V1</b>	<b>CAP 849 599 V1</b>
3"	16	66 - 78	75 - 93	120	120	44	140	<b>CAP 849 504 V1</b>	<b>CAP 849 509 V1</b>
3 1/2"	17	85 - 104	135	120	120	45.2	150	<b>CAP 849 604 V1</b>	<b>CAP 849 609 V1</b>
4"	17	85 - 104	135	120	120	46.5	150	<b>CAP 849 704 V1</b>	<b>CAP 849 709 V1</b>

Please use sealing washers (see page 2.3.28).

For cable gland kits with washer and lock nut please add "K1" at the end of the order No.

Example: **CAP 848 994 V1 K1** contains a **ADE 4F -1 1/4" type 9 + 1 x MsNi lock nut 1 1/4" + 1 x green fibre gasket for 1 1/4"**

## Dimension drawing



Type ADE 4F

## Ex-cable glands ADE 5F



ADE 5F ISO

3

### Ordering details

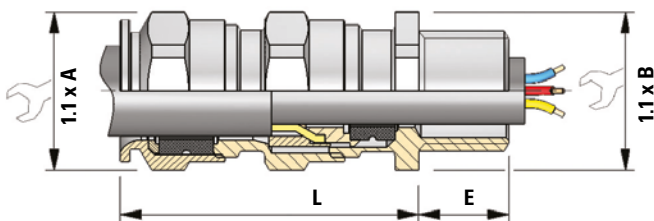
ISO	Type	Cable Ø inside mm	Cable Ø outside mm	A mm	B mm	E mm	L mm	Order No. CuZn gal. Ni	Order No. stainless steel
<b>Cable gland type ADE 5F for armoured cable with ISO thread</b>									
M12 x 1.5	5	4.5 - 8.0	7.0 - 12	19	19	15	55	<b>CAP 846 404 V1</b>	<b>CAP 846 409 V1</b>
M16 x 1.5	5	4.5 - 8.0	7.0 - 12	19	19	15	55	<b>CAP 846 594 V1</b>	<b>CAP 846 599 V1</b>
M16 x 1.5	6	7.0 - 12.0	7.0 - 12	19	24	15	57	<b>CAP 846 674 V1</b>	<b>CAP 846 679 V1</b>
M20 x 1.5	5	4.5 - 8.0	10 - 16	19	24	15	55	<b>CAP 846 504 V1</b>	<b>CAP 846 509 V1</b>
M20 x 1.5	6	7.0 - 12.0	10 - 16	24	24	15	57	<b>CAP 846 694 V1</b>	<b>CAP 846 699 V1</b>
M20 x 1.5	7	10.0 - 15.5	10 - 16	24	30	15	64	<b>CAP 846 774 V1</b>	<b>CAP 846 779 V1</b>
M25 x 1.5	6	7.0 - 12.0	13.5 - 21	30	30	15	57	<b>CAP 846 604 V1</b>	<b>CAP 846 609 V1</b>
M25 x 1.5	7	10.0 - 15.5	13.5 - 21	30	30	15	64	<b>CAP 846 794 V1</b>	<b>CAP 846 799 V1</b>
M25 x 1.5	8	13.5 - 20.5	18 - 27.5	41	41	15	75	<b>CAP 846 704 V1</b>	<b>CAP 846 709 V1</b>
M32 x 1.5	8	13.5 - 21.0	18 - 27.5	41	41	15	75	<b>CAP 846 894 V1</b>	<b>CAP 846 899 V1</b>
M32 x 1.5	9	18.0 - 26.0	23 - 34	48	48	15	83	<b>CAP 846 804 V1</b>	<b>CAP 846 809 V1</b>
M40 x 1.5	9	18.0 - 27.5	23 - 34	48	48	15	83	<b>CAP 846 994 V1</b>	<b>CAP 846 999 V1</b>
M40 x 1.5	10	23.0 - 34.0	29 - 41	55	55	15	90	<b>CAP 846 904 V1</b>	<b>CAP 846 909 V1</b>
M50 x 1.5	10	23.0 - 34.0	29 - 41	55	55	16	90	<b>CAP 847 094 V1</b>	<b>CAP 847 099 V1</b>
M50 x 1.5	11	29.0 - 41.0	35 - 48	64	64	16	99	<b>CAP 847 004 V1</b>	<b>CAP 847 009 V1</b>
M63 x 1.5	12	35.0 - 48.0	42 - 56	72	72	17	108	<b>CAP 847 294 V1</b>	<b>CAP 847 299 V1</b>
M63 x 1.5	13	42.0 - 53.0	50 - 65	85	85	17	120	<b>CAP 847 204 V1</b>	<b>CAP 847 209 V1</b>
M75 x 1.5	13	42.0 - 56.0	50 - 65	85	85	18	120	<b>CAP 847 394 V1</b>	<b>CAP 847 399 V1</b>
M75 x 1.5	14	50.0 - 62.5	58 - 74	95	95	18	128	<b>CAP 847 304 V1</b>	<b>CAP 847 309 V1</b>
M90 x 2	15	58.0 - 74.0	66 - 83	95	95	20	150	<b>CAP 847 494 V1</b>	<b>CAP 847 499 V1</b>
M90 x 2	16	66.0 - 78.0	75 - 93	110	110	20	160	<b>CAP 847 404 V1</b>	<b>CAP 847 409 V1</b>
M90 x 2	16/17	66.0 - 83.0	85 - 104	110	110	20	172	<b>CAP 847 404 V1</b>	<b>CAP 847 409 V1</b>
M110 x 2	17	75.0 - 93.0	85 - 104	110	110	22	172	<b>CAP 847 594 V1</b>	<b>CAP 847 599 V1</b>

Please use sealing washers (see page 2.3.28).

For cable gland kits with washer and lock nut please add "K1" at the end of the order No.

Example: **CAP 846 804 V1 K1** contains a **ADE 4F M32 x 1.5 type 9 + 1 x MsNi lock nut M32 + 1 x green fibre gasket for M32**

### Dimension drawing



Type ADE 5F

Dimensions in mm



ADE 5F NPT

Ordering details

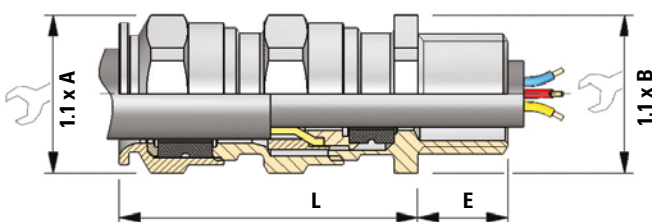
NPT	Type	Cable Ø inside mm	Cable Ø outside mm	A mm	B mm	E mm	L mm	Order No. CuZn gal. Ni	Order No. stainless steel
<b>Cable gland type ADE 4F for armoured cable with NPT thread</b>									
1/4"NPT	5	4.5 - 8.0	7.0 - 12	19	19	16.6	55	CAP 858 404 V1	CAP 858 409 V1
3/8"NPT	5	4.5 - 8.0	7.0 - 12	19	19	16.6	55	CAP 858 594 V1	CAP 858 599 V1
3/8"NPT	6	7.0 - 12.0	7.0 - 12	24	24	16.6	57	CAP 858 504 V1	CAP 858 509 V1
1/2"NPT	5	4.5 - 8.0	10 - 16	19	24	22.2	55	CAP 858 674 V1	CAP 858 679 V1
1/2"NPT	6	7.0 - 12.0	10 - 16	24	24	22.2	57	CAP 858 694 V1	CAP 858 699 V1
3/4"NPT	6	10.0 - 15.5	10 - 16	24	30	22.5	64	CAP 858 774 V1	CAP 858 779 V1
1/2"NPT	7	7.0 - 12.0	13.5 - 21	30	30	22.2	57	CAP 858 604 V1	CAP 858 609 V1
3/4"NPT	7	10.0 - 15.5	13.5 - 21	30	30	22.5	64	CAP 858 794 V1	CAP 858 799 V1
3/4"NPT	8	13.5 - 20.5	18 - 27.5	41	41	22.5	75	CAP 858 704 V1	CAP 858 709 V1
1"NPT	8	13.5 - 21.0	18 - 27.5	41	41	27.3	75	CAP 858 894 V1	CAP 858 899 V1
1"NPT	9	18.0 - 26.0	23 - 34	48	48	27.3	83	CAP 858 804 V1	CAP 858 809 V1
1 1/4"NPT	9	18.0 - 27.5	23 - 34	48	48	28.0	83	CAP 858 994 V1	CAP 858 999 V1
1 1/4"NPT	10	23.0 - 34.0	29 - 41	55	55	28.0	90	CAP 858 904 V1	CAP 858 909 V1
1 1/2"NPT	10	23.0 - 34.0	29 - 41	55	55	28.5	90	CAP 859 094 V1	CAP 859 099 V1
1 1/2"NPT	11	29.0 - 41.0	35 - 48	64	64	28.5	99	CAP 859 004 V1	CAP 859 009 V1
2"NPT	12	35.0 - 48.0	42 - 56	72	72	29.2	108	CAP 859 294 V1	CAP 859 299 V1
2"NPT	13	42.0 - 53.0	50 - 65	85	85	29.2	120	CAP 859 204 V1	CAP 859 209 V1
2 1/2"NPT	13	42.0 - 56.0	50 - 65	85	85	42.5	120	CAP 859 494 V1	CAP 859 499 V1
2 1/2"NPT	14	50.0 - 62.5	58 - 74	95	95	42.5	128	CAP 859 404 V1	CAP 859 409 V1
3"NPT	15	58.0 - 74.0	66 - 83	120	120	44.0	150	CAP 859 594 V1	CAP 859 599 V1
3"NPT	16	66.0 - 78.0	75 - 93	110	110	44.0	160	CAP 859 504 V1	CAP 859 509 V1
3 1/2"NPT	16	66.0 - 83.0	85 - 104	135	135	45.2	172	CAP 859 604 V1	CAP 859 609 V1
4"NPT	17	75.0 - 93.0	85 - 104	135	135	46.5	172	CAP 859 704 V1	CAP 859 709 V1

Please use sealing washers (see page 2.3.28).

For cable gland kits with washer and lock nut please add "K1" at the end of the order No.

Example: CAP 858 994 V1 K1 contains a ADE 4F -1 1/4" type 9 + 1 x MsNi lock nut 1 1/4" + 1 x green fibre gasket for 1 1/4"

Dimension drawing



Type ADE 5F

## Ex-cable glands ADE 6F



ADE 6F ISO

3

### Ordering details

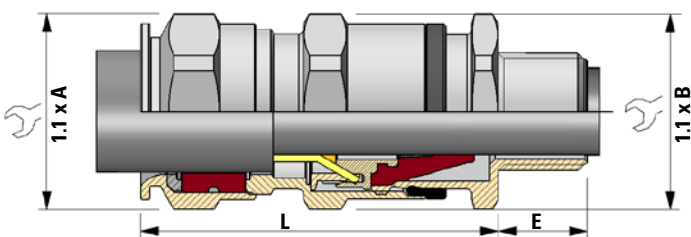
ISO	Type	Cable Ø inside mm	Cable Ø outside mm	A mm	B mm	E mm	L mm	Order No. CuZn gal. Ni silicon	Order No. stainless steel silicon
<b>Cable gland type ADE 6F for armoured cable with ISO thread</b>									
M16 x 1.5	5	3 - 7.5	6 - 12	19	19	15	47.5	<b>CAP 965 595 V1</b>	<b>CAP 965 596 V1</b>
M20 x 1.5	5	3 - 7.5	6 - 12	19	24	15	47.5	<b>CAP 965 675 V1</b>	<b>CAP 965 676 V1</b>
M20 x 1.5	6	6.5 - 11	8.5 - 16	24	24	15	54.5	<b>CAP 965 695 V1</b>	<b>CAP 965 696 V1</b>
M20 x 1.5	7	9 - 14.5	12 - 21	30	30	15	60.5	<b>CAP 965 605 V1</b>	<b>CAP 965 606 V1</b>
M25 x 1.5	7	9 - 14.5	12 - 21	30	30	15	60.5	<b>CAP 965 795 V1</b>	<b>CAP 965 796 V1</b>
M25 x 1.5	8	12 - 19.5	16 - 27.5	41	41	15	74	<b>CAP 965 705 V1</b>	<b>CAP 965 706 V1</b>
M32 x 1.5	8	12 - 19.5	16 - 27.5	41	41	15	74	<b>CAP 965 895 V1</b>	<b>CAP 965 896 V1</b>
M32 x 1.5	9	17.5 - 26	21 - 34	48	48	15	83	<b>CAP 965 805 V1</b>	<b>CAP 965 806 V1</b>
M40 x 1.5	9	17.5 - 26	21 - 34	48	48	15	83	<b>CAP 965 995 V1</b>	<b>CAP 965 996 V1</b>
M40 x 1.5	10	23 - 33	27 - 41	55	55	15	92	<b>CAP 965 905 V1</b>	<b>CAP 965 906 V1</b>
M50 x 1.5	10	23 - 33	27 - 41	55	55	16	92	<b>CAP 966 095 V1</b>	<b>CAP 966 096 V1</b>
M50 x 1.5	11	27 - 41	33 - 48	64	64	16	104	<b>CAP 966 005 V1</b>	<b>CAP 966 006 V1</b>

Please use sealing washers (see page 2.3.28).

For cable gland kits with washer and lock nut please add "K1" at the end of the order No.

Example: **CAP 965 795 V1 K1** contains a **ADE 6F M25 x 1.5 type 7** + **1 x MsNi lock nut** + **1 x M25** + **1 x green fibre gasket for M25**

### Dimension drawing



Type ADE 6F ISO

Dimensions in mm



ADE 6F NPT

Ordering details

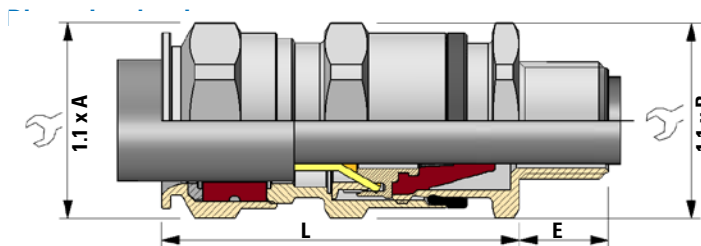
NPT	Type	Cable Ø inside mm	Cable Ø outside mm	A mm	B mm	E mm	L mm	Order No. CuZn gal. Ni	Order No. stainless steel
<b>Cable gland type ADE 6F for armoured cable with NPT thread</b>									
3/8"	5	3 - 7.5	6 - 12	19	19	12	47.5	<b>CAP 967 595 V1</b>	<b>CAP 967 596 V1</b>
1/2"	5	3 - 7.5	6 - 12	19	24	22.2	47.5	<b>CAP 967 675 V1</b>	<b>CAP 967 676 V1</b>
1/2"	6	6.5 - 11	8.5 - 16	24	24	22.2	54.5	<b>CAP 967 695 V1</b>	<b>CAP 967 696 V1</b>
1/2"	7	9 - 14.5	12 - 21	30	30	22.2	60.5	<b>CAP 967 605 V1</b>	<b>CAP 967 606 V1</b>
3/4"	7	9 - 14.5	12 - 21	30	30	22.5	60.5	<b>CAP 967 795 V1</b>	<b>CAP 967 796 V1</b>
3/4"	8	12 - 19.5	16 - 27.5	41	41	22.5	74	<b>CAP 967 705 V1</b>	<b>CAP 967 706 V1</b>
1"	8	12 - 19.5	16 - 27.5	41	41	27.3	74	<b>CAP 967 895 V1</b>	<b>CAP 967 896 V1</b>
1"	9	17.5 - 26	21 - 34	48	48	27.3	83	<b>CAP 967 805 V1</b>	<b>CAP 967 806 V1</b>
1 1/4"	9	17.5 - 26	21 - 34	48	48	28	83	<b>CAP 967 995 V1</b>	<b>CAP 967 996 V1</b>
1 1/4"	10	23 - 33	27 - 41	55	55	28	92	<b>CAP 967 905 V1</b>	<b>CAP 967 906 V1</b>
1 1/2"	10	23 - 33	27 - 41	55	55	28.5	92	<b>CAP 968 095 V1</b>	<b>CAP 968 096 V1</b>
2"	11	27 - 41	33 - 48	64	64	29.2	104	<b>CAP 968 295 V1</b>	<b>CAP 968 296 V1</b>

Please use sealing washers (see page 2.3.28).

For cable gland kits with washer and lock nut please add "K1" at the end of the order No.

Example: **CAP 967 705 V1 K1** contains a **ADE 6F 3/4"** type **8** + **1 x MsNi lock nut 1 x 3/4"** + **1 x green fibre gasket for 3/4"**

Dimension drawing



Type ADE 6F NPT

Dimensions in mm

## Ex-cable glands ADE 6FC



ADE 6FC ISO

3

### Ordering details

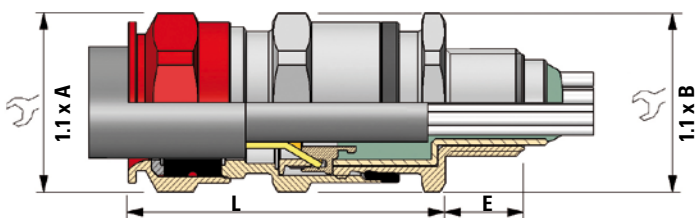
ISO	Type	Cable Ø outside mm	max. No of cores	C = max. Ø covers all cores mm	A mm	B mm	E mm	L mm	Order No. CuZn gal. Ni silicon	Order No. stainless steel silicon
<b>Barrier cable gland type ADE 6FC for armoured cable with ISO thread</b>										
M16 x 1.5	5	6 - 12	6	6.5	19	19	15	46	CAP 969 594 V1	CAP 969 599 V1
M20 x 1.5	5	6 - 12	6	6.5	24	24	15	46	CAP 969 674 V1	CAP 969 679 V1
M20 x 1.5	6	8.5 - 16	6	9.5	24	24	15	53	CAP 969 694 V1	CAP 969 699 V1
M20 x 1.5	7	12 - 21	10	12	30	30	15	59	CAP 969 604 V1	CAP 969 609 V1
M25 x 1.5	7	12 - 21	10	12	30	30	15	59	CAP 969 794 V1	CAP 969 799 V1
M25 x 1.5	8	16 - 27.5	21	17	41	41	15	74.5	CAP 969 704 V1	CAP 969 709 V1
M32 x 1.5	8	16 - 27.5	21	17	41	41	15	74.5	CAP 969 894 V1	CAP 969 899 V1
M32 x 1.5	9	21 - 34	42	23	48	48	15	83.5	CAP 969 804 V1	CAP 969 809 V1
M40 x 1.5	9	21 - 34	42	23	48	48	15	83.5	CAP 969 994 V1	CAP 969 999 V1
M40 x 1.5	10	27 - 41	60	29	55	55	15	92	CAP 969 904 V1	CAP 969 909 V1
M50 x 1.5	10	27 - 41	60	29	55	55	16	92	CAP 970 094 V1	CAP 970 099 V1
M50 x 1.5	11	33 - 48	80	36.5	64	64	16	104	CAP 970 004 V1	CAP 970 009 V1

Please use sealing washers (see page 2.3.28).

For cable gland kits with washer and lock nut please add "K1" at the end of the order No.

Example: **CAP 969 794 V1 K1** contains a **ADE 6FC M25 x 1.5 type 7 + 1 x MsNi lock nut 1 x M25 + 1 x green fibre gasket for M25**

### Dimension drawing



Type ADE 6FC ISO

Dimensions in mm





ADE 6F NPT

Ordering details

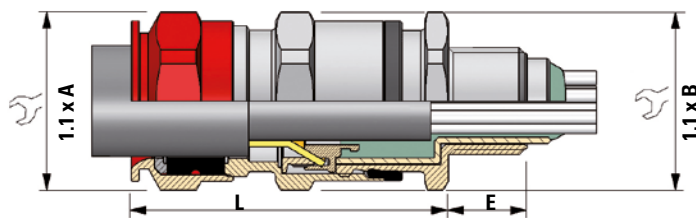
ISO	Type	Cable Ø outside mm	max. No of cores	C = max. Ø covers all cores mm	A mm	B mm	E mm	L mm	Order No. CuZn gal. Ni silicon	Order No. stainless steel silicon
<b>Barrier cable gland type ADE 6FC for armoured cable with NPT thread</b>										
3/8" NPT	5	6 - 12	6	6.5	19	19	12	46	CAP 971 594 V1	CAP 971 599 V1
1/2" NPT	5	6 - 12	6	6.5	24	24	22.2	46	CAP 971 674 V1	CAP 971 679 V1
1/2" NPT	6	8.5 - 16	6	9.5	24	24	22.2	53	CAP 971 694 V1	CAP 971 699 V1
1/2" NPT	7	12 - 21	10	12	30	30	22.2	59	CAP 971 604 V1	CAP 971 609 V1
3/4" NPT	7	12 - 21	10	12	30	30	22.5	59	CAP 971 794 V1	CAP 971 799 V1
3/4" NPT	8	16 - 27.5	21	17	41	41	22.5	74.5	CAP 971 704 V1	CAP 971 709 V1
1" NPT	8	16 - 27.5	21	17	41	41	27.3	74.5	CAP 971 894 V1	CAP 971 899 V1
1" NPT	9	21 - 34	42	23	48	48	27.3	83.5	CAP 971 804 V1	CAP 971 809 V1
1 1/4" NPT	9	21 - 34	42	23	48	48	28	83.5	CAP 971 994 V1	CAP 971 999 V1
1 1/4" NPT	10	27 - 41	60	29	55	55	28	92	CAP 971 904 V1	CAP 971 909 V1
1 1/2" NPT	10	27 - 41	60	29	55	55	28.5	92	CAP 972 094 V1	CAP 972 099 V1
2" NPT	11	33 - 48	80	36.5	64	64	29.2	104	CAP 972 294 V1	CAP 972 299 V1

Please use sealing washers (see page 2.3.28).

For cable gland kits with washer and lock nut please add "K1" at the end of the order No.

Example: CAP 971 994 V1 K1 contains a ADE 6FC 1 1/4" NPT type 9 + 1 x MsNi lock nut 1 x M25 + 1 x green fibre gasket for 1 1/4" NPT

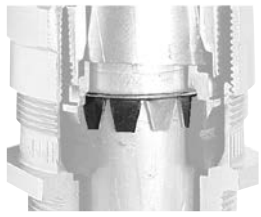
Dimension drawing



Type ADE 6FC NPT

Dimensions in mm

## Accessories for Ex-cable glands ADE



Lead sheath washer



Strain clamp



PVC-Shroud

3

### Accessories for cable glands type ADE

Type ADE	Ø D/mm	OU	Order No.
<b>Ordering details shrouds for cable glands</b>			
4	16	10	<b>CAP 506 040</b>
5	20	10	<b>CAP 506 050</b>
6	25	10	<b>CAP 506 060</b>
7	31	10	<b>CAP 506 070</b>
8	43	10	<b>CAP 506 080</b>
9	52	10	<b>CAP 506 090</b>
10	59	10	<b>CAP 506 100</b>
11	67	10	<b>CAP 506 110</b>
12	75	10	<b>CAP 506 120</b>
13	90	10	<b>CAP 506 130</b>
14	100	10	<b>CAP 506 140</b>
15	116	10	<b>CAP 506 150</b>
16	127	10	<b>CAP 506 160</b>

Type ADE	for cable Ø mm	for A/F	B mm	C mm	Weight approx. kg	OU	Order No.
<b>Ordering details for strain clamp</b>							
4	4 – 8.5	17	20	5	0.0085	1	<b>CAP 810 444</b>
5	6 – 12	19	22	5	0.007	1	<b>CAP 810 534</b>
6	8.5 – 16	24	27.5	6	0.015	1	<b>CAP 810 634</b>
7	12 – 21	30	33.5	8	0.028	1	<b>CAP 810 734</b>
8	16 – 27.5	41	45	8	0.044	1	<b>CAP 810 834</b>
9	21 – 34	48	52	9.5	0.061	1	<b>CAP 810 934</b>
10	27 – 41	55	59	9.5	0.069	1	<b>CAP 811 034</b>
11	33 – 48	64	69	12	0.13	1	<b>CAP 811 134</b>
12	40 – 56	72	78	12	0.16	1	<b>CAP 811 234</b>
13	47 – 65	85	92	16	0.37	1	<b>CAP 811 334</b>
14	54 – 74	95	103	16	0.42	1	<b>CAP 811 434</b>
15	63 – 83	110	118	18	0.64	1	<b>CAP 811 534</b>
16	72 – 93	120	128	18	0.68	1	<b>CAP 811 634</b>

Type ADE	for outer lead sheath Ø mm	A mm	H mm	Weight/g	OU	Order No.
<b>Ordering details lead sheath washer for use with lead cables in combination with ADE 4F glands</b>						
5	4.5 – 7.5	10	3.2	0.25	10	<b>CAP 560 530</b>
6	7 – 11	13.9	4	0.3	10	<b>CAP 560 630</b>
7	10 – 15	18.3	4.8	0.6	10	<b>CAP 560 730</b>
8	13.5 – 20	23.8	5.7	0.9	10	<b>CAP 560 830</b>
9	18 – 26.5	31	7.2	1.5	10	<b>CAP 560 930</b>
10	23 – 32.5	38.3	8.2	2.8	10	<b>CAP 561 030</b>
11	29 – 39.5	45.3	8.8	3.8	10	<b>CAP 561 130</b>
12	35 – 46.5	52.8	9.5	5.8	10	<b>CAP 561 230</b>
13	42 – 54.5	60.8	10.1	7.3	10	<b>CAP 561 330</b>
14	50 – 61	71	11.4	11	10	<b>CAP 561 430</b>
15	58 – 72.5	80.5	12.6	14.5	10	<b>CAP 561 530</b>
16	66 – 81.5	89.5	12.6	14.5	10	<b>CAP 561 630</b>

Cable glands with PG-thread are available on request.

The order No. will show 1 pcs.

Please note that only order units (OU) can be ordered.



Lock nut



Earth tag

Accessories for cable glands type ADE

Thread	Dimensions A mm	B mm	ØC mm	ØD mm	E mm	Weight approx. kg	OU	Order No.
<b>Ordering details earth tag for glands</b>								
M12 x 1.5 ISO	48.75	30	6.75	24.5	13	0.008	10	<b>CAP 567 024</b>
M16 x 1.5 ISO	48.75	30	6.75	24.5	13	0.008	10	<b>CAP 567 034</b>
M20 x 1.5 ISO	53.8	33	7	28.6	13	0.008	10	<b>CAP 567 054</b>
M25 x 1.5 ISO	61.5	36	10.5	34	17	0.011	10	<b>CAP 567 074</b>
M32 x 1.5 ISO	73	41	12.2	42	22	0.015	10	<b>CAP 567 094</b>
M40 x 1.5 ISO	86.5	44.5	13.5	54	30	0.025	1	<b>CAP 567 124</b>
M50 x 1.5 ISO	111.5	58	13.5	67	40	0.041	1	<b>CAP 567 154</b>
M63 x 1.5 ISO	125.5	67	13.5	77	40	0.044	1	<b>CAP 567 184</b>
3/8" NPT	53.8	33	7	28.6	13	0.008	10	<b>CAP 567 044</b>
1/2" NPT	61.5	36	10.5	34	17	0.008	10	<b>CAP 567 064</b>
3/4" NPT	73	41	12.2	42	22	0.008	10	<b>CAP 567 084</b>
1" NPT	73	41	12.2	42	22	0.011	10	<b>CAP 567 104</b>
1 1/4" NPT	86.5	44.5	13.5	54	30	0.015	10	<b>CAP 567 134</b>
1 1/2" NPT	111.5	58	13.5	67	40	0.025	1	<b>CAP 567 154</b>
2" NPT	125.5	67	13.5	77	40	0.041	1	<b>CAP 567 174</b>
2 1/2" NPT	137.5	73	13.5	89	40	0.044	1	<b>CAP 567 194</b>

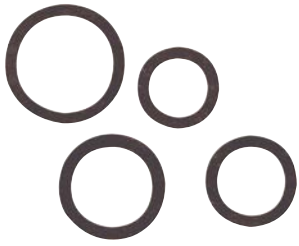
Thread ISO/NPT	A/F mm	L mm	OU	Order No.
<b>Ordering details lock nut CuZn gal. Ni</b>				
M12 x 1.5 ISO	14	2.8	10	<b>CAP 221 294</b>
M16 x 1.5 ISO	18	2.8	10	<b>CAP 221 694</b>
M20 x 1.5 ISO	23	3.0	10	<b>CAP 222 094</b>
M25 x 1.5 ISO	28	3.0	10	<b>CAP 222 594</b>
M32 x 1.5 ISO	36	3.5	10	<b>CAP 223 294</b>
M40 x 1.5 ISO	44	4.0	10	<b>CAP 224 094</b>
M50 x 1.5 ISO	54	5.0	10	<b>CAP 225 094</b>
M63 x 1.5 ISO	70	6.0	10	<b>CAP 226 394</b>
1/4" NPT	16	2.8	10	<b>CAP 280 104</b>
3/8" NPT	20	2.8	10	<b>CAP 280 114</b>
1/2" NPT	24	3.5	10	<b>CAP 280 124</b>
3/4" NPT	30	3.5	10	<b>CAP 280 134</b>
1" NPT	37	4.5	10	<b>CAP 280 144</b>
1 1/4" NPT	47	4.5	10	<b>CAP 280 154</b>
1 1/2" NPT	52	5.0	10	<b>CAP 280 164</b>
2" NPT	64	5.5	10	<b>CAP 280 174</b>
2 1/2" NPT	77	6.5	10	<b>CAP 280 184</b>
3" NPT	95	8.0	10	<b>CAP 280 194</b>
3 1/2" NPT	110	10.0	10	<b>CAP 280 204</b>
4" NPT	120	11.0	10	<b>CAP 280 214</b>

Cable glands with PG-thread are available on request.

The order No. will show 1 pcs.

Please note that only order units (OU) can be ordered.

## Accessories for Ex-cable glands ADE



Gasket

3

### Accessories for cable glands type ADE

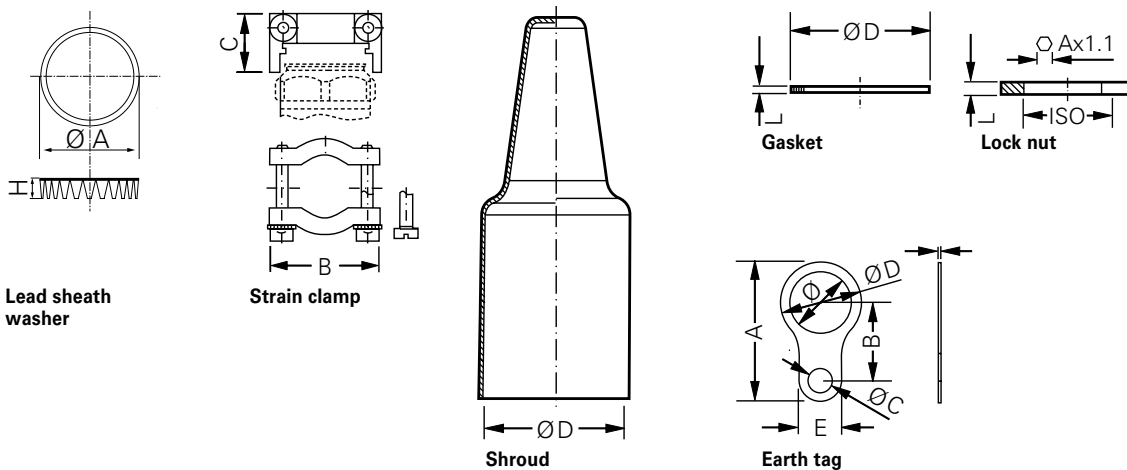
Thread	Ø D mm	L mm	OU	Order No. fibrous material	Order No. neopren
<b>Ordering details gasket for glands</b>					
M12	18	1.2	10	CAP 221 245	CAP 221 249
M16	22	1.2	10	CAP 221 645	CAP 221 649
M20	24	1.2	10	CAP 222 045	CAP 222 049
M25	30	1.5	10	CAP 222 545	CAP 222 549
M32	42	1.5	10	CAP 223 245	CAP 223 249
M40	52	1.5	10	CAP 224 045	CAP 224 049
M50	63	1.5	10	CAP 225 045	CAP 225 049
M63	77	2.0	10	CAP 226 345	CAP 226 349
1/4"	20	1.5	10	CAP 239 014	CAP 229 014
3/8"	22	1.5	10	CAP 239 038	CAP 229 038
1/2"	27	1.5	10	CAP 239 012	CAP 229 012
3/4"	33	1.5	10	CAP 239 034	CAP 229 034
1"	41	1.5	10	CAP 239 010	CAP 229 010
1 1/4"	52	1.5	10	CAP 239 114	CAP 229 114
1 1/2"	57	1.5	10	CAP 239 112	CAP 229 112
2"	71	2.0	10	CAP 239 020	CAP 229 020
2 1/2"	85	2.0	10	CAP 239 212	CAP 229 212
3"	104	2.0	10	CAP 238 049	CAP 229 300
3 1/2"	120	2.0	10	CAP 239 312	CAP 229 312

Cable glands with PG-thread are available on request.

The order No. will show 1 pcs.

Please note that only order units (OU) can be ordered.

### Dimension drawing



Dimensions in mm



## Ex-d/e metal reducing rings/screw plugs



Reducing rings



Screw plug

3

### Technical data

#### Ex-d metal reducing rings | screw plug | adapter ISO-NPT

Marking accd. to 2014/34/EU	⊕ II 2 G Ex e II Gb / Ex d II Gb / Ex d IIC / ⊕ II 2 D tb IIIC Db
EC-Type Examination Certificate	SIRA 10 ATEX 1225 X
Permissible ambient temperature	-60 °C to +200 °C
Degree of protection accd. to EN 60529	IP66 / IP68 - 10 bar
Enclosure material	Nickel-plated brass (stainless steel, bronze, natural brass option)

Please use sealing washers (see page 2.3.28).



Reducing rings

## Ordering details

Thread 1 (male)	Thread 2 (female)	A mm	L mm	E mm	Order No.
<b>Reducing rings ISO for metric thread, CuZn gal. Ni</b>					
M16 x 1.5	M12 x 1.5	18	2.8	15	<b>CAP 745 834</b>
M20 x 1.5	M12 x 1.5	23	3.0	15	<b>CAP 745 844</b>
M20 x 1.5	M16 x 1.5	23	3.0	15	<b>CAP 740 024</b>
M25 x 1.5	M16 x 1.5	28	3.0	15	<b>CAP 740 034</b>
M25 x 1.5	M20 x 1.5	28	3.0	15	<b>CAP 740 294</b>
M32 x 1.5	M20 x 1.5	36	3.5	15	<b>CAP 740 304</b>
M32 x 1.5	M25 x 1.5	36	3.5	15	<b>CAP 740 564</b>
M40 x 1.5	M25 x 1.5	44	4.0	15	<b>CAP 740 574</b>
M40 x 1.5	M32 x 1.5	44	4.0	15	<b>CAP 740 834</b>
M50 x 1.5	M32 x 1.5	54	5.0	16	<b>CAP 740 844</b>
M50 x 1.5	M40 x 1.5	54	5.0	16	<b>CAP 741 104</b>
M63 x 1.5	M40 x 1.5	67	5.5	17	<b>CAP 741 114</b>
M63 x 1.5	M50 x 1.5	67	5.5	17	<b>CAP 741 374</b>
M75 x 1.5	M32 x 1.5	80	6.0	18	<b>CAP 740 864</b>
M75 x 1.5	M40 x 1.5	80	6.0	18	<b>CAP 741 124</b>
M75 x 1.5	M50 x 1.5	80	6.0	18	<b>CAP 741 384</b>
M75 x 1.5	M63 x 1.5	80	6.0	18	<b>CAP 741 644</b>
M90 x 2.0	M63 x 1.5	95	8.0	22	<b>CAP 745 854</b>
M90 x 2.0	M75 x 2.0	95	8.0	22	<b>CAP 745 864</b>
M100 x 2.0	M75 x 2.0	110	10.0	22	<b>CAP 745 874</b>
M100 x 2.0	M90 x 2.0	120	10.0	22	<b>CAP 745 914</b>
M110 x 2.0	M90 x 2.0	120	11.0	22	<b>CAP 745 924</b>
M110 x 2.0	M100 x 2.0	120	11.0	22	<b>CAP 745 934</b>
<b>Reducing rings NPT, CuZn gal. Ni</b>					
3/8"	1/4"	18	2.8	12	<b>CAP 745 574</b>
1/2"	2/4"	22	3.0	16	<b>CAP 745 584</b>
1/2"	3/8"	22	3.0	16	<b>CAP 745 594</b>
3/4"	3/8"	28	3.0	16	<b>CAP 745 604</b>
3/4"	1/2"	28	3.0	16	<b>CAP 744 884</b>
1"	1/2"	36	3.5	20	<b>CAP 744 894</b>
1"	3/4"	36	3.5	20	<b>CAP 745 154</b>
1"1/4	3/4"	44	4.0	20	<b>CAP 745 164</b>
1"1/4	1"	44	4.0	20	<b>CAP 745 424</b>
1"1/2	1"	50	5.0	20	<b>CAP 745 434</b>
1"1/2	1"1/4	50	5.0	20	<b>CAP 745 694</b>
2"	1"	64	5.5	20	<b>CAP 745 444</b>
2"	1"1/4	64	5.5	20	<b>CAP 745 704</b>
2"	1"1/2	64	5.5	20	<b>CAP 745 964</b>
2"1/2	1"1/2	75	6.0	28	<b>CAP 745 974</b>
2"1/2	2"	75	6.0	28	<b>CAP 746 234</b>
3"	2"	90	8.0	30	<b>CAP 746 244</b>
3"	2"1/2	90	8.0	30	<b>CAP 746 504</b>
3"1/2	2"1/2	110	10.0	32	<b>CAP 745 654</b>
3"1/2	3"	110	10.0	32	<b>CAP 745 664</b>
4"	3"	120	11.0	32	<b>CAP 746 834</b>
4"	3"1/2	120	11.0	32	<b>CAP 745 734</b>

## Ex-d/e metal reducing rings/screw plugs



Screw plug

3

### Ordering details

Thread 1 (male)	A mm	L mm	E mm	Order No.
<b>Screw plug with ISO thread, CuZn gal. Ni</b>				
M12 x 1.5	14	2.8	15	<b>CAP 190 124</b>
M16 x 1.5	18	3.0	15	<b>CAP 190 164</b>
M20 x 1.5	23	3.0	15	<b>CAP 190 204</b>
M25 x 1.5	28	3.5	15	<b>CAP 190 254</b>
M32 x 1.5	36	4.0	15	<b>CAP 190 324</b>
M40 x 1.5	44	4.0	15	<b>CAP 190 404</b>
M50 x 1.5	54	5.0	16	<b>CAP 190 504</b>
M63 x 1.5	67	5.5	17	<b>CAP 190 634</b>
<b>Screw plug with NPT thread, CuZn gal. Ni</b>				
1/4 "	14	2.8	12	<b>CAP 190 194</b>
3/8 "	18	2.8	12	<b>CAP 190 294</b>
1/2 "	22	3.0	16	<b>CAP 190 394</b>
3/4 "	28	3.0	16	<b>CAP 190 494</b>
1 "	36	3.5	20	<b>CAP 190 594</b>
1 " 1/4	44	4.0	20	<b>CAP 190 694</b>
1 " 1/2	50	5.0	20	<b>CAP 190 794</b>
2 "	64	5.5	20	<b>CAP 190 894</b>
2 " 1/2	75	6.0	28	<b>CAP 190 994</b>
3 "	90	8.0	30	<b>CAP 191 094</b>
3 " 1/2	110	10.0	32	<b>CAP 191 194</b>
4 "	120	11.0	32	<b>CAP 191 294</b>

Please use sealing washers (see page 2.3.28).





Adapter rings

Ordering details

Thread 1 (male)	Thread 2 (female)	A mm	L mm	E mm	Ø D mm	Order No.
<b>Adapter ISO - NPT, CuZn gal. Ni</b>						
M20 x 1.5	1/2 " NPT	24	18	15	15.5	<b>CAP 744 704</b>
M20 x 1.5	3/4 " NPT	30	18.5	15	15.5	<b>CAP 744 964</b>
M25 x 1.5	3/4 " NPT	30	18.5	15	20.3	<b>CAP 744 974</b>
M25 x 1.5	1 " NPT	38	22.5	15	20.3	<b>CAP 745 234</b>
M32 x 1.5	1 " NPT	38	22.5	15	27.3	<b>CAP 745 244</b>
M32 x 1.5	1 " 1/4 NPT	48	22.5	15	27.3	<b>CAP 745 504</b>
M40 x 1.5	1 " 1/4 NPT	48	22.5	15	35.3	<b>CAP 745 514</b>
M40 x 1.5	1 " 1/2 NPT	52	22.5	15	35.3	<b>CAP 745 774</b>
M50 x 1.5	2 " NPT	64	22.5	16	45.2	<b>CAP 746 044</b>
M63 x 1.5	2 " NPT	67	22.5	17	53.6	<b>CAP 746 054</b>
M63 x 1.5	2 " 1/2 NPT	77	31	17	57.8	<b>CAP 746 314</b>
<b>Adapter NPT - ISO, CuZn gal. Ni</b>						
1/2 „ NPT	M20 x 1.5	23	18.5	16	15.0	<b>CAP 740 454</b>
1/2 „ NPT	M25 x 1.5	28	19.0	16	15.0	<b>CAP 740 714</b>
3/4 „ NPT	M25 x 1.5	28	19.0	16	20.1	<b>CAP 740 724</b>
3/4 „ NPT	M32 x 1.5	36	19.0	16	20.1	<b>CAP 740 984</b>
1 „ NPT	M32 x 1.5	36	19.0	20	26.0	<b>CAP 740 994</b>
1 „ NPT	M40 x 1.5	44	19.0	20	26.0	<b>CAP 741 254</b>
1 „ 1/4 NPT	M40 x 1.5	44	19.0	20	34.8	<b>CAP 741 264</b>
1 „ 1/4 NPT	M50 x 1.5	54	20.0	20	34.8	<b>CAP 741 524</b>
1 „ 1/2 NPT	M50 x 1.5	54	20.0	20	40.8	<b>CAP 741 534</b>
1 „ 1/2 NPT	M63 x 1.5	67	21.0	20	40.8	<b>CAP 741 794</b>
2 „ NPT	M63 x 1.5	67	21.0	20	52.4	<b>CAP 741 804</b>

Please use sealing washers (see page 2.3.28).

Dimension drawing

