



WALL TRUNKINGS

- made from plastic
- made from aluminium
- made from sheet steel

GGK is an owner managed German company. In alliance with the sister company WEST-CHEMIE, a manufacturer of PVC granulates, the production process starts with the manufacturing of raw material. Furthermore, **GGK** possesses both the technical process know-how in the extrusion of profiles and a unique innovative product

range. **GGK** has been established on the market of electrical installations for more than 25 years and is nowadays one of the leading European companies and a Specialist in terms of the manufacturing and the distribution of cable management systems made from PVC, halogen-free plastics, aluminium and sheet steel.



LFG / FB Installation trunking systems



BR / MBR Wall trunking systems



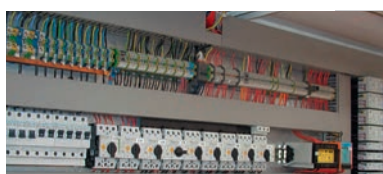
RS Installation pole systems



VVE Prewired units



SL Skirting trunking systems



VK Slotted cable trunking systems



Wide range of accessories

WALL TRUNKING SYSTEM – made from sheet steel

Purpose of the system and usage recommendation for the BRS wall trunking system:

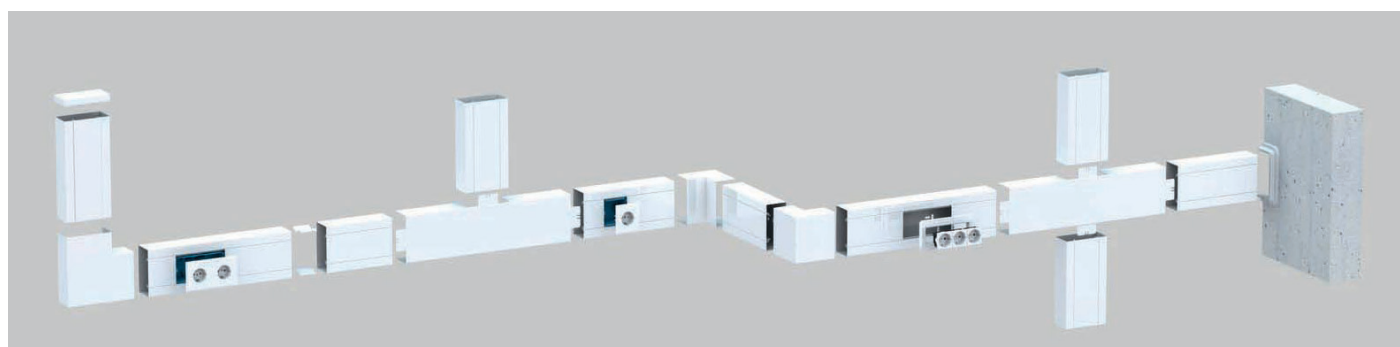
Workstation installations in offices, hotels and gastronomy, doctors' and lawyers' offices, workstations in industries with particularly high mechanical loads. Colour matching to the individual company CI-guidelines are possible.

Mounting properties and system accessories for the BRS wall trunking system (excerpt of product range):

Base and cover of the trunkings are 2m in length, the trunking base is two-rowed perforated for wall- and console-mounting. Trunking base and cover with self-grounded contact areas. Grounding straps for equipotential bonding (grounding cables must be ordered separately). Molded parts for rounding corners, flat angles, T- and cross pieces, end pieces, wall brackets are available. In combination with a wall connection blind a vertical installation (as an installation column) is possible. Colour: pure white (9010); hot-dip coated, other RAL colours on request.

Device installation / mounting options for the BRS wall trunking system:

Compatible with almost all commercially available switch ranges for flush-mounted installation using standard front-mounted accessory boxes (single and double), for the use of KSE prewired socket units (double and triple) and KSE/M45 adapter frames (double and triple) in combination with M45 device modules.



	Colour	Wiring ^A NYM J3x1,5 Ø 9,1mm	Wiring ^A CAT 7 (data) Ø 8,0mm	Wall trunking base	Wall trunking cover	Joint clip (also for grounding)	Inside corner -adjustable- (made from plastic)	Inside corner 90°	Outside corner -adjustable- (made from plastic)	Outside corner 90°
BRS wall trunking system (cover plate 80mm width)										
BRS 60x110/80 dimension: 62x110mm	white (9010)	12	14	11783 pack.: 4m	11719 pack.: 16m	2915 pack.: 20pc.	18360 pack.: 1 pc.	11744 pack.: 1pc.	18352 pack.: 1pc.	11786 pack.: 1pc.
BRS 60x130/80 dimension: 62x130mm	white (9010)	16	18	11726 pack.: 4m	11719 pack.: 16m	2915 pack.: 20pc.	18305 pack.: 1 pc.	12807 pack.: 1pc.	18304 pack.: 1pc.	12814 pack.: 1pc.
BRS 60x170/80 dimension: 62x170mm	white (9010)	24	29	11748 pack.: 4m	11719 pack.: 16m	2915 pack.: 20pc.	18364 pack.: 1 pc.	11796 pack.: 1pc.	18356 pack.: 1pc.	11799 pack.: 1pc.
BRS 60x200/80 dimension: 62x200mm	white (9010)	32	36	11655 pack.: 4m	11719 pack.: 16m	2915 pack.: 20pc.		12863 pack.: 1pc.		12865 pack.: 1pc.
BRS 80x110/80 dimension: 80x110mm	white (9010)	18	22	11752 pack.: 4m	11719 pack.: 16m	2947 pack.: 20pc.		11809 pack.: 1pc.		12575 pack.: 1pc.
BRS 80x130/80 dimension: 80x130mm	white (9010)	24	29	11756 pack.: 4m	11719 pack.: 16m	2947 pack.: 20pc.		12591 pack.: 1pc.		12593 pack.: 1pc.
BRS 80x170/80 dimension: 80x170mm	white (9010)	36	42	11760 pack.: 4m	11719 pack.: 16m	2947 pack.: 20pc.		12603 pack.: 1pc.		12605 pack.: 1pc.
BRS 80x200/80 dimension: 80x200mm	white (9010)	44	51	11659 pack.: 4m	11719 pack.: 16m	2947 pack.: 20pc.		12867 pack.: 1pc.		12869 pack.: 1pc.
BRS 100x110 dimension: 100x110mm	white (9010)	27	34	11764 pack.: 4m	11719 pack.: 16m	2958 pack.: 20pc.		12616 pack.: 1pc.		12618 pack.: 1pc.
BRS 100x130 dimension: 100x130mm	white (9010)	34	43	11768 pack.: 4m	11719 pack.: 16m	2958 pack.: 20pc.		12686 pack.: 1pc.		12688 pack.: 1pc.
BRS 100x170 dimension: 100x170mm	white (9010)	43	63	11779 pack.: 4m	11719 pack.: 16m	2958 pack.: 20pc.		12699 pack.: 1pc.		12701 pack.: 1pc.
BRS 100x200 dimension: 100x200mm	white (9010)	57	76	11651 pack.: 4m	11719 pack.: 16m	2958 pack.: 20pc.		12871 pack.: 1pc.		12873 pack.: 1pc.
BRS 120x120 Pult/asymmetrical dimension: 120x120mm	white (9010)	32	40	24000 pack.: 4m	11719 pack.: 16m	2898 pack.: 20pc.		24018 pack.: 1pc.		24021 pack.: 1pc.
BRS 120x120 Pult/symmetrical dimension: 120x120mm	white (9010)	30	38	24003 pack.: 4m	11719 pack.: 16m	2898 pack.: 20pc.		24006 pack.: 1pc.		24009 pack.: 1pc.
Micro-BRS wall trunking system (cover plate 45mm width)										
MBRS 60x90/45 dimension: 60x90mm	white (9010)	11	13	6861 pack.: 6m	6853 pack.: 20m			6845 pack.: 1pc.		6833 pack.: 1pc.
MBRS 80x80/45 Pult/symmetrical dimension: 80x80mm	white (9010)	9	11	6879 pack.: 6m	6853 pack.: 20m	6856 pack.: 20pc.		6871 pack.: 1pc.		

MICRO WALL TRUNKING SYSTEM – made from sheet steel

Purpose of the system and usage recommendation for the Micro-BRS wall trunking system:

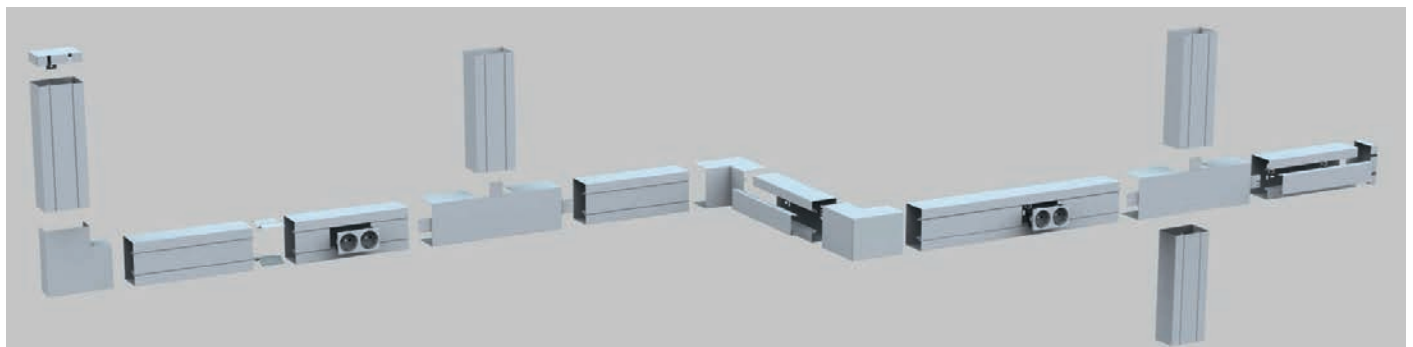
Workstation installation with minimum space requirement in offices, hotels and gastronomy, doctors' and lawyers' offices, workstations in industries with particularly high mechanical loads. Colour matching to the individual company CI-guidelines are possible.

Mounting properties and system accessories for the Micro-BRS wall trunking system (excerpt of product range):

Base and cover of the trunkings are 2m in length, the trunking base is perforated for wall- and console-mounting. Grounding straps for equipotential bonding (grounding cables must be ordered separately). Molded parts for rounding corners, flat angles, T- and cross pieces, end pieces, wall brackets are available. Colour: pure white (9010); hot-dip coated, other RAL colours on request.

Device installation / mounting options for the Micro-BRS wall trunking system:

For the direct M45 device installation (without accessory box) out of the extensive range of M45 devices. M45 Schuko sockets (single, double, triple), inclined (33°) or vertically aligned, data outlets, roller shutter rocker switch and further accessories in the dimension 45x45mm are available.



End piece (steel) overlapping on 3-sides	End piece (steel) overlapping on 4-sides	End piece (plastic) overlapping on 3-sides	End piece (plastic) overlapping on 4-sides	Vertical corner	T-piece	Cross piece	Separation plate	Wall connection blind (overlapping on 3-sides)	Wall connection blind (overlapping on 4-sides)	Grounding strip with cable connections, 300mm length
12771 pack.: 10pc.	11788 pack.: 10pc.	12733 pack.: 10pc.	12763 pack.: 10 pc.	11790 pack.: 1pc.	11792 pack.: 1pc.	11794 pack.: 1pc.	11714 pack.: 40m	18700 pack.: 1pc.	18704 pack.: 1pc.	1640 pack.: 50pc.
12778 pack.: 10pc.	12817 pack.: 10pc.	11722 pack.: 10pc.	18410 pack.: 10 pc.	12819 pack.: 1pc.	12822 pack.: 1pc.	12824 pack.: 1pc.	11714 pack.: 40m	18708 pack.: 1pc.	18712 pack.: 1pc.	1640 pack.: 50pc.
12782 pack.: 10pc.	11801 pack.: 10pc.	18042 pack.: 10pc.	18043 pack.: 10 pc.	11803 pack.: 1pc.	11805 pack.: 1pc.	11807 pack.: 1pc.	11714 pack.: 40m	18716 pack.: 1pc.	18720 pack.: 1pc.	1640 pack.: 50pc.
12898 pack.: 10pc.	11816 pack.: 10pc.			12875 pack.: 1pc.	12881 pack.: 1pc.	12892 pack.: 1pc.	11714 pack.: 40m			1640 pack.: 50pc.
12577 pack.: 10pc.	12828 pack.: 10pc.			12579 pack.: 1pc.	12581 pack.: 1pc.	12589 pack.: 1pc.	11715 pack.: 40m			1640 pack.: 50pc.
12595 pack.: 10pc.	12830 pack.: 10pc.			12597 pack.: 1pc.	12599 pack.: 1pc.	12601 pack.: 1pc.	11715 pack.: 40m			1640 pack.: 50pc.
12607 pack.: 10pc.	12832 pack.: 10pc.			12609 pack.: 1pc.	12611 pack.: 1pc.	12613 pack.: 1pc.	11715 pack.: 40m			1640 pack.: 50pc.
12900 pack.: 10pc.	12901 pack.: 10pc.			12877 pack.: 1pc.	12888 pack.: 1pc.	12864 pack.: 1pc.	11715 pack.: 40m			1640 pack.: 50pc.
12622 pack.: 10pc.	12847 pack.: 10pc.			12626 pack.: 1pc.	12682 pack.: 1pc.	12684 pack.: 1pc.	11713 pack.: 40m			1640 pack.: 50pc.
12690 pack.: 10pc.	12849 pack.: 10pc.			12692 pack.: 1pc.	12694 pack.: 1pc.	12696 pack.: 1pc.	11713 pack.: 40m			1640 pack.: 50pc.
12703 pack.: 10pc.	12851 pack.: 10pc.			12705 pack.: 1pc.	12712 pack.: 1pc.	12715 pack.: 1pc.	11713 pack.: 40m			1640 pack.: 50pc.
12860 pack.: 10pc.	12859 pack.: 10pc.			12879 pack.: 1pc.	12890 pack.: 1pc.	12896 pack.: 1pc.	11713 pack.: 40m			1640 pack.: 50pc.
24024¹ pack.: 1pc.	24027² pack.: 1pc.									1640 pack.: 50pc.
24012 pack.: 1pc.										1640 pack.: 50pc.

¹ end cap left · ² end cap right

6837 pack.: 1pc.		6841 pack.: 1pc.	6857 pack.: 1pc.	6849 pack.: 1pc.						1640 pack.: 50pc.
6875 pack.: 1pc.										1640 pack.: 50pc.

ACCESSORIES (selected)

Separation plates

for BR, MBR, BRA, MBRA, BRS wall trunkings

	Description	Art. no
	Separation plate TREN60 extra, PVC, for BR and BRA wall trunkings, for middle division, 60mm height	1456 pack.: 50m
	Separation plate TREN60, PVC, for MBR and MBRA wall trunkings, for 60mm height	1260 pack.: 100m

	Description	Art. no
	Separation plate TRENNS, made from sheet steel for BRS wall trunkings, 60mm height, 80mm height, 100mm height	11714 11715 11713 pack.: 40m

Accessory boxes

for BR, BRA and BRS wall trunkings (with 80mm cover)

	Description	Art. no
	GDXP accessory box, single hole, front-mounted, 47mm, for standard 80mm devices, for BR, BRA and BRS wall trunkings	3677 pack.: 40pc.
	GED 50 accessory box, single hole, floor-mounted, 50mm, for standard 80mm devices, for BR and BRA wall trunkings	1261 pack.: 40pc.
	Mounting holder 50, for data outlets, single hole, floor-mounted, for standard 80mm devices, for BR and BRA wall trunkings, ¹ with divider frame / ² without divider frame	3203¹ 3204² pack.: 1pc.

	Description	Art. no
	GDXP2 accessory box, double hole, front-mounted, 47mm, for standard 80mm devices, for BR, BRA and BRS wall trunkings	3678 pack.: 20pc.
	GED 50/2 accessory box, double hole, floor-mounted, 50mm, for standard 80mm devices, for BR and BRA wall trunkings	1280 pack.: 20pc.

Prewired socket units

for BR, BRA and BRS wall trunkings (with 80mm cover)

	Description	Art. no
	KSE-P/Dialog-2 prewired socket unit, double Schuko, 80mm, colour: white, incl. label field, for BR, BRA and BRS wall trunkings, front-mounted	36782 pack.: 4pc.
	KSE 50/Dialog-2 prewired socket unit, double Schuko, 80mm, colour: white, incl. label field, for BR and BRA wall trunkings, floor-mounted	21280 pack.: 4pc.

	Description	Art. no
	KSE-P/Dialog-3 prewired socket unit, triple Schuko, 80mm, colour: white, incl. label field, for BR, BRA and BRS wall trunkings, front-mounted	36783 pack.: 4pc.
	KSE 50/Dialog-3 prewired socket unit, triple Schuko, 80mm, colour: white, incl. label field, for BR and BRA wall trunkings, floor-mounted	31280 pack.: 4pc.

M45 Adapter frames

for BR, BRA and BRS wall trunkings (with 80mm cover), Device installation: see page 10

	Description	Art. no
	M45 adapter frame, double, empty, mountable with M45 devices (see page 10), colour: white, front-mounted, for BR, BRA and BRS wall trunkings, incl. label field; for horizontal installation	4658 pack.: 1pc.
	M45 adapter frame, double, empty, mountable with M45 devices (see page 10), colour: white, front-mounted, for BR, BRA and BRS wall trunkings, incl. label field; for vertical installation	4664 pack.: 1 pc.

	Description	Art. no
	M45 adapter frame, triple, empty, mountable with M45 devices (see page 10), colour: white, front-mounted, for BR, BRA and BRS wall trunkings, incl. label field; for horizontal installation	4661 pack.: 1pc.
	M45 adapter frame, triple, empty, mountable with M45 devices (see page 10), colour: white, front-mounted, for BR, BRA and BRS wall trunkings, incl. label field; for vertical installation	4667 pack.: 1pc.



- Leading specialist in plastic and metal cable management systems
- Owner managed, group-independent company
- Modern production plant
- Environmentally friendly, resource-efficient production
- Own, innovative product development



- High product availability from stock
- Wide variety of national and international certificates
- Certification according to ISO 9001:2008 
- High quality products „Made in Germany“
- Over 25 years of experience



GGK GmbH & Co. KG

Gerhard-Grün-Str. 1
35753 Greifenstein-Beilstein
Germany

Phone: +49 (0) 2779 / 915-0

Fax +49 (0) 2779 / 915-122

e-mail: export@ggk-online.com

Internet: www.ggk-online.com