

IP 66 floor boxes - 4 modules

for raised or concrete floors



Heavy duty in-screed floor box

for concrete floors



0 880 60



0 880 64 equipped with Mosaic mechanisms



0 880 61 equipped with Mosaic mechanisms



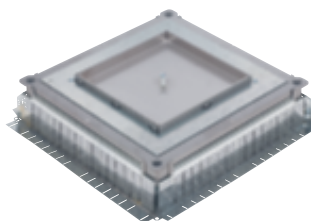
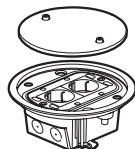
0 880 69



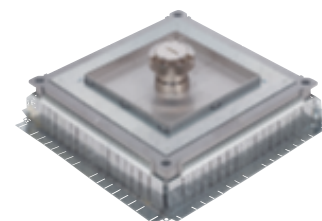
Technical characteristics see **e-catalogue**

Conform to EN 60-670-1 and EN 60 670-23 standards
IP 66 (when lid is closed) / IP 55 (with cable exit accessory
Cat.No 0 880 62)
IK 09

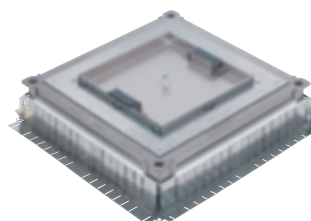
Pack	Cat.Nos	IP 66 floor boxes - 4 modules
1	0 880 60	Supplied with lid and 4-module support frame for Mosaic Programme or Arteor mechanisms To be installed in flush-mounting backbox Cat.No 0 800 69 or directly in raised floor With removable lid Can be equipped with cable exit accessory Cat.No 0 880 62 Brass finish Stainless steel finish
1	0 880 61	
1	0 880 63	With hinged lid Compatible with angled plugs only Can be equipped with key lock on request Brass finish Stainless steel finish
1	0 880 64	
1	0 880 69	Backbox Auto-adjustable backbox for installing IP 66 floor boxes in concrete floors Supplied with cover Accepts conduits Ø16, 20, 25 mm Minimum screed height: 65 mm
1	0 880 62	Cable exit Compatible with angled plugs only IP 55 cable exit accessory



0 896 34 + 0 896 83 + 0 896 85



0 896 34 + 0 896 83 + 0 896 86 + 0 896 87



0 896 34 + 0 896 83 + 0 896 88

For highly frequented areas, requiring important mechanical resistance and/or washing down
Conform to standard EN 60-670 and EN 50 085-2-2

Pack	Cat.Nos	Adjustable metal backbox for concrete floor
1	0 896 34	Universal backbox For junction of LV and ELV cabling and/or installation of floor boxes: - 75-105 mm adjustable height floor boxes (p. 805) - 65 mm "reduced height" floor boxes (p. 805) - heavy duty floor boxes (p. 808) Height adjustable from 56 mm to 140 mm using 4 screws located in the box corners and a tool adapting to electric drill or screwdriver: Bendable side walls for joining with different sizes of floor ducts Supplied with worksite protection cover to be replaced by blanking cover plate or mounting cover plate Universal metal in-screed backbox
1	0 896 83	Accessories for metal in-screed floor box Normal load support Up to 8 KN load with deflection < 6 mm
1	0 896 84	Heavy load support Up to 20 KN load with deflection < 3 mm
6	0 896 39	Set of 2 conduit adaptors for metal cavity floor box Cat.No 0 896 34
1	0 896 85	Plates for metal in-screed floor boxes For metal in-screed floor box Cat.No 0 896 34 Use support Cat.No 0 896 83 or 0 896 84 Height adjustment of the backbox from 105 mm to 140 mm All types of floors IP 66 plain cover (cover closed) Access trap for junction, no cable exit
1	0 896 86	Marbled and tiled floors IP 66 plate (cover closed and plugs not connected) with central cable exit To receive 24 mosaic modules Supplied with all necessary wiring accessories supports
1	0 896 87	Accessory for plate with central cable exit Cable exit accessory for IP 66 cover plate Cat.No 0 896 86
1	0 896 88	Wooden floors IP 30 plate with 2 lateral cable exits To receive 24 mosaic modules Supplied with all necessary wiring accessories supports