

# BODENSTECKDOSE SINGLE-OUTLET

# BODO

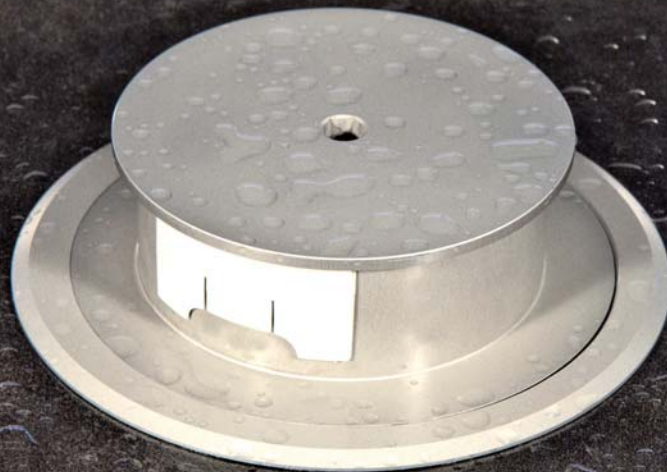
GEPRÜFT UND ZERTIFIZIERT NACH DIN EN 50085 | TESTED AND CERTIFIED ACC. TO DIN EN 50085

**IP22**



**tropfwassergeschützt**  
*dripping water protected*

**IP43**



**sprühwassergeschützt**  
*splashed water protected*

**IP66**



**strahlwassergeschützt**  
*jet water protected*

**Schutzartbezeichnung**  
*Degree of Protection*

**IP XX**

Code Buchstaben (International Protection)  
Code letter (International Protection)

1. Kennziffer (Berührungs- und Fremdkörperchutz)  
First index figure (foreign bodies protection)

2. Kennziffer (Schutz des Gehäuses gegen Eindringen von Wasser)  
Second index figure (water protection)

**UNTERFLURSYSTEM**.com  
*UNDERFLOOR SYSTEM*

## BODENSTECKDOSE SINGLE-OUTLET

geprüft und zertifiziert nach DIN EN 50085 | tested and certified acc. to Din EN 50085



**IP22**  
tropfwassergeschützt  
dripping water protected



**IP43**  
sprühwassergeschützt  
splashed water protected



**IP66**  
strahlwassergeschützt  
jet water protected

### Schutzartbezeichnung Degree of Protection

Code Buchstaben (International Protection)  
Code letter (International Protection)

1. Kennziffer (Berührungs- und Fremdkörperschutz)  
First index figure (foreign bodies protection)

2. Kennziffer (Schutz des Gehäuses gegen Eindringen von Wasser)  
Second index figure (water protection)

IP XX

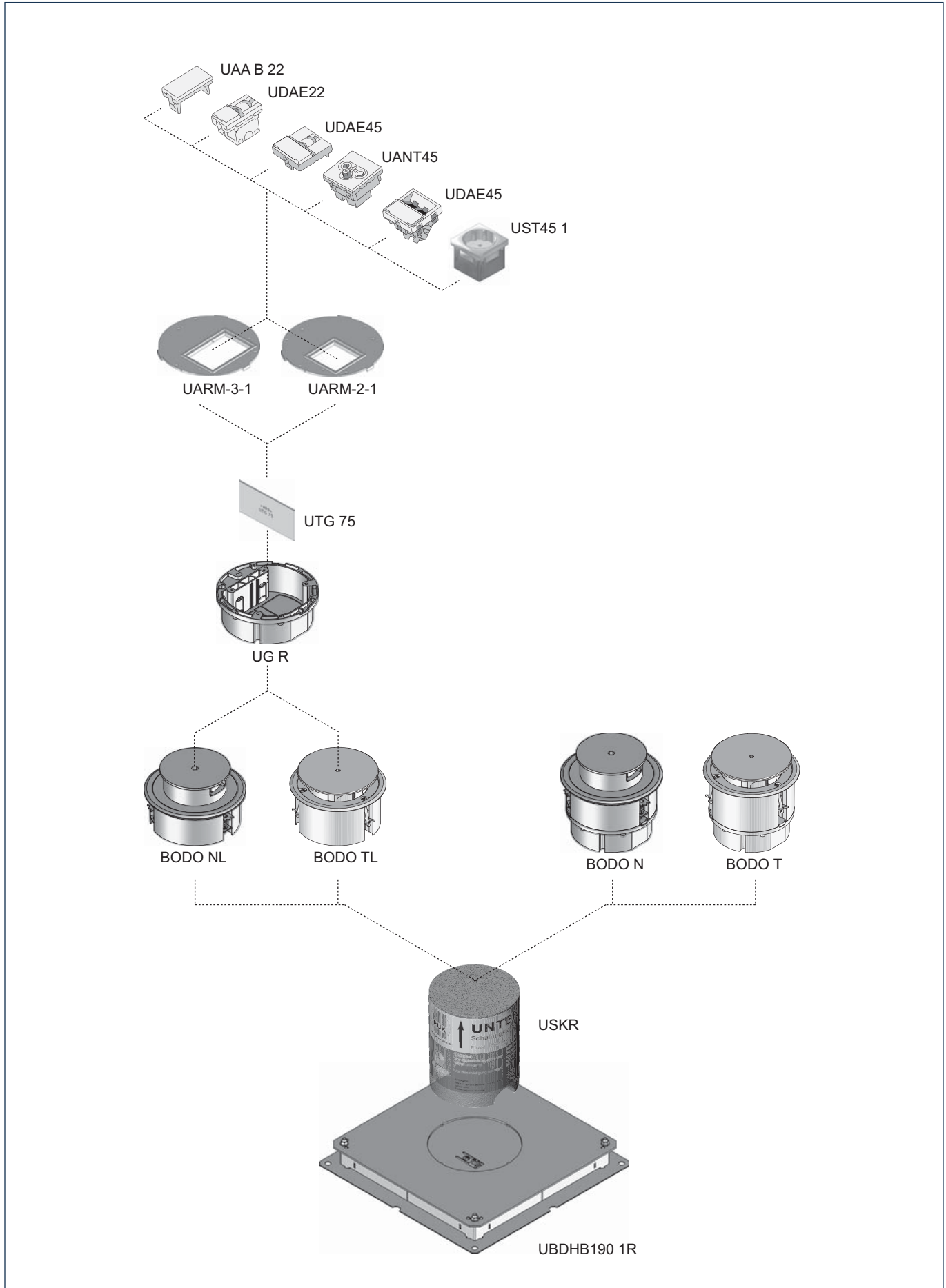
# SINGLE-OUTLET BODO

## WET- AND DRY-MAINTAINED

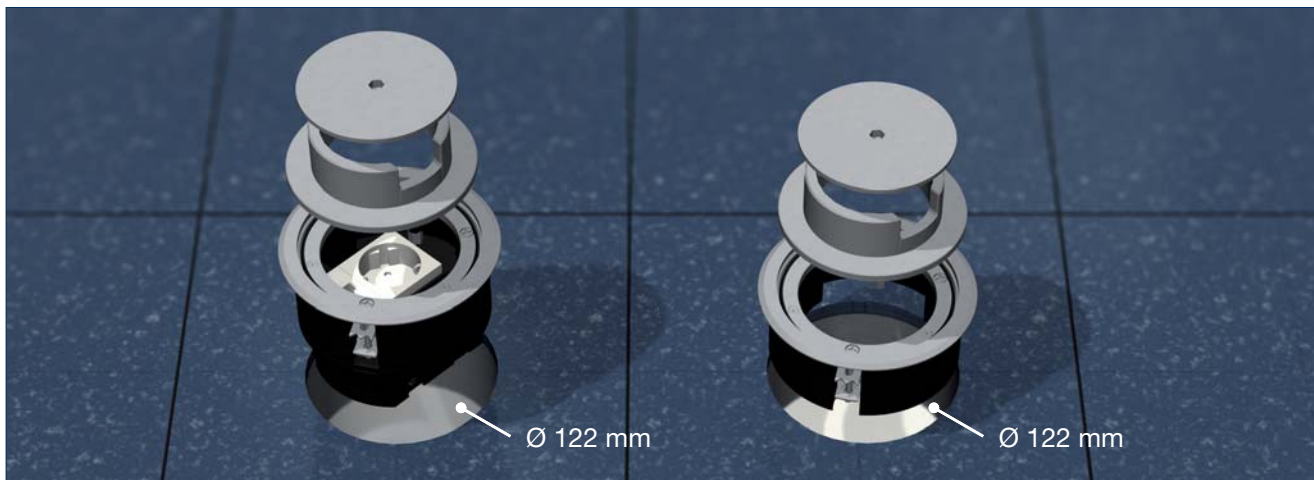


# EXPLODED VIEW

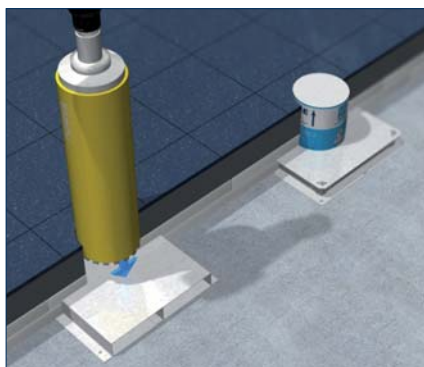
SINGLE-OUTLET, ROUND – WET- AND DRY-MAINTAINED



**Instructions for installation – installation units for screed and hollow floors**  
**Single outlet BODO, wet maintenance floors**

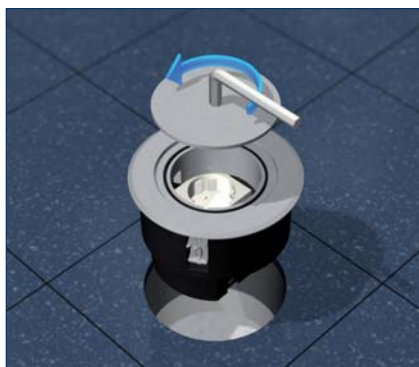


Round single-outlet with protection frame made of aluminium with an outside diameter of 133 mm, equipped with an isolated ground receptacle and a RJ45 data box or as revision opening. For installation in screed floor or false floor.



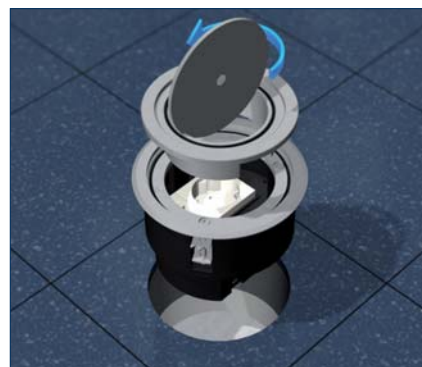
**Screed / false floor**

Create a floor opening in the screed or raised floor using a core cutter or through the use of hollow space floor box with shuttering unit.



**Cover lid**

Open lid by means of Allen screw counter-clockwise.



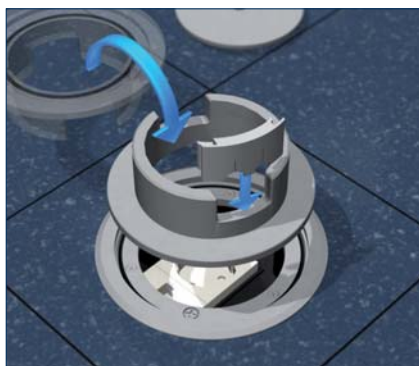
**Remove tube**

Put the lid into the grooving of the tube receptacle and thus unscrew the tube receptacle.



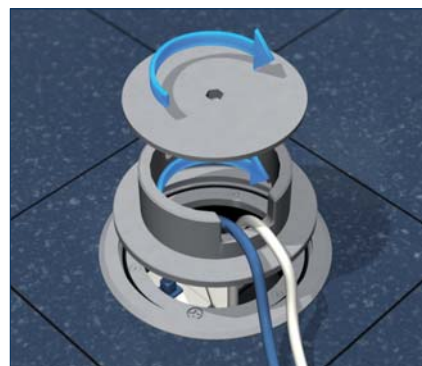
**Attach the frame and insert the strain relief**

Protection frame have to seal accordingly when used in wet-maintained floors. Insert strain relief from below into the opening and secure the cable. Tighten the claws by means of cross-head screws.



**Tube insert**

Bring single-outlet from closed to open state by swivelling the tube insert by 180°. Insert the rubber sleeve for a dust-proof sealing.

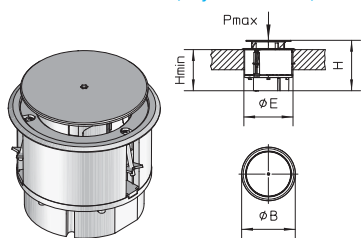


**Equipment**

Insert plug and lead cables through the cable outlet. Tightly screw together tube insert and tube lid.

**BODO T**

single outlet with bottom outlet, dry maintenance, round



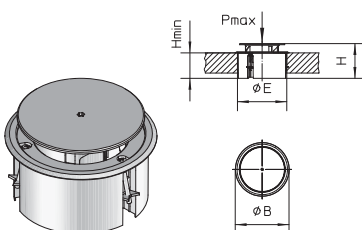
Article ID	H mm	Hmin mm	B mm	E mm	Pmax kN	C	G kg	PL 2010 €/pc	
<b>BODO T-S</b>	126	102	133	122	2	RAL 9011	0,40	85,60	
<b>BODO T-G</b>	126	102	133	122	2	RAL 7011	0,40	85,60	

inclusive: 1 x UAA-B 22 cover, blind  
 1 x UST45-W 1 socket, single  
 1 x UARM-3-1 118 cover plate  
 1 x UG-R device installation cup, round

optional: UWZ-TS40 torx key

**BODO TL**

single outlet, dry maintenance, round, empty

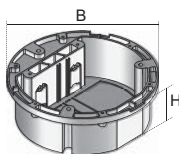


Article ID	H mm	Hmin mm	B mm	E mm	Pmax kN	C	G kg	PL 2010 €/pc	
<b>BODO TL-S</b>	87	63	133	122	2	RAL 9011	0,20	33,40	
<b>BODO TL-G</b>	87	63	133	122	2	RAL 7011	0,20	33,40	

optional: UG R device installation cup, round  
 UTG 75 device separation plate  
 UARM-3-1 cover plate  
 UARM-2-1 cover plate  
 UWZ-TS40 torx key

**UG R**

Device installation cup, round



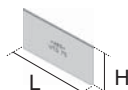
Article ID	H mm	B mm	C	G kg	PL 2010 €/pc	
<b>UG-R</b>	39	118	RAL 9011	0,05	6,70	

inclusive: 2 x UGZ-R strain relief  
 2 x BLS 2,9x32 tapping screw

optional: UTG 75 device separation plate

**UTG 75**

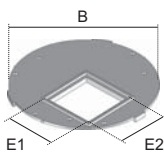
Device separation plate



Article ID	H mm	L mm	C	G kg	PL 2010 €/pc	
<b>UTG 75</b>	36	75	RAL 9011	0,01	1,35	

**UARM-2-1**

Cover plate for 2x UDAE22

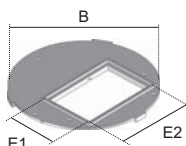


Article ID	B mm	E1 mm	E2 mm	C	G kg	PL 2010 €/pc	
<b>UARM-2-1 118</b>	114	40,5	40,5	RAL 9011	0,03	1,95	

optional: UST45 1 socket, single  
 UDAE22 data systems installation device single

**UARM-3-1**

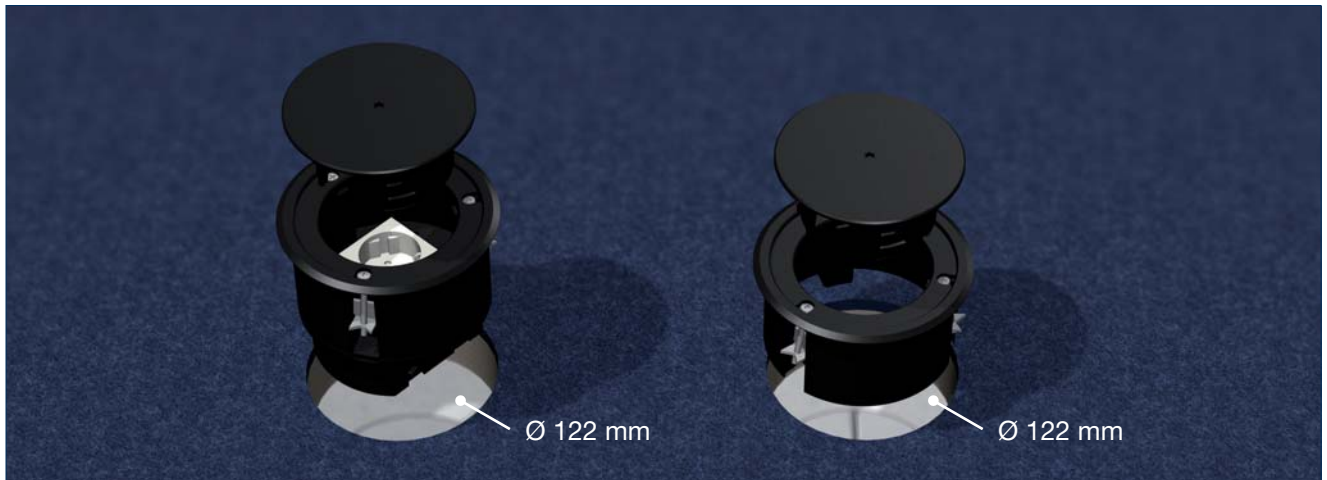
Cover plate for 3x UDAE22



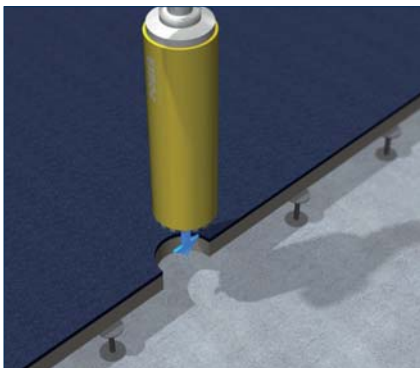
Article ID	B mm	E1 mm	E2 mm	C	G kg	PL 2010 €/pc	
<b>UARM-3-1 118</b>	114	40,5	63	RAL 9011	0,02	1,90	

optional: UST45 1 socket, single  
 UDAE22 data systems installation device single

Instructions for installation – installation units for screed and hollow floors  
Single outlet BODO, dry maintenance floors



Round single outlet with protection frame made of plastic, external diameter 113 mm, equipped with one isolated ground receptacle or as inspection chamber. For installation into raised or hollow floors.



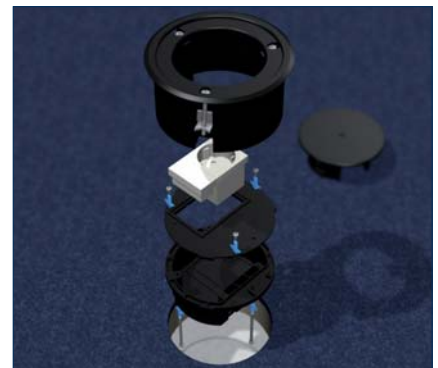
**Raised / hollow floors**

Provide a floor opening in the raised floor with a drill bit.



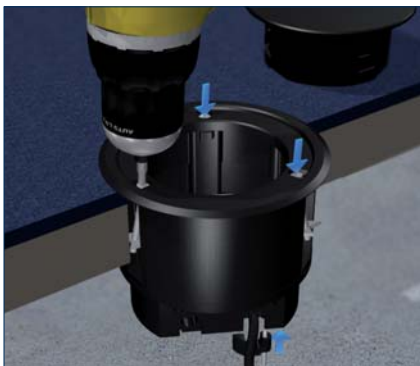
**Cable outlet lid**

Open cable outlet lid with a torx wrench counter clockwise, pull out to open.



**Assembly of receptacle**

In order to connect, disassemble the pre-converted single outlet, insert cable and connect to receptacle. Then assemble cover plate, receptacle and device cup.



**Fasten strain relief and frame**

Insert the strain relieves from below and secure cable. Tighten claws with Phillips head screws.



**Cable outlet**

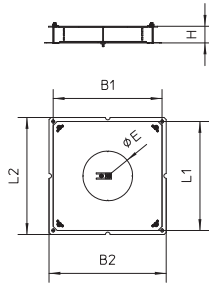
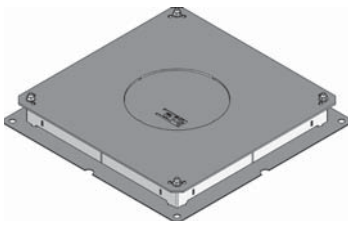
Place plug and insert cable outlet lid counter clockwise with bayonet locking device.



**Equipment**

Lead the cable from an angular or straight plug through the cable outlet.

**UBDHB190 1R**  
hollow space floor box single, round



Article ID	H mm	B1 mm	B2 mm	L1 mm	L2 mm	E mm	G kg	PL 2010 €/pc	
<b>UBDHB190 28-122R</b>	31	270	290	270	290	123	1,6	73,35	<b>S</b>
<b>UBDHB190 38-122R</b>	41	270	290	270	290	123	1,7	73,95	
<b>UBDHB190 48-122R</b>	51	270	290	270	290	123	1,8	74,55	

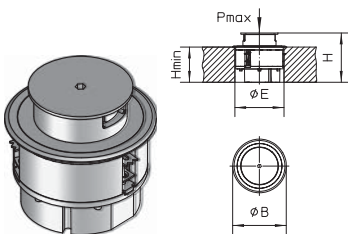
optional: USKR shuttering unit, round  
UN nail plug


**USK R**  
shuttering unit round



Article ID	H mm	D mm	G kg	PL 2010 €/pc	
<b>USK 120R-150</b>	150	122	0,42	6,24	<b>STY</b>

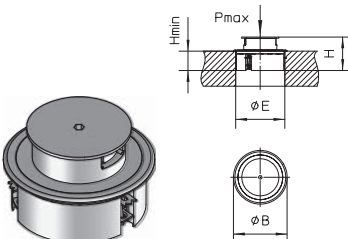
**BODO N**  
single outlet with bottom outlet, wet maintenance, round




Article ID	H mm	Hmin mm	B mm	E mm	Pmax kN	G kg	PL 2010 €/pc	
<b>BODO N</b>	122	87	133	122	15	0,74	298,00	<b>AL</b>

inclusive: 1 x UET80-R-WD tube cable outlet  
1 x UETD80-R-WD tube cover  
1 x UDAE22-CAT6 8 data systems installation device single  
1 x UST45-W 1 socket, single  
1 x UTG 75 device separation plate  
1 x UARM-3-1 118 cover plate  
1 x UG-R device installation cup, round  
1 x UWZ-IS 8 allen key  
2 x UGM1-3 sleeve

**BODO NL**  
single outlet, wet maintenance, round, empty



Article ID	H mm	Hmin mm	B mm	E mm	Pmax kN	G kg	PL 2010 €/pc	
<b>BODO NL</b>	83	48	133	122	15	0,48	243,00	<b>AL</b>

optional: UG R device installation cup, round  
UTG 75 device separation plate  
UARM-3-1 cover plate  
UARM-2-1 cover plate  
UGM sleeve