



Connection Solutions
4Workplaces

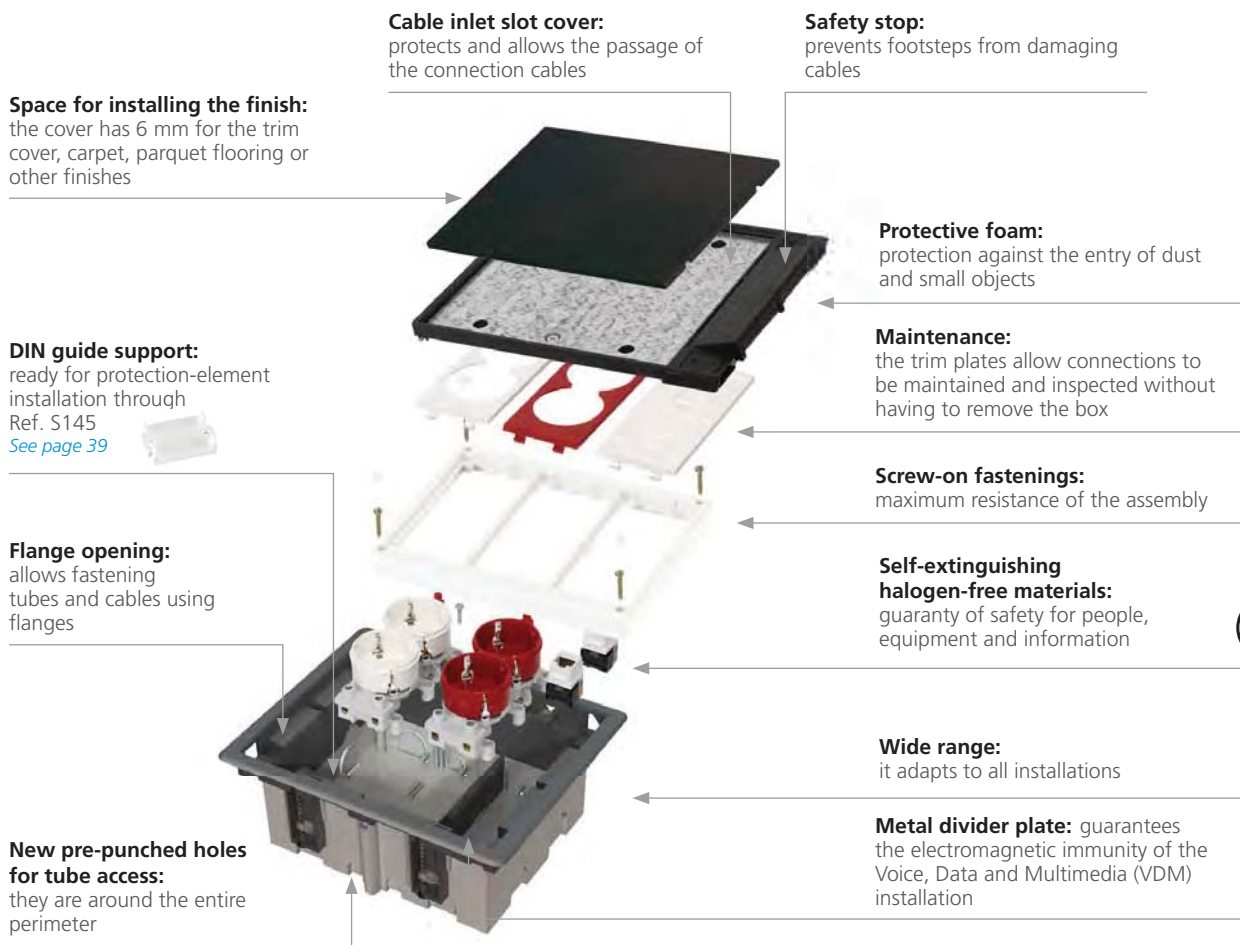
simon
connect

**general
catalogue**
2011 - 2012



CIMA FLOOR BOXES

Solutions for raised or tile floors



✓ **New pre-punched holes for tube intakes:**



Two new tube intake measurements of Ø 20 mm and Ø 26 mm.

✓ **Adjustable mechanism-protecting tray**

They are supplied in 2 different depths:

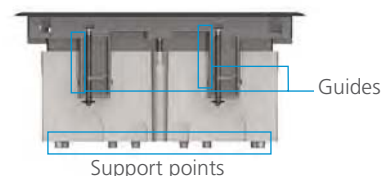


Paving
70 mm adjustable to 100 mm



Raised floor
90 mm adjustable to 120 mm

✓ **Greater stability**



The new tray ensures greater stability in an installation thanks to the the new support points and levelling guides.



Connection of elbow and straight clips, as well as chargers for mobile phones, PDAs, etc.

Maximum connection space



Blends in fully with the surroundings.

Perfect finishes.



Maximum safety

Protected opening system. The box can only be opened by pulling both opening clips at the same time.



The CIMA range evolves towards the future. It can include two **quick-connection** connectors for raised floor installations. Refs. SF410 and SF610

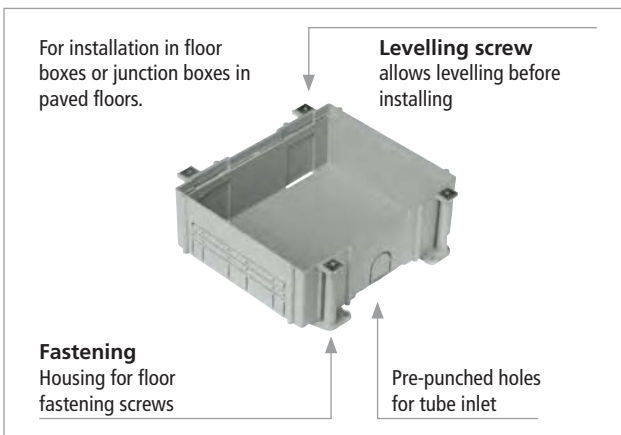
Quick-connection system on page 138



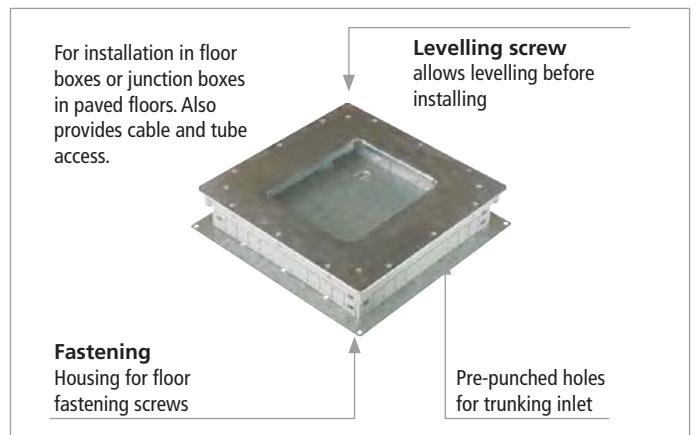
Fastening clips

No junction box is required for installing floor boxes in raised floors. The floor box attaches to the flagstone by means of metal, self-positioning **fastening clips**.

ADJUSTABLE PLASTIC GROUND TRAY



ADJUSTABLE METAL GROUND TRAY



With all necessary materials

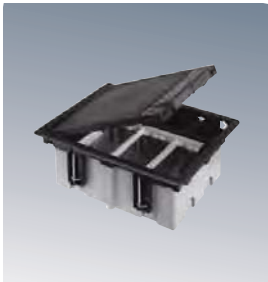
Complete CIMA floor boxes are supplied with metal divider plate, mechanism-holder frame, connection cable with earth connection and all necessary hardware for installation.

Mechanisms, electrical sockets and plates from page 36



COMPLETE FLOOR BOXES - INCLUDE MECHANISM-HOLDER FRAME

Installation in raised flooring - depth adjustable from 90 mm to 120 mm



Complete floor box	Flush-mount trim cover
	
SF110 /1 /14 1 CIMA dual module SF210 /1 /14 2 CIMA dual modules SF310 /1 /14 3 CIMA dual modules SF410 /1 /14 4 CIMA dual modules SF610 /1 /14 6 CIMA dual modules	0 Optional S105 /1 /14 1 CIMA dual module S205 /1 /14 2 CIMA dual modules S305 /1 /14 3 CIMA dual modules S405 /1 /14 4 CIMA dual modules S605 /1 /14 6 CIMA dual modules

Spare parts

Hinged cover

RSF001 /1 /14 1 module RSF002 /1 /14 2 modules RSF003 /1 /14 3 modules RSF004 /1 /14 4 modules RSF006 /1 /14 6 modules

KITS



CIMA 3-module floor box kit, without cables
XSS0322 /14
 For paved floor requires G33 or G300. Trim cover not included.



CIMA 3-module floor Box Kit with cables
KITS370 /14
 For paved floor requires G33 or G300. Trim cover not included.

Built-in mechanism-holder frame

Mechanisms, electrical sockets and plates from page 36



CIMA floor boxes include the mechanism-holder frame incorporated in /9.

Frame also available in /14

SM102 /14	1 CIMA module.
SM202 /14	2 CIMA modules
SM302 /14	3 CIMA modules
SM402 /14	4 CIMA modules

Configuration example



	Quantity	Ref./Finish	Description
Covering	1	SF410/14	4-module complete CIMA floor box, graphite
	1	SM402/14	CIMA 4 module mechanism-holder frame, graphite
Electrical sockets and plates	1	S195AS/14	CIMA plate with 16A bipolar circuit-breaker, graphite
	1	S145	DIN guide adapter
	1	S1/6/14	Two-coloured CIMA double Schuko with pilot light, red/graphite
	1	S1/14	CIMA double Schuko with pilot light, graphite
	1	S80B96U/14	CIMA angled voice and data plate with 2 RJ45 Cat. 6 UTP connectors, graphite

Grey
Ral 7011

Pure white
Ral 9010

Graphite grey
Ral 7021

/1

/9

/14

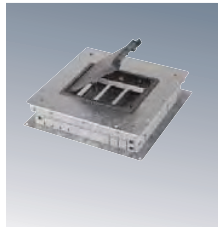
COMPLETE FLOOR BOXES - INCLUDE MECHANISM-HOLDER FRAME

Paved floor installation - depth adjustable from 70 mm to 100 mm
With plastic tray (Final connection)



Plastic tray		Complete floor box		Flush-mount trim cover		0 Optional
G11	1 CIMA dual module	SF170	/1 /14 1 CIMA dual module	S105	/1 /14 1 CIMA dual module	
G22	2 CIMA dual modules	SF270	/1 /14 2 Cima dual modules	S205	/1 /14 2 Cima dual modules	
G33	3 Cima dual modules	SF370	/1 /14 3 Cima dual modules	S305	/1 /14 3 Cima dual modules	
G44	4 Cima dual modules	SF470	/1 /14 4 Cima dual modules	S405	/1 /14 4 Cima dual modules	
G66	6 Cima dual modules	SF670	/1 /14 6 Cima dual modules	S605	/1 /14 6 Cima dual modules	

With metallic tray (For junctions)



Metal tray		Complete floor box		Flush-mount trim cover		0 Optional
G300	3 Cima dual modules	SF370	/1 /14 3 Cima dual modules	S305	/1 /14 3 Cima dual modules	
G400*	4 Cima dual modules	SF470	/1 /14 4 Cima dual modules	S405	/1 /14 4 Cima dual modules	
G600*	6 Cima dual modules	SF670	/1 /14 6 Cima dual modules	S605	/1 /14 6 Cima dual modules	

* Conversion plate on page 463

Spare parts

Hinged cover		RSF001	RSF002	RSF003	RSF004	RSF006
		/1 /14	/1 /14	/1 /14	/1 /14	/1 /14
	1 module		2 modules	3 modules	4 modules	6 modules

A plastic or metal tray must be used for ground installation

Use of the plastic tray:

All the space in the tray is filled with the floor box. The cables enter through a corrugated pipe.

Use of the metal tray:

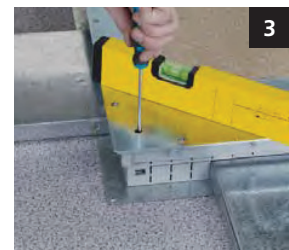
A space must be left between the floor box and the tray to allow the entry of cables or pipes. The cable inlet is through floor trunking.



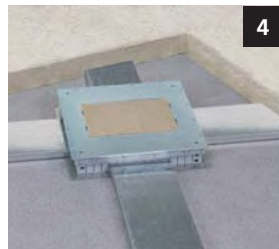
1 Cut the trunking inlets



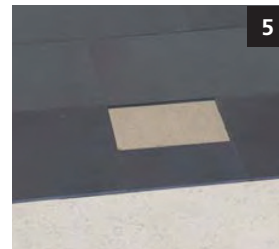
2 Insert the trunking and screw to the floor



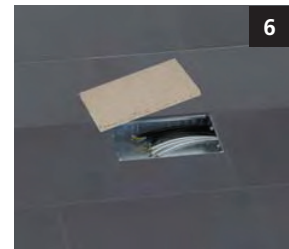
3 Level with the screws



4 Cement



5 Fit the trim



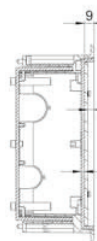
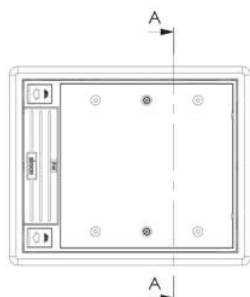
6 Remove the protective cover

Technical details
See page 151

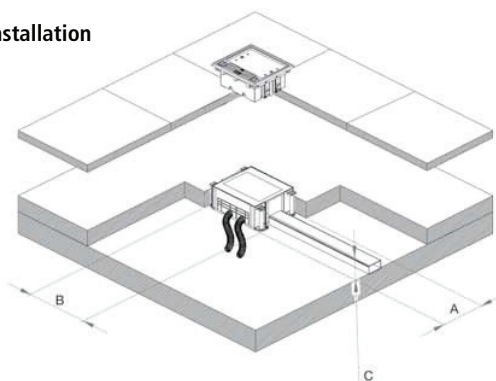
Technical information

CIMA FLOOR BOXES

Boxes



Ground installation



References	No. of modules	Tray plastic AxB	Depth X	Pre-punched hole No.	Load maximum	Adjustment Z Min.	Adjustment Z Max.
SF170/..	1	220x172.2	Adjustable from 76 to 100	2 Ø 26 + 2 Ø 20 + 2 Ø 12.5	400	14	54
SF270/..	2	220x172.2		4 Ø 26 + 4 Ø 20	600	14	54
SF370/..	3	220x227		2 Ø 26 + 2 Ø 20 8 + 8 Ø 12.5	800	14	54
SF470/..	4	220x286.5		4 Ø 26 + 4 Ø 20 + 4 Ø 12.5	900	14	54
12 at Ø14	6	239x312		4 Ø 26 + 4 Ø 20 + 8 Ø 12.5	1000	14	54

Box opening

1 Module



2 Modules



3 Modules



4 Modules



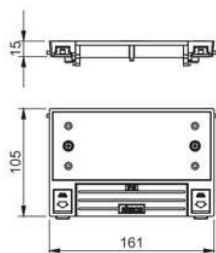
6 Modules



Spare parts

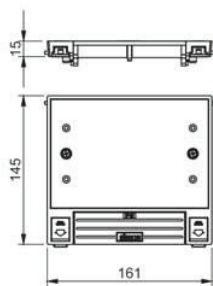
1 Module

Ref. RSF001/..



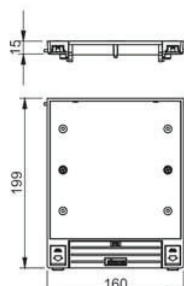
2 Modules

Ref. RSF002/..



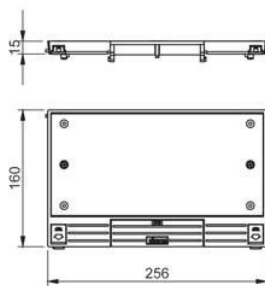
3 Modules

Ref. RSF003/..



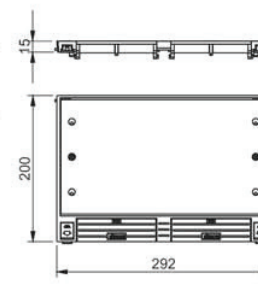
4 Modules

Ref. RSF004/..



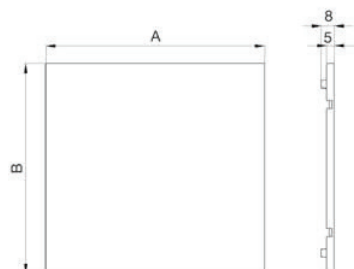
6 Modules

Ref. RSF006/..



Flush-mount cover

Dimensions for carpet or parquet trim

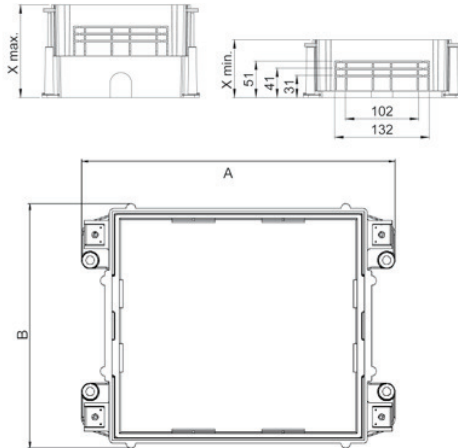


References	No. of modules	Measurements A	Measurements B
S105	1	154	66
S205	2	154	107
S305	3	154	160
S405	4	118	247
S605	6	282	156

Measurements in mm

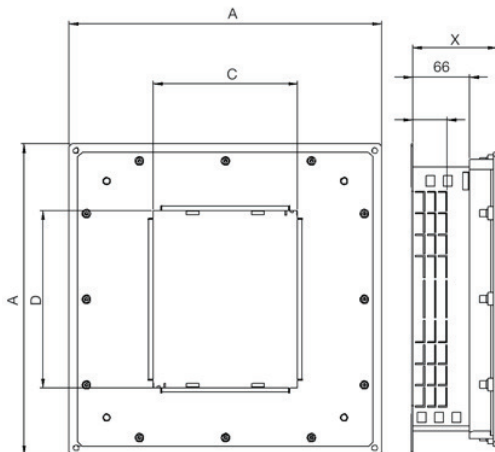
CIMA JUNCTION BOXES

- Product designed according to the Safety Requirements of Directive 2006/95/EC (Low Voltage) through standard UNE-EN-60.670.
- CE marked product.
- IP protection level: 20
- The recommended temperature range during installation is: - 5°C to + 60°C.
- The maximum temperature during construction work is + 90°C.

Plastic tray for paving floor


References	No. of modules	Measurements of the opening in the junction box AxB	Depth X	Pre-punched hole no. Tube inlet	Trunking inlet
G11	1	220x172.2	Adjustable from 80 to 110*	4 at Ø 30	From 100x20 to 130x40
G22	2	220x172.2		4 at Ø 30	
G33	3	220x227	Adjustable from 80 to 130*	4 at Ø 30	
G44	4	220x286.5		8 at Ø 30	
G66	6	259x312	Adjust. 80-110*	8 at Ø 30	

*Include floor trim

Metal tray for paved floor


References	No. of modules	Space measurements of the junction box AxA	Measurements of the opening of the trim CxD	Depth X	Trunking inlet
G300/..	3	363x363	168x206	Adjustable from 75 to 90	From 100x30 to 270x40
G400/..	4	363x363	168x264		From 100x30 to 270x40
G600/..	6	463x463	207x300		From 100x30 to 350x40

Measurements in mm



CIMA FLOOR BOXES SHALLOW

The perfect solution for shallow flooring



Offices



Meeting rooms



Auditoriums



Museums



Libraries



Universities

Trim:

For a perfect finish (optional).

Cover:

Can be customised with the floor covering (carpet, parquet, etc.) With 3 opening positions and 2 separate cable trunking rubbers.

Versatile pre-punched holes:

The mechanism holders have punched holes for 20 mm and 25 mm tubes and a space for inserting Voice and Data patch cords.

Mechanism holder:

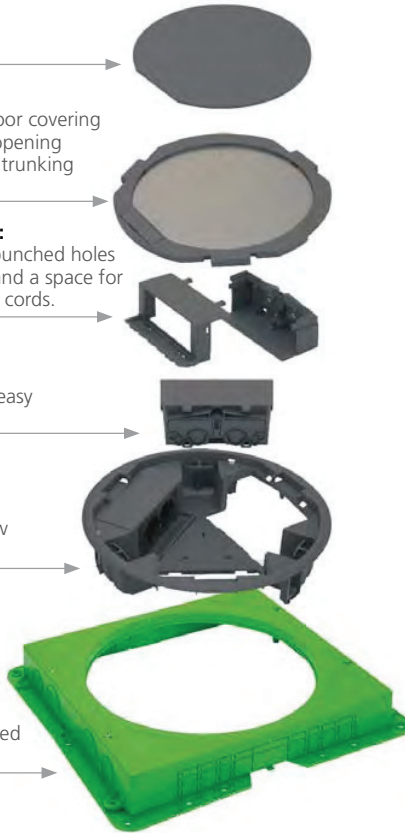
Plug&Play mechanism holder modules that allow quick and easy installation.

Shallow:

The perfect solution for shallow flooring.

Paving tray:

For installations in paving. Not required for installations in raised floors.



Integration into any space

The angled mechanisms allow the cover to be closed while the box is connected, hiding the connections.



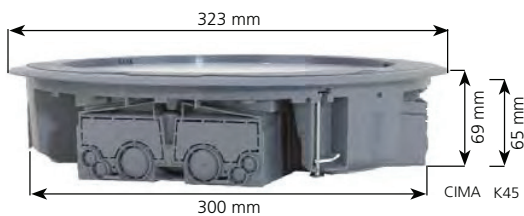
Compatible with superior voice and data categories.

Due to the vertical position of the mechanisms and to the input pre-punched holes, the Voice, Data and Multimedia patch cords do not need to be bent.



Shallow

The ideal solution for shallow floors, whether paved or raised.

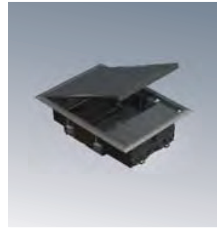


CIMA SF300C/1 Format
K45 KF300C/1 Format

Adaptable to changes in the office

2 separate cable outlets and the option to fit the cover allow it to be adapted to different furnishings.
(Refs. SF300C/1 and KF300C/1)



CIMA FLOOR BOXES, SHALLOW

Floor box


- SF200 /1** Square for 2 CIMA dual modules
- KF200 /1** Square for 4 K45 mechanisms and 2 K45 half mechanisms

Trim cover
0
Optional

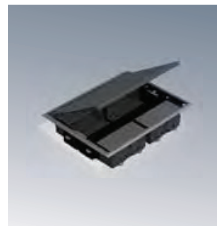

- S215 /1**


Floor box


- SF300C /1** Circular for 3 CIMA dual modules
- KF300C /1** Circular for 6 K45 mechanisms and 3 K45 half mechanisms

Trim cover
0
Optional


- S315C /1**


Floor box


- SF400 /1** Square for 4 CIMA dual modules
- KF400 /1** Square for 8 K45 mechanisms and 4 K45 half mechanisms

Trim cover
0
Optional


- S415 /1**

Trays for paving

G201
For references
SF200/1 and KF200/1

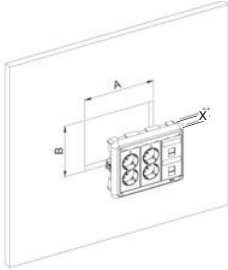
G301C
For references
SF300C/1 and KF300C/1

G401
For references
SF400/1 and KF400/1

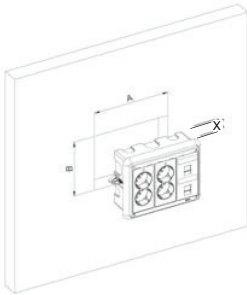
i Configuration example - Paving installation


	Quantity	Ref./Finish	Description
Covering	1	SF300C/1	CIMA Circular floor box for 3 CIMA dual modules, grey
	1	S315C/1	Trim cover for CIMA circular Floor Box, grey
	1	G301C	Paving tray for CIMA circular Floor Box.
Electrical sockets and plates	1	S1/14	CIMA double Schuko with pilot light, graphite
	1	S1/6/14	CIMA double Schuko with pilot light, red-graphite
	1	S96BU/14	CIMA flat voice and data plate with 2 RJ45 Cat. 6 UTP connectors, graphite

Technical details
See page 149

CIMA WALL FLUSH-MOUNT
33 mm wall installation


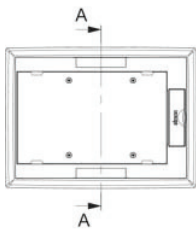
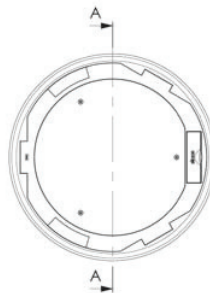
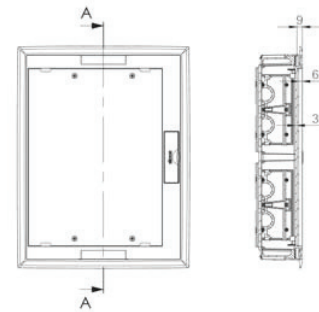
References	No. of modules	Measurements of space AxB	Depth X
SM150/..	1	88x135	33
SM250/..	2	128x135	33
SM350/..	3	183x135	33
SM450/..	4	239x135	33

60 mm wall installation


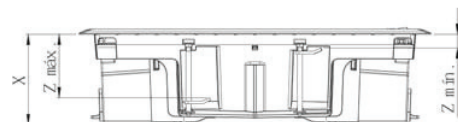
References	No. of modules	Measurements of space AxB	Depth X
SM160/..	1	83x135	60
SM260/..	2	123x135	60
SM360/..	3	178x135	60
SM460/..	4	235x135	60
SM660/..	6	346x135	60

CIMA FLOOR BOXES SHALLOW

- Product designed according to the Safety Requirements of Directive 2006/95/EC (Low Voltage) through standard UNE-EN-60.670.
- C€ marked product.
- IP protection level: 4x.
- Impact resistance IK:08.
- The recommended temperature range during installation is: - 5°C to + 60°C.
- <g id="12820">The maximum temperature during construction work </g>is + 90°C. (Installed with junction box)

Boxes
2 Modules

3 Modules

4 Modules


References	No. of modules	Measurements X	No. of pre-punched hole x module	Measurements Z
SF200/..	2	69	2 at Ø 10	11 to 48
SF300C/..	3		2 at Ø 20	
SF400/..	4		2 at 55x20	
KF200/..	2	64	3 at Ø 10	11 to 48
KF300C/..	3		2 at Ø 20	
KF400/..	4		2 at 22x34	

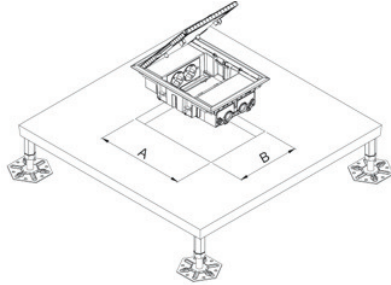


Measurements in mm

Technical information

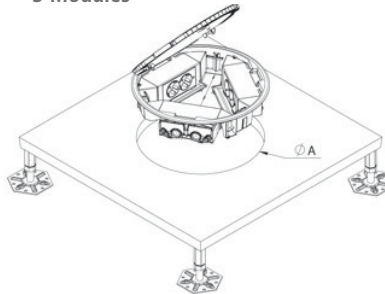
CIMA FLOOR BOXES SHALLOW

Raised-floor installation 2 Modules



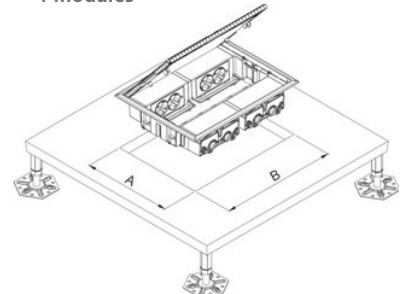
References	Measurements AxB
SF200/1	250x178
KF200/1	250x178

3 Modules



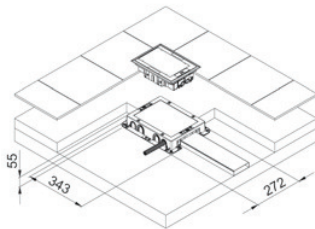
References	Diameter A
SF300/1	300
KF300/1	300

4 Modules

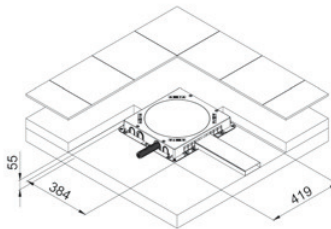


References	Measurements AxB
SF400/1	250x327
KF400/1	250x327

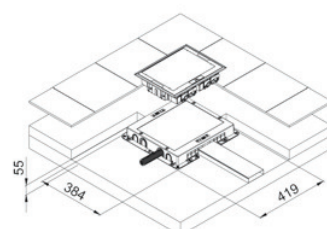
Ground installation 2 Modules



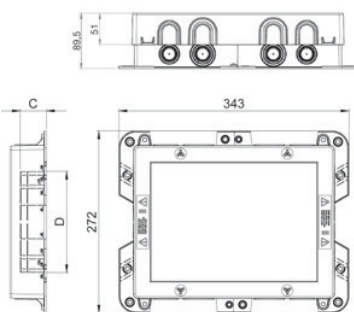
3 Modules



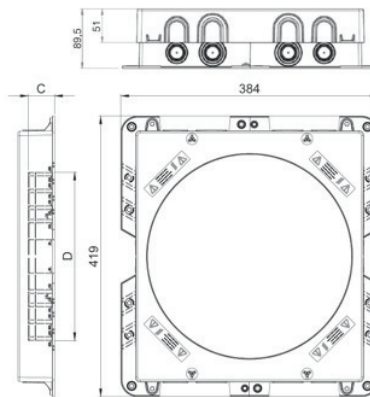
4 Modules



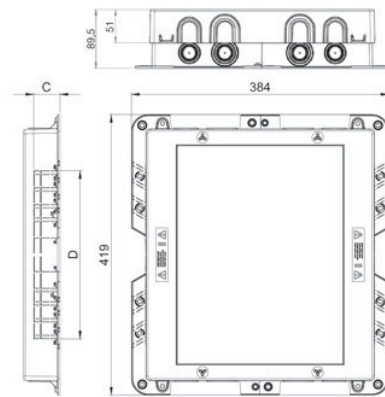
Paved Floor Trays 2 Modules



3 Modules



4 Modules



References	No. of modules	Measurements of the opening in the junction box	Depth X	Pre-punched hole no. Tube inlet	Trunking inlet CxD
G201	2	272x343	54.5 to 90**	8 at Ø 20 8 at Ø 25 8 at Ø 32 4 at Ø 40	50
G301C	3				100
G401	4				110
					140
					150
					*190
					*200
					*240
					*250
					x28
					x38

* Only for G301C and G401
** Not including floor trim

Measurements in mm