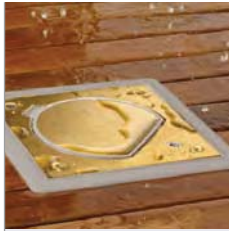




Connection Solutions
4Workplaces

simon
connect

**general
catalogue**
2011 - 2012



IP 66 WATERTIGHT FLOOR BOXES

Occasional connection is often required **in open outdoor areas** When closed, the IP66 protection level keeps water and moisture away from the electrical mechanisms.

Can be installed in:



Shopping centres



Conference halls



Hotels



Home



Gardens



Health centres



Sports centres



Museums



Terraces

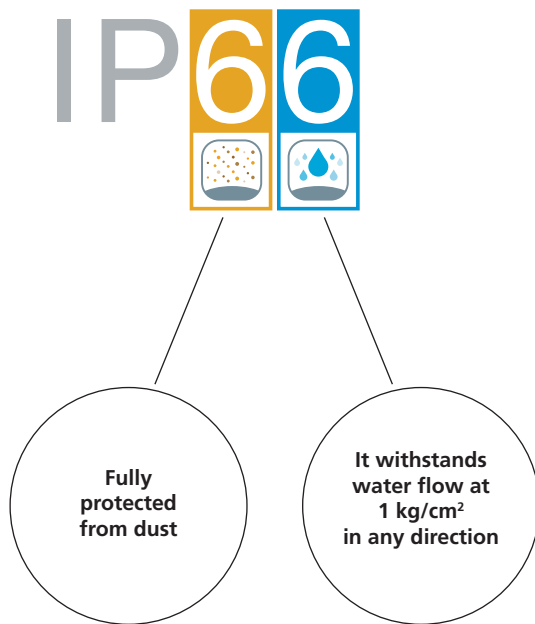


Airports



DIRECT
SNAP-FIT

IP66 protection level



Combine with Simon 44 AQUA

See page 205 from Simon General Catalogue 2010/2011



A tray for each kind of floor

Raised floor



Paving



WATERTIGHT BOX FOR RAISED FLOOR



For ground installation in **gardens and terraces, wooden decking, parquet flooring or raised flooring.**



The **bevelled tray** secures the box and hides any installation defects.

Installation via **fastening clips** that anchor the box.



WATERTIGHT BOX FOR PAVING

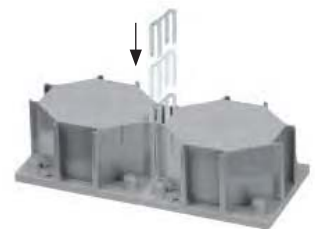


Allows flush installation of the box in **all types of paving (porcelain tile, terrazzo, ceramic, etc.).**



Grouping of watertight boxes

The boxes can be grouped together to provide more than one connection point.



A mechanism holder for each environment



Safety lock
Suitable for areas with **public access**

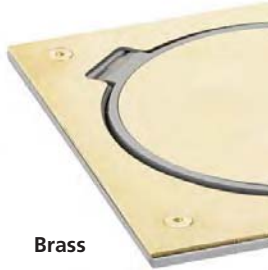


Manual lock
Suitable for less demanding environments

IP 66 WATERTIGHT FLOOR BOXES - CHARACTERISTICS

Reinforced cover

New cover design with greater reinforcement to withstand side impacts.



Brass



Stainless Steel

Maximum resistance

When connected, it can withstand the weight of pedestrians while protecting the cable from pressure and stress.



Safety cover

The **hinge, which opens to less than 90°**, prevents the cover from being left open accidentally causing people to trip over it.



Electricity, Voice and Data in a single box

The **KSE16U/23** mechanism holder incorporates a Schuko electrical connection and an RJ45, Cat. 6 UTP.



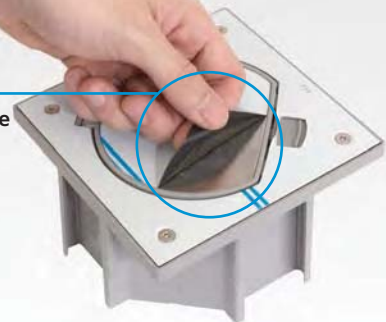
Installation system

An optional drainage pipe can be installed to drain away any possible condensation inside the box. The tray includes a wooden cover that prevents any dirt from getting inside it during installation.

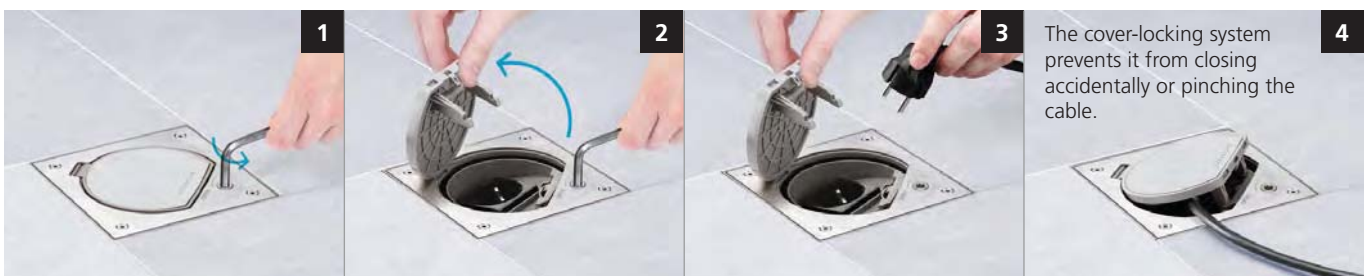


Protective film

Includes **protective film** to avoid the box surface being soiled or damaged during installation.



Safety lock, opening and closing system



The cover-locking system prevents it from closing accidentally or pinching the cable.

Grey
Ral 7036

Brass

Stainless
Steel

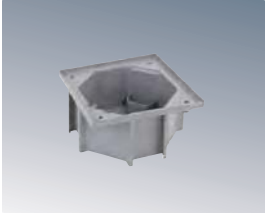
/23

/71

/72

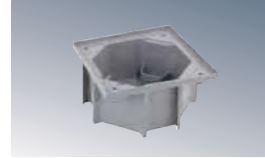
TRAYS

Installation in raised flooring



KGE170TF /23

Flush-mount tray for watertight floor box in **raised floor**, grey colour



Solid floor installation

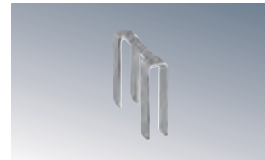
KGE170 /23

Flush-mount tray for watertight floor box in **paved floor**, grey colour



ACSE

Connector accessory for 2 watertight floor boxes for paved floor



COMMON MECHANISM HOLDER FOR BOTH TRAYS

Mechanism holder with safety lock



Stainless steel /72

Brass /71

KSE1SEC/23 /72 /71

With a Schuko socket

KSE0SEC/23 /72 /71

For a K45 mechanism

KSE15USEC/23 /72 /71

With a Schuko socket and 1 RJ45 connector, Cat. 5e UTP



Spare parts



RKS001 /72 /71

Watertight Box Cover



RKS003

Watertight seal Square



RKS004

Watertight seal Circular

Mechanism holder with manual lock



Stainless steel /72

Brass /71

KSE15U/23 /72 /71

With a Schuko socket and 1 RJ45 connector, Cat. 5e UTP

KSE1/23 /72 /71

With a Schuko socket

KSE0/23 /72 /71

For a K45 mechanism

KSE16U/23 /72 /71

With a Schuko socket and 1 RJ45 connector, Cat. 6 UTP



i Paved floor configuration example

Tray for paved floor



KGE170/23



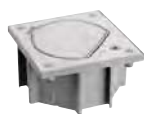
Mechanism holder with safety lock



KSE1SEC/23 /72



Watertight floor box assembly



Watertight floor box with safety lock and Schuko socket Stainless-steel finish

i Raised floor configuration example

Tray for raised floor



KGE170TF/23



Mechanism holder



KSE15U/23 /71



Watertight floor box assembly



Watertight floor box for raised floor with 1 Schuko socket and 1 RJ45 connector Cat. 5e UTP. Brass finish

K45 IP 66 WATERTIGHT FLOOR BOXES

- Product designed according the Safety Requirements of Directive 2006/95/EC (Low Voltage) through compliance with harmonised standard UNE-EN-60.670.
- C€ marked product.
- The recommended temperature range during installation is: -25°C to + 60°C.
- The maximum temperature during construction work is + 90°C.

CLOSED BOX

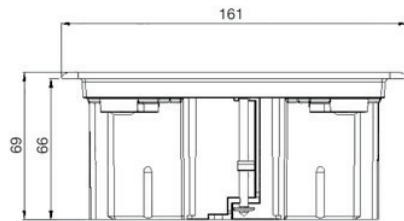
- IP66 protection level.
- Impact protection level IK07 (with IP66).
- Maximum load per unit of area: 12 kg/cm².
- Total maximum load: 1000 Kg.

OPEN BOX

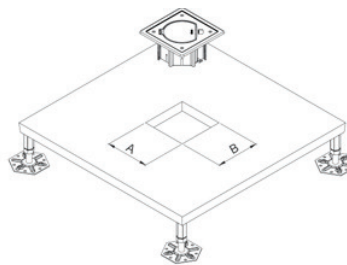
- IP20 protection level .
- Impact protection level IK0.
- Maximum load per unit of area: 4 kg/cm².
- Total maximum load: 100 Kg.

Raised floor tray

Ref. [KGE170TF/23](#)



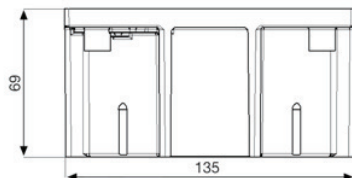
Raised floor installation



Dimensions AxB
145X145

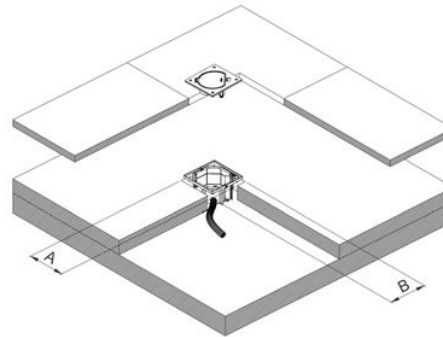
Paved Floor Tray

Ref. [KGE170/23](#)



Safety lock: Allen key 6mm.

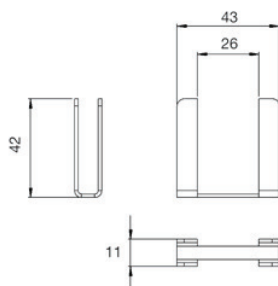
Paved floor installation



Dimensions AxB
135X135

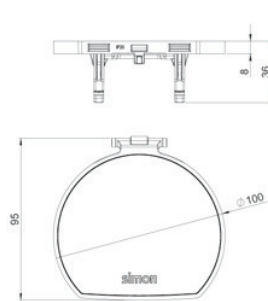
Connecting accessory

Ref. [ACSE](#)

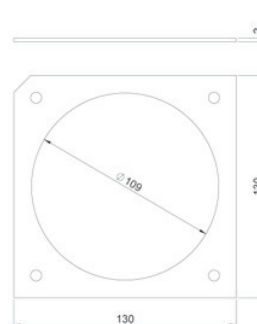


Spare parts

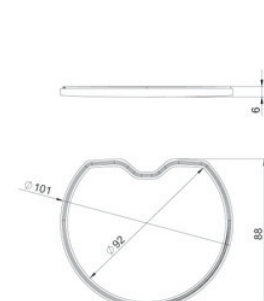
Ref. [RKS001/..](#)



Ref. [RKS003](#)



Ref. [RKS004](#)



Measurements in mm