

K45 OFIBLOCK PLUS



5 Installation options

- Desktop
- Under desk
- Raised floor
- Wall mounted
- Mounted on screens or furniture
- Metal surface with magnet



With all necessary materials

Each K45 OFIBLOCK PLUS is supplied with its section, inner frames, screws and nuts, cut-out metal divider, 2 earth connections and 2 blind plates.

Mechanisms, electrical sockets and plates from page 72



Side entries with K45 plates



< Plates with connector

Quick connection.
Connectors and Patch cords on page 140

K19/14
< Tube inlet >



K19/14
< Gland >



TC250/0
< Cable organiser



K121A/14
K121B/14
< Quick Connection



K21/14
< 20x30 mini-trunking input
Mini-trunking on page 92



K18/14
< Quick Connection



K305A/14
< Quick Connection



K20/14
< Cable inlet



K10/14
< Quick Connection



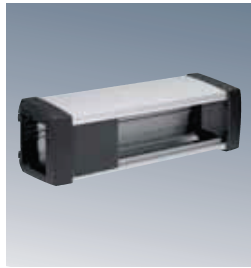
Transparent Graphite grey Pure white

/0

/14

/9

K45 OFIBLOCK PLUS (MODULAR ENTRY NOT INCLUDED)



KFP103 /14 3 usable K45 mechanisms

KFP104 /14 4 usable K45 mechanisms

KFP105 /14 5 usable K45 mechanisms

KFP106 /14 6 usable K45 mechanisms

KFP107 /14 7 usable K45 mechanisms

KFP108 /14 8 usable K45 mechanisms

Modular K45 entry plates



K19 /14
Tube or gland
Ø 22 mm
[+ information page 87](#)



K305A /14
Quick connection
CEI320 connector
[+ information page 86](#)



K20 /14
Cable input
2 cables of Ø 13 mm
and 4 of Ø 6 mm
[+ information page 87](#)



K21 /14
Mini-trunking
20x30 mm
[+ information page 87](#)



K10 /14
Cable input
Trunking
[+ information page 87](#)

K45 OFIBLOCK fastening mounts



KSF1
Individual or under
table



KSF2
Tandem under raised
floor



KSF3
Desktop



KSF5
Anchor on DIN guide



KSF6
Support with magnet
Requires 2 per OFIBLOCK
(Check availability)

Installation accessories



K105B/..
Multimedia Plates
3 RCA audio and
video connectors
[+ information page 83](#)



KTL8 /14
Electrical patch cord
[+ information page 142](#)



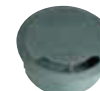
S600/1
Access to raised floor
Accessible cover
[+ information page 20](#)



K106A/..
Protection
K45 circuit-breaker
[+ information page 76](#)



TC250 /0
Organiser
[+ information page 116](#)



TS10 /14
Access to raised floor
Trunking
[+ information page 20](#)

Configuration example



	Quantity	Ref./Finish	Description
Enclosure	1	KFP103/14	K45 OFIBLOCK PLUS with 3 usable mechanisms, graphite
Electrical sockets and plates	1	K20/14	K45 cable input plate with retainer included, graphite
	1	KB96U/14	K45 flat V&D plate with 2 Cat. 6 UTP connectors, graphite
	2	K11/14	K45 electrical socket, Schuko, quick terminal connection, graphite
	1	AC11	Connection block for multi-sockets
	1	KSF3	OFIBLOCK mount for securing to desk
	1	TC250/0	Ø 25 mm, 2 m long cable organiser

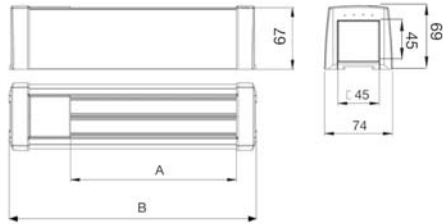
Technical details
[See page 165](#)

K45 OFIBLOCK PLUS

- Product designed according to the Safety Requirements of Directive 2006/95/EC (Low Voltage) through standard UNE-EN-60.670.
- CE marked product.
- IP protection level: 4x.

- The recommended temperature range during installation is: - 5°C to + 60°C.
- The maximum temperature during construction work is + 60°C.
- Manufactured in Anodised Aluminium.

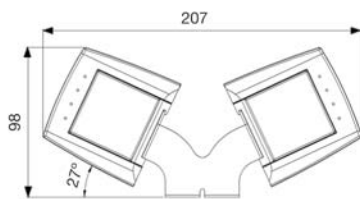
OFIBLOCK PLUS



References	No. of K45 modules	Dimensions	
		A	B
KFP103/..	3	135	220
KFP104/..	4	180	265
KFP105/..	5	225	310
KFP106/..	6	270	355
KFP107/..	7	315	400
KFP108/..	8	360	446

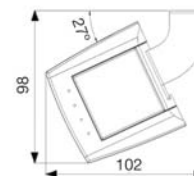
Support on raised floor (tandem configuration)

Ref. KSF2



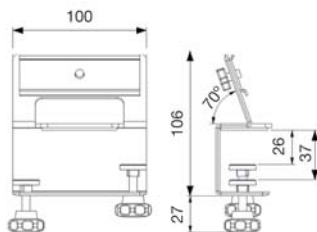
Single support under desk

Ref. KSF1



Desktop support

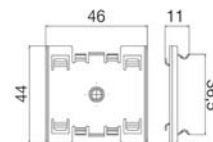
Ref. KSF3



Quick connection and cable outlet plate information on page xxx

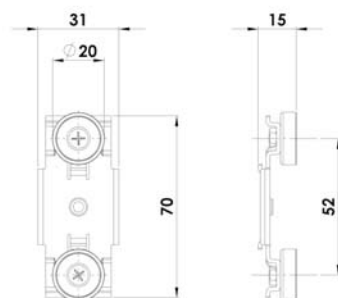
Fastening on DIN guide

Ref. KSF5



Support with magnet

Ref. KSF6



Ø	Height	Weight	Force
20 mm	6 mm	12.5 gr	9 kg

Type of magnet: Neodymium