



Connection Solutions
4Workplaces

simon
connect

**general
catalogue**
2011 - 2012

Installation systems in furniture



Direct snap-fit



Offices



Auditoriums



Meeting rooms



Educational establishments



Hotels



Homes

SIMPLY COMPACT

SEVERAL LATERAL ENTRIES

- Quick-connect
- Direct cable

SHARES ACCESSORIES WITH OFIBLOCK PLUS

- Desk top
- Under desk
- Raised floor
- Wall or screen
- Metal surface with magnet
- DIN rail

CAN BE INSTALLED IN RAISED FLOOR

Installation of sockets with **indicator light** under the floor to easily locate connection points.

Ideal for shallow raised floor.



SUPPLIED WITH ALL NECESSARY MATERIAL

Each K45 Ofiblock Compact is supplied with aluminium profile, lateral blind cover, lateral direct cable entry cover, fasteners and front blind plate to facilitate internal wiring distribution.



Mechanisms, electrical sockets and plates from page 126

CAN BE COMBINED WITH QUICK-CONNECT SYSTEMS

Option of lateral covers for quick-connect entries.



Quick and easy installation through direct snap-fitting of K45 solutions.



OFIBLOCK COMPACT*

ART. NO.	DESCRIPTION
KFC102 /9 /14	For 2 wide K45 mechanisms
KFC103 /9 /14	For 3 wide K45 mechanisms
KFC104 /9 /14	For 4 wide K45 mechanisms
KFC105 /9 /14	For 5 wide K45 mechanisms
KFC106 /9 /14	For 6 wide K45 mechanisms
KFC107 /9 /14	For 7 wide K45 mechanisms
KFC108 /9 /14	For 8 wide K45 mechanisms
KFC109 /9 /14	For 9 wide K45 mechanisms
KFC110 /9 /14	For 10 wide K45 mechanisms

*Includes lateral cover for direct cable inlet

MODULAR ENTRY COVERS

ART. NO.	DESCRIPTION
ACFC01 /24	Lateral blind cover

ART. NO.	DESCRIPTION
ACFC02 /24	Direct cabling input lateral cover

ART. NO.	DESCRIPTION
ACFC03 /24	Individual quick-connect entry lateral cover

ART. NO.	DESCRIPTION
ACFC04 /24	Double quick-connect entry lateral cover

FASTENING BRACKETS FOR OFIBLOCK

ART. NO.	DESCRIPTION
KSF1	Individual or under desk

ART. NO.	DESCRIPTION
KSF2	Tandem under raised floor



K45 OFIBLOCK LINE

Functional design



- With the new K45 OFIBLOCK LINE, connections are perfectly integrated within the furnishings and are accessible for use.
- Easy integration**

Rear cable inputs to facilitate installation in any furnishing space from 10 mm thick.

Valid for all table thicknesses



- Easy and safe installation**

OFIBLOCK fits into the frame at the rear and is safely secured by 4 fastening clips.



- Option of mechanisms in different finishes**

/8 /9 /14



- Integral design**

The frame incorporates straight lines and minimalist aesthetics that blend in with all furnishing styles.



Polished chrome-plated steel	Graphite grey Ral 7021
/8	/14

K45 OFIBLOCK LINE



KSF134 /8	4 usable K45 mechanisms
KSF136 /8	6 usable K45 mechanisms



i Frame finishes



Polished chrome-plated steel
(KSF13X /8)



Shiny chrome-plated steel
On request



Matt steel
On request



Colour painted option ■ ■ ■ ...
On request

K45 OFIBLOCK LINE FASTENING SUPPORT

0
Optional



KSF7 Set of 2 clips to secure the Ofiblock Line K45 with ease.
(For tables of 10 to 50 mm thick)

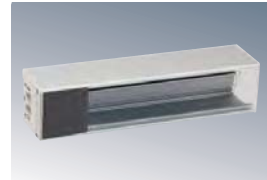


K45 OFIBLOCK REAR INPUTS (FOR FURNISHINGS FROM 10 mm THICK)



KFC134 /14	4 K45 usable mechanisms and 4 cable outlets
KFC136 /14	6 K45 usable mechanisms and 4 cable outlets

Supplied with the section, 2 side blind covers, front blind plate, 4 clamps and 3 blocks.



K45 OFIBLOCK COMPACT SIDE INPUTS (FOR FURNISHINGS FROM 10 mm TO 24 mm THICK)

KFC104 /14	4 usable K45 mechanisms
KFC106 /14	6 usable K45 mechanisms

It is supplied with the sections, side blind cover, side cable input cover and front blind plate

KITS



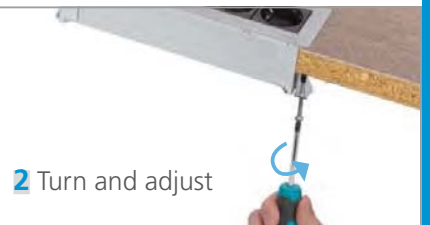
K45 Kit OFIBLOCK 4 mechanisms rear inputs

KFC1446U /14

With 3 K45 electrical sockets, 2 RJ45 connectors Cat. 6UTP, 2 electrical patch cords 3x2.5 mm², 2 m, Schuko socket and 2 UPD, 2 m.



i Assembly sequence KSF7 fastening support



i Configuration example

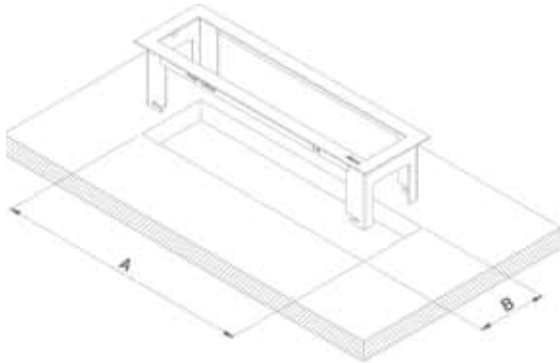


	Quantity	Ref./Finish	Description
Covering	1	KFC134/8	K45 Ofiblock Line, polished chrome-plated
	1	KFC134/14	K45 Ofiblock with 4 usable K45 mechanisms, rear inputs, graphite
Electrical sockets and plates	3	K11/14	K45 electrical socket, Schuko, quick terminal connection, graphite
	2	AC11	Connection block for multi-sockets
	1	KB96U/14	K45 V&D plate with 2 connectors Cat. 6 UTP, graphite

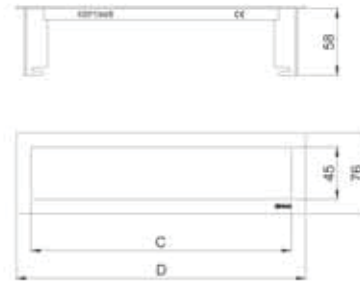
Technical details
See page 165

K45 OFIBLOCK LINE

K45 Ofiblock LINE Space

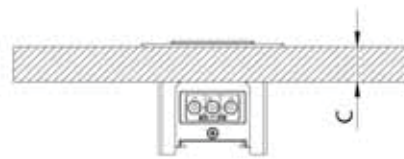
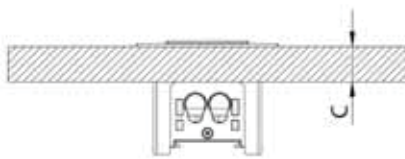


Ofiblock Line K45



References	No. of K45 modules	Dimensions		Dimensions	
		A	B	C	D
KSF134/8	4	240	64	225	256
KSF136/8	6	330	64	315	346

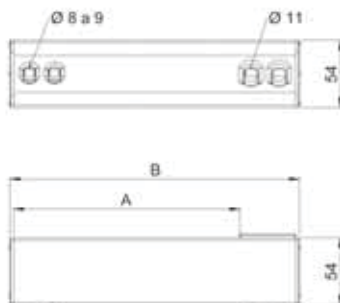
Furniture installation



	Max. thickness of furniture C	Min. thickness of furniture C
Assembled with cable retainer side plate	24	10
Assembled with 1 quick connector	20	

For furniture of more than 24 mm only fit with OFIBLOCK LINE K45, rear cable inlets.

K45 Ofiblock (rear inlet)



References	No. of K45 modules	Dimensions	
		A	B
KFC134/14	4	180	225
KFC136/14	6	270	315

Measurements in mm