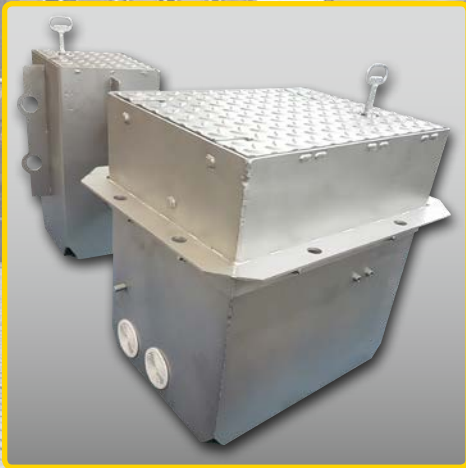


PRODUCT
INNOVATION



IN-GROUND UNDERFLOOR DISTRIBUTOR SEK20 AND SEK30: CUSTOMIZED SUPPLY!

The start into the product field of underfloor distribution

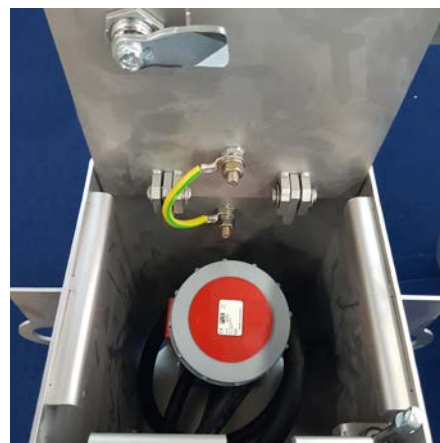
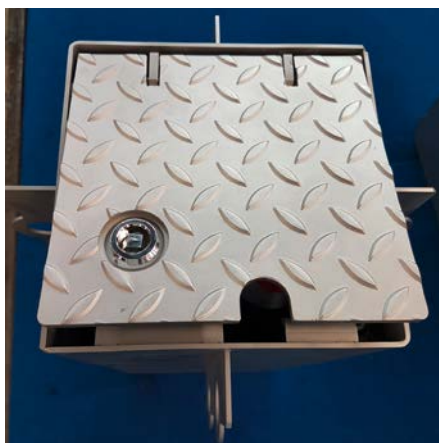
A company of the PCE group

In-ground underfloor distributor SEK20

Underfloor enclosure made of stainless steel for the mounting flush to the ground for the interior and exterior. The dimensions are (LxWxD): 200x200x400mm; the visible cover has approx. (LxW): 190x190mm.

The hinged cover with checker plate surface prevents via retractable lock a misuse through third parties. The enclosure can be selected unequipped or with an electrical coupling IP67/68 with approx. 2m flexible cable. The fusing of the coupling takes place decentralized via the supply cable.

The load bearing of the cover complies 25t according to DIN EN 124 – C250. The drainage of the enclosure takes place via a drain on site.



SEK20

| Equipping: Coupling IP67/68 | | | | article description | article-no. |
|-----------------------------|-------------------------|-------------------------|---|------------------------------|-------------|
| CEE 16A, 5P, 400V, IP67 | CEE 32A, 5P, 400V, IP67 | CEE 16A, 3P, 220V, IP67 | earthing contact coupling 16A, 220V, IP68 | | |
| - | - | - | 1 | SEK-R-20-25 16/000-0-1/OF-DE | M5062000013 |
| 1 | - | - | - | SEK-R-20-25 16/100-0-0/OF-DE | M5062000023 |
| - | - | 1 | - | SEK-R-20-25 16/000-1-0/OF-DE | M5062000053 |
| - | 1 | - | - | SEK-R-20-25 32/010-0-0/OF-DE | M5062000033 |
| - | - | - | - | SEK-R-20-25 unequipped | M5062000043 |

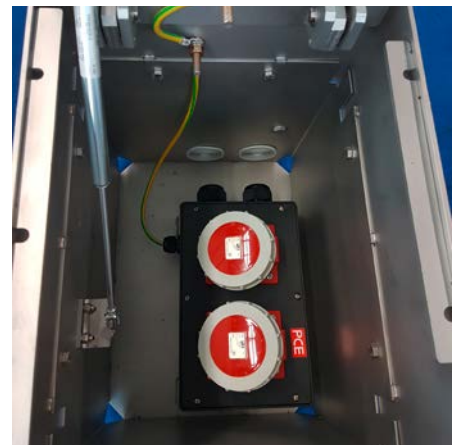
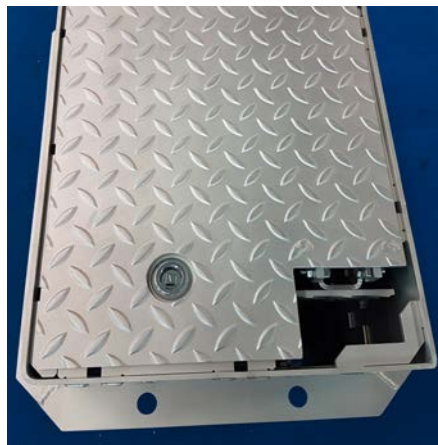
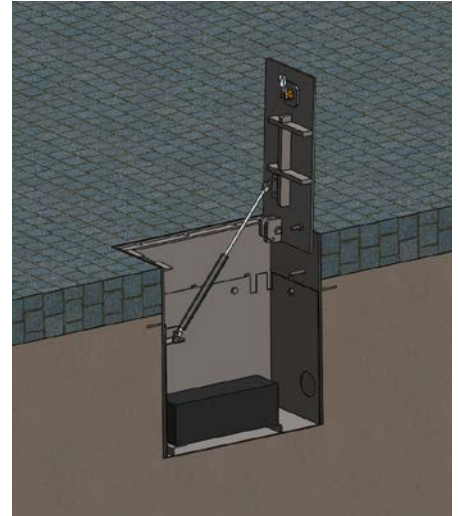
In-ground underfloor distributor SEK30

Underfloor enclosure made of stainless steel with solid rubber distributor for the mounting flush to the ground for the interior and exterior. The dimensions are (LxWxD): 480x380x420mm; the visible cover has (LxW): 400x300mm.

The hinged cover with checker plate surface prevents via retractable lock a misuse through third parties. The enclosure is equipped with a solid rubber distributor IP68 that is mounted on the ground. This distributor can optionally be casted with casting resin after the installation.

The fusing of the distributor takes place decentralized via the supply cable.

The load bearing of the cover complies 12.5t according to DIN EN 124 – B125. The drainage of the enclosure takes place via a drain on site.



| SEK30 | | | | article description | article-no. |
|-------------------------------------|-------------------------|-------------------------|-------------------------------|--------------------------------|-------------|
| Equipping: solid rubber distributor | | | | | |
| CEE 16A, 5P, 400V, IP67 | CEE 32A, 5P, 400V, IP67 | CEE 16A, 3P, 220V, IP67 | safety socket 16A, 220V, IP67 | | |
| - | - | - | 2 | SEK-R-30-12,5 16/000-0-2/OF-DE | M5063000013 |
| - | 2 | - | - | SEK-R-30-12,5 32/020-0-0/OF-DE | M5063000033 |
| - | 1 | - | 1 | SEK-R-30-12,5 32/010-0-1/OF-DE | M5063000043 |
| 2 | - | - | - | SEK-R-30-12,5 16/200-0-0/OF-DE | M5063000023 |
| 1 | - | - | 1 | SEK-R-30-12,5 16/100-0-1/OF-DE | M5063000053 |
| 1 | 1 | - | - | SEK-R-30-12,5 32/110-0-0/OF-DE | M5063000063 |
| - | 1 | 1 | - | SEK-R-30-12,5 32/010-1-0/OF-DE | M5063000073 |
| 1 | - | 1 | - | SEK-R-30-12,5 16/100-1-0/OF-DE | M5063000083 |

**„At Moser, we always
aim to offer you
exactly what you need
for your project.**

Make the most of our engineering
know-how and of the freedom
which we offer with our systems!“



Moser Systemelektrik GmbH | Kernerstraße 15 | 74405 Gaildorf | Germany
Phone: +49 (0) 7971/252 70
info@moser-systemelektrik.de | www.moser-systemelektrik.de