

Totally Product Overview 2014



A company of the PCE-Group



Connection technology made in Germany
safe – economically feasible - competent

A partner for everything

MOSER delivers its underground systems as a mounted complete unit inclusive pit. Therefore we are always your direct contact person for the whole assembly.

"Dry Inside"

The humidity control is a focal point for the designing engineers at MOSER. Other suppliers usually abdicate this. Our drainage system "Dry Inside" and an integrated heating system keep the device column and the mechanical parts dry and applicable at all weather conditions. MOSER technique protects the units against freezing, formation of condensation water, surface water, flooding and sand storms.

Concreted resource management

You can save time and money, because the needed connections on site are always available and fit for service. Furthermore the systems are extremely easy-care, service reduced and durable. The perfect ergonomics of the units enables an easy and effort-saving operation.

Needs-oriented and individual executions

The systems are offered in different size, type and modules. The well-thought-out modular construction enables equipment which is variable and two-sided. Furthermore it creates the possibility for a reconstruction or expansion.

Highest safety

The safety for humans and technique is sometimes enabled by small and inconsiderable details. Examples: an orientation light while the unit is lifted, an entry to the pit for maintenance and fitting, the system "Dry Inside", the self-locking of the device column or the use of a dead man's control.

Our service

We're at your side with our skilled employees from the planning to the insertion to the maintenance.





Hidden benefits

In many production, assembly halls and warehouses, order dependent production or quick batch changes - in short modern working models in abundance - are replacing the predefined workplace with its supply pipelines.

Retractable supply posts for current, data interfaces, water etc. which when required can be raised above ground at the turn of a crank, provides modern flexibility of temporary supplies. If the retractable supply post is lowered, devices, vehicles and systems have over ground access.

The connection provisions within the cabinets ensures safe operation for the supply provider.

Connection provision on two sides minimises trailing leads when in operation.



Underground work cost effective

Retractable supply posts by Moser Systemelektrik GmbH provide buildings and open areas with low current, emergency current, data lines, gas, compressed air or water without obstructing vehicles or pedestrians.

Modular and maintenance friendly system technology.

Simple operation with water and dust ingress protection for electrical connections, ensuring a cost effective solution.



Underground systems with spindle drive



Reliability for Municipal Supplies

Retractable supply posts are a cost effective solution for providing supplies to amenity areas, exhibition and congress halls.

Supply towers above ground are often victims of vandalism and have to be replaced or repaired. Moser retractable supply post enable the municipal engineer to provide safe power for markets, festivals and special events.

The retractable supply post is only raised when required and is otherwise concealed and thus protected.

Access is uncomplicated and is not reliant on municipal staff.

The market stand owner or exhibition official only requires a crank handle and the retractable supply post is ready for use.

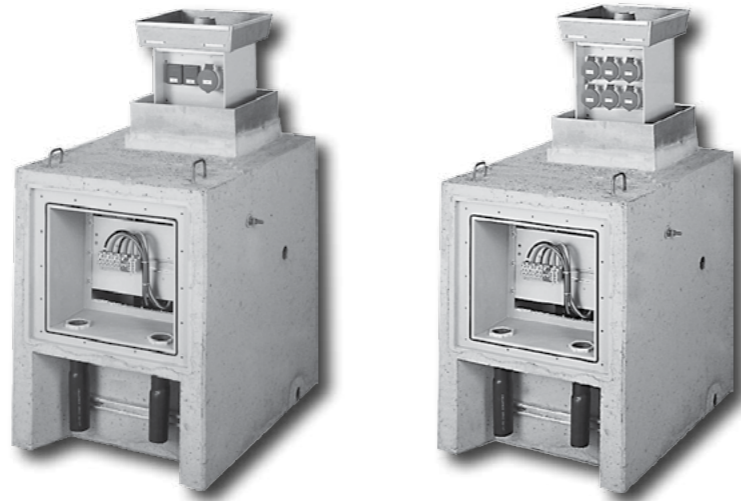
In addition to the economical factors, the avoidance of cable routing above ground and the resulting safety for pedestrians and handicapped persons etc. are vital features of the retractable supply posts.

Flexible utilisation of space and concealed storage enable energy to be supplied. When not in use an uncluttered streetscape can be maintained.





Equipment options



MSSE30+MSSE30AH500

Consisting of:

Concrete shaft

Supporting concrete shaft under the provisions of DIN 1045 - B 35 (for traffic loads under the provisions of DIN 1072, bridge class SLW 60) for a protected insertion of the retractable supply post into soil.

There are integrated:

- Cable connection box for the assembly of a connecting module
- Two cable lead throughs for the reception of an incoming cable
- 1 cable terminal box for the rigid connection cable to the internal flexible connection cable. (5x6 mm²), incl. C-rail for tension relief of the connection cable
- Thread-connection plug for the installation of the exterior earth contact
- 2 DN40-drain pipes for connection to the sewage system:
- Surface water drainage sideways in the shaft
- Shaft drainage in the bottom of the shaft

Shaft insertion

System-oriented, metal insertion of corrosion resistant aluminium consisting of:

- Guide frame (corrosion resistant aluminium profiles) as sliding supports for the device column
- Cover support with sealing, pavement frame, drainage, open pipe for surface water drainage
- Bottom support with lifting mechanism (threaded-spindle, spindle-guide and spindle nut)

Device column

Extendable, horizontal case construction out of weather resistant PVC, with built-on shift cover of cast aluminium, built-in space of 50 mm for pavement. The case of insulated material (IP 55) is a self supporting construction and constructed as a rugged and shock resistant device. 2 sides (A + B) are provided for the equipment of the device.

Lead-in by flexible connection cable 5 x 16 mm².

The lifting mechanism with threaded spindle is located in the centre of the device column.

Watertight opening of spindle drive through the cover.

Self-regulating heating in the electrical operating room to protect from frost damage and condensation.

Electric device modules

The interior wiring of the devices and the feeding-in are arranged for the TN-S system.

Wiring for other systems only after technical clarification and written contract.

Cable connection module KAM 16-1

PVC device supporting base with series clamps 16/25 mm², 5 P to feed in or slide on the supply cable. (approx. 5 x 25 mm²) and the leading-off cable (approx. 5 x 16 mm²), Pre-fuse NH 0025 A plug-clutch 35 A 3 P, heavy plug-in connection 35 A, 5 P und and tension relief for the flexible connection cable. (5 x 6 mm²)

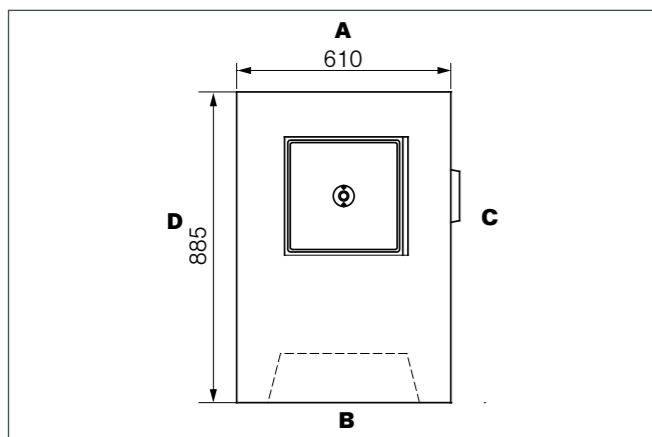
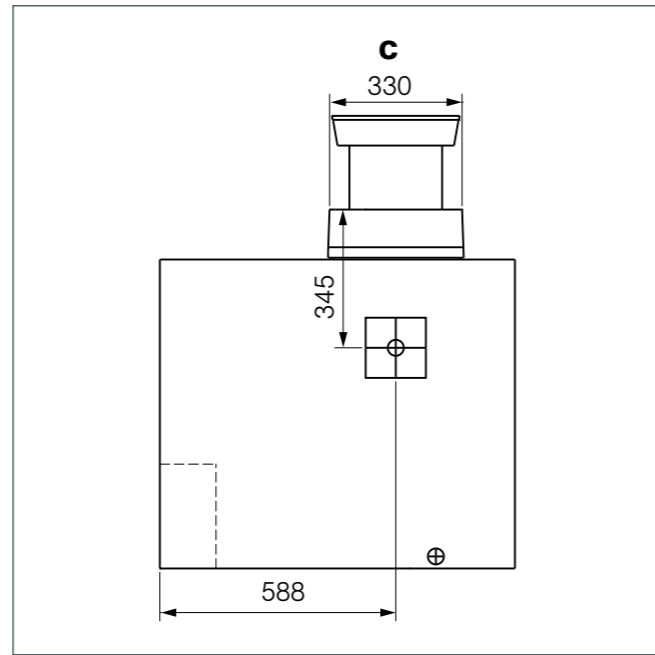
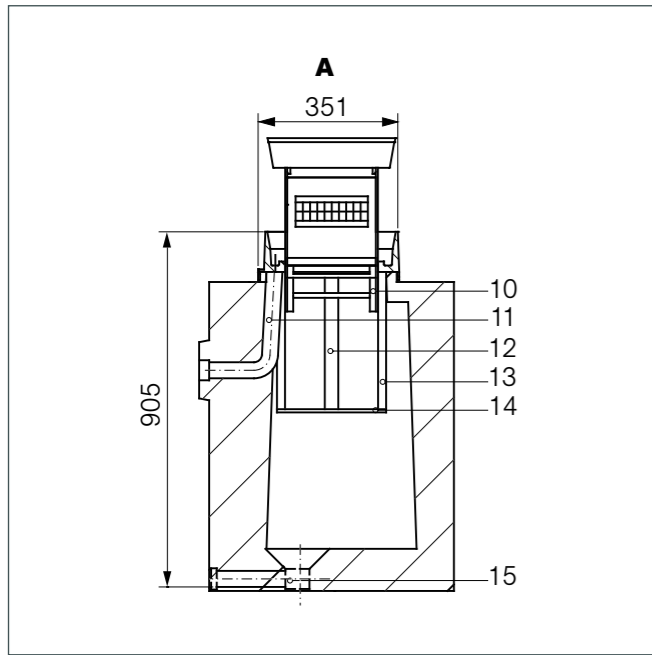
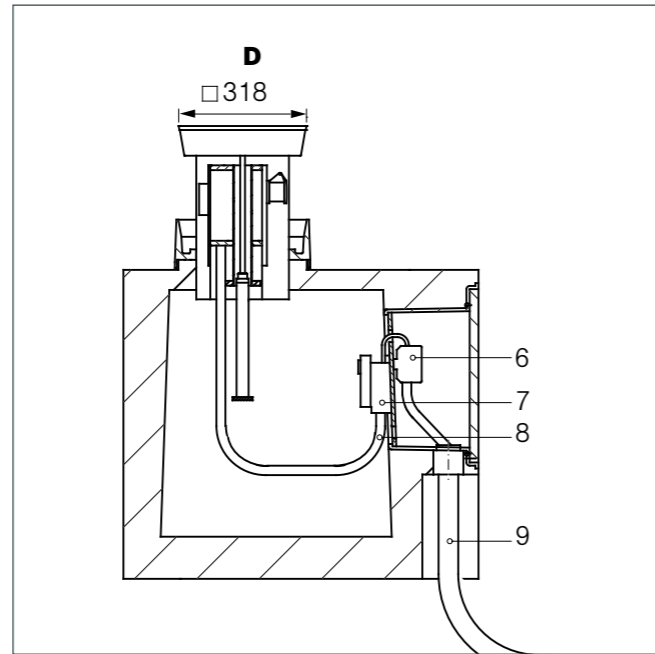
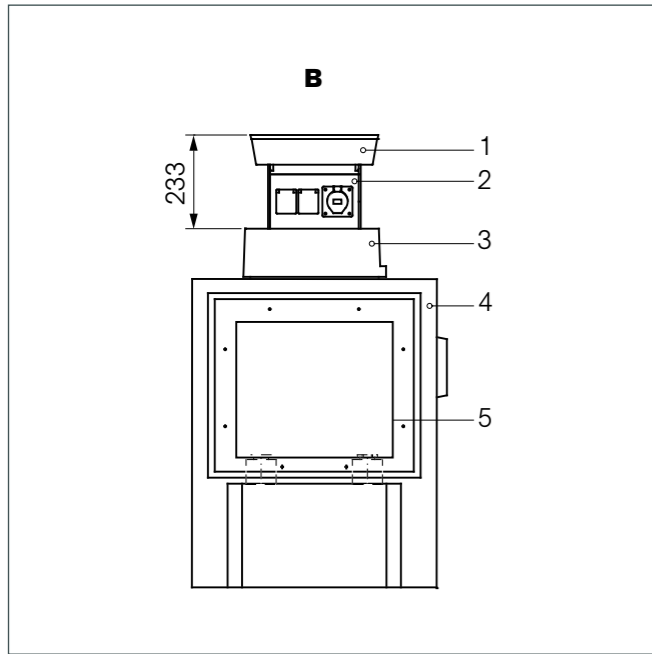
Cable leading on KDF 16-1

Screwing sockets M40 (d_i = 31 mm) with shrink-hose (d_i = 63-19 mm) for watertight leading of the connection cable (d_a = approx. 30 mm) and of the leading-off cable (d_a = approx. 30 mm)

Technical data	SE30A	SE30AH500
Protection stages:	IP 44 for electrical sockets IP 65 for distributors	
Protection equipment:	earth contact class 1	
Mains voltage/frequency:	230/400V, 50 Hz	
Kind of voltage:	TN-S system	
Connection value:	approx. 15 kW	
Feed in cable approx. permissible:	5 x 16 mm ²	
Concrete shaft + shaft insert:	570 kg	580 kg
Device column equipped:	30 kg	50 kg
Concrete shaft (H x W x D):	795 x 610 x 885 mm	
Cover support (incl. sealing compound):	110 mm	
Installation depth:	905 mm	
Extendible height:	233 mm	400 mm
Space for pavement in cover:	50 mm	
Load capacity for the paved cover:	D 400, 40 t point load	
Lifting mechanism:	Thread spindle	
Sewage connections:	2 St. DN 40	

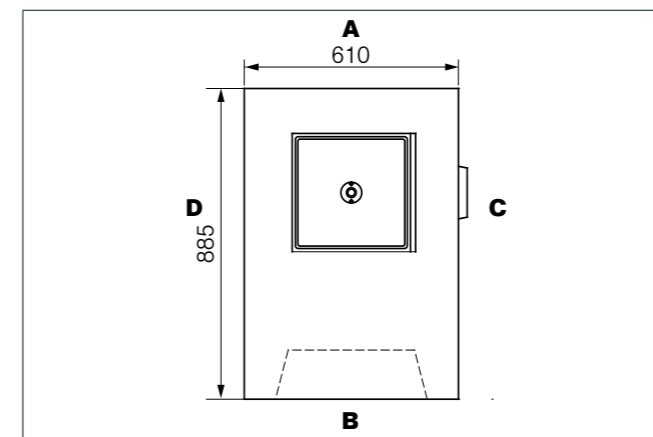
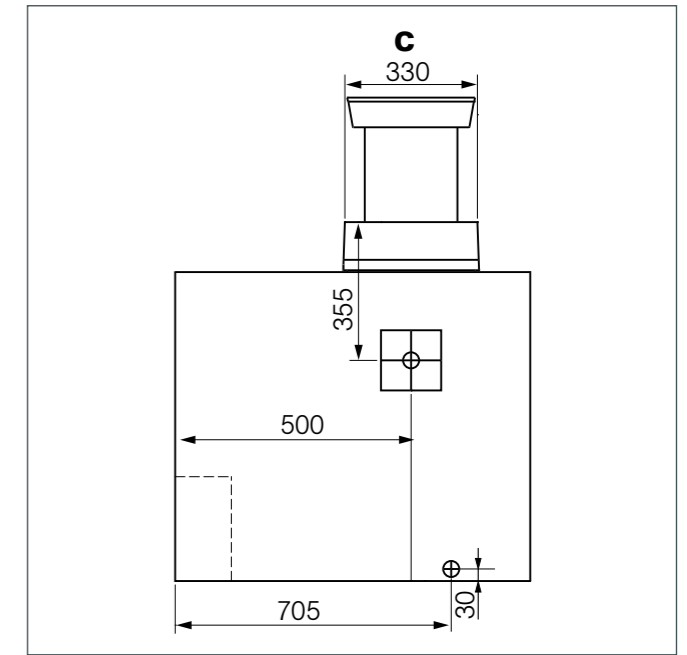
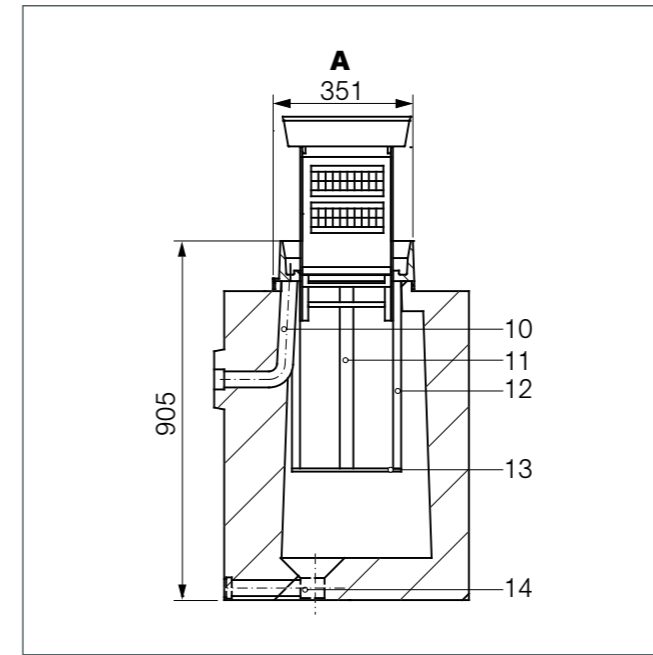
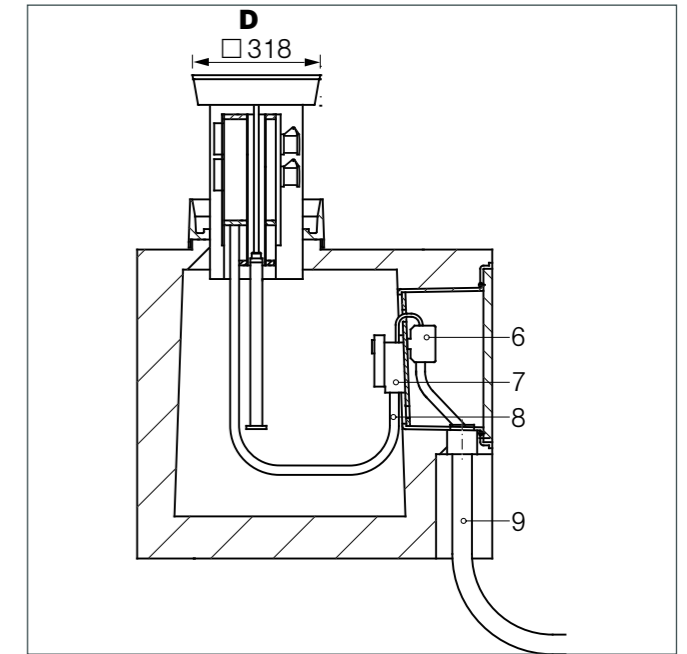
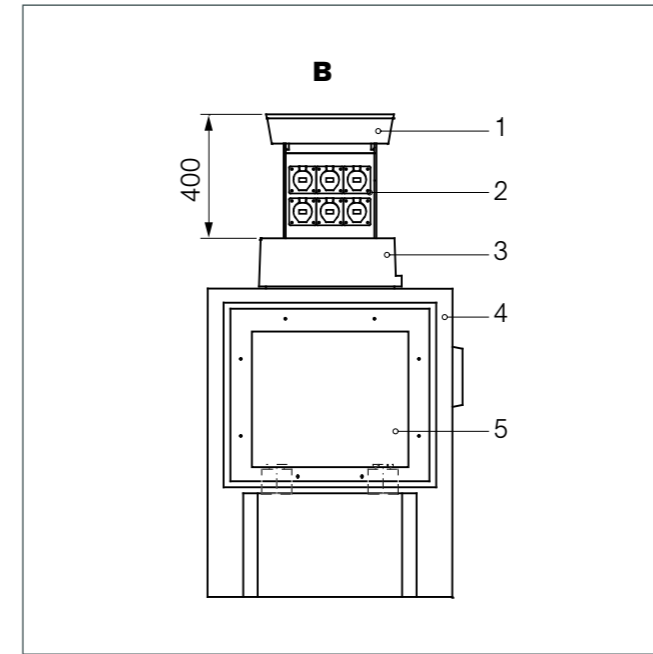
SE30A Equipment options	Order-No.
2 protective contact sockets 16 A, incl. elcb + mcb	M5033000010
3 protective contact sockets 16 A, incl. elcb + mcb	M5033000020
4 protective contact sockets 16 A, incl. elcb + mcb	M5033000030
1 CEE 16 A 3P, 1 protective contact sockets 16 A, incl. elcb + mcb	M5033000040
1 CEE 16 A 3P, 2 protective contact sockets 16 A, incl. elcb + mcb	M5033000050
2 CEE 16 A 3P, incl. elcb + mcb	M5033000060
3 CEE 16 A 3P, incl. elcb + mcb	M5033000070
2 protective contact sockets 16 A lockable, incl. elcb + mcb	M5033000080
2 CEE 16 A 3P lockable, incl. elcb + mcb	M5033000090
1 CEE 16 A 5P, 2 protective contact sockets 16 A, incl. elcb + mcb	M5033010010
1 CEE 16 A 5P, 1 protective contact sockets 16 A, incl. elcb + mcb	M5033010020
1 CEE 16 A 5P, 1 CEE 16 A 3P, incl. elcb + mcb	M5033010030
1 CEE 16 A 5P, 1 protective contact sockets 16 A, lockable, incl. elcb + mcb	M5033010040
1 CEE 16 A 5P, 1 CEE 16 A 3P, lockable, incl. elcb + mcb	M5033010050

SE30AH500 Equipment options	Order-No.
6 CEE 16 A 3P, incl. elcb + mcb	M5033100010
4 protective contact sockets 16 A, incl. elcb + mcb	M5033100020
8 protective contact sockets 16 A, incl. elcb + mcb	M5033100030
2 CEE 16 A 3P, 4 protective contact sockets 16 A, incl. elcb + mcb	M5033100040
4 protective contact sockets 16 A lockable, incl. elcb + mcb	M5033100050
2 CEE 16 A 3P, 2 protective contact sockets 16 A, lockable, incl. elcb + mcb	M5033100060
4 CEE 16 A 3P, lockable, incl. elcb + mcb	M5033100070
2 protective contact sockets 16 A, 1 CEE 16 A 5P, incl. elcb + mcb	M5033100080
1 CEE 16 A 5P, 3 protective contact sockets 16 A, incl. elcb + mcb	M5033110010
2 CEE 16 A 5P, 4 protective contact sockets 16 A, incl. elcb + mcb	M5033110020
1 CEE 16 A 5P, 3 CEE 16 A 3P, incl. elcb + mcb	M5033110030
2 CEE 16 A 5P, 2 CEE 16 A 3P, incl. elcb + mcb	M5033110040
1 CEE 16 A 5P, 3 protective contact sockets 16 A, lockable, incl. elcb + mcb	M5033110050
2 CEE 16 A 5P, 2 protective contact sockets 16 A, lockable, incl. elcb + mcb	M5033110060
1 CEE 16 A 5P, 3 CEE 16 A 3P, lockable, incl. elcb + mcb	M5033110070



- | | |
|--------------------------------|---|
| 1 - Cover | 9 - Lead in cable (to prov. before inst.) |
| 2 - Case of insulated material | 10 - Guide |
| 3 - Cover support | 11 - Surface water drainag |
| 4 - Concrete shaft | 12 - Lifting mechanism |
| 5 - Cable connection box | 13 - Frame of guide |
| 6 - Connection clamps | 14 - Bottom support |
| 7 - Pre-fuse | 15 - Drainage of shaft |
| 8 - Flexible connection cable | |

Measures in mm

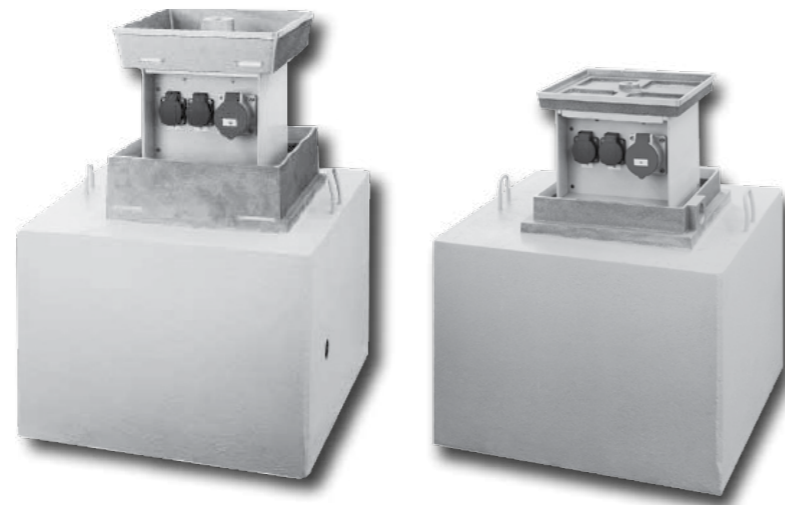


- | | |
|--------------------------------|---|
| 1 - Cover | 9 - Lead in cable (to prov. before inst.) |
| 2 - Case of insulated material | 10 - Surface water drainag |
| 3 - Cover support | 11 - Lifting mechanism |
| 4 - Concrete shaft | 12 - Frame of guide |
| 5 - Cable connection box | 13 - Traverse |
| 6 - Connection clamps | 14 - Drainage of shaft |
| 7 - Pre-fuse | |
| 8 - Flexible connection cable | |

Measures in mm



Equipment options



MSSE30AN+MSSE30IN

Consisting of:

Concrete shaft

Supporting concrete shaft under the provisions of DIN 1045 - B 35 (for traffic loads under the provisions of DIN 1072, bridge class SLW 60) for a protected insertion of the retractable supply post into soil.

There are integrated:

- Cable connection box for the assembly of a connecting module
- Two cable lead throughs for the reception of an incoming cable
- 1 cable terminal box for the rigid connection cable to the internal flexible connection cable. (5 x 6 mm²), incl. C-rail for tension relief of the connection cable
- Thread-connection plug for the installation of the exterior earth contact
- 2 DN 40-drain pipes for connection to the sewage system:
- Surface water drainage sideways in the shaft
- Shaft drainage in the bottom of the shaft

Shaft insertion

System-oriented, metal insertion of corrosion resistant aluminium consisting of:

- Guide frame (corrosion resistant aluminium profiles) as sliding supports for the device column
- Cover support with sealing, pavement frame, drainage, open pipe for surface water drainage
- Bottom support with lifting mechanism (threaded-spindle, spindle-guide and spindle nut)

Device column

Extendable, horizontal case construction out of weather resistant PVC, with built-on shift cover of cast aluminium, built-in space of 50 mm for pavement.

The case of insulated material (IP 55) is a self supporting construction and constructed as a rugged and shock resistant device. 2 sides (A + B) are provided for the equipment of the device. Lead-in by flexible connection cable 5 x 6 mm². The lifting mechanism with threaded spindle is located in the centre of the device column. Watertight opening of spindle drive through the lid. Self-regulating heating in the electrical operating room to protect from frost damage and condensation.

Electric device modules

The interior wiring of the devices and the feeding-in are arranged for the TN-S system. Wiring for other systems only after technical clarification and written contract.

Cable connection module KAM 16-1

PVC device supporting base with series clamps 16/25 mm², 5 P to feed in or slide on the supply cable. (approx. 5 x 25 mm²) and the leading-off cable (approx. 5 x 16 mm²), Pre-fuse NH 0025 A plug-clutch 35 A 3 P, heavy plug-in connection 35 A, 5 P und and tension relief for the flexible connection cable. (5 x 6 mm²)

Cable leading on KDF 16-1

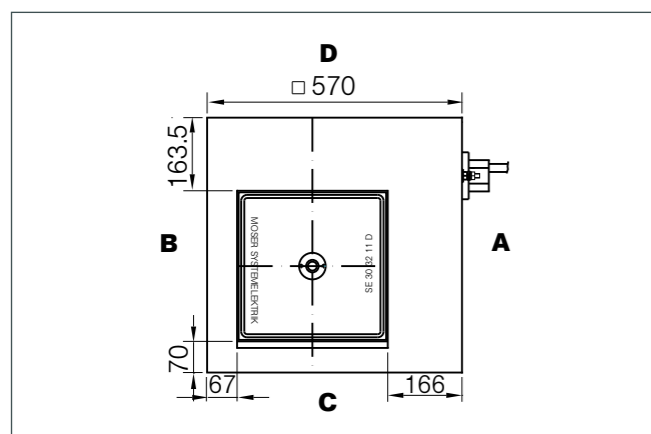
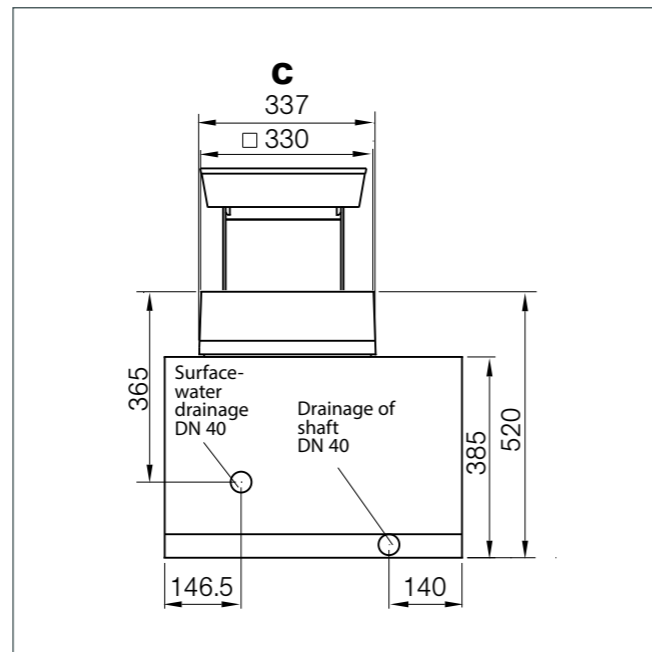
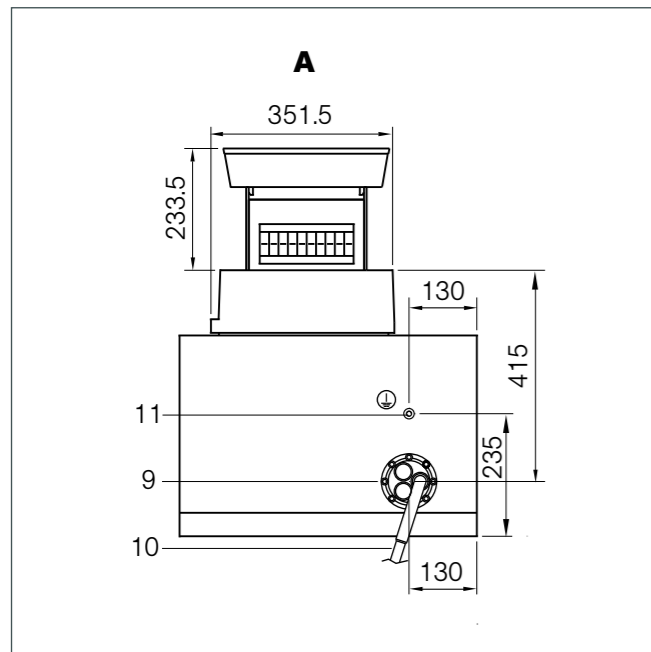
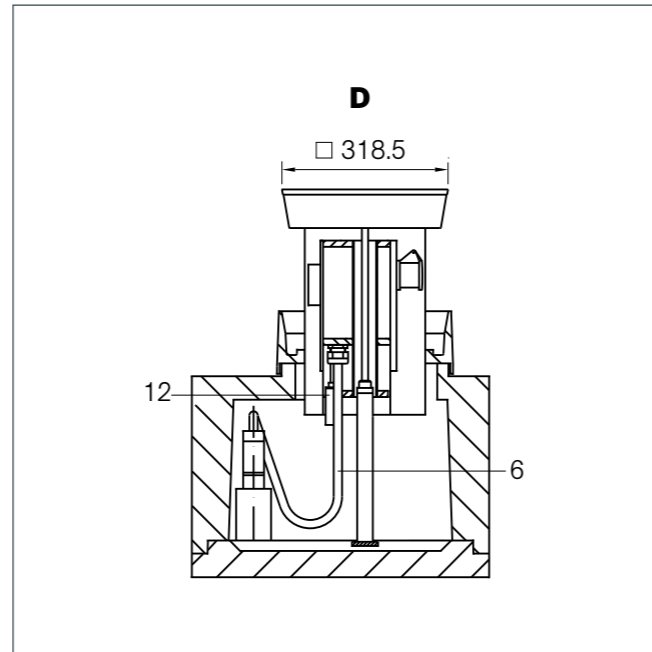
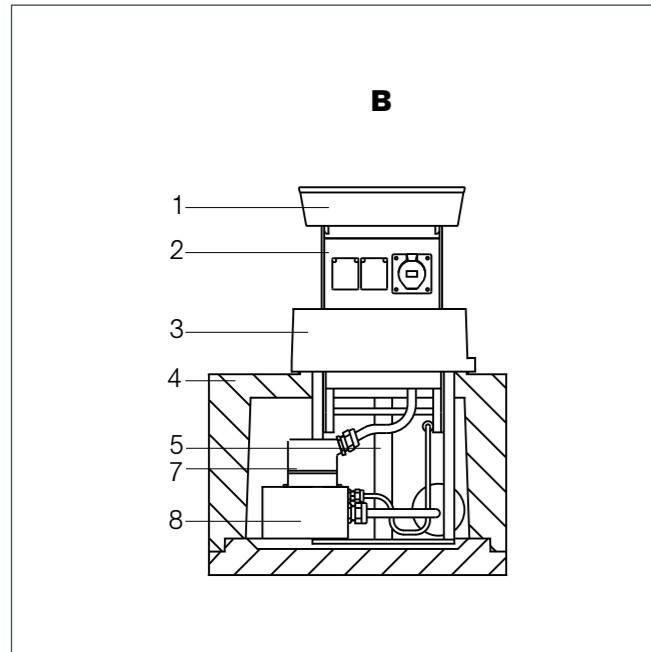
Screwing sockets M40 (d_i = 31 mm) with shrink-hose (d_i = 63 - 19 mm) for watertight leading of the connection cable (d_a = approx. 30 mm) and of the leading-off cable (d_a = approx. 30 mm)

Technical data	SE30AN	SE30IN
Protection stages:	IP 44 for electrical sockets IP 65 for distributors	
Protection equipment:	earth contact class 1	
Mains voltage /frequency:	230/400V, 50 Hz	
Kind of voltage:	TN-S system	
Connection value:	approx. 15 kW	
Feed in cable approx. permissible:	5 x 6 mm ²	
Concrete shaft + shaft insert:	200 kg	
Device column equipped:	30 kg	
Concrete shaft (H x W x D):	410 x 570 x 570 mm	
Cover support (incl. sealing compound):	110 mm	60 mm
Installation depth:	520 mm	470 mm
Extendible height:	233 mm	400 mm
Space for pavement in cover:	50 mm	20 mm
Load capacity for the paved cover:	D 400, 40 t point load	B 125, 12,5 t point load
Lifting mechanism::	Thread spindle	
Sewage connections:	2 St. DN 40	

SE30AN Equipment options	Order-No.
2 protective contact sockets 16 A, incl. elcb + mcb	M5033400010
3 protective contact sockets 16 A, incl. elcb + mcb	M5033400020
4 protective contact sockets 16 A, incl. elcb + mcb	M5033400030
1 CEE 16 A 3P, 1 protective contact sockets 16 A, incl. elcb + mcb	M5033400040
1 CEE 16 A 3P, 2 protective contact sockets 16 A, incl. elcb + mcb	M5033400050
2 CEE 16 A 3P, incl. elcb + mcb	M5033400060
3 CEE 16 A 3P, incl. elcb + mcb	M5033400070
2 protective contact sockets 16 A lockable, incl. elcb + mcb	M5033400080
2 CEE 16 A 3P lockable, incl. elcb + mcb	M5033400090
1 CEE 16 A 5P, 2 protective contact sockets 16 A, incl. elcb + mcb	M5033410010
1 CEE 16 A 5P, 1 protective contact sockets 16 A, incl. elcb + mcb	M5033410020
1 CEE 16 A 5P, 1 CEE 16 A 3P, incl. elcb + mcb	M5033410030
1 CEE 16 A 5P, 1 protective contact sockets 16 A, lockable, incl. elcb + mcb	M5033410040
1 CEE 16 A 5P, 1 CEE 16 A 3P, lockable, incl. elcb + mcb	M5033410050

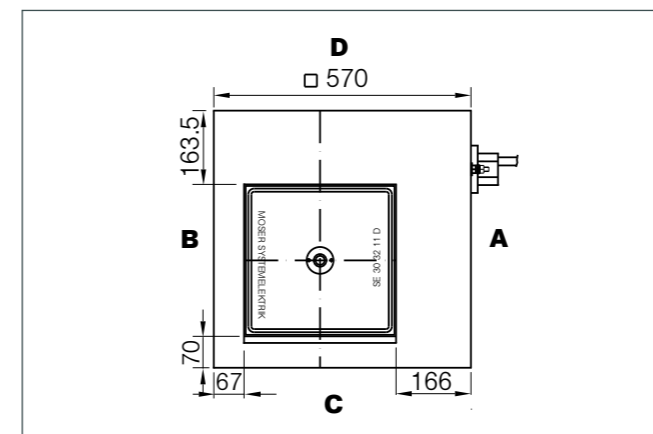
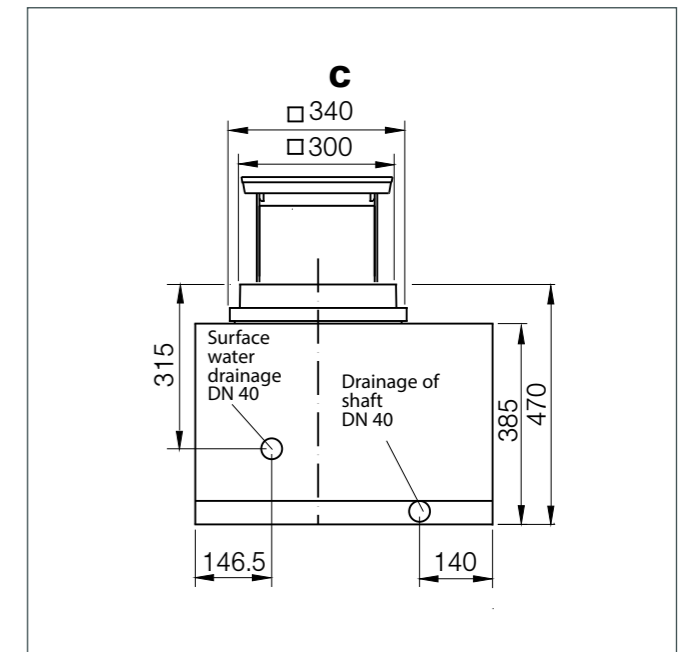
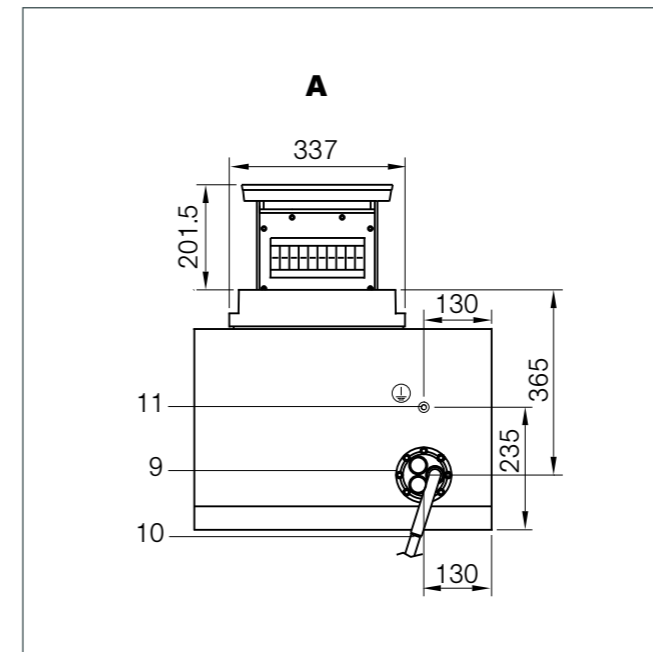
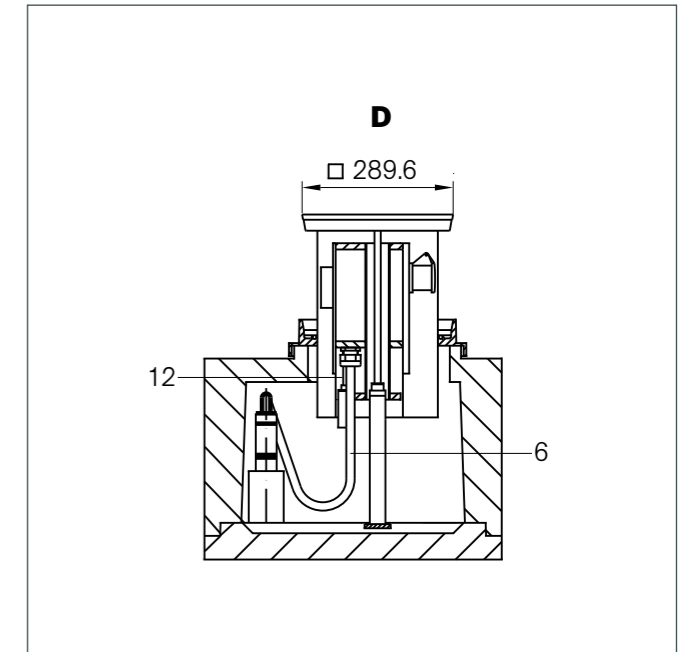
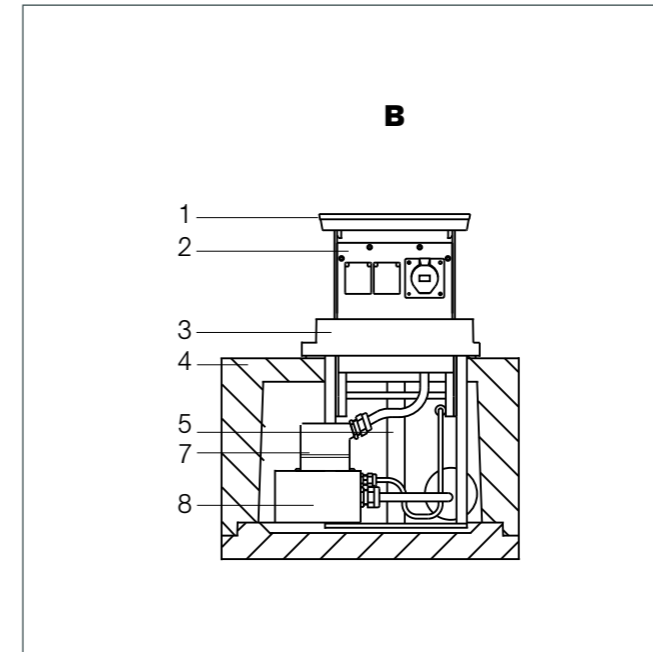
MSSE30AN+MSSE30IN

SE30IN Equipment options	Order-No.
2 protective contact sockets 16 A, incl. elcb + mcb	M5033300010
3 protective contact sockets 16 A, incl. elcb + mcb	M5033300020
4 protective contact sockets 16 A, incl. elcb + mcb	M5033300030
1 CEE 16 A 3P, 1 protective contact sockets 16 A, incl. elcb + mcb	M5033300040
1 CEE 16 A 3P, 2 protective contact sockets 16 A, incl. elcb + mcb	M5033300050
2 CEE 16 A 3P, incl. elcb + mcb	M5033300060
3 CEE 16 A 3P, incl. elcb + mcb	M5033300070
2 protective contact sockets 16 A lockable, incl. elcb + mcb	M5033300080
2 CEE 16 A 3P lockable, incl. elcb + mcb	M5033300090
1 CEE 16 A 5P, 2 protective contact sockets 16 A, incl. elcb + mcb	M5033310010
1 CEE 16 A 5P, 1 protective contact sockets 16 A, incl. elcb + mcb	M5033310020
1 CEE 16 A 5P, 1 CEE 16 A 3P, incl. elcb + mcb	M5033310030
1 CEE 16 A 5P, 1 protective contact sockets 16 A, lockable, incl. elcb + mcb	M5033310040
1 CEE 16 A 5P, 1 CEE 16 A 3P, lockable, incl. elcb + mcb	M5033310050



- 1 - Cover
- 2 - Case of insulated material
- 3 - Cover support
- 4 - Concrete shaft
- 5 - Lifting mechanism
- 6 - Flexible connection cable
- 7 - 35 A-plug connection
- 8 - Cable connection box
- 8 - Cable connection box
- 9 - Cable leading
- 10 - Power supply cable NYY-I 5x6 mm² to be connected with castresin connection
- 11 - M 10 Thread-connection plug for the earth contact
- 12 - Heating

Measures in mm

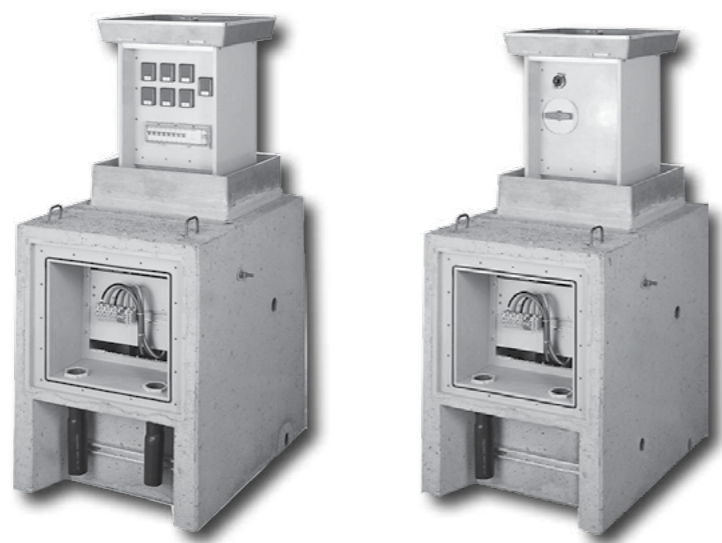


- 1 - Cover
- 2 - Case of insulated material
- 3 - Cover support
- 4 - Concrete shaft
- 5 - Lifting mechanism
- 6 - Flexible connection cable
- 7 - 35 A-plug connection
- 8 - Cable connection box
- 9 - Cable leading
- 10 - Power supply cable NYY-I 5x6 mm² to be connected with castresin connection
- 11 - M 10 Thread-connection plug for the earth contact
- 12 - Heating

Measures in mm



Equipment options



Technical data	SE50	SEH50
Protection stages:	IP 44 for electrical sockets IP 65 for distributors	
Protection equipment:	earth contact class 1	
Mains voltage/frequency:	230/400V, 50 Hz	
Kind of voltage:	TN-S system	
Connection value:	approx. 30 kW	
Feed in cable approx. permissible:	5 x 16 mm ²	
Concrete shaft + shaft insert:	620 kg	630 kg
Device column equipped:	65 kg	
Concrete shaft (H x W x D):	795 x 610 x 885 mm	795 x 610 x 1036 mm
Cover support (incl. sealing compound):	110 mm	
Installation depth:	905 mm	
Extendible height:	466 mm	
Space for pavement in cover:	50 mm	
Load capacity for the paved cover:	D 400, 40 t point load	
Lifting mechanism:	Thread spindle	
Sewage connections:	2 St. DN 40	

Consisting of:

Concrete shaft

Supporting concrete shaft under the provisions of DIN 1045 - B 35 (for traffic loads under the provisions of DIN 1072, bridge class SLW 60) for a protected insertion of the retractable supply post into soil.

There are integrated:

- Cable connection box for the assembly of a connecting module
- Two cable lead throughs for the reception of an incoming cable
- C-rail for tension relief of the connection cable
- Thread-connection plug for the installation of the exterior earth contact
- 2 DN40-drain pipes for connection to the sewage system:
- Surface water drainage sideways in the shaft
- Shaft drainage in the bottom of the shaft
- Additional for SEH56: fresh water connection sleeve 1"

Shaft insertion

System-oriented, metal insertion of corrosion resistant aluminium consisting of:

- Guide frame (corrosion resistant aluminium profiles) as sliding supports for the device column
- Cover support with sealing, pavement frame, drainage, open pipe for surface water drainage
- Bottom support with lifting mechanism (threaded-spindle, spindle-guide and spindle nut)

Device column

Extendable, horizontal case construction out of weather resistant PVC, with built-on shift cover of cast aluminium, built-in space of 50 mm for pavement. The case of insulated material (IP 55) is a self supporting construction and constructed as a rugged and shock resistant device. 2 sides (A + B) are provided for the equipment of the device.

Lead-in by flexible connection cable 5 x 16 mm². The lifting mechanism with threaded spindle is located in the centre of the device column. Watertight opening of spindle drive through the cover.

Self-regulating heating in the electrical operating room to protect from frost damage and condensation.

Electric device modules

The interior wiring of the devices and the feeding-in are arranged for the TN-S system.

Wiring for other systems only after technical clarification and written contract.

Cable connection module KAM 16-1

PVC device supporting base with series clamps 16/25 mm², 5 P to feed in or slide on the supply cable. (approx. 5 x 25 mm²) and the leading-off cable (approx. 5 x 16 mm²), Pre-fuse NH 0063 A plug-clutch 80 A 3 P, plug-in connection 35 A, 5 P und and tension relief for the flexible connection cable. (5 x 6 mm²)

Cable leading on KDF 16-1

Screwing sockets M40 (d_i = 31 mm) with shrink-hose (d_i = 63 - 19 mm) for watertight leading of the connection cable (d_a = approx. 30 mm) and of the leading-off cable (d_a = approx. 30 mm)

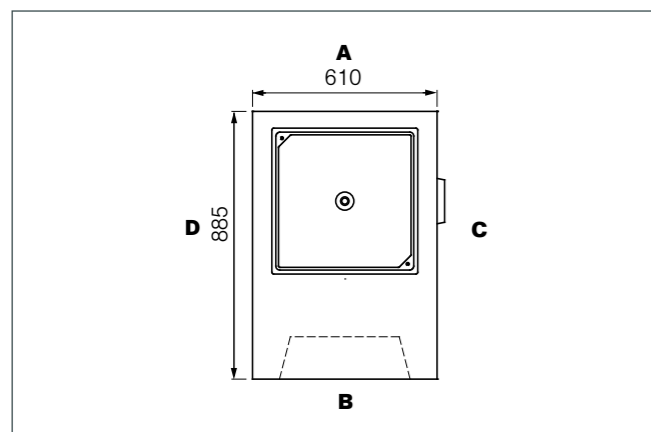
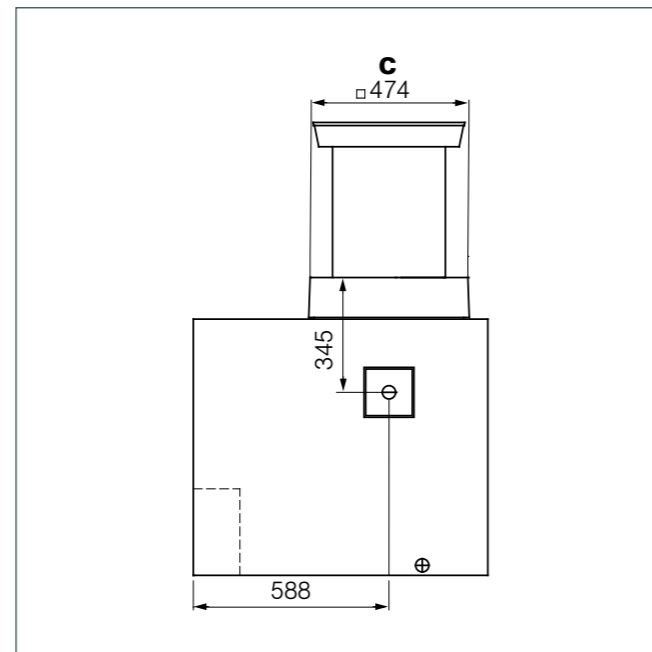
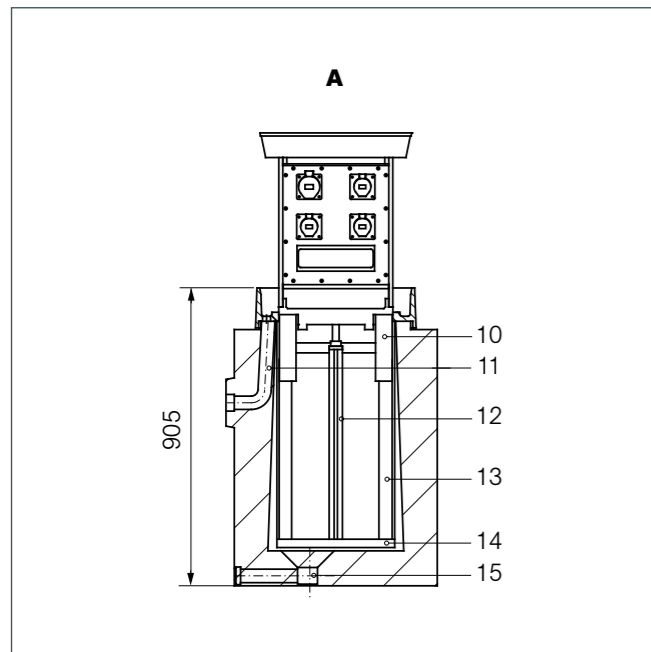
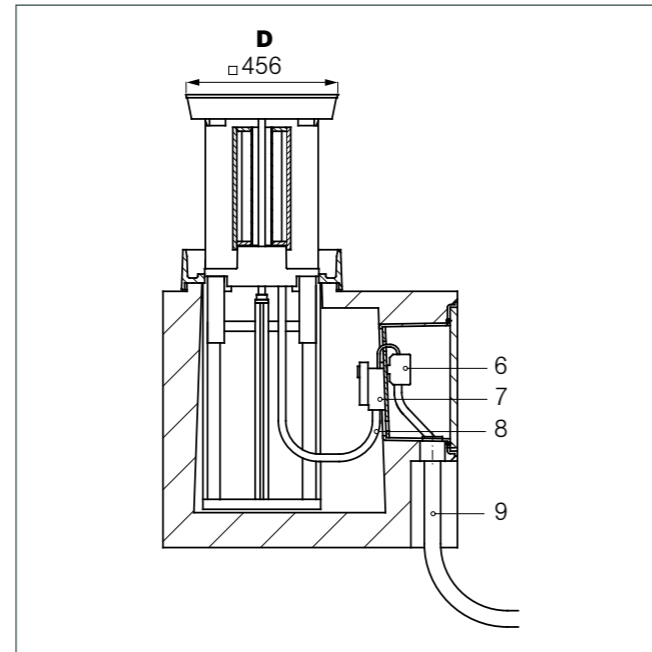
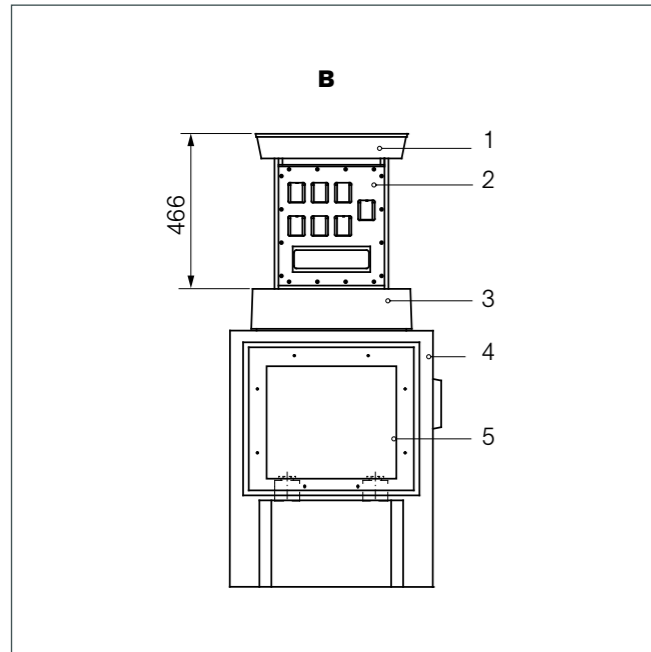
SE50 Equipment options	Order-No.
16 protective contact sockets 16 A, incl. elcb + mcb	M5035000010
12 protective contact sockets 16 A lockable, incl. elcb + mcb	M5035000020
4 CEE 16 A 3P, 8 protective contact sockets 16 A, incl. elcb + mcb	M5035000030
12 CEE 16 A 3P, incl. elcb + mcb	M5035000040
12 CEE 16 A 3P, lockable, incl. elcb + mcb	M5035000050
8 CEE 16 A 3P, incl. elcb + mcb	M5035000060
8 CEE 16 A 3P lockable, incl. elcb + mcb	M5035000070
1 CEE 16 A 5P, 12 protective contact sockets 16 A, incl. elcb + mcb	M5035011010
1 CEE 16 A 5P, 10 protective contact sockets 16 A, lockable, incl. elcb + mcb	M5035011020
1 CEE 16 A 5P, 8 CEE 16 A 3P, incl. elcb + mcb	M5035011030
1 CEE 16 A 5P, 8 CEE 16 A 3P, lockable, incl. elcb + mcb	M5035011040
2 CEE 16 A 5P, 10 protective contact sockets 16 A, incl. elcb + mcb	M5035012010
2 CEE 16 A 5P, 8 CEE 16 A 5P, incl. elcb + mcb	M5035012020
3 CEE 16 A 5P, 8 protective contact sockets 16 A, incl. elcb + mcb	M5035013010
3 CEE 16 A 5P, 6 CEE 16 A 5P, incl. elcb + mcb	M5035013020
4 CEE 16 A 5P, 6 protective contact sockets 16 A, incl. elcb + mcb	M5035014010
4 CEE 16 A 5P, 6 CEE 16 A 5P, incl. elcb + mcb	M5035014020
2 CEE 32 A 5P, 6 CEE 16 A 3P, incl. elcb + mcb	M5035014030
1 CEE 32 A 5P, 6 CEE 16 A 3P, incl. elcb + mcb	M5035014040
1 CEE 32 A 5P, 1 CEE 16 A 5P, 2 CEE 16 A 3P, 4 protective contact sockets 16 A, 1 RJ45, incl. elcb + mcb	M5035030020
1 CEE 32 A 5P, 1 CEE 16 A 5P, 10 protective contact sockets 16 A, incl. elcb + mcb	M5035031010
1 CEE 32 A 5P, 1 CEE 16 A 5P, 8 protective contact sockets 16 A, lockable, incl. elcb + mcb	M5035031020
1 CEE 32 A 5P, 1 CEE 16 A 5P, 8 CEE 16 A 3P, incl. elcb + mcb	M5035031030
1 CEE 32 A 5P, 1 CEE 16 A 5P, 8 CEE 16 A 3P, lockable, incl. elcb + mcb	M5035031040
1 CEE 32 A 5P, 1 CEE 16 A 5P, 2 CEE 16 A 3P, 8 protective contact sockets, incl. elcb + mcb	M5035031050
1 CEE 32 A 5P, 2 CEE 16 A 5P, 2 CEE 16 A 3P, 6 protective contact sockets, incl. elcb + mcb	M5035031060
2 CEE 32 A 5P, 1 CEE 16 A 5P, 2 CEE 16 A 3P, 6 protective contact sockets, incl. elcb + mcb	M5035032060
2 CEE 32 A 5P, 2 CEE 16 A 5P, 2 CEE 16 A 3P, 3 protective contact sockets, incl. elcb + mcb	M5035032260
1 CEE 32 A 5P, 1 CEE 16 A 5P, 2 CEE 16 A 3P, 7 protective contact sockets 16 A, incl. elcb + mcb	M5035032310
1 CEE 63 A 5P, 1 CEE 16 A 5P, 2 CEE 16 A 3P, 4 protective contact sockets 16 A, 1 RJ45, incl. elcb + mcb	M5035060030
1 CEE 63 A 5P, 1 CEE 16 A 5P, 6 CEE 16 A 3P, incl. elcb + mcb	M5035061030
1 CEE 63 A 5P, 1 CEE 16 A 5P, 8 protective contact sockets 16 A, incl. elcb + mcb	M5035061040
1 CEE 63 A 5P, 1 CEE 16 A 5P, 2 CEE 16 A 3P, 4 protective contact sockets 16 A, incl. elcb + mcb	M5035061050
1 CEE 63 A 5P, 1 CEE 32 A 5P, 6 CEE 16 A 3P, incl. elcb + mcb	M5035061330
1 CEE 63 A 5P, 1 CEE 32 A 5P, 8 protective contact sockets 16 A, incl. elcb + mcb	M5035061340
1 CEE 63 A 5P, 1 CEE 32 A 5P, 2 CEE 16 A 3P, 4 protective contact sockets 16 A, incl. elcb + mcb	M5035061350
1 CEE 63 A 5P, 1 CEE 32 A 5P, 1 CEE 16 A 5P, 4 CEE 16 A 3P, incl. elcb + mcb	M5035061530
1 CEE 63 A 5P, 1 CEE 32 A 5P, 1 CEE 16 A 5P, 6 protective contact sockets 16 A, incl. elcb + mcb	M5035061540
1 CEE 63 A 5P, 1 CEE 16 A 5P, 2 CEE 16 A 3P, 7 protective contact sockets 16 A, incl. elcb + mcb	M5035061550

MSSE50+MSSEH50

SEH50 Equipment options	Order-No.
1 water, 1 CEE 32 A 5P, 1 CEE 16 A 5P, 2 CEE 16 A 3P, incl. elcb + mcb	M5035080010
1 water, 1 CEE 32 A 5P, 1 CEE 16 A 5P, 2 protective contact sockets 16 A, incl. elcb + mcb	M5035080020
1 water, 1 CEE 32 A 5P, 1 CEE 16 A 5P, 4 protective contact sockets 16 A, incl. elcb + mcb	M5035080030
1 water, 1 CEE 32 A 5P, 1 CEE 16 A 5P, 4 CEE 16 A 3P, incl. elcb + mcb	M5035080040
1 water, 2 CEE 16 A 5P, 2 CEE 16 A 3P, incl. elcb + mcb	M5035080210
1 water, 2 CEE 16 A 5P, 2 protective contact sockets 16 A, incl. elcb + mcb	M5035080220
1 water, 2 CEE 32 A 5P, 2 CEE 16 A 3P, incl. elcb + mcb	M5035080510
1 water, 2 CEE 32 A 5P, 2 protective contact sockets 16 A, incl. elcb + mcb	M5035080520

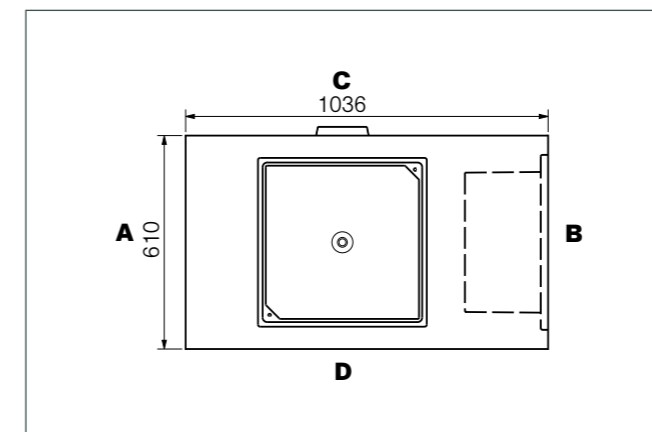
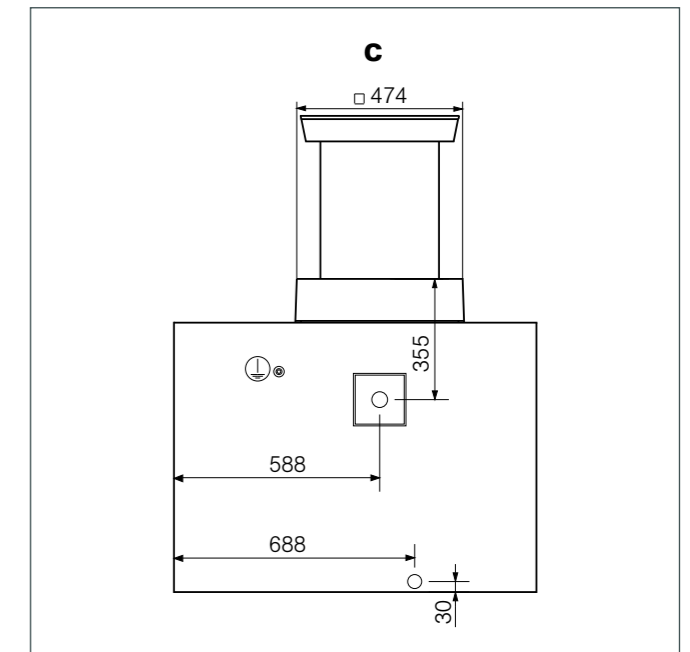
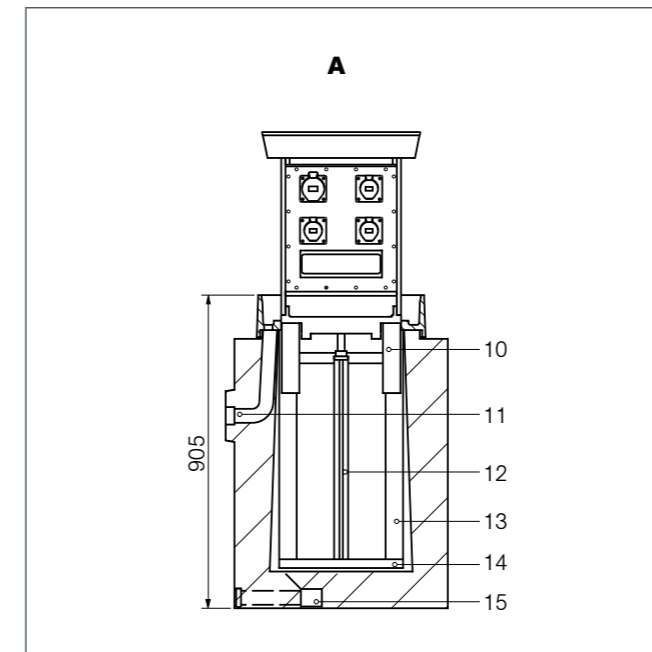
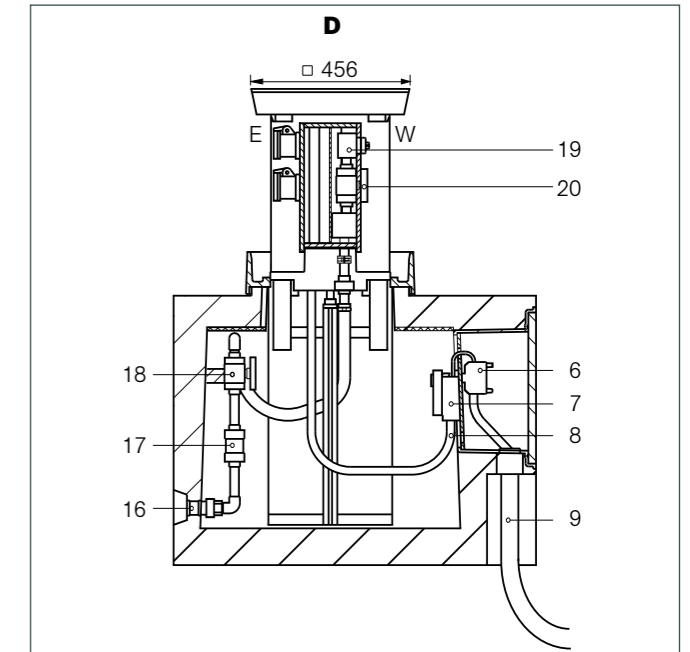
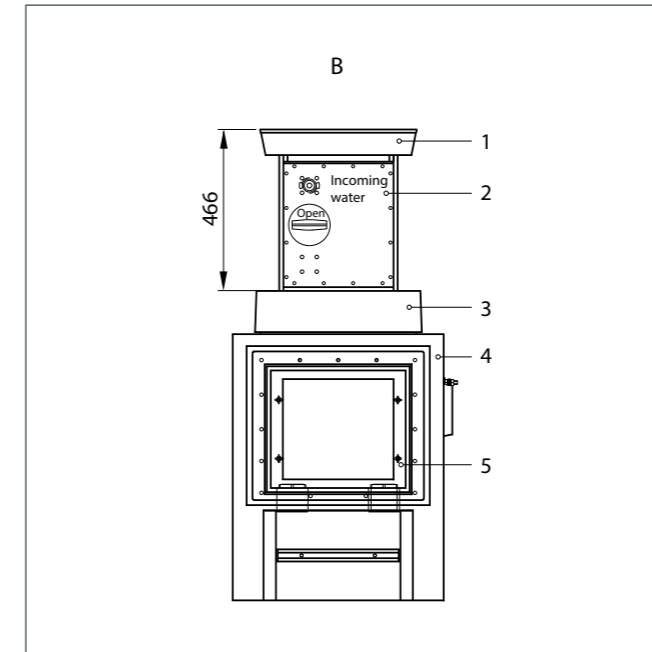
Each retractable supply post (hydrant) SE 50 consists of a standard set. Each set consists of the assembly groups: Concrete pit, pit insert, device column, cable connection module, cable bushing and two equipment plates. The standard set of the retractable supply post differs from the standard set of the hydrants in the concrete pit. This means also different costs.

The electric equipment can be combined with itself and with every other plate. The equipment plate for water can't be combined with itself. But it is possible to combine it with other electric equipment plates or with a blind plate.



- 1 - Cover
- 2 - Case of insulated material
- 3 - Cover support
- 4 - Concrete shaft
- 5 - Cable connection box
- 6 - Connection clamps
- 7 - Pre-fuse
- 8 - Flexible connection cable
- 9 - Lead in cable (to prov. before inst.)
- 10 - Guide
- 11 - Surface water drainage
- 12 - Lifting mechanism
- 13 - Frame of guide
- 14 - Bottom support
- 15 - Drainage of shaft

Measures in mm



- 1 - Cover
- 2 - Case of insulated material
- 3 - Cover support
- 4 - Concrete shaft
- 5 - Cable connection box
- 6 - Connection clamps
- 7 - Pre-fuse
- 8 - Flexible connection cable
- 9 - Lead in cable (to prov. before inst.)
- 10 - Guide
- 11 - Surface water drainage
- 12 - Lifting mechanism
- 13 - Frame of guide
- 14 - Traverse
- 15 - Drainage of shaft
- 16 - Fresh water brass socket 1"
- 17 - Backflow preventer
- 18 - Fresh water shut off valve into shaft
- 19 - Fresh water high speed clutch 1/2"

Measures in mm



Equipment options



Technical data	SE56	SEH56
Protection stages:	IP 44 for electrical sockets IP 65 for distributors	
Protection equipment:	earth contact class 1	
Mains voltage/frequency:	230/400V, 50 Hz	
Kind of voltage:	TN-S system	
Connection value:	approx. 50 kW	approx. 40 kW
Feed in cable approx. permissible:	5 x 50 mm ²	5 x 16 mm ²
Concrete shaft + shaft insert:	650 kg	710 kg
Device column equipped:	75 kg	
Concrete shaft (H x W x D):	965 x 632 x 928 mm	965 x 632 x 1084 mm
Cover support (incl. sealing compound):	110 mm	
Installation depth:	1075 mm	
Extendible height:	520 mm	
Space for pavement in cover:	50 mm	
Load capacity for the paved cover:	D 400, 40 t point load	
Lifting mechanism:	Thread spindle	
Sewage connections:	2 St. DN 40	

MSSE56+MSSEH56

Consisting of:

Concrete shaft

Supporting concrete shaft under the provisions of DIN 1045 - B 35 (for traffic loads under the provisions of DIN 1072, bridge class SLW 60) for a protected insertion of the retractable supply post into soil.

There are integrated:

- Cable connection box for the assembly of a connecting module
- Two cable lead throughs for the reception of an incoming cable
- C-rail for tension relief of the connection cable
- Thread-connection plug for the installation of the exterior earth contact
- Surface water drainage DN 40
- Drainage of shaft DN 40
- Additional for SEH56: sewage water connection DN 50
- Additional for SEH56: fresh water connection bushing 1"

Shaft insertion

System-oriented, metal insertion of corrosion resistant aluminium consisting of:

- Guide frame (corrosion resistant aluminium profiles) as sliding supports for the device column
- Cover support with sealing, pavement frame, drainage, open pipe for surface water drainage
- Bottom support with lifting mechanism (threaded-spindle, spindle-guide and spindle nut)

Device column

Extendable, horizontal case construction out of weather resistant PVC, with built-on shift cover of cast aluminium, built-in space of 50 mm for pavement. The case of insulated material (IP 55) is a self supporting construction and constructed as a rugged and shock resistant device. 2 sides (A+B) are provided for the equipment of the device. Lead-in by flexible connection cable 5 x 50 mm² by MSSE56 and 5 x 16 mm² by MSSEH56. The lifting mechanism with threaded spindle is located in the centre of the device column. Watertight opening of spindle drive through the lid. Self-regulating heating in the electrical operating room to protect from frost damage and condensation.

Electric device modules

The interior wiring of the devices and the feeding-in are arranged for the TN-S system. Wiring for other systems only after technical clarification and written contract.

Cable connection module KAM 50-3 for SE56

PVC device supporting base with series clamps, 5 P to feed in or slide on the supply cable and the leading-off cable (approx. 5 x 50 mm²), Pre-fuse NH 00 80 A, plug-clutch 80 A and strain relief for the flexible connection cable.

Cable leading on KDF 50-1 for SE56

Screwing sockets M 40 with shrink-hose for watertight leading of the connection cable .

Cable connection module KAM 16-2 for SEH56

PVC device supporting base with 1 series clamp 16 mm², 5 P to feed in or slide on the supply cable (approx. 5 x 25 mm²) and the leading-off cable (approx. 5 x 16 mm²) NH-00 pre-fuse 63 A, 3 P, plug-in connection 80 A, 5 P and tension relief for the flexible connection cable (5 x 6 mm²).

Cable leading on KDF 16-1 for SEH56

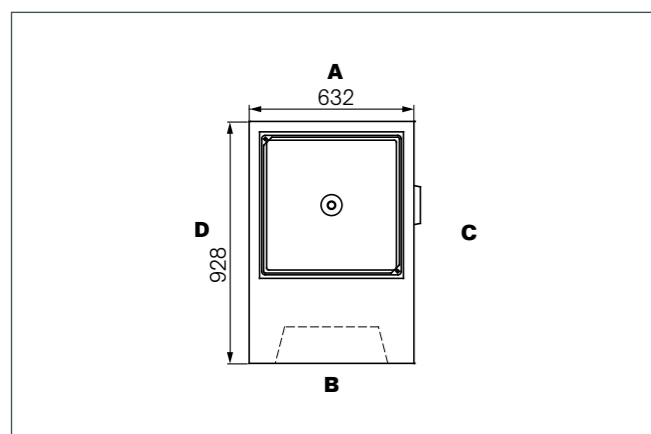
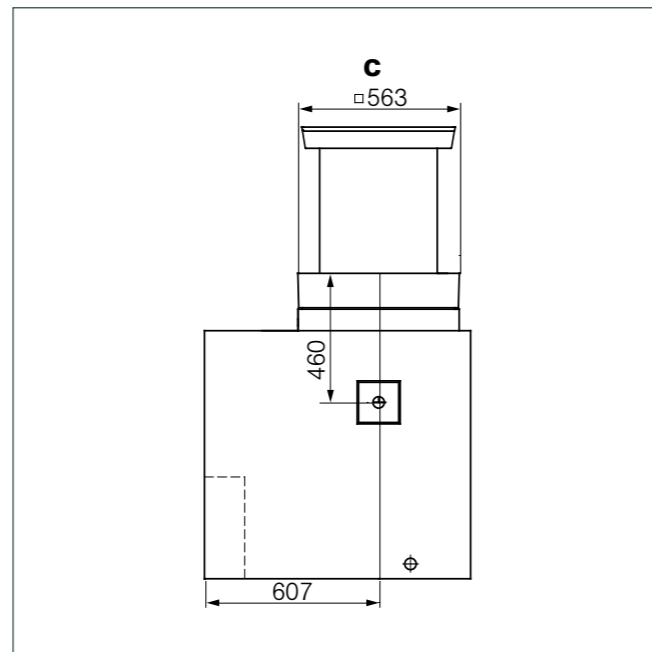
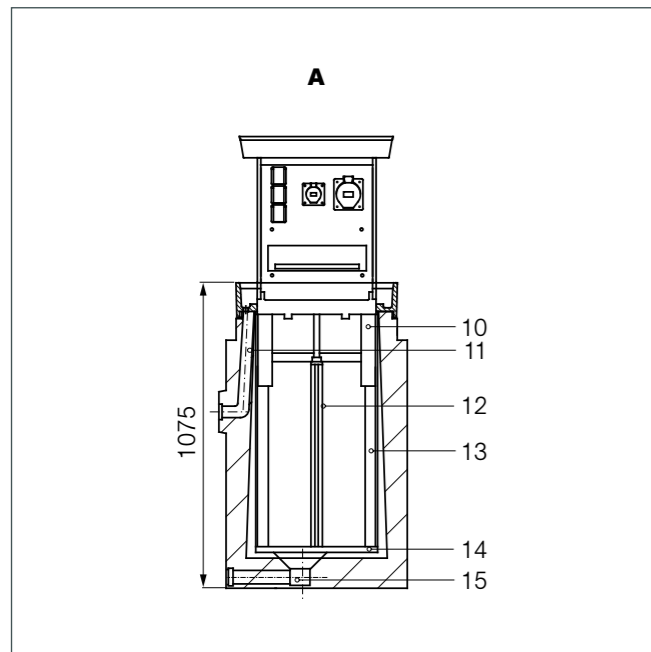
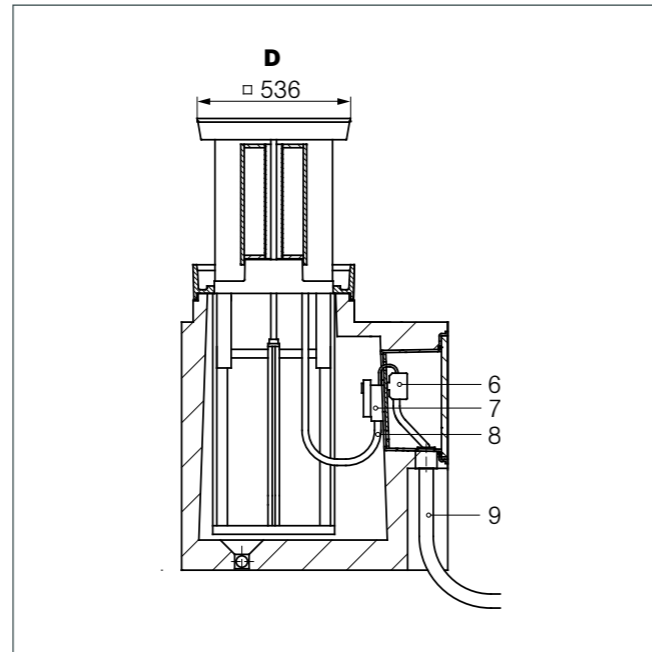
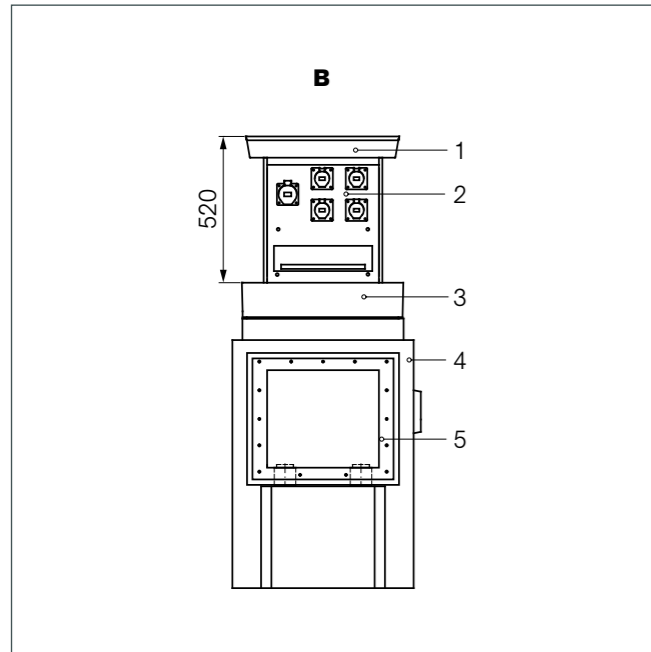
Screwing sockets M40 (d_i = 31 mm) with shrink-hose(d_i = 63 - 19 mm) for watertight leading of the connection cable (d_a = approx. 30 mm) and of the leading-off cable (d_a = approx. 30 mm).

SE 56 Equipment options	Order-No.
24 protective contact sockets 16 A, incl. elcb + mcb	M5035600010
16 CEE 16 A 3P	M5035600020
8 CEE 16 A 3P, 12 protective contact sockets 16 A, incl. elcb + mcb	M5035600030
2 Compressed air, 1 CEE 16 A 5P, 3 CEE 16 A 3P, 6 protective contact sockets 16 A, incl. elcb + mcb	M5035611130
2 Compressed air, 2 Daten, 1 CEE 16 A 5P, 3 CEE 16 A 3P, 6 protective contact sockets 16 A, incl. elcb + mcb	M5035611230
2 Daten, 4 ELA, 1 CEE 16 A 5P, 3 CEE 16 A 3P, 6 protective contact sockets 16 A, incl. elcb + mcb	M5035611330
2 CEE 16 A 5P, 20 protective contact sockets 16 A, incl. elcb + mcb	M5035612010
2 CEE 16 A 5P, 12 CEE 16 A 3P, incl. elcb + mcb	M5035612020
2 CEE 16 A 5P, 6 CEE 16 A 3P, 12 protective contact sockets 16 A, incl. elcb + mcb	M5035612030
4 CEE 16 A 5P, 15 protective contact sockets 16 A, incl. elcb + mcb	M5035614010
4 CEE 16 A 5P, 12 protective contact sockets 16 A, incl. elcb + mcb	M5035614020
4 CEE 16 A 5P, 5 CEE 16 A 3P, 8 protective contact sockets 16 A, incl. elcb + mcb	M5035614030
6 CEE 16 A 5P, 4 CEE 16 A 3P, 5 protective contact sockets 16 A, incl. elcb + mcb	M5035616030
2 CEE 32 A 5P, 2 CEE 16 A 5P, 5 CEE 16 A 3P, 8 protective contact sockets 16 A, incl. elcb + mcb	M5035632030
2 CEE 32 A 5P, 4 CEE 16 A 5P, 4 CEE 16 A 3P, 5 protective contact sockets 16 A, incl. elcb + mcb	M5035632040
1 CEE 63 A 5P, 1 CEE 32 A 5P, 1 CEE 16 A 5P, 5 CEE 16 A 3P, 8 protective contact sockets 16 A, incl. elcb + mcb	M5035661030
1 CEE 63 A 5P, 1 CEE 32 A 5P, 1 CEE 16 A 5P, 5 CEE 16 A 3P, 6 protective contact sockets 16 A, incl. elcb + mcb	M5035661050
1 CEE 63 A 5P, 1 CEE 32 A 5P, 2 CEE 16 A 5P, 5 CEE 16 A 3P, 6 protective contact sockets 16 A, incl. elcb + mcb	M5035661070
1 CEE 63 A 5P, 2 CEE 32 A 5P, 2 CEE 16 A 5P, 2 CEE 16 A 3P, 2 protective contact sockets 16 A, incl. elcb + mcb	M5035661080
2 CEE 63 A 5P, 2 CEE 16 A 5P, 3 CEE 16 A 3P, 3 protective contact sockets 16 A, incl. elcb + mcb	M5035662080
1 CEE 63 A 5P, 1 CEE 32 A 5P, 3 CEE 16 A 5P, 2 CEE 16 A 3P, 3 protective contact sockets 16 A, incl. elcb + mcb	M5035665300

SEH56 Equipment options	Order-No.
2 fresh water, 12 protective contact sockets 16 A, incl. elcb + mcb	M5035682010
2 fresh water, 8 CEE 16 A 3P, incl. elcb + mcb	M5035682020
2 fresh water, 5 CEE 16 A 3P, 6 protective contact sockets 16 A, incl. elcb + mcb	M5035682030
2 fresh water, 1 CEE 32 A 5P, 1 CEE 16 A 5P, 5 CEE 16 A 3P, 2 protective contact sockets 16 A, incl. elcb + mcb	M5035682040
2 fresh water, 1 data, 1 CEE 32 A 5P, 1 CEE 16 A 5P, 5 CEE 16 A 3P, 2 protective contact sockets 16 A, incl. elcb + mcb	M5035682070
2 fresh water, 1 compressed air, 1 CEE 32 A 5P, 1 CEE 16 A 5P, 5 CEE 16 A 3P, 2 protective contact sockets 16 A, incl. elcb + mcb	M5035682100
2 fresh water, 1 water meter, 1 CEE 32 A 5P, 1 CEE 16 A 5P, 5 CEE 16 A 3P, protective contact sockets 16 A, incl. elcb + mcb	M5035682110
3 fresh water, 1 CEE 32 A 5P, 1 CEE 16 A 5P, 5 CEE 16 A 3P, 2 protective contact sockets 16 A, incl. elcb + mcb	M5035683100
3 fresh water, 1 compressed air, 1 CEE 32 A 5P, 1 CEE 16 A 5P, 5 CEE 16 A 3P, 2 protective contact sockets 16 A, incl. elcb + mcb	M5035683110
3 fresh water, 1 water meter, 1 CEE 32 A 5P, 1 CEE 16 A 5P, 5 CEE 16 A 3P, 2 protective contact sockets 16 A, incl. elcb + mcb	M5035683120
2 water, 1 sewage water, 1 CEE 63 A 5P, 1 CEE 16 A 5P, 3 protective contact sockets 16 A, incl. elcb + mcb	M5035690010
2 water, 1 sewage water, 1 water meter, 1 CEE 63 A 5P, 1 CEE 16 A 5P, 3 protective contact sockets 16 A, incl. elcb + mcb	M5035690020

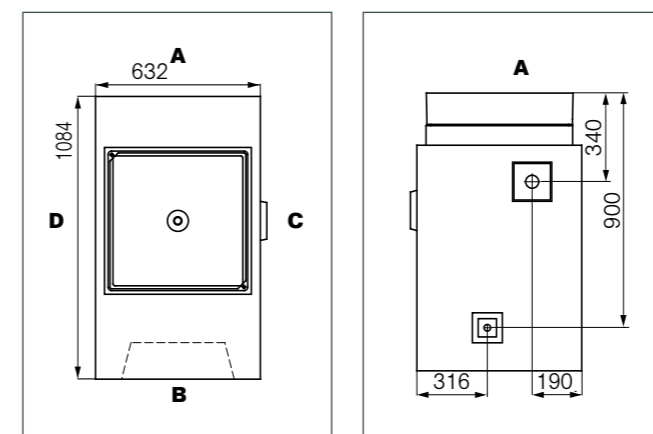
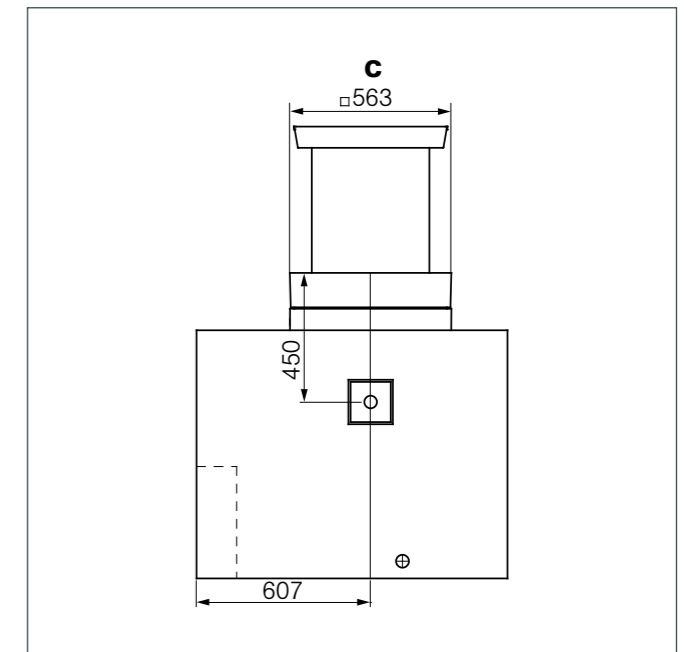
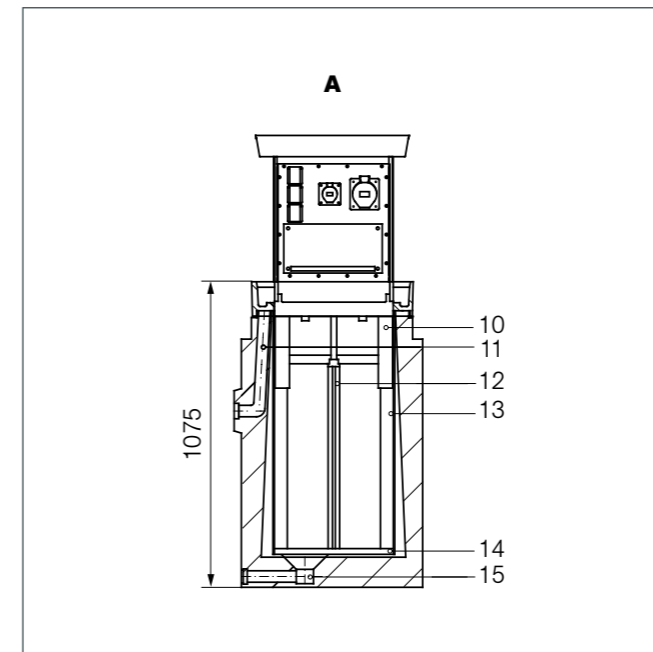
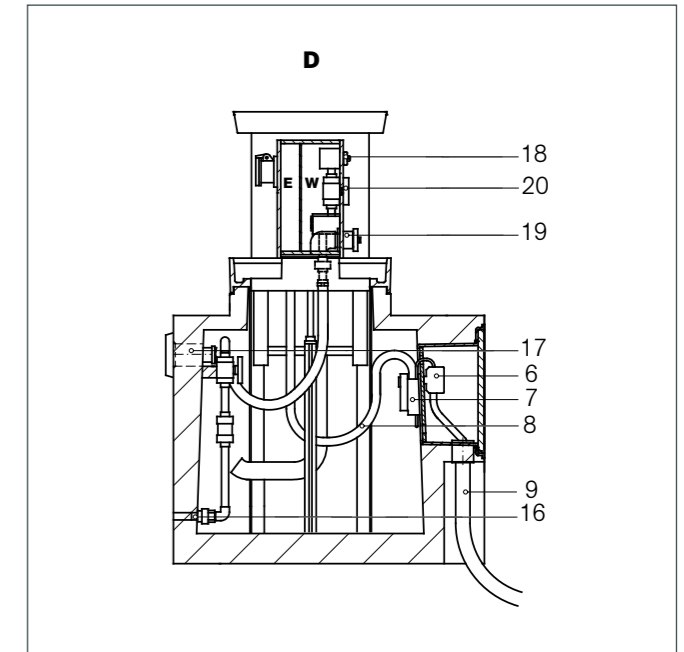
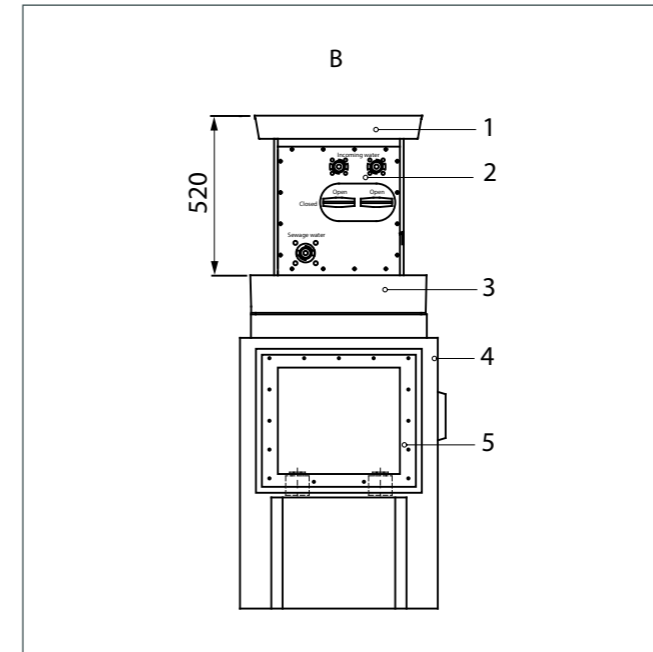
Each retractable supply post (hydrant) SE 56 consists of a standard set. Each set consists of the assembly groups: Concrete pit, pit insert, device column, cable connection module, cable bushing and two equipment plates. The standard set of the retractable supply post differs from the standard set of the hydrants in the concrete pit. This means also different costs.

The electric equipment can be combined with itself and with every other plate. The equipment plate for water can't be combined with itself. But it is possible to combine it with other electric equipment plates or with a blind plate.



- 1 - Cover
- 2 - Case of insulated material
- 3 - Cover support
- 4 - Concrete shaft
- 5 - Cable connection box
- 6 - Connection clamps
- 7 - Pre-fuse
- 8 - Flexible connection cable
- 9 - Lead in cable (to prov. before inst.)
- 10 - Guide
- 11 - Surface water drainage
- 12 - Lifting mechanism
- 13 - Frame of guide
- 14 - Bottom support
- 15 - Drainage of shaft

Measures in mm



- 1 - Cover
- 2 - Case of insulated material
- 3 - Cover support
- 4 - Concrete shaft
- 5 - Cable connection box
- 6 - Connection clamps
- 7 - Pre-fuse
- 8 - Flexible connection cable
- 9 - Lead in cable (to prov. before inst.)
- 10 - Guide
- 11 - Surface water drainage
- 12 - Lifting mechanism
- 13 - Frame of guide
- 14 - Traverse
- 15 - Drainage of shaft
- 16 - Fresh water brass socket 1"
- 17 - Sewage tube socket DN 50
- 18 - Fresh water high speed clutch 1/2"
- 19 - Sewage high speed clutch (to prov. before inst.)
- 20 - Fresh water shut off valve

Measures in mm

With patented cable-outlet-flap and rain water lock



Equipment options

Equipment Side A

1 attached electrical sockets CEE 32 A, 3P+N+E, 6 h, 400V, 50 Hz, IP 44, rt
 2 attached electrical sockets CEE 16 A, 3P+N+E, 6 h, 400V, 50 Hz, IP 44, rt
 7 protective contact sockets 16 A, 2P+E, 230V, 50 Hz, bl

Equipment Side B

2 distributor (13 partitions) with transparent cover, (IP 55) robust shock-resistant construction
 1 electric leakage circuit breaker elcb 63 A, 30 mA, 4P
 1 electric leakage circuit breaker elcb 40 A, 30 mA, 4P
 1 miniature circuit breaker mcb 32 A, B, 3 P
 7 miniature circuit breaker mcb 16 A, B, 1 P
 1 miniature circuit breaker mcb 2 A, C, 1 P (for heating)



Technical data	SE50KA
Protection stages:	IP 44 for electrical sockets IP 65 for distributors
Protection equipment:	earth contact class 1
Mains voltage/frequency:	230/400V, 50 Hz
Kind of voltage:	TN-S system
Connection value:	approx. 30 kW
Feed in cable approx. permissible:	5 x 16 mm ²
Concrete shaft + shaft insert:	580 kg
Device column equipped:	50 kg
Concrete shaft (HxWxD):	795x610x885 mm
Cover support (incl. sealing compound):	110 mm
Installation depth:	905 mm
Extendible height:	466 mm
Space for pavement in cover:	50 mm
Load capacity for the paved cover:	C 250, 25 t point load
Lifting mechanism:	Thread spindle
Sewage connections:	2 St. DN 40
Article description	MSSE50KA-Sta-01
Order-No.	M5035130010

MSSE50KA



Consisting of:

Concrete shaft

Supporting concrete shaft under the provisions of DIN 1045 - B 35 (for traffic loads under the provisions of DIN 1072, bridge class SLW 60) for a protected insertion of the retractable supply post into soil.

There are integrated:

- Cable connection box for the assembly of a connecting module (KAM)
- Two cable lead throughs for the reception of an incoming cable (KDF)
- 1 cable terminal box for the rigid connection cable to the internal flexible connection cable (5x6 mm²), incl. C-rail for tension relief of the connection cable
- Thread-connection plug for the installation of the exterior earth contact
- 2 DN40-drain pipes for connection to the sewage system:
- Surface water drainage sideways in the shaft
- Shaft drainage in the bottom of the shaft

Shaft insertion

Metal insertion of corrosion resistant aluminium consisting of:

- Guide frame (corrosion resistant aluminium profiles) as sliding supports for the device column
- Cover support with sealing, pavement frame, drainage, open pipe for surface water drainage
- Bottom support with lifting mechanism (thread-spindle, spindle-guide and spindle nut)

Device column

Horizontal draw out case construction of weather resistant PVC with built on shift cover of cast aluminium, built-in space of 50mm for pavement with cable-outlet and rain water lock.

The case of insulated material (IP 55) is a self supporting construction and constructed as a rugged and shock resistant device. 2 sides (A + B) are provided for the equipment of the device. Lead-in can be plugged by flexible connection cable 5 x 16 mm². The lifting mechanism with threaded spindle is located in the centre of the device column. Watertight opening of spindle drive through the cover. Self-regulating heating in the electrical operating room to protect from frost damage and condensation.

Electric device moduls

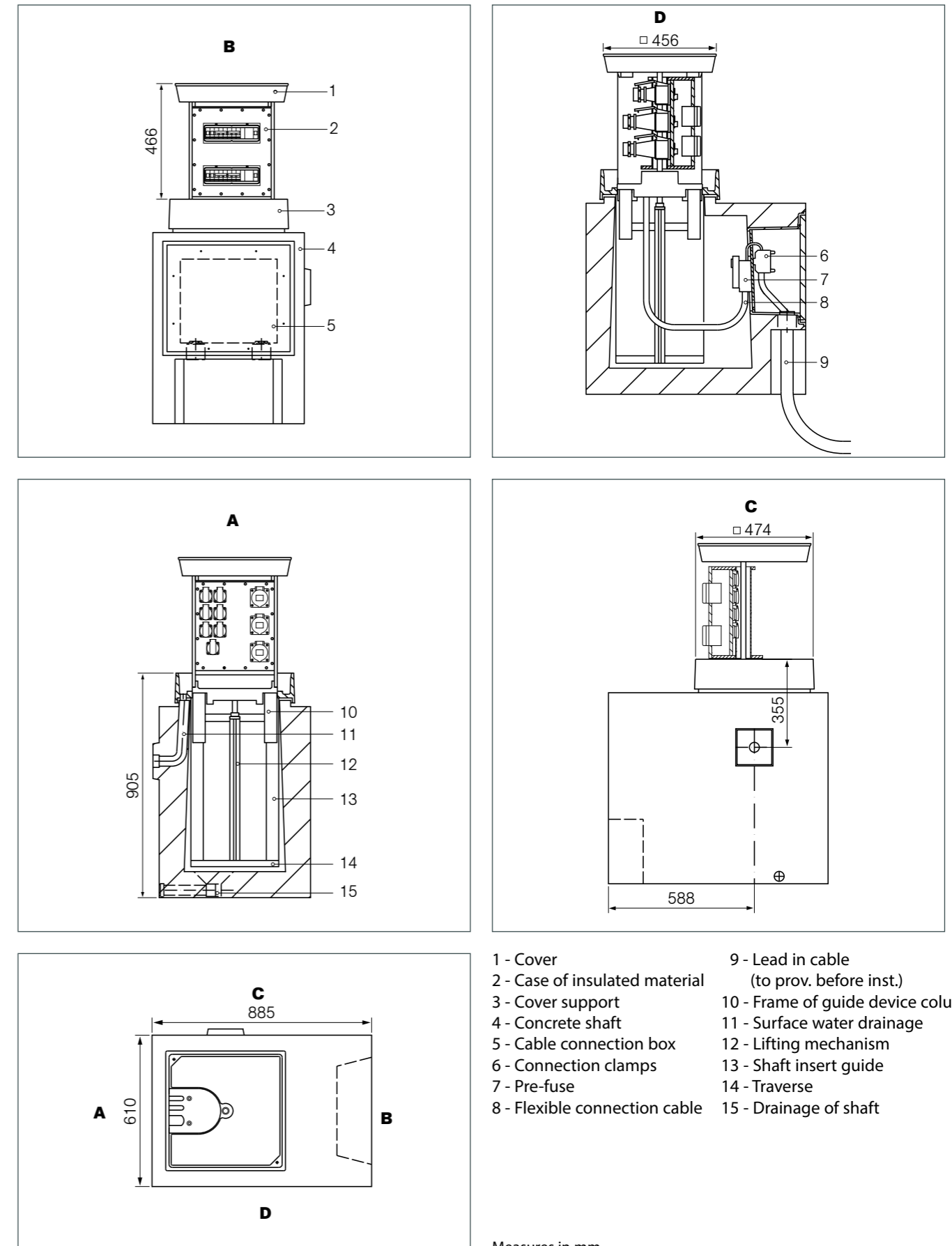
The interior wiring of the devices and the feeding-in are arranged for the TN-S system according to a wiring diagram. Wiring for other systems only after technical clarification and written contract.

Cable connection moduls KAM 16-2

PVC device supporting base with 1 series clamp 16 mm², 5 P to feed in or slide on the supply cable (approx. 5 x 25mm²) and the leading-off cable (approx. 5 x 16 mm²) NH-00 pre-fuse 80 A, plug-in connection 80 A and tension relief for the flexible connection cable (5 x 16 mm²).

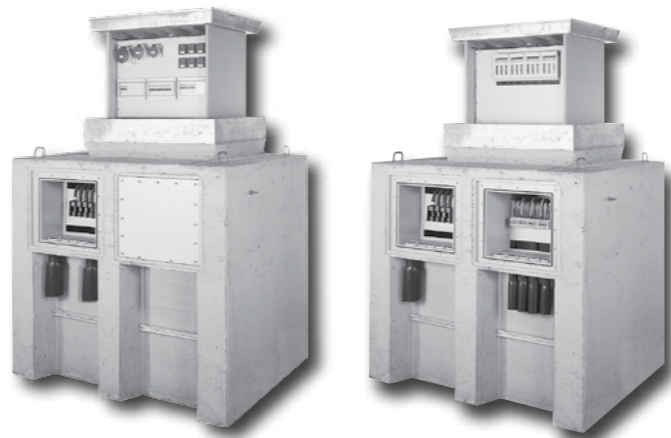
Cable leading on KDF 16-1

2 Screwing sockets M40 (di = 31 mm) with shrink-hose (di = 63-19 mm) for watertight leading of the connection cable (da = approx. 30 mm) and of the leading-off cable (da = approx. 30 mm).



- 1 - Cover
- 2 - Case of insulated material (to prov. before inst.)
- 3 - Cover support
- 4 - Concrete shaft
- 5 - Cable connection box
- 6 - Connection clamps
- 7 - Pre-fuse
- 8 - Flexible connection cable
- 9 - Lead in cable
- 10 - Frame of guide device column
- 11 - Surface water drainage
- 12 - Lifting mechanism
- 13 - Shaft insert guide
- 14 - Traverse
- 15 - Drainage of shaft

Measures in mm



Equipment options

MSSE80+MSSV80

Technical data	SE80	SV80
Protection stages:	IP 44 for electrical sockets	
		IP 55 for distributor
Protection equipment:		Earth contact class 1
Mains voltage/frequency:		230/400V, 50 Hz
Kind of voltage:	TN-S system	TN-C system
Connection value:	approx. 130 kW	
Feed in cable approx. permissible:	5 x 150 mm ²	4 x 150 mm ²
Concrete shaft + shaft insert:	2120 kg	
Device column equipped:	80 kg	
Concrete shaft (H x W x D):	1350 x 1400 x 1110 mm	
Cover support (incl. sealing compound):	130 mm	
Installation depth:	1480 mm	
Extendible height::	590 mm	
Space for pavement in cover:	50 mm	
Load capacity for the paved cover:	C 250, 25 t point load	
Lifting mechanism:	Thread spindle	
Sewage connections:	2 St. DN 40	

Equipment options	Order-No.
SE80	
1 CEE 125A 5P, 1 CEE 63A 5P, 2 CEE 32A 5P, 3 CEE 16A 5P, 12 protective contact sockets 16A, incl. elcb + mcb	M5038070010
1 CEE 125A 5P, 1 CEE 63A 5P, 2 CEE 32A 5P, 3 CEE 16A 5P, 12 CEE 16A 3P, incl. elcb + mcb	M5038070030
2 CEE 63A 5P, 2 CEE 32A 5P, 4 CEE 16A 5P, 6 CEE 16A 3P, 6 protective contact sockets 16A, incl. elcb + mcb	M5038070040
SV80	
4 NH00 125A	M5038070020

Consisting of:

Concrete shaft

Supporting concrete shaft under the provisions of DIN 1045 - B 35 (for traffic loads under the provisions of DIN 1072, bridge class SLW 60) for a protected insertion of the retractable supply post into soil.

There are integrated:

- 2 Cable connection boxes for the assembly of a connecting modul
- Two cable leadings per cable connection box for the reception of every cable feed-through in the case of SE80
- 2 cable lead-throughs for the reception of an incoming cable bei SV80
- C-rail for tension relief of the connection cable
- Thread-connection plug for the installation of the exterior earth contact
- Surface water drainage DN 40
- Shaft drainage DN 40

Shaft insertion

Metal insertion of corrosion resistant aluminium consisting of:

- Guide frame (corrosion resistant aluminium profiles) as sliding supports for the device column
- Cover support with sealing, pavement frame, drainage, open pipe for surface water drainage
- Bottom support with lifting mechanism (thread-spindle, spindle-guide and spindle nut)

Device column

Extendable, horizontal case construction out of weather resistant PVC, with built-on shift cover of cast aluminium, built-in space for pavement. The case of insulated material (IP 55) is a self supporting construction and constructed as a rugged and shock resistant device. By SE80 are 2 sides (A + B), by SV80 one side provided for the equipment of the device. Lead-in by a flexible connection cable. The lifting mechanism with threaded spindle is located in the centre of the device column. Watertight opening of spindle drive through the lid. Self-regulating heating in the electrical operating room to protect from frost damage and condensation in case of SE80.

Electric device moduls

The interior wiring of the devices and the feeding-in are arranged with a supply pipe up to 5 x 70 mm² by SE80 for the TN-S system, by SV80 for the TN-C system (as per diagram of connections). Wiring for other systems only after technical clarification and written contract.

Cable connection module KAM 150-9 for SE80

PVC device supporting base with distributing bar-derivating post 70-150 mm² to feed in or slide on the supply cable. Pre-fuse NH 01 200 A and tension relief for the flexible connection cable.

Cable leading on KDF 150-1 for SE80

Screwing sockets PG 63 with shrink-hose for watertight leading in of the connection cable and of the leading-off cable.

Cable connection module KAM 150-2 for SV80

PVC device supporting base with distributing bar-derivating post 70-150 mm² for feeding in or sliding on of lead-in cable and tension relief for the flexible connection cable.

Cable leading on KDF 150-2 for SV80

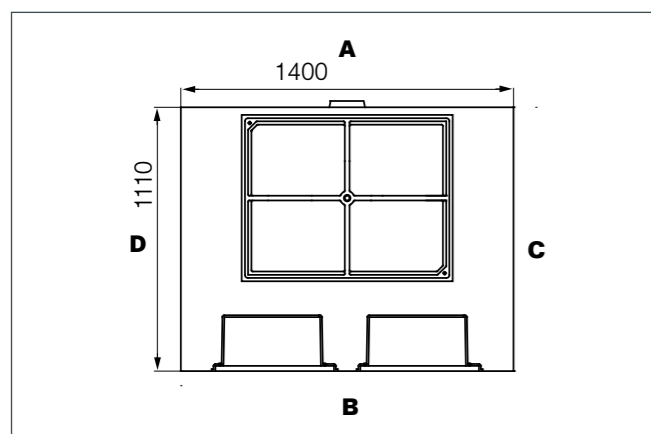
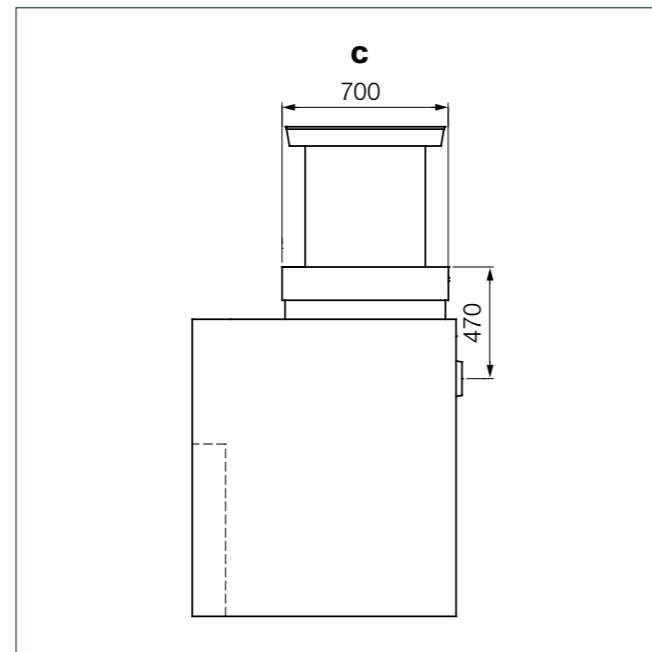
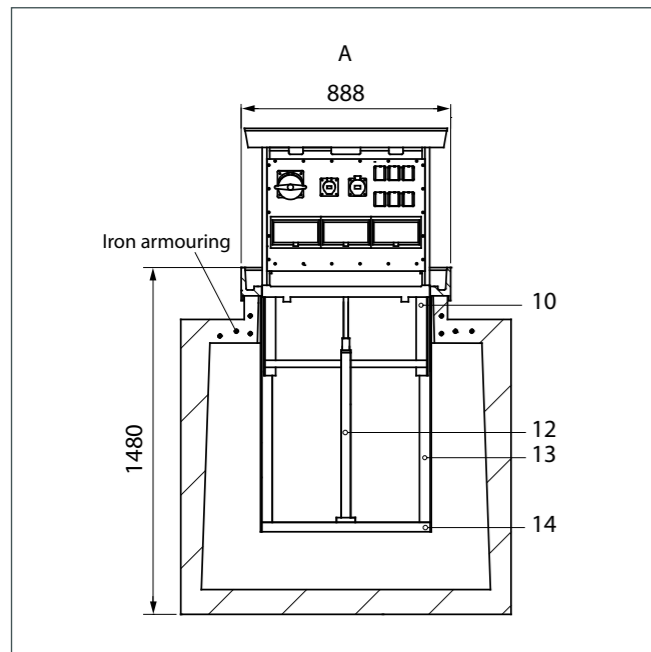
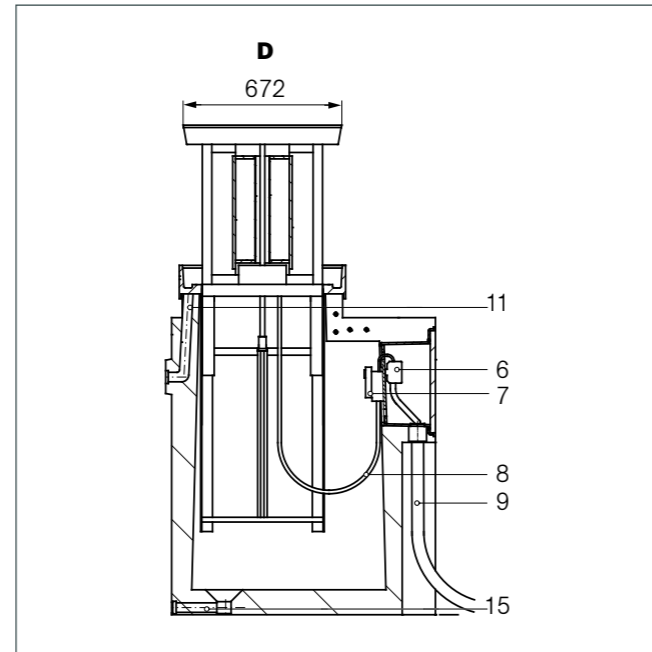
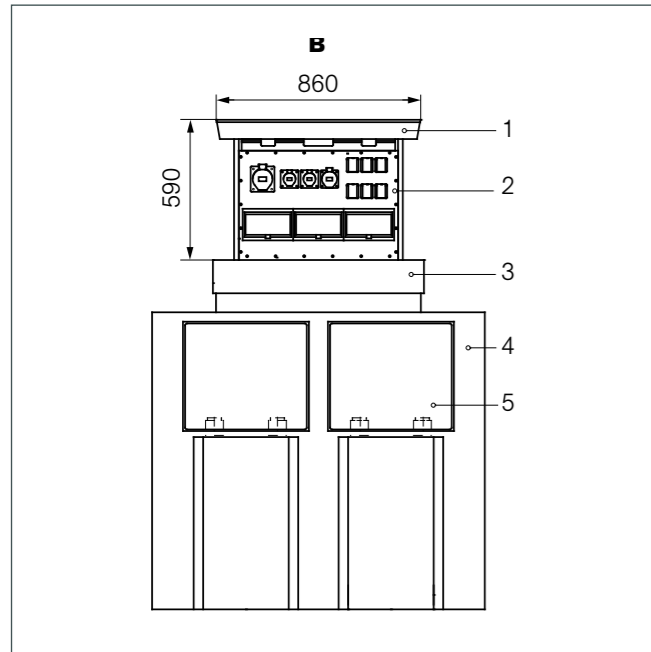
Screwing sockets PG 48 with shrink-hose for watertight lead-in of the connection cable

Cable connection module KAM 50-4 for SV80

PVC-device support bottom with series clamps 50 mm² for connection of 4 pieces lead-off cables with tension relief for the flexible connection cables.

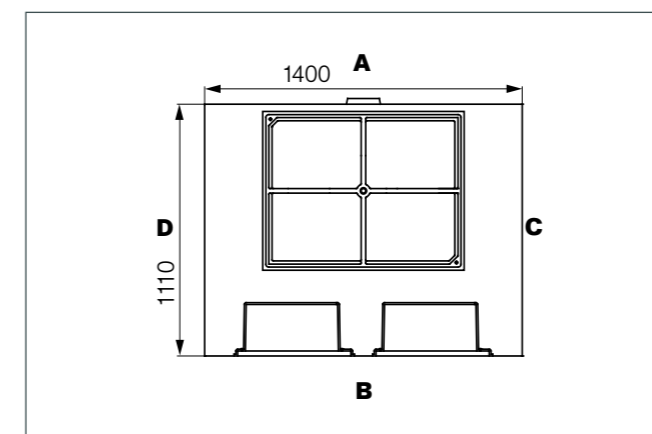
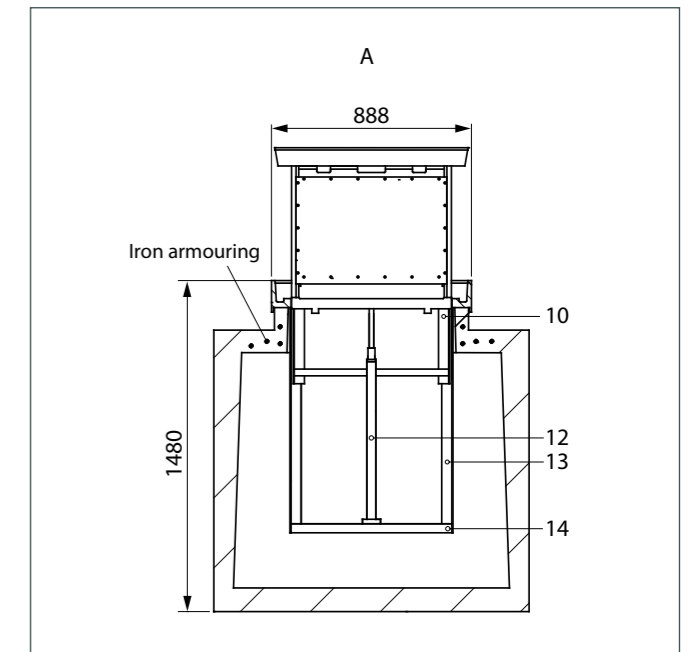
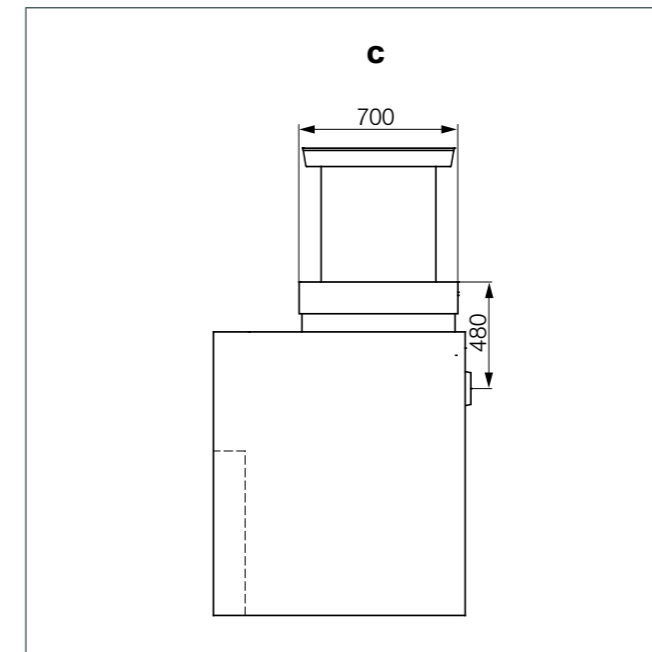
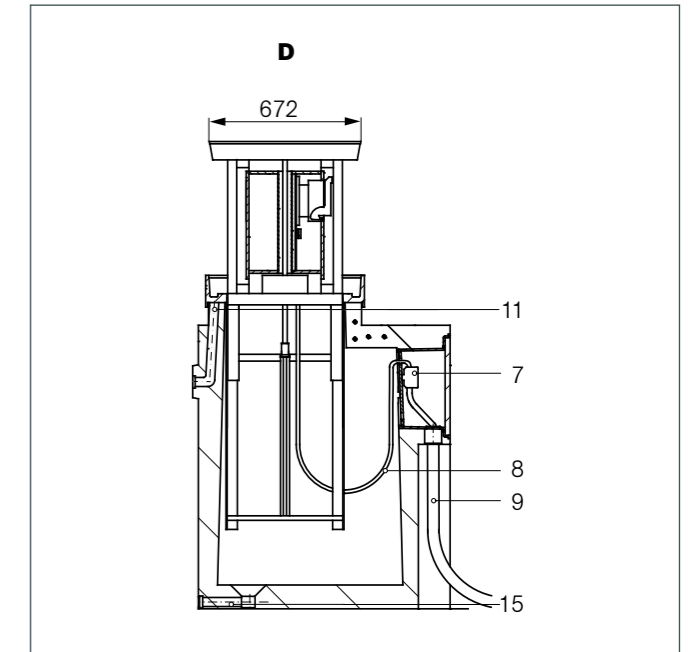
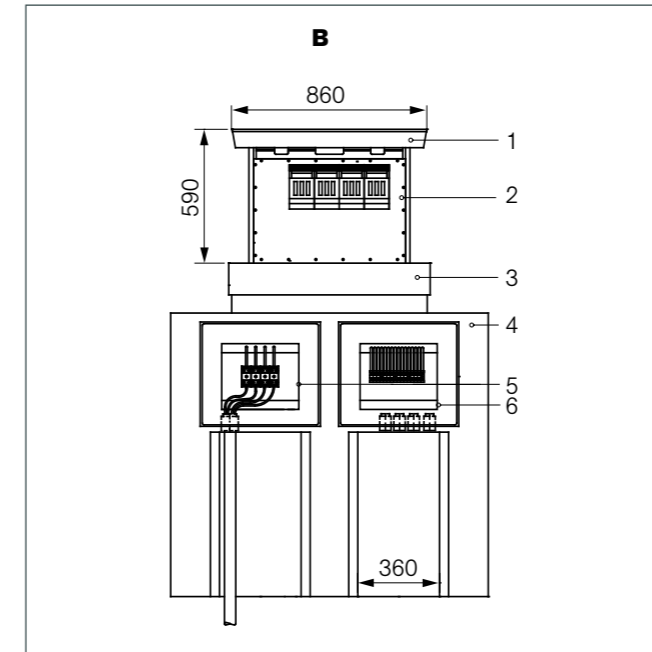
Cable leading on KDF 50-4 for SV80

4 pieces of screw-sleeves PG 36 with shrink-hose for watertight lead-in of the lead-off cable.



- | | |
|--------------------------------|---|
| 1 - Cover | 9 - Lead in cable (to prov. before inst.) |
| 2 - Case of insulated material | 10 - Guide |
| 3 - Cover support | 11 - Surface water drainage |
| 4 - Concrete shaft | 12 - Lifting mechanism |
| 5 - Cable connection box | 13 - Frame of guide |
| 6 - Connection clamps | 14 - Bottom support |
| 7 - Pre-fuse | 15 - Drainage of shaft |
| 8 - Flexible connection cable | |

Measures in mm



- | | |
|--------------------------------|---|
| 1 - Cover | 9 - Lead in cable (to prov. before inst.) |
| 2 - Case of insulated material | 10 - Guide |
| 3 - Cover support | 11 - Surface water drainage |
| 4 - Concrete shaft | 12 - Lifting mechanism |
| 5 - Cable connection box (K1) | 13 - Frame of guide |
| 6 - Cable connection box (K2) | 14 - Bottom support |
| 7 - Connection clamps | 15 - Drainage of shaft |
| 8 - Flexible connection cable | |

Measures in mm

Technology that you can rely on

Moser Systemelektrik GmbH are specialists for retractable supply units and customer-specific retractable supply posts.

The continuous further development of products and innovations guarantees that products remain state-of-the-art. Many towns and large-scale industrial firms who are already profiting from extensive know-how and the wide variety of models have become aware of this fact.

Retractable supply towers for installation in the ground without a concrete shaft.

These are particularly suitable for use in industry, factory buildings, exhibition or sports halls as well as in festival halls and car parks.

The retractable supply towers for installing in the ground are available in four standard sizes, SED30, SED50, SED56 and SED80 – so that the right solution can be found for every customer.

Flexible supply from the ground

In many production/assembly halls and warehouse productions depending on orders contracted or quick batch changes – in other words modern working models – are replacing the pre-defined workplace with its supply pipelines.

„Supply towers“ for electricity, data lines, water etc., that are lowered into the ground and that can be raised by simply turning a crank, enable flexibility that is in keeping with the times. Once the supply tower is lowered into the ground, devices, vehicles and units have freedom of movement.

Reassuring for every security officer, a feast for the eye of the professional trade association and a contribution to the full concentration of all staff at work.

The direct supply at the workplace renders cables and lines above ground superfluous and avoids dangerous obstructions and stumbling hazards.

Fire and water have no chance

Moser retractable towers are designed so that surface fluids, e.g. oil, water etc. are routed down into a collection system on site. Self-regulating switch cabinet heating prevents condense water from forming on the device tower so that the shaft compartment remains dry and ready for use.

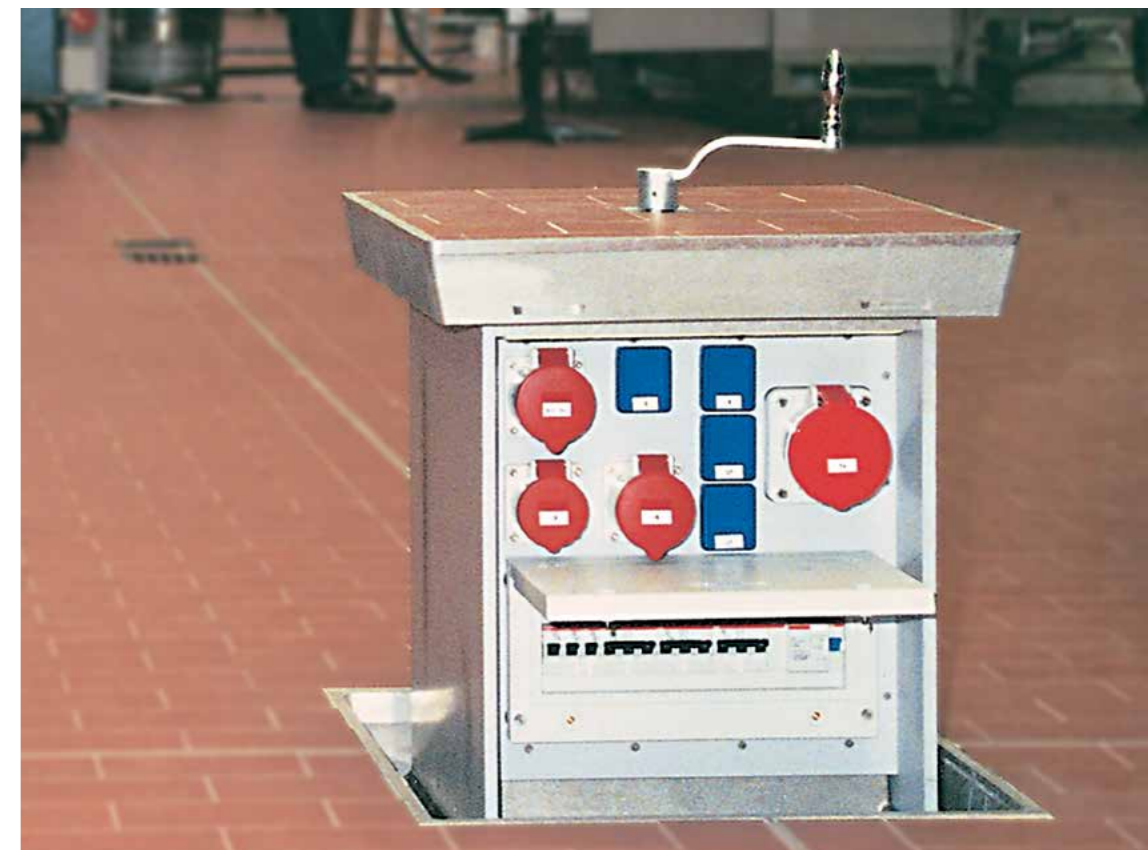
The retractable supply posts manufactured by Moser Systemelektrik can be supplied with a fireproof casing that is fixed underneath the concrete floor.

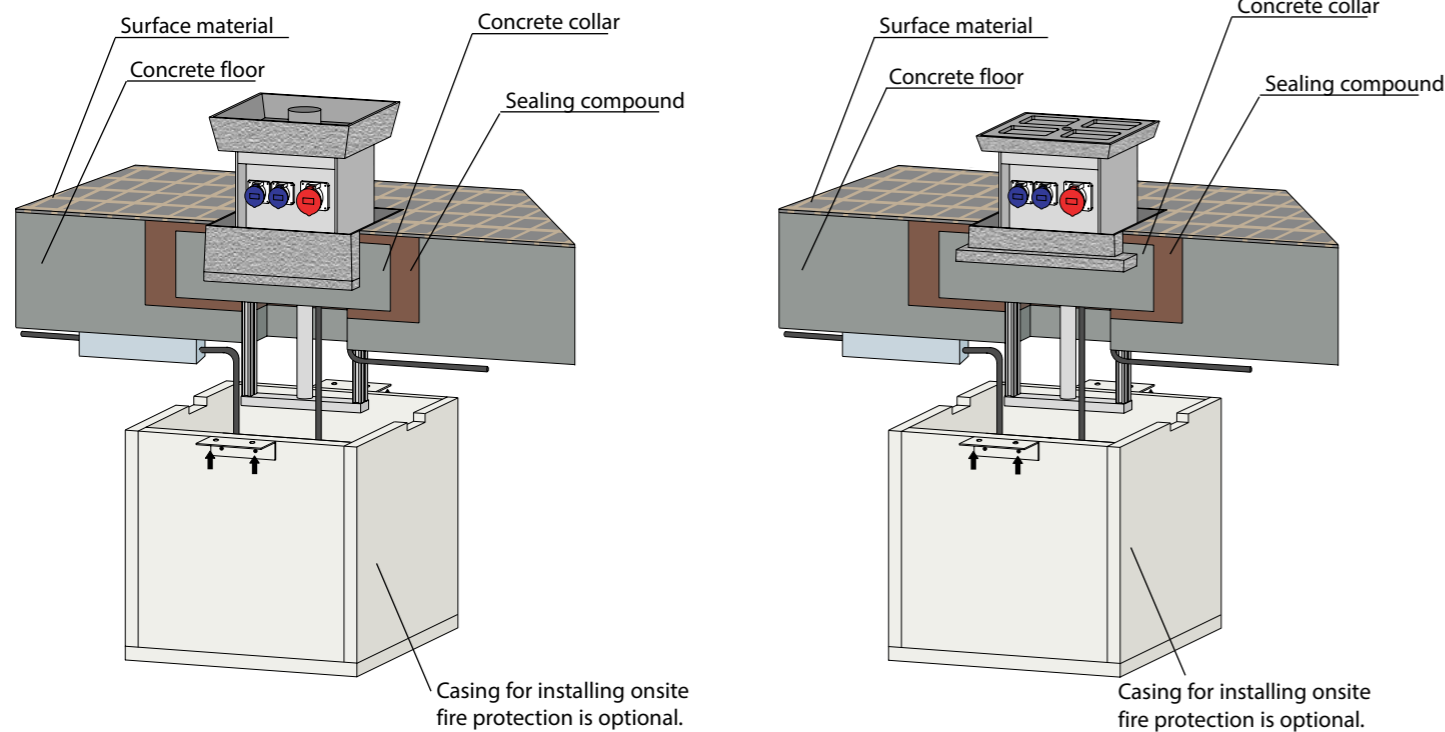
Planning for trouble-free installation

In order to ensure trouble-free installation and smooth operation, careful planning is necessary.

Observe the following during initial planning:

- The solution without a concrete shaft is only possible when the substructure is easily accessible, otherwise the retractable supply tower must be installed with a concrete shaft. (Information will be supplied on request).
- The capacity limit of the units, so that they can be adequately equipped for future use. The capacity limit also determines the size of the retractable supply towers and is thus of importance for preparing installation.
- The installation solution (depending on the construction conditions: floor height!), so that installation runs smoothly.
- External connections are possible.





MSSED30AN+MSSED30IN

Consisting of:

Concrete collar

Concrete collar moulded and cast on site in which contains the lid bearing of die-cast aluminium. Concrete collar that is adapted in dimension to the recess in the ground for the retractable supply post and which enables simple concreting and levelling on site in conformance with the trade.

Shaft insertion

Metal insertion of corrosion resistant aluminium consisting of:

- Cage guide of corrosion-resistant aluminium profiles in the form of rails and ball rollers for device column..
- Cover support with sealing, pavement frame, drainage, open pipe for surface water drainage.
- Bottom support with lifting mechanism (thread spindle, spindle-guide and spindle nut).

Device column

Horizontal draw out case construction of weather resistant PVC with built on shift cover of cast aluminium, built-in space for pavement. The case of insulated material (IP55) is a self supporting construction and constructed as a rugged and shock resistant device. 2 sides (A+B) are provided for equipment of the device. Lead-in can be plugged by flexible connection cable 5 x 6 mm². The lifting mechanism with thread spindle is located in the centre of the device column. For the operating by crank handle the spindle is watertight passed through the cover.

Electric device modules

The interior wiring of the devices and the feeding-in are arranged for the TN-S system. Wiring for other systems only after technical clarification and written contract.

Side A:

- 1 distribution module with transparent cover for 10 partitions
- 1 elcb 40 A, 4P, 30 m A
- 1 mcb 16 A, B, 3P
- 2 mcb 1 A, B, 1P
- 1 mcb 2 A, C, 1P

Side B:

- 1 attached electrical outlet CEE 16 A, 5P
- 2 electrical earth outlets 16 A

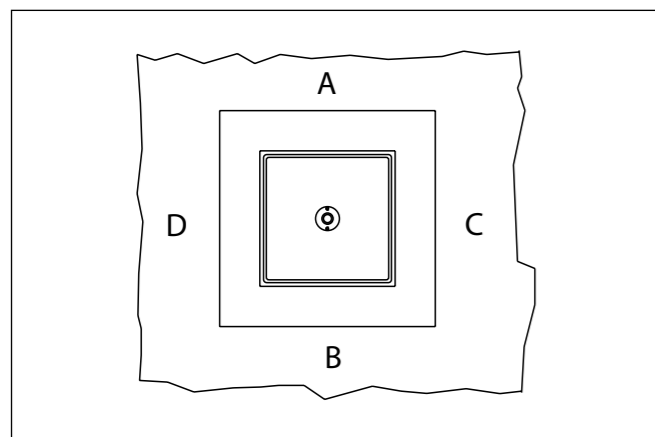
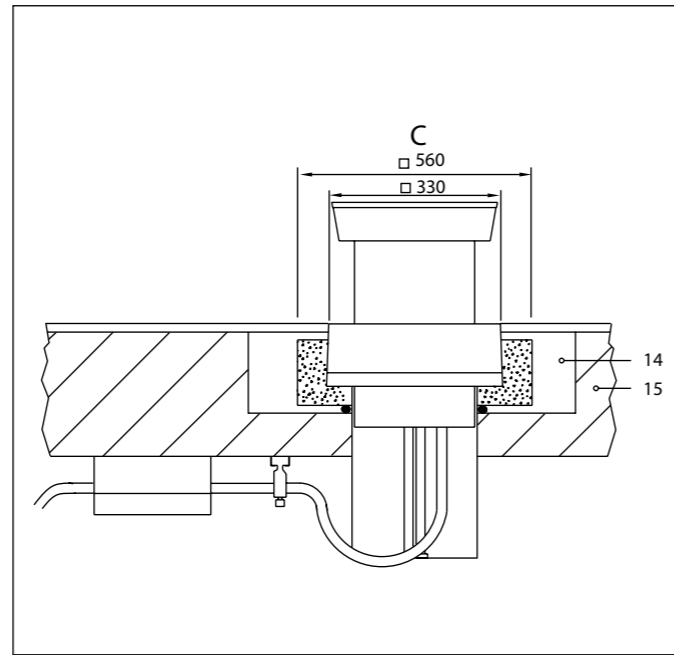
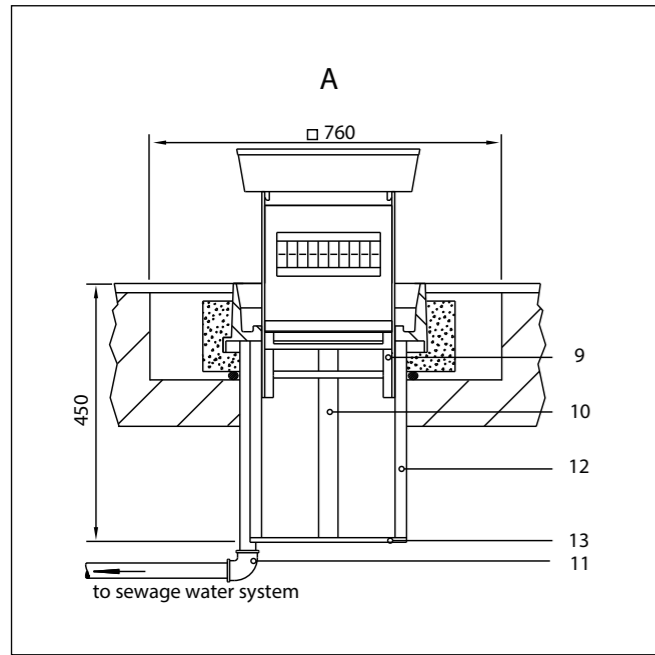
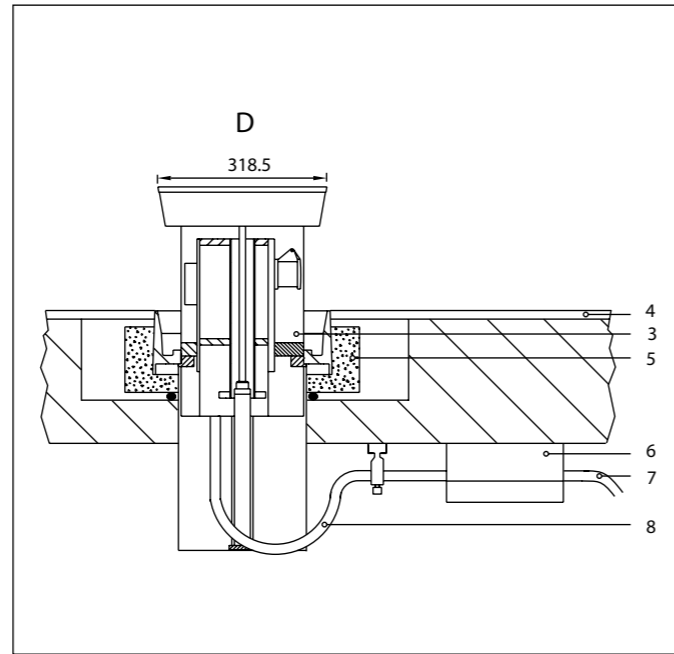
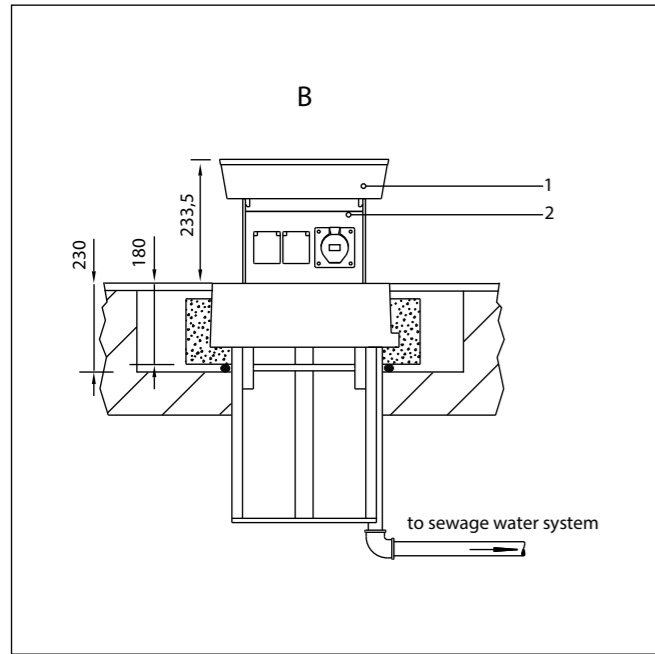
Cable connection box

Cable connection box with 35A-plug-connector incl. lead in cable (NYY-I 5 x 6 mm²), approx. 2 m.

Casing for attaching fire protection on site (optional)

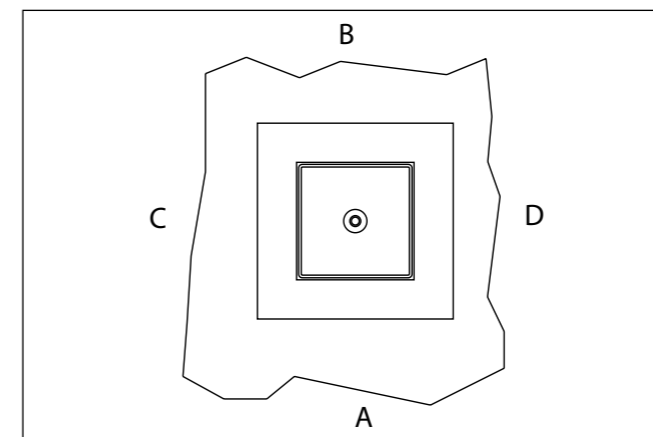
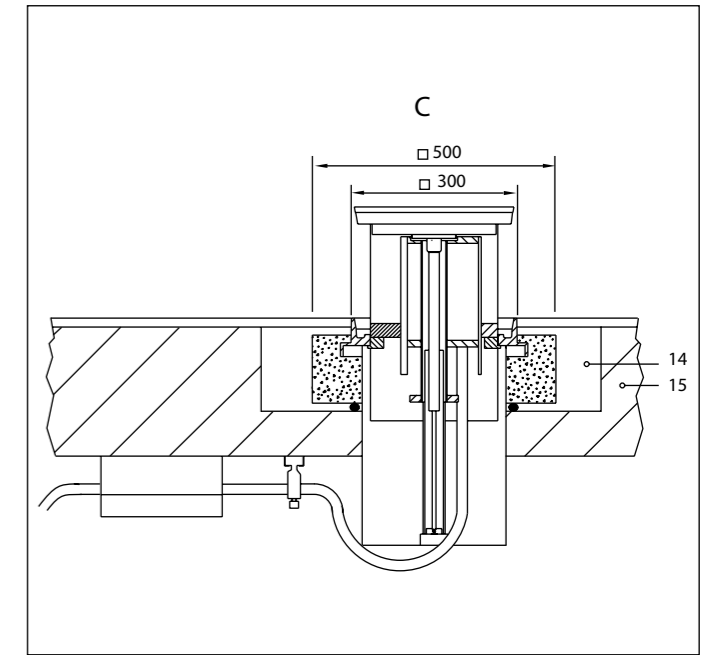
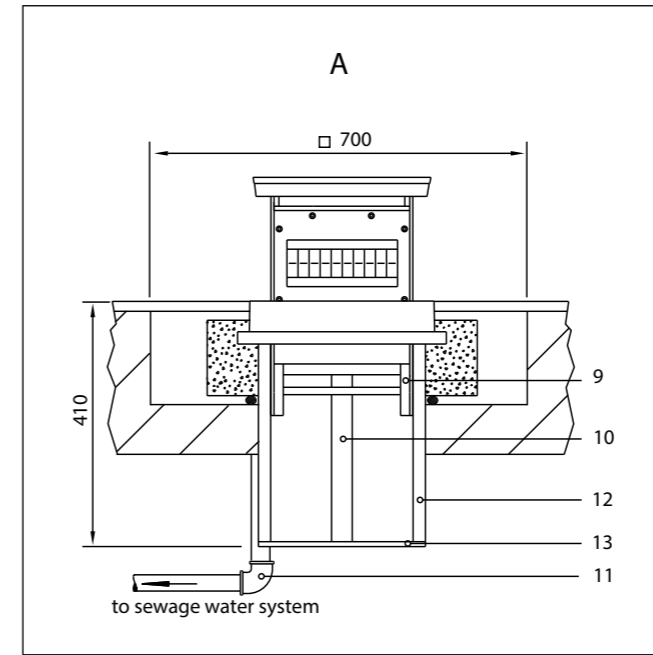
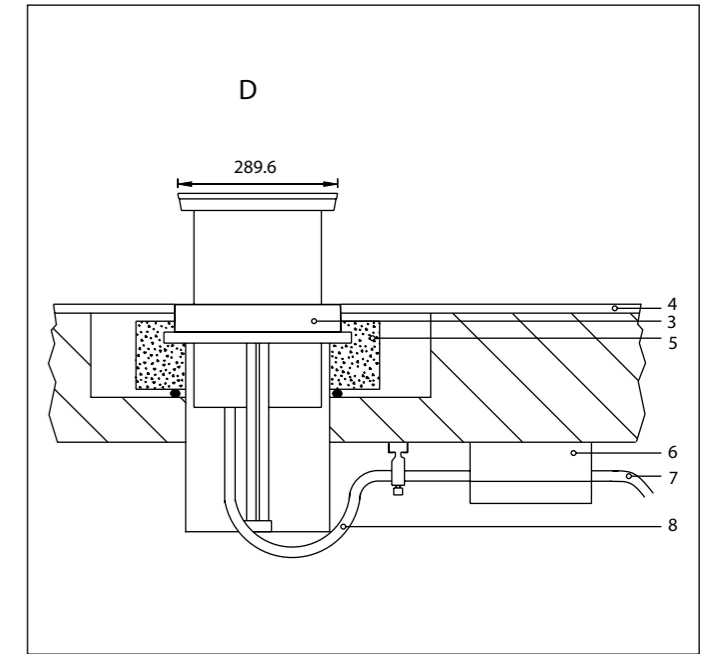
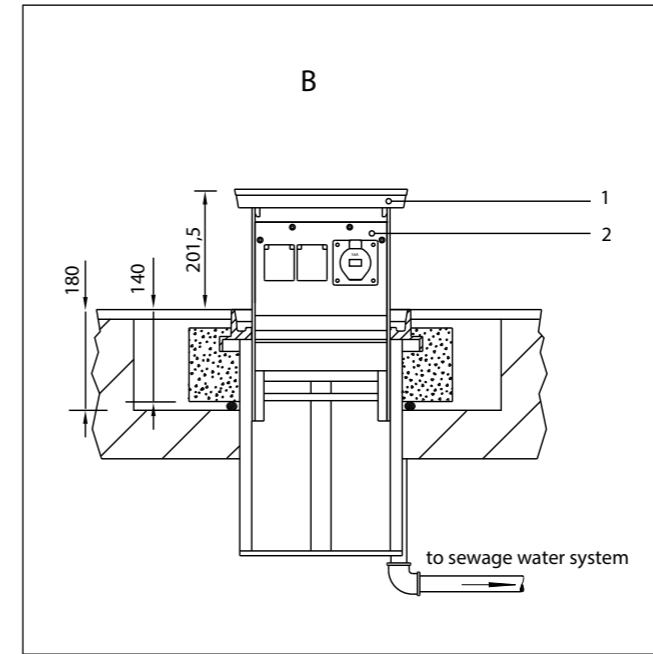
Construction housing for installing underground comprising a construction of wood boards with attachment brackets on 2 sides for installing on site and used for fixing fire-proof casing on site.

Technical data	SED30AN	SED30IN
Protection stages:	IP 44 for electrical sockets	IP 65 for distributors
Protection equipment:	earth contact class 1	
Mains voltage / frequency:	230/400V, 50 Hz	
Kind of voltage:	TN-S system	
Connection value:	approx. 15 kW	
Feed in cable approx. permissible:	5 x 16 mm ²	
Feed in cable approx. permissible:	76 kg	47 kg
Device column equipped:	30 kg	
Cover support (incl. sealing compound):	110 mm	60 mm
Installation depth without fire prevention cover:	520 mm	470 mm
Extendible height::	233 mm	202 mm
Space for pavement in cover:	50 mm	20 mm
Load capacity for the paved cover:	D 400, 40t point load	B 125, 12,5t point load
Lifting mechanism:	Thread spindle	
Sewage connections:	2 St. DN 40	



- 1 - Cover
- 2 - Device column
- 3 - Cover support
- 4 - Surface material
- 5 - Concrete collar (on site)
- 6 - Cable connection box
- 7 - Lead in cable (to prov. before inst.)
- 8 - Flexible connection cable
- 9 - Roller guide
- 10 - Lifting mechanism
- 11 - Surface water drainage
- 12 - Frame of guide
- 13 - Traverse (Support for lifting mechanism)
- 14 - Sealing compound (to prov. before inst.)
- 15 - Concrete ceiling or floor

Measures in mm



- 1 - Cover
- 2 - Device column
- 3 - Cover support
- 4 - Surface material
- 5 - Concrete collar (on site)
- 6 - Cable connection box
- 7 - Lead in cable (to prov. before inst.)
- 8 - Flexible connection cable
- 9 - Roller guide
- 10 - Lifting mechanism
- 11 - Surface water drainage
- 12 - Frame of guide
- 13 - Traverse (Support for Lifting mechanism)
- 14 - Sealing compound (bauseits) (to prov. before inst.)
- 15 - Concrete ceiling or floor

Measures in mm

Consisting of:

Concrete collar

Concrete collar moulded and cast on site in which contains the lid bearing of die-cast aluminium. Concrete collar that is adapted in dimension to the recess in the ground for the retractable supply post and which enables simple concreting and levelling on site in conformance with the trade.

Shaft insertion

Metal insertion of corrosion resistant aluminium consisting of:

- Cage guide of corrosion-resistant aluminium profiles in the form of rails and ball rollers for device column
- Cover support with sealing, pavement frame, drainage, open pipe for surface water drainage
- Bottom support with lifting mechanism (thread spindle, spindle-guide and spindle nut)

Device column

Horizontal draw out case construction of weather resistant PVC with built on shift cover of cast aluminium, built-in space of 50 mm for pavement. The case of insulated material (IP55) is a self supporting construction and constructed as a rugged and shock resistant device. 2 sides (A+B) are provided for the equipment of the device. By SED50 lead-in can be plugged by flexible connection cable 5 x 16 mm², by SED56 with 5 x 50 mm². The lifting mechanism with thread spindle is located in the centre of the device column. For the operating by crank handle the spindle is watertight passed through the cover.

Electric device modules

The interior wiring of the devices and the feeding-in are arranged by SED50 for the TN-S system, by SED56 for the TN-C system (according to a wiring diagram). Wiring for other systems only after technical clarification and written contract.

Cable connection box SED50

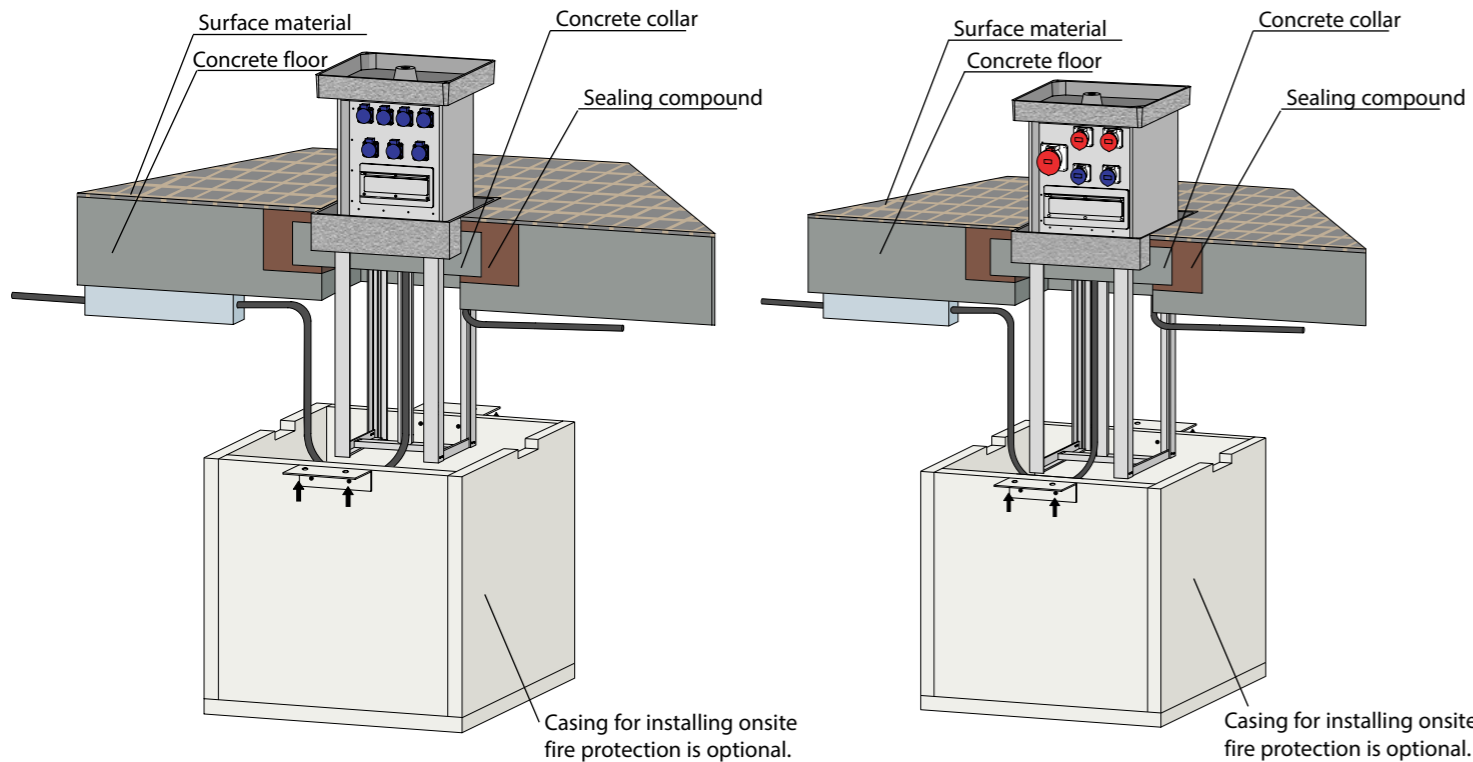
PVC housing with 10-16 mm terminals for supply or looping through incoming cables. Pre-fuse NH 0063 A plug-cutch 80 A and tension relief for the flexible connection cable.

Cable connection box SED56

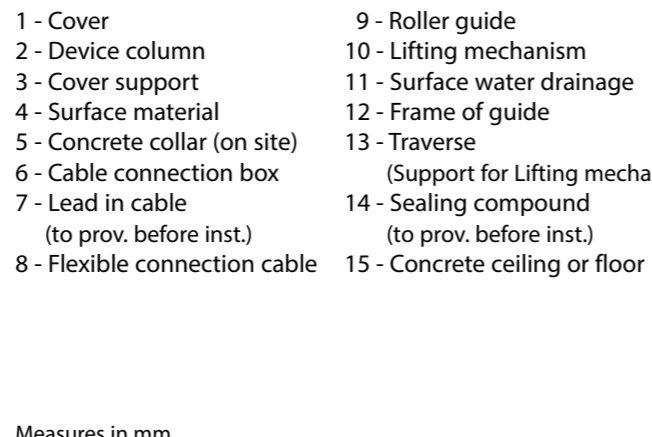
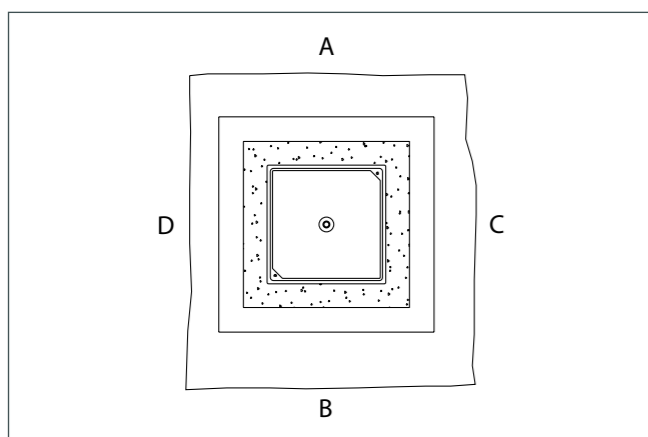
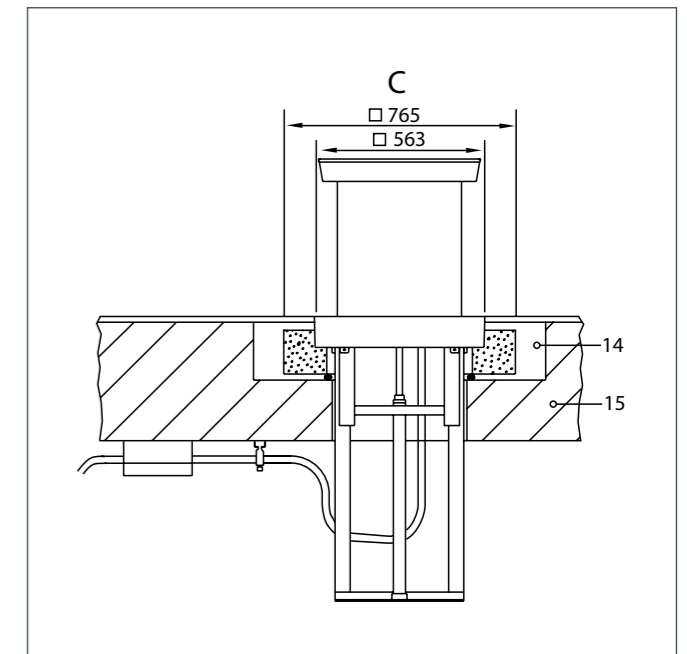
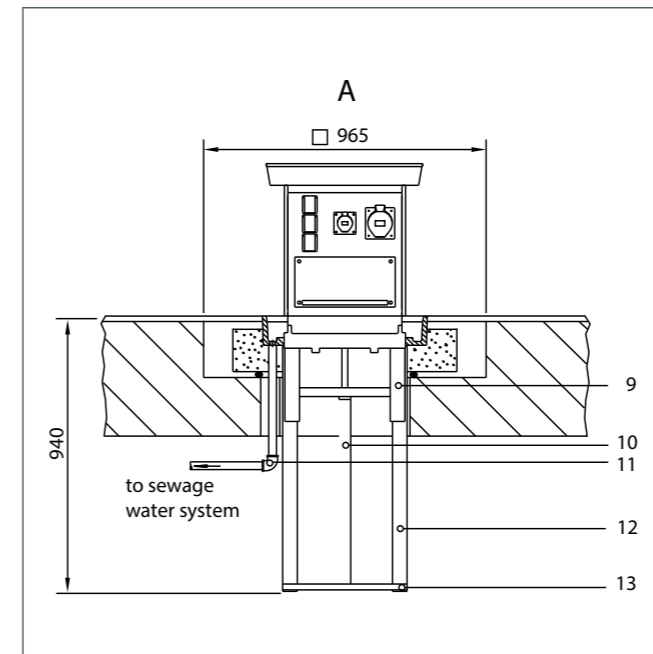
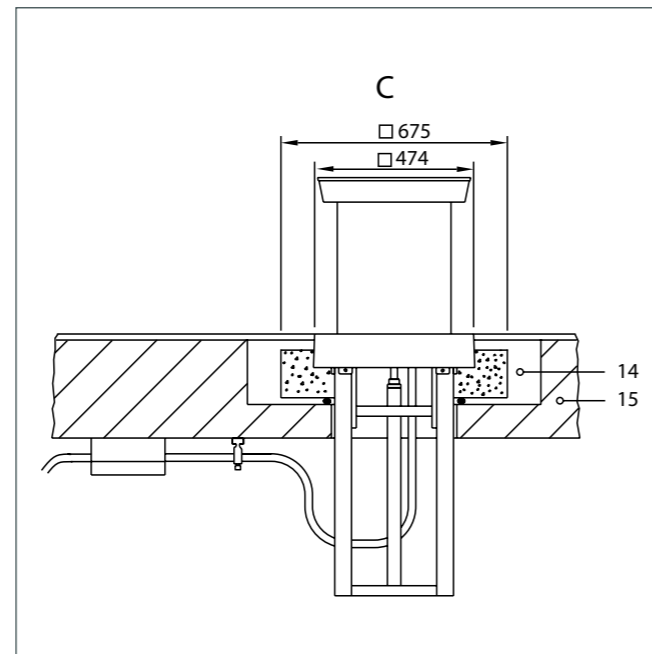
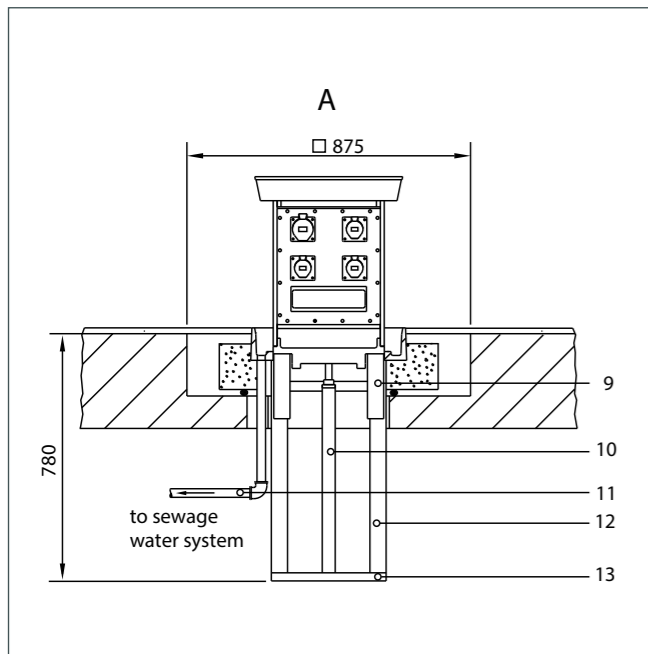
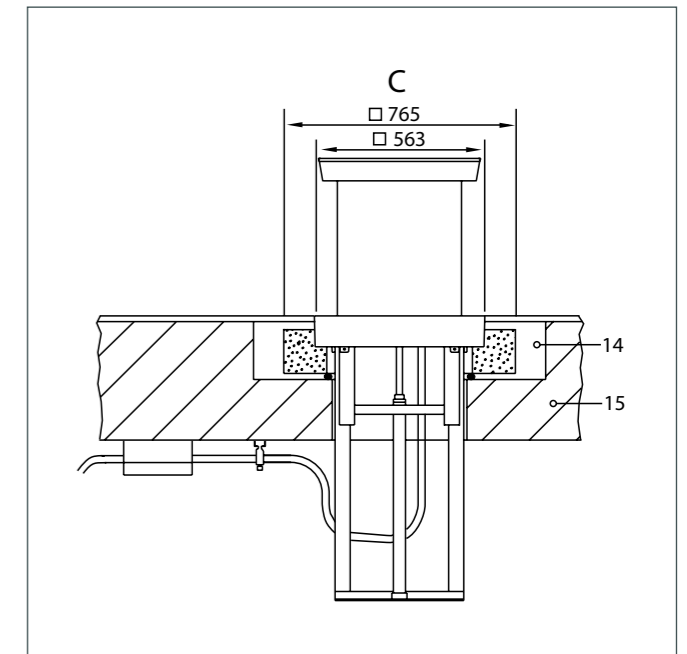
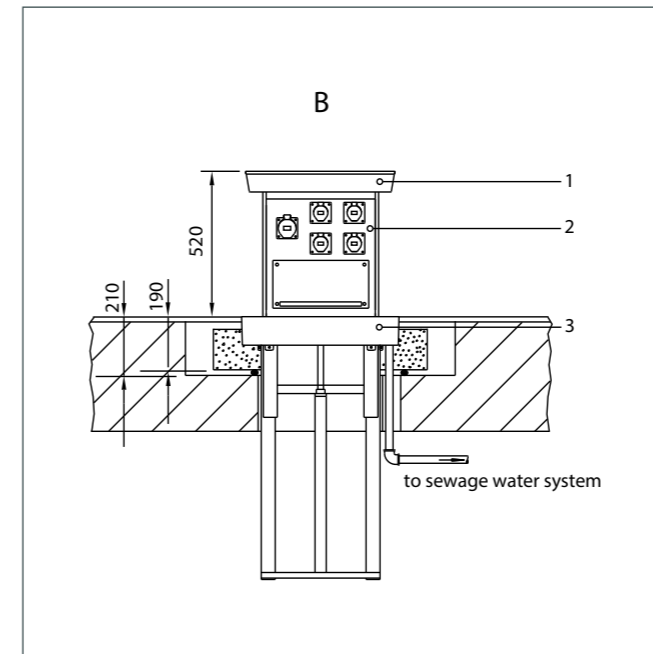
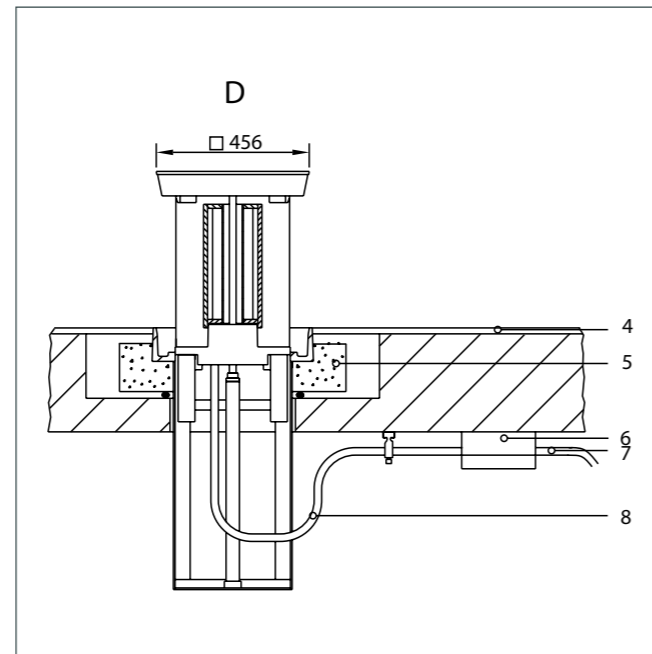
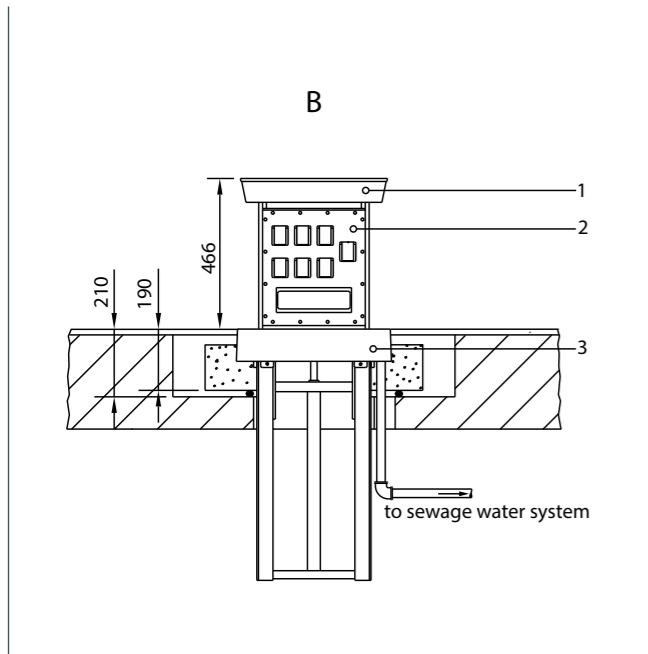
PVC housing with 25-50 mm terminals for supply or looping through incoming cables. Pre-fuse NH 0063 A plug-cutch 80 A and tension relief for the flexible connection cable.

Casing for attaching fire protection on site (optional)

Construction housing for installing underground comprising a construction of wood boards with attachment brackets on 2 sides for installing on site and used for fixing fire-proof casing on site.



Technical data	SED50	SED56
Protection stages:	IP 44 for electrical sockets IP 67 for distributor	
Protection equipment:	earth contact class 1	
Mains voltage / frequency:	230/400V, 50 Hz	
Kind of voltage:	TN-S system	TN-C system
Connection value:	approx. 30 kW	approx. 50 kW
Feed in cable approx. permissible:	5 x 16 mm ²	5 x 50 mm ²
Feed in cable approx. permissible:	101,5 kg	128,5 kg
Device column equipped:	65 kg	75 kg
Cover support (incl. sealing compound):	190 mm	110 mm
Installation depth without fire prevention cover:	780 mm	940 mm
Extendible height:	466 mm	520 mm
Space for pavement in cover:	50 mm	
Load capacity for the paved cover:	D 400, 40 t point load	
Lifting mechanism:	Thread spindle stainless steel	
Sewage connections:	1 St. DN 40	

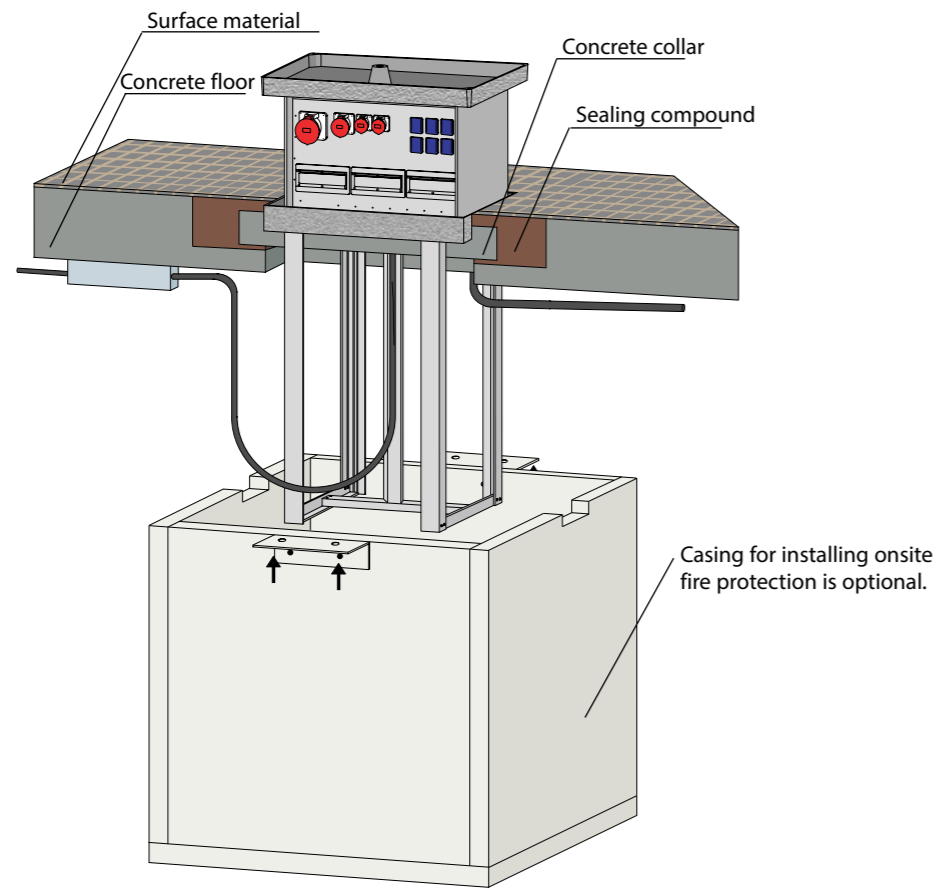


- 1 - Cover
- 2 - Device column
- 3 - Cover support
- 4 - Surface material
- 5 - Concrete collar (on site)
- 6 - Cable connection box
- 7 - Lead in cable (to prov. before inst.)
- 8 - Flexible connection cable
- 9 - Roller guide
- 10 - Lifting mechanism
- 11 - Surface water drainage
- 12 - Frame of guide
- 13 - Traverse (Support for Lifting mechanism)
- 14 - Sealing compound (to prov. before inst.)
- 15 - Concrete ceiling or floor

Measures in mm

- 1 - Cover
- 2 - Device column
- 3 - Cover support
- 4 - Surface material
- 5 - Concrete collar (on site)
- 6 - Cable connection box
- 7 - Lead in cable (to prov. before inst.)
- 8 - Flexible connection cable
- 9 - Roller guide
- 10 - Lifting mechanism
- 11 - Surface water drainage
- 12 - Frame of guide
- 13 - Traverse (Support for Lifting mechanism)
- 14 - Sealing compound (to prov. before inst.)
- 15 - Concrete ceiling or floor

Measures in mm



Technical data	SED80
Protection stages:	IP 44 for electrical sockets IP 55 for distributors
Protection equipment:	earth contact class 1
Mains voltage / Frequenzy:	230/400V, 50 Hz
Kind of voltage:	TN-S system
Connection value:	approx. 130 kW
Feed in cable approx. permissible:	5 x 150 mm ²
Concrete shaft + shaft insert:	231 kg
Device column equipped:	80 kg
Cover support (incl. sealing compound):	130 mm
Installation depth:	1375 mm
Extendible height:	590 mm
Space for pavement in cover:	50 mm
Load capacity for the paved cover:	C 250, 25 t point load
Lifting mechanism:	Thread spindle
Sewage connections:	2 St. DN 40

Consisting of:

Concrete collar

Concrete collar moulded and cast on site in which contains the lid bearing of die-cast aluminium. Concrete collar that is adapted in dimension to the recess in the ground for the retractable supply post and which enables simple concreting and levelling on site in conformance with the trade.

Shaft insertion

Metal insertion of corrosion resistant aluminium consisting of:

- Cage guide of corrosion-resistant aluminium profiles in the form of rails and ball rollers for device column
- Cover support with sealing, pavement frame, drainage, open pipe for surface water drainage
- Bottom support with lifting mechanism (thread spindle, spindle-guide and spindle nut)

Device column

Horizontal draw out case construction of weather resistant PVC with built on shift cover of cast aluminium, built-in space for pavement. The case of insulated material (IP55) is a self supporting construction and constructed as a rugged and shock resistant device. 2 sides (A+B) are provided for the equipment of the device. Lead-in by a flexible connection cable 5 x 1 x 95 mm². The lifting mechanism with thread spindle is located in the centre of the device column. For the operating by crank handle the spindle is watertight passed through the cover.

Electric device modules

The interior wiring of the devices and the feeding-in are arranged for the TN-S system. Wiring for other systems only after technical clarification and written contract.

Seite A:

- 1 attached electrical outlet CEE 125 A, 5 P
- 1 attached electrical outlet CEE 32 A, 5 P
- 1 attached electrical outlet CEE 16 A, 5 P
- 6 protective contact sockets
- 3 distribution modules with transparent cover for 10 partitions
- 1 elcb 125 A, 4 P, 300 mA
- 1 elcb 63 A 63 A, 4 P, 30 mA
- 1 mcb 125 A, C, 3 P
- 1 mcb 32 A, B, 3 P
- 1 mcb 16 A, B, 3 P
- 5 mcb 16 A, B, 1 P
- 1 fuse D-02, 63 A, 3 P

Seite B:

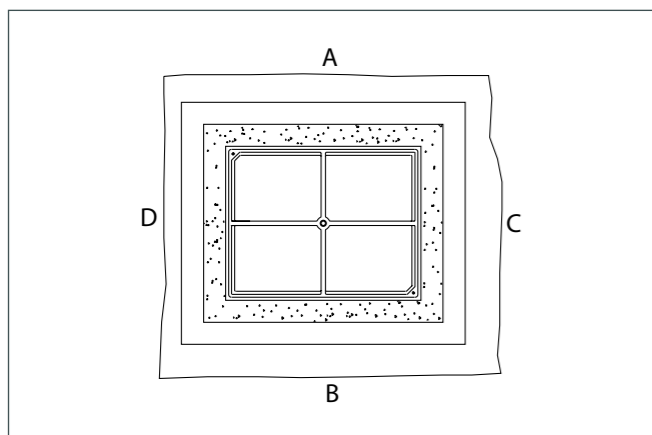
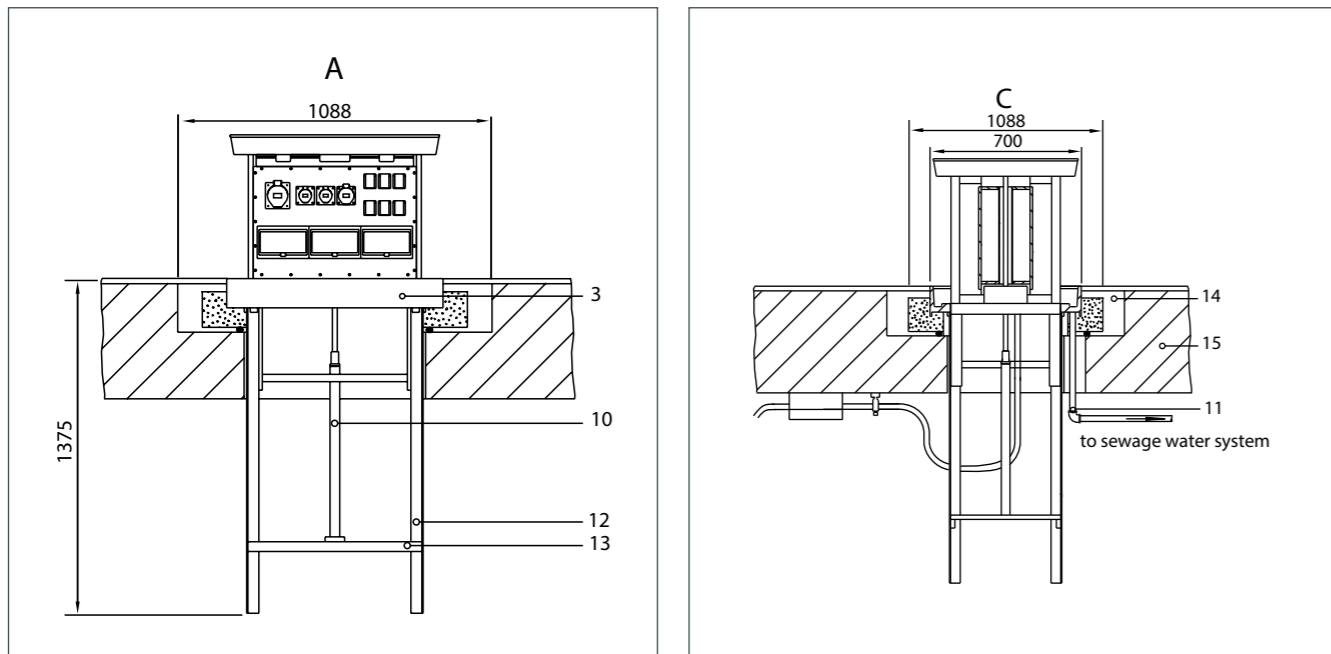
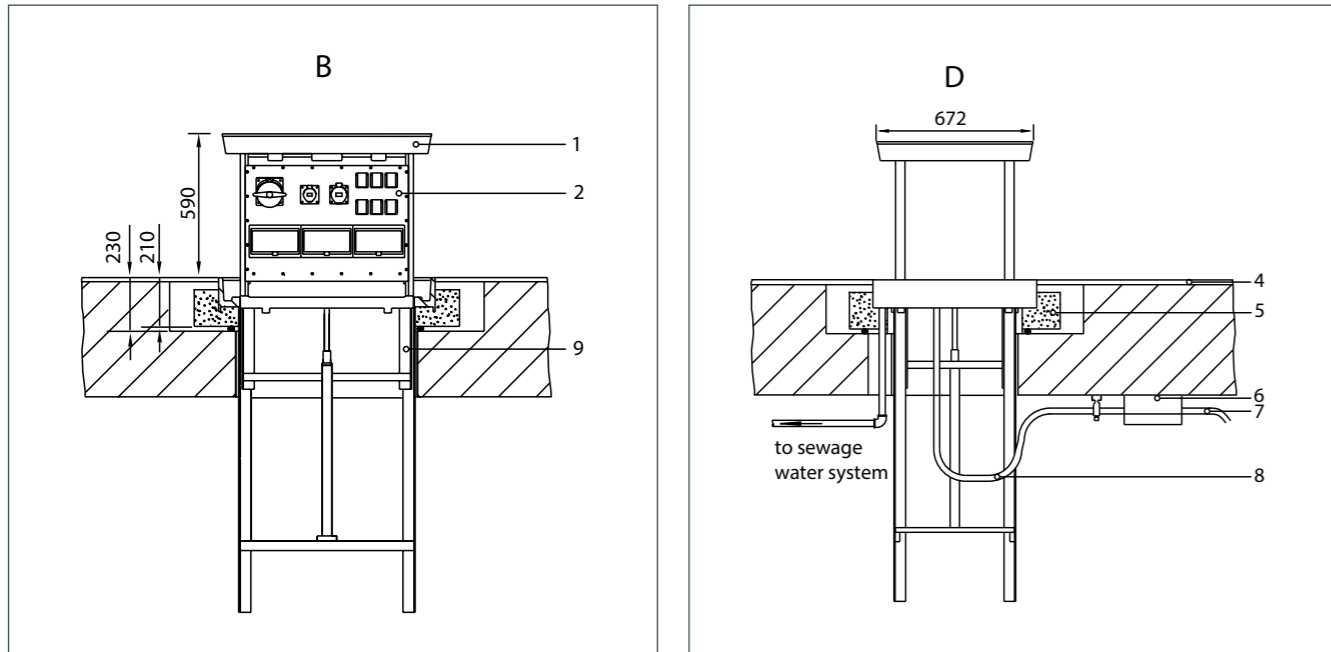
- 1 attached electrical outlet CEE 63 A, 5 P
- 1 attached electrical outlet CEE 32 A, 5 P
- 1 attached electrical outlet CEE 16 A, 5 P
- 6 protective contact sockets
- 3 distribution modules with transparent cover for 10 partitions
- 1 elcb 63 A, 4 P, 30 mA
- 1 elcb 63 A, 4 P, 300 mA
- 1 mcb 63 A, B, 3 P
- 1 mcb 32 A, B, 3 P
- 2 mcb 16 A, B, 3 P
- 4 mcb 16 A, B, 1 P
- 1 mcb 2 A, C, 1 P
- 1 fuse D-02, 63 A, 3 P

Cable connection box

PVC housing with 70-150 mm² terminals for supply or looping through incoming cables. Pre-fuse NH 01 200 A and tension relief for the flexible connection cable.

Casing for attaching fire protection on site (optional)

Construction housing for installing underground comprising a construction of wood boards with attachment brackets on 2 sides for installing on site and used for fixing fire-proof casing on site.



- 1 - Cover
- 2 - Device column
- 3 - Cover support
- 4 - Surface material
- 5 - Concrete collar (on site)
- 6 - Cable connection box (to prov. before inst.)
- 7 - Lead in cable (to prov. before inst.)
- 8 - Flexible connection cable
- 9 - Roller guide
- 10 - Lifting mechanism
- 11 - Surface water drainage
- 12 - Frame of guide
- 13 - Traverse (Support for Lifting mechanism)
- 14 - Sealing compound (to prov. before inst.)
- 15 - Concrete ceiling or floor

Measures in mm

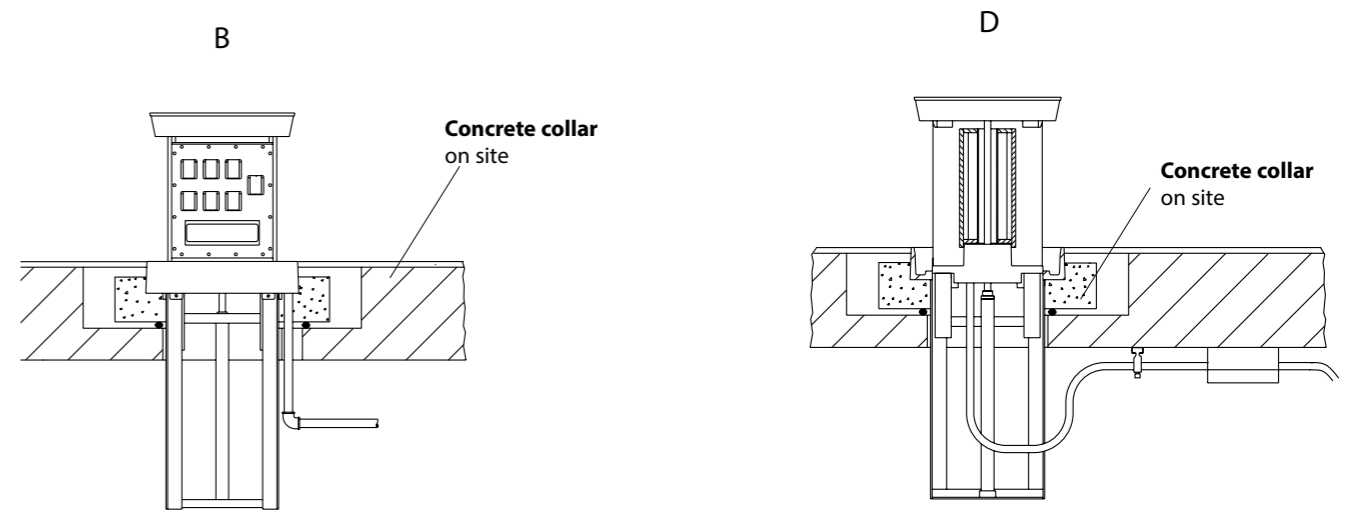
Moser Systemelektrik offers two different installation solutions for varying construction conditions so that our customers can benefit from the sophisticated technology of Moser products.

Installation solution I:

Installation frame and cover support with concrete collar (see illustrations on the following pages)

Advantage: Easy installation thanks to mortar bed and thus easy filling in of installation opening.

Requirement: Thicker floors required.

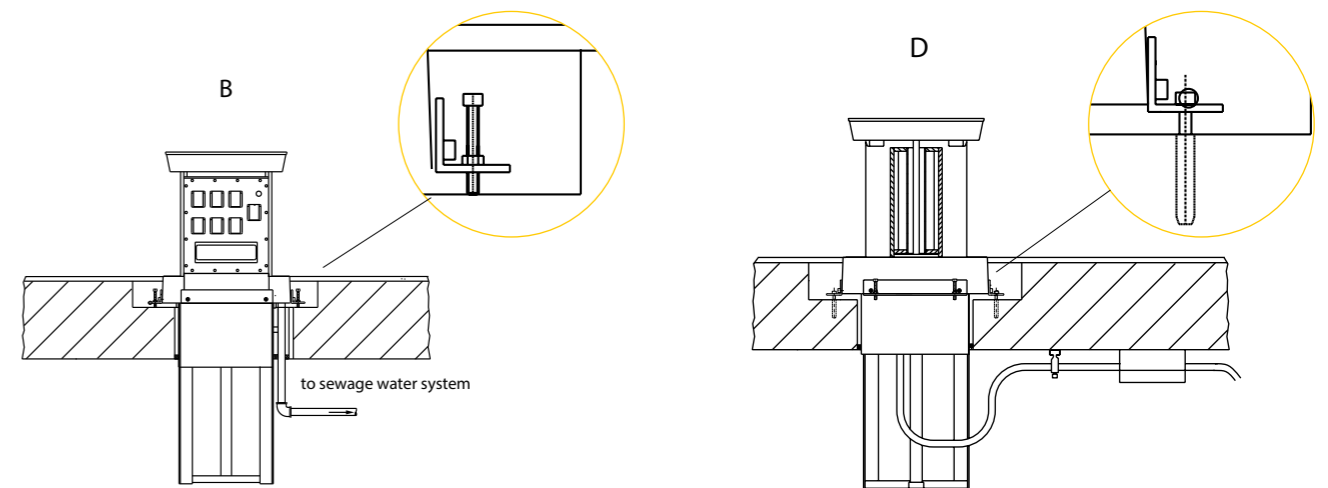


Installation solution II:

Installation frame and cover support with adjustment angle. (Offer without illustrations)

Advantage: Installation and levelling possible with thinner floors.

Additional costs: Additional sealing and formwork when installing and concreting.



Attention: Drawing refers to SED50. The same fixture method applies to all other types of retractable supply posts mentioned in this leaflet.

The Moser retractable supply posts with hatch cover are the ideal supply solution for any open space at inner and outdoor area. Our retractable supply posts with hatch cover are invisible when they're sunk-in the ground. Therefore they are protected against vandalism.

The flexible use of space and the invisible "storage" enable a supply of energy despite shortage of space as well as the possibility of flexible utilization concepts. After all the retractable supply posts with hatch cover provides a harmonic cityscape.

Retractable supply post
with hatch cover

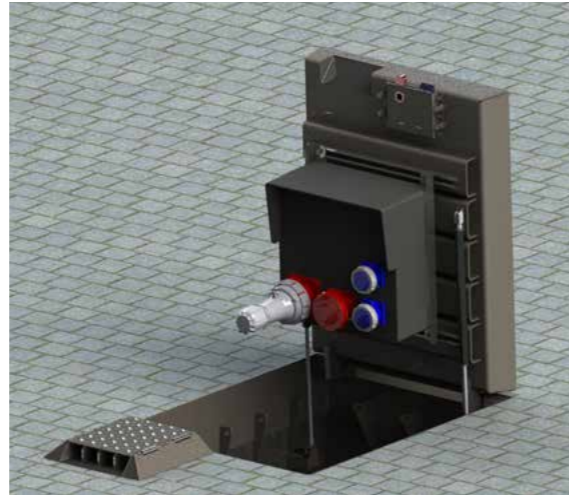


Range of application

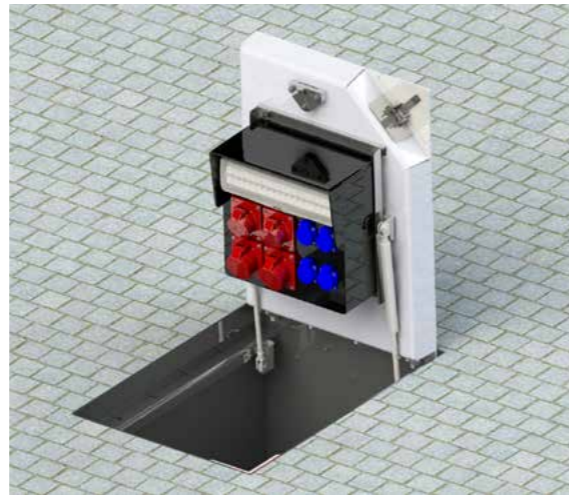
- Marketplaces
- Fairgrounds
- Historical places and historic buildings
- Industry halls
- Maintenance halls
- Bus stops
- Train stations
- Maintenance hangars on airports
- Aprons

As an optional solution, the retractable supply posts with hatch cover can be equipped with special equipment as follows:

- Fresh water with multiple outlets
- 2 cable outlets (SEK80)
- Diving bell
- Total current electric meter
- Illumination while opening
- Heating system



SEK-B-KA-80-40



SEK-KA-80-12,5

Important components of the MOSER retractable supply posts with hatch cover

Solid rubber- wall box

- Can be equipped individually according to customer preference
- The insert and the wall box are connected with a line H07RN-F

Feed-in

- Supply-insertion with cable bushing KT4
- For line diameter 14-68cm
- The stainless steel casting for each variation is standard equipped with two cable bushing to loop through the connection cable
- The cover of the pit is not watertight, an adequate drainage has to be provided on site. Possibility of connection with a pipe DN100 to the sewer junction

Solid rubber insert

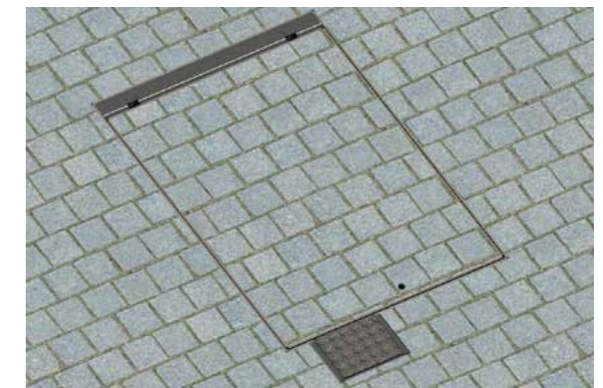
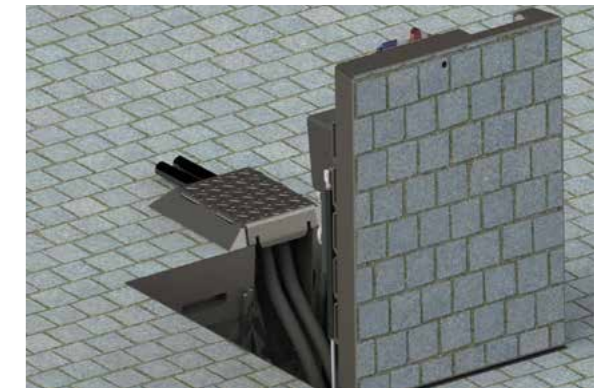
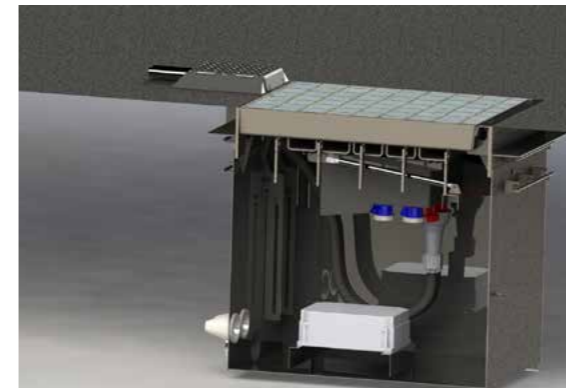
To fit the connection cable to the bushing clamps on site

Cable outlet

For reasons of safety, the retractable supply post can be closed while the sockets are plugged.

The special: retractable supply with hatch cover and cable outlet – SEK-B-KA-80-40

SEK-B-KA-80



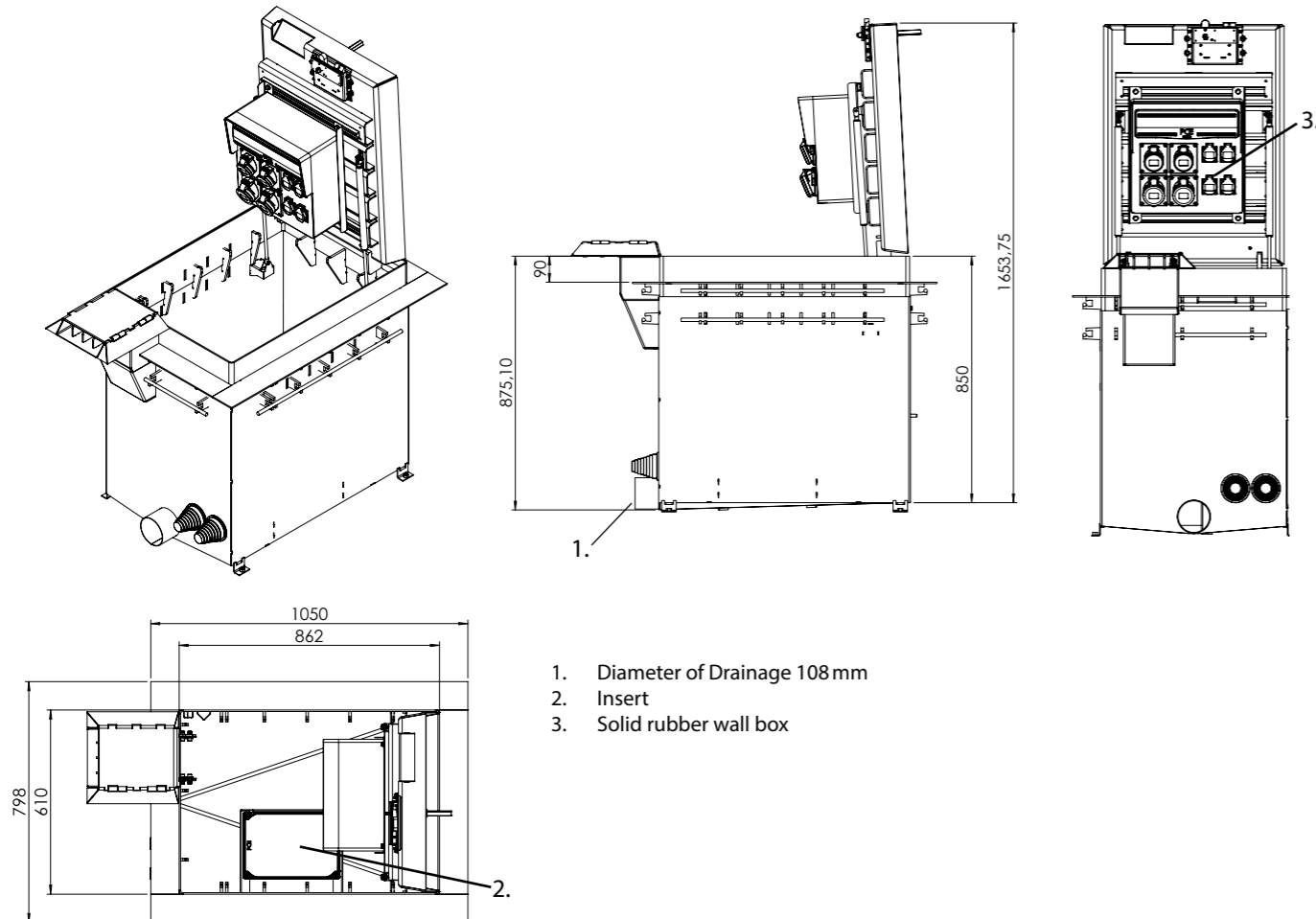
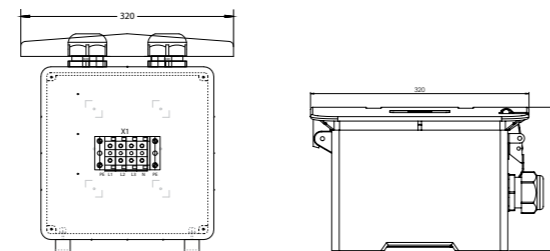
The Moser retractable supply post with hatch cover stands for:

- Capacity of the cover up to 40t
- Cable outlet for the use while closed status (Protection against forbidden access, protection of the cables)
- During operation the SEK-KA is walkable and drivable
- Through the special execution of the support bases in the cap bearing a heating system and a cleaning of these support before closing isn't necessary
- The novel locking system guarantees that the SEK is completely locked in a safe manner. An independent opening because of vibrations of passenger cars ,which drive across the cover, is prevented through an additional bolting.
- The bolting gives a visual feedback "locked"
- Individual and customer oriented equipment
- Several media can be equipped (electric, compressed air, data, water.....)
- Robust construction made out of stainless steel
- Long-life cycle
- Insertion of the supply cable with two KT4 cable sleeves
- Cable routing in two different directions possible



Insert

2 x M40 screwing rear
Insert wired on terminal blocks 5 x 50/35 m²



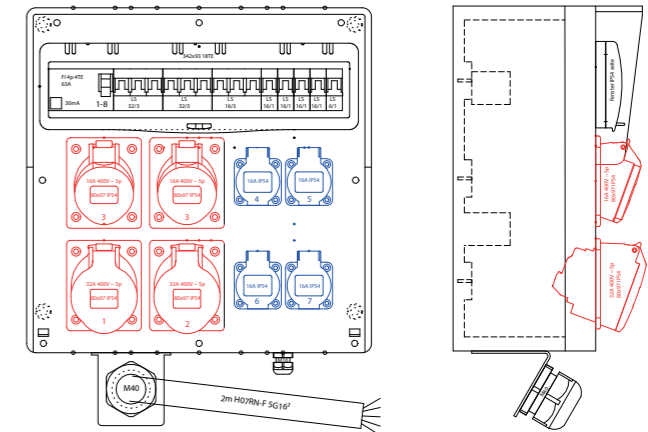
1. Diameter of Drainage 108 mm
2. Insert
3. Solid rubber wall box

Solid rubber wall box
1 x M40 angled screw coupling below
With 2 m cable H07RN-F 5G16 mm²
1 x M16 screwing below

2 x CEE socket 32 A 5 P 400V
2 x CEE socket 16 A 5 P 400V
4 x earth protective socket 16 A 250V IP54
2 x mcb 32 A 3 P C
1 x mcb 16 A 3 P C
4 x mcb 16 A 1 P C
1 x mcb 6 A 1 P B for external outlet
1 x rcb 63 A/4/0.03 A

Fuse protection 63 A on site

Order Number: M5048200013

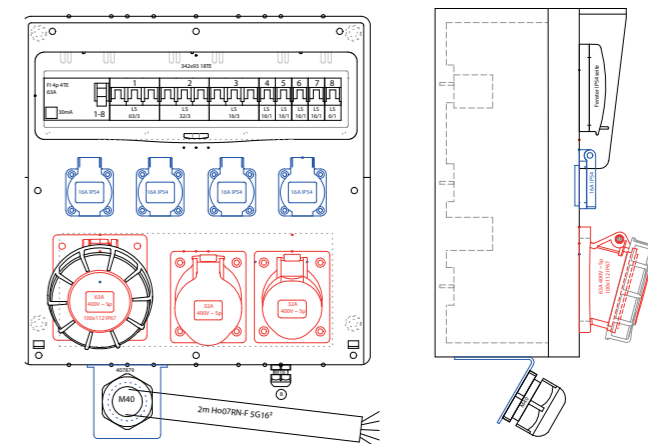


Solid rubber wall box
1 x M40 angled screw coupling below
With 2 m cable H07RN-F 5G16 mm²
1 x M16 screwing below

1 x CEE socket 63 A 5 P 400V IP67
1 x CEE socket 16 A 5 P 400V
1 x CEE socket 32 A 5 P 400V
4 x earth protective socket 16 A 250V IP54
1 x mcb 63 A 3 P C
1 x mcb 16 A 3 P C
1 x mcb 32 A 3 P C
4 x mcb 16 A 1 P C
1 x mcb 6 A 1 P B for external outlet
1 x rcb 63 A/4/0.03 A

Fuse protection 63 A on site

Order Number: M5048200023

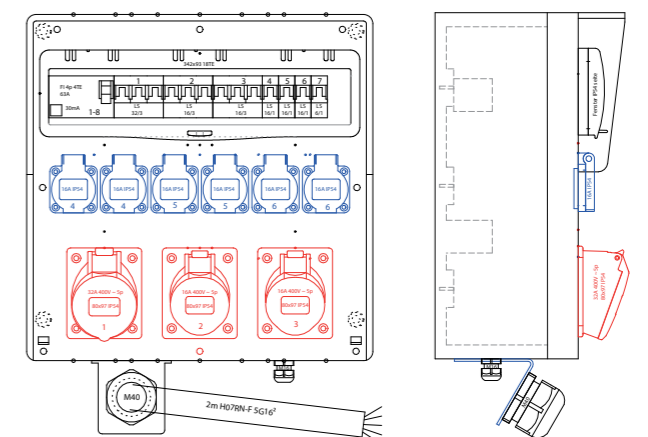


Solid rubber wall box
1 x M40 angled screw coupling below
With 2 m cable H07RN-F 5G16 mm²
1 x M16 screwing below

1 x CEE socket 32 A 5 P 400V
2 x CEE socket 16 A 5 P 400V
6 x earth protective socket 16 A 250V IP54
1 x mcb 32 A 3 P C
2 x mcb 16 A 3 P C
3 x mcb 16 A 1 P C
1 x mcb 6 A 1 P B for external outlet
1 x rcb 63 A/4/0.03 A

Fuse protection 63 A on site

Order Number: M5048200033

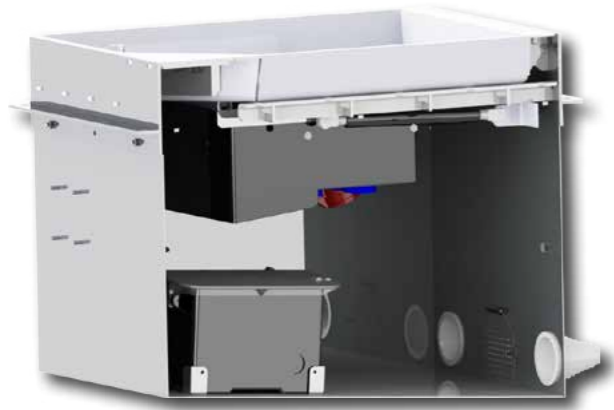


Retractable supply post with hatch cover SEK60 and SEK80

Our gradual version of the retractable supply posts with hatch cover have a lower load resistance of the cover and no cable protection
 The load resistance of the cover with filled cover is 12,5t
 The load resistance of the cover with checkered plate is 1,5t .

The retractable supply post with hatch cover is offered in different sizes
 (further sizes like SEK40 and SEK100 have to be requested)

Of course these retractable supply posts with hatch cover comply also with all the requirements for its use as flexible supply units on public open spaces or in halls.



The MOSER retractable with hatch cover stands for:

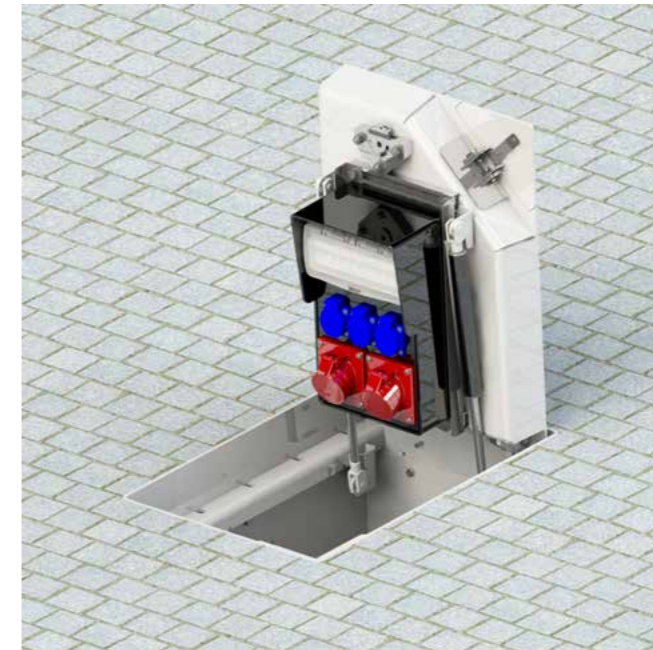
- The load resistance of the cover with filled cover is 12,5t
- The load resistance of the cover with checkered plate is 1,5t .
- Several media can be equipped (electric, compressed air, data, water.....)
- Robust construction made out of stainless steel
- Stainless steel lock which is service reduced with special square key wrench
- Long-life cycle
- Easy closing of the cover
- Insertion of the supply cable with two KT4 cable sleeves
- Cable routing in two different directions possible
- Cable outlet in the corner

Article description	Description	Capacity	
SEK-R-60-1,5	Hatch cover version checkered plate length 600 mm	1,5 tons	on request
SEK-B-60-12,5	Hatch cover version filled length 600 mm	12,5 tons	
SEK-R-80-1,5	Hatch cover version checkered plate length 800 mm	1,5 tons	on request
SEK-B-80-12,5	Hatch cover version filled length 800 mm	12,5 tons	
SEK-R-40-1,5	Hatch cover version checkered plate length 400 mm	1,5 tons	on request
SEK-B-40-12,5	Hatch cover version filled length 400 mm	12,5 tons	on request
SEK-R-100-1,5	Hatch cover version checkered plate length 1000 mm	1,5 tons	on request
SEK-B-100-12,5	Hatch cover version filled length 1000 mm	12,5 tons	on request

Retractable supply post with hatch cover SEK60 and SEK80

SEK60 and SEK80

SEK60-12,5

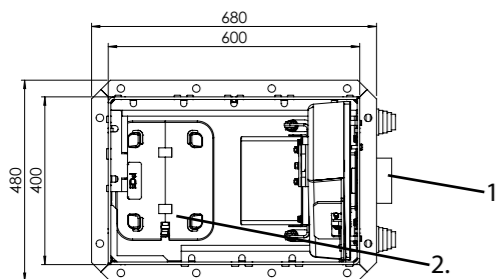
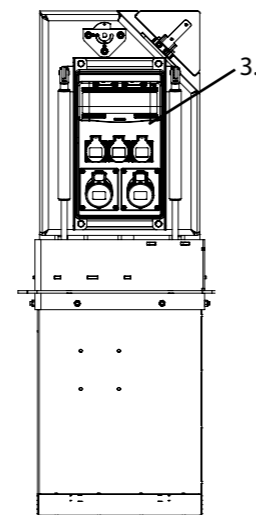
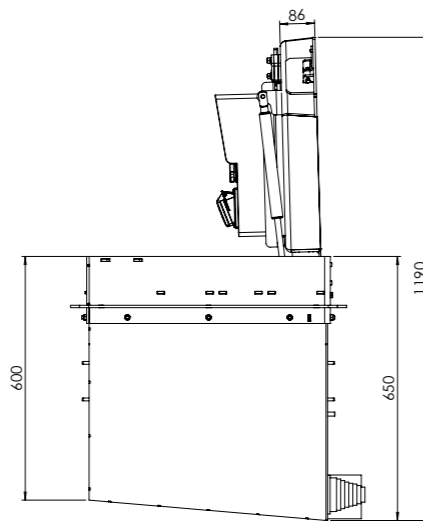
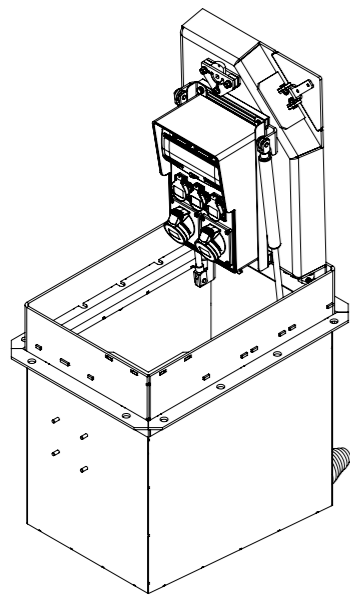
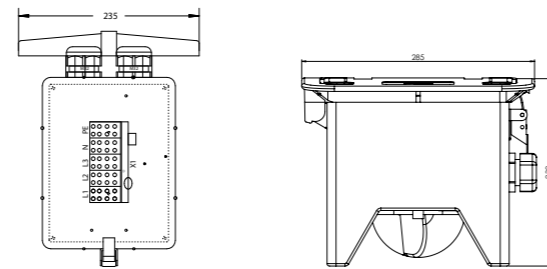


SEK80-12,5





Insert
Mobile solid rubber insert
2x M32 screwing rear
Insert with HKL-clamp

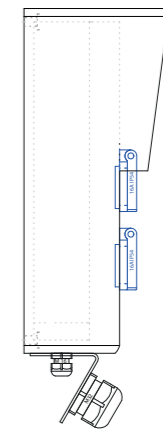
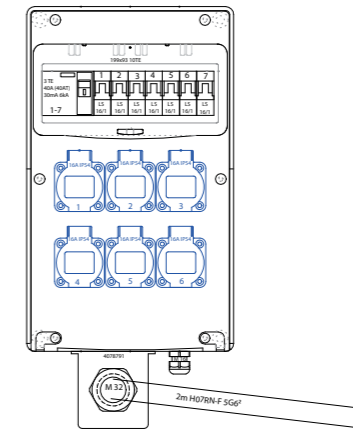


1. Diameter of Drainage 108 mm
2. Insert
3. Solid rubber wall box

Solid rubber wall box
1 x M32 angled screw coupling below
With 2 m cable H07RN-F 5G6 mm²
1 x M16 screwing below

6 x earth protective socket 16 A 250V IP54
6 x mcb 16A 1P C
1 x mcb 6 A 1P B for external outlet
1 x rcb 40 A/4/0.03 A
Fuse protection 32 A on site

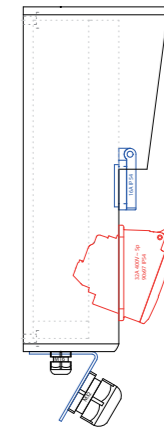
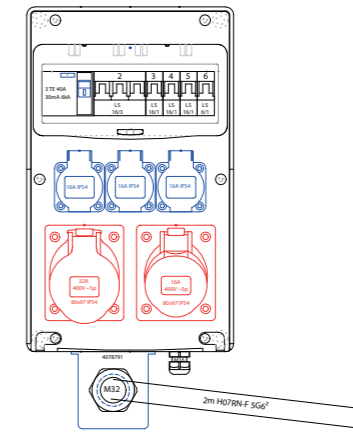
Order Number : M504600013



Solid rubber wall box
1 x M32 angled screw coupling below
With 2 m cable H07RN-F 5G6 mm²
1 x M16 screwing below

1 x CEE socket 32 A 5P 400V
1 x CEE socket 16 A 5P 400V
3 x earth protective socket 16 A 250V IP54
1 x mcb 63 A 3P C
3 x mcb 16A 1P C
1 x mcb 6 A 1P B for external outlet
1 x rcb 40 A/4/0.03 A
Fuse protection 32 A on site

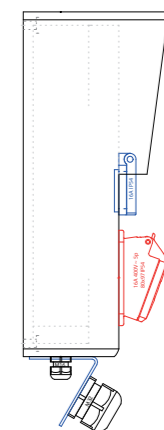
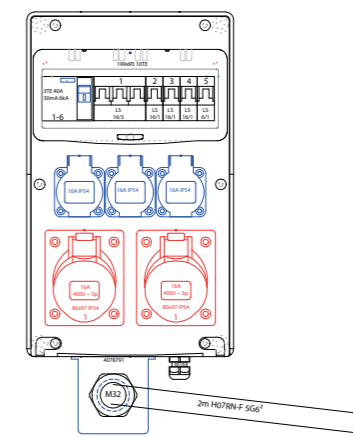
Order Number : M504600023



Solid rubber wall box
1 x M32 angled screw coupling below
With 2 m cable H07RN-F 5G6 mm²
1 x M16 screwing below

2 x CEE socket 16 A 5P 400V
3 x earth protective socket 16 A 250V IP54
1 x mcb 16A 3P C
3 x mcb 16A 1P C
1 x mcb 6 A 1P B for external outlet
1 x rcb 40 A/4/0.03 A
Fuse protection 32 A on site

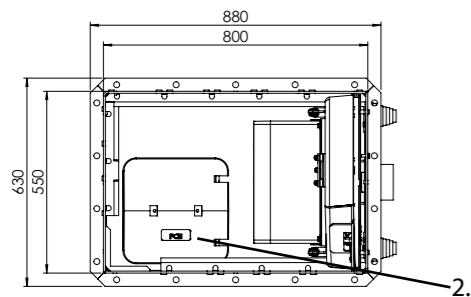
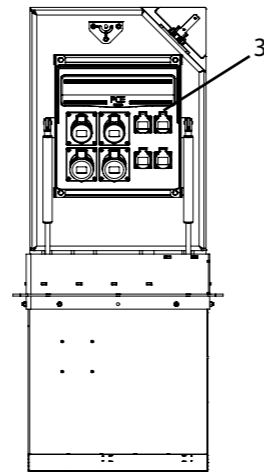
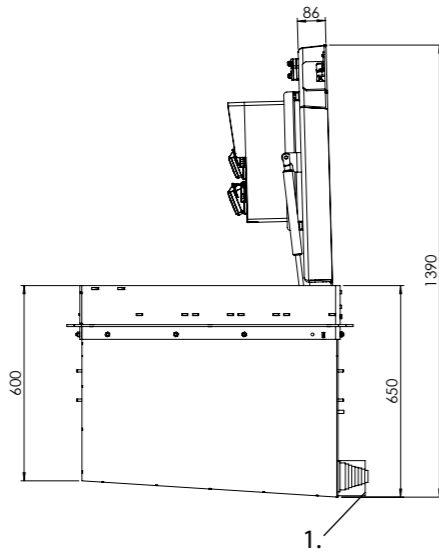
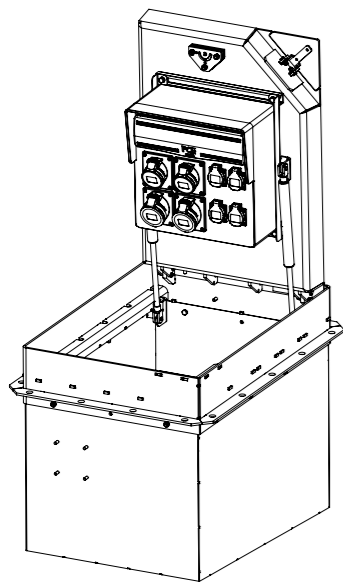
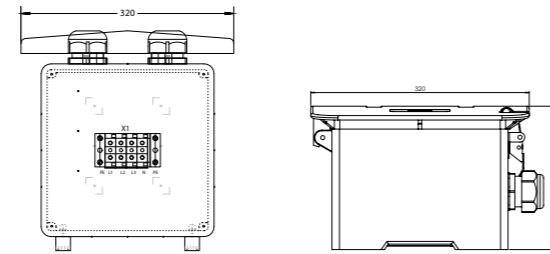
Order Number : M504600033





Insert

2 x M40 screwing rear
Insert wired on terminal blocks 5 x 50/35 m²



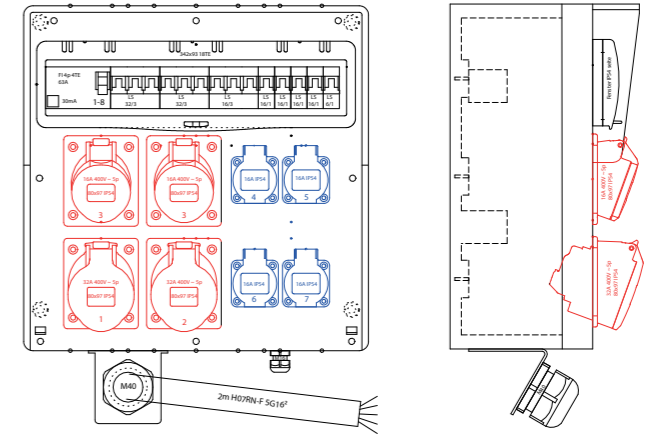
1. Diameter of Drainage 108 mm
2. Insert
3. Solid rubber wall box

Solid rubber wall box
1 x M40 angled screw coupling below
With 2 m cable H07RN-F 5G16 mm²
1 x M16 screwing below

2 x CEE socket 32 A 5 P 400V
2 x CEE socket 16 A 5 P 400V
4 x earth protective socket 16 A 250V IP54
2 x mcb 32 A 3 P C
1 x mcb 16 A, 1P, C
1 x mcb 6 A, 1P B for external outlet
1 x rcb 63 A/4/0.03 A

Fuse protection 63 A on site

Order Number : M504800013

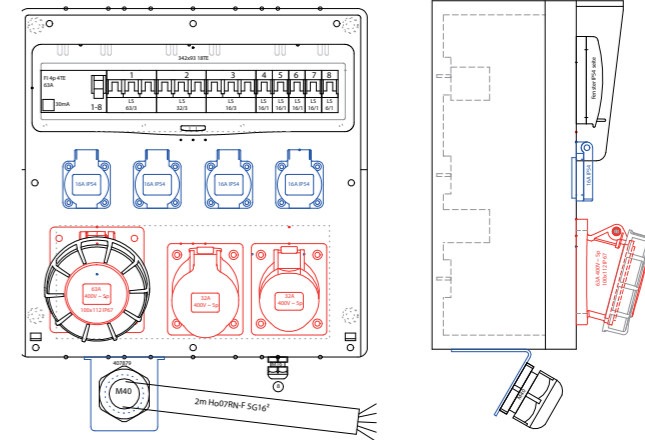


Solid rubber wall box
1 x M40 angled screw coupling below
With 2 m cable H07RN-F 5G16 mm²
1 x M16 screwing below

1 x CEE socket 63 A 5 P 400V IP67
1 x CEE socket 16 A 5 P 400V
1 x CEE socket 32 A 5 P 400V
4 x earth protective socket 16 A 250V IP54
1 x mcb 63 A 3 P C
1 x mcb 16 A 3 P C
1 x mcb 32 A 3 P C
4 x mcb 16 A 1P C
1 x mcb 6 A, 1P B for external outlet
1 x rcb 63 A/4/0.03 A

Fuse protection 63 A on site

Order Number : M504800023



Solid rubber wall box
1 x M40 angled screw coupling below
With 2 m cable H07RN-F 5G16 mm²
1 x M16 screwing below

1 x CEE socket 32 A 5 P 400V
2 x CEE socket 16 A 5 P 400V
6 x earth protective socket 16 A 250V IP54
1 x mcb 32 A 3 P C
2 x mcb 16 A 3 P C
3 x mcb 16 A, 1P C
1 x mcb 6 A, 1P B for external outlet
1 x rcb 63 A/4/0.03 A

Fuse protection 63 A on site

Order Number : M504800033

