



Things are Changing...*Fast!*

From space exploration to wastewater treatment facilities, Explosion Proof Certification to Germicidal Efficacy, Western Technology designs & manufactures world class portable lights for ever-changing new world applications.

LIGHTS CERTIFIED. TRUST EARNED.™



Designed + Manufactured in the USA

© Fall / Winter 2020-21 | WT Presentation Catalog

WTF Western
Technology

1 (800) 654-5483

www.WesternTechnologyLights.com



ABOUT US

Our Corporate Focus



In 1978, Western Technology, Inc. built our first light and deadman remote control specifically designed for the severe environments of abrasive blasting. Since then, Western Technology has built a business on **solving problems related to lighting critical, and often difficult to get to, temporary workspaces.**

From space travel to safe work force deployment on earth, yesterday's workspace emphasis was focused on worker safety and productivity. Today add controlling the spread of the invisible COVID-19 virus.

“Welcome to Western Technology. Our corporate focus is designing world-class, portable, LED work lights...each recognized for their “tool-like” reliability in the demanding workspaces of our marine, industrial, and aviation clients. Built in America and certified to meet the most stringent safety standards.” – Jim Giese, President

Contents

About Us	2
KICK-IT TOUGH™ Series	3
Explosion Proof Lighting	5
Ordinary Location Lighting	21
Abrasive Blast Lighting	23
Deadman Controls	25
Industry & Applications	27
Customers, Rentals & Testimonials	42

KICK-IT TOUGH™ SERIES

Explosion Proof | Ordinary Location | Abrasive Blast



We present our proprietary series of
KICK-IT TOUGH™ LED Safety Lights
Industrial-strength with “tool-like” reliability
Portable LED Work Lights...

Explosion Proof | LED Lights

- 1 **THE BRICK®** : PORTABLE AREA LIGHT
- 2 **THE BRICKETTE™** : PORTABLE WORK LIGHT
- 3 **THE STRIKER™** : PORTABLE INSPECTION DROP/WORK LIGHT
- 4 **BODYLIGHT™** : RECHARGEABLE EXPLOSION PROOF LIGHT
- 5 **BRICKSKID™** : ZERO-EMISSIONS EXPLOSION PROOF LIGHT TOWER

Ordinary Location | LED Light

- 6 **LINKALIGHT™** : LED STRINGER LIGHT SYSTEM

Abrasive Blast | LED Light

- 7 **3475™** : LED BLAST LIGHT



 Designed + Manufactured in the USA

SEE THE DIFFERENCE

Redefining Portable Lighting



Western Technology builds portable lights trusted for their “tool-like” reliability. They set a new standard of excellence:

Reduce Job Site Safety Risks

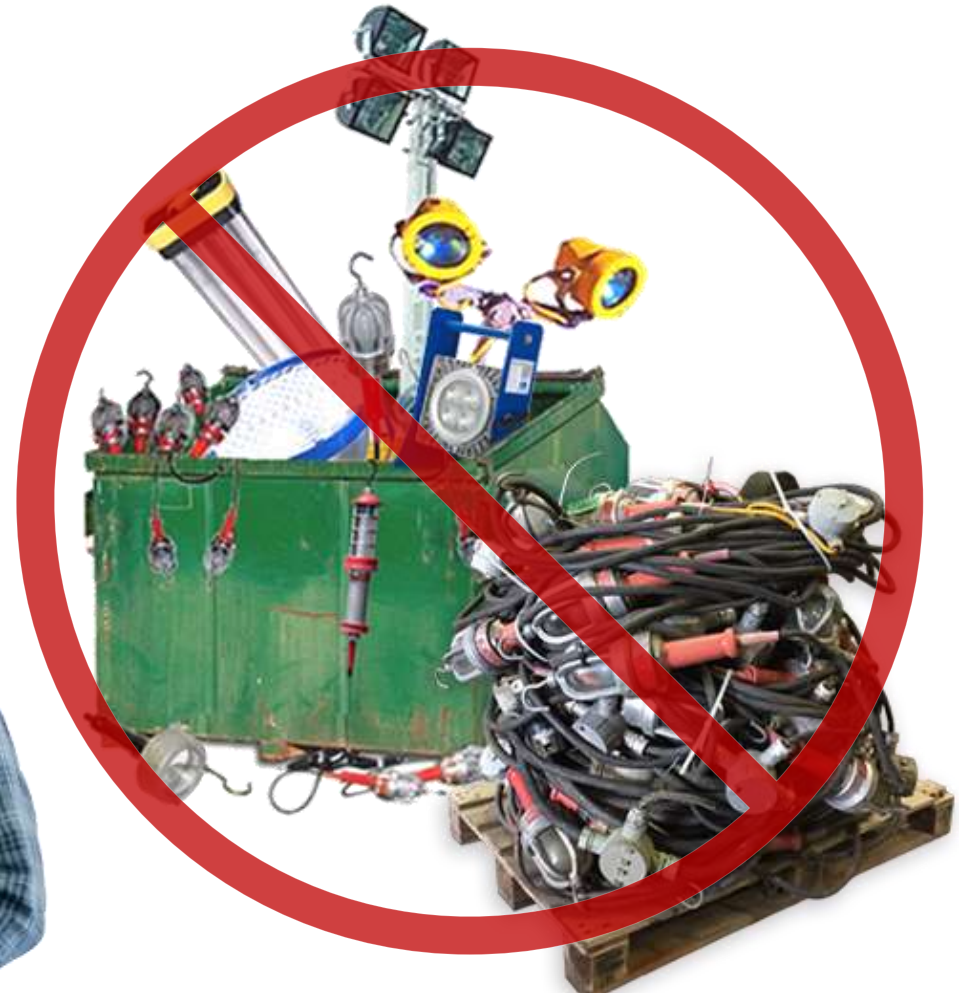
- accidents caused by lights failing or breaking

Easy-to-Calculate ROI

- reduction of number of Lights required
- reduction in installation/removal time
- minimal maintenance
- reduction in cost to operate
- improved productivity
- reduced CO₂ emissions

“We Won’t Leave You in the Dark”

Ask about
Scheduling a Demo
& *Rental Availability
1-800-654-5483
CALL US TODAY!



 Designed + Manufactured in the USA

**See page 45 for more information on rental availability*

SAFETY BEYOND CERTIFICATION

Proven Reliability Under Extreme Conditions



Our Explosion Proof Line of **KICK-IT TOUGH™** LED Safety Lights are **designed** to meet your most demanding workplace requirements. *Each light is purposely built:*

- For **SAFETY** and **CERTIFIED** for Hazardous Locations:
 - Class I, Division 1 & 2, Groups C & D
 - Class II, Division 1 & 2, Groups E, F, & G
 - CSA Zones 1, & 2; Zones 20, 21, & 22
 - Constant thermal monitoring for maintaining safe T-code temperature
- For **WET LOCATION**: Watertight and certified
(Our lights have been tested up to 100 psi, so you can operate them with confidence in wet environments)
- For **FLEXIBILITY**: Each system of lights has versatile magnetic/mechanical mounting options.
- For **VISUAL AID**: Choices include light shielding, light projection, light diffusion, color temperature control
- For **PROTECTION**: Polyurethane bumpers wrapping the lights & optional safety straps.
- For **DURABILITY**: Constructed out of fully-machined solid blocks of aluminum.



"...We finished our project of removing all 8 tanks of fuel foam from our decommissioned static display today. I cannot explain how having that light in there helped with the safety and visual comfort doing the work..."

- SUPERINTENDENT
US AIR NATIONAL GUARD



WEATHER-PROOF LIGHTING

Proven Reliability in All Weather Conditions



Rated Type 6P

Submersible...depends on specified conditions of pressure and time; example use in quarries, mines, and manholes. Type 6 is temporarily submersible, Type 6P withstands occasional prolonged submersion. Neither are intended for continuous submersion

(Tested to 200 ft depth in Water for 72 hours)

Model 9610



**Bend Radius
Enforcement Sleeve**
Patent Pending

**Lumens+
Optics**

**GEN3
FEATURES**

Product Features

- **Certified for:**
 - Class I, Div. 1 & 2, Groups C & D
 - Class II, Div. 1 & 2, Groups E F, & G
 - CSA Zones 1 & 2; Zones 20, 21, & 22
- **Conforms to:**
 - UL Stds 153, 781, 844
- **Certified to:**
 - CSA Stds C22.2#s 12, 25, 137
- **Certified for:**
 - Wet Location Use
- **Certified as:**
 - Portable Luminaire
- **>11,500 Lumens;
50,000 Lux at 1 ft.**
- **Lighthouse Power:**
 - 36VDC, 2-3 Amps (A & C Models)



”

“We are in the middle of a turn around and they are using the one I have (the BRICK®) and they quoted, ‘This light is not a Cadillac, this light is a Lamborghini. Hopefully, this will help with getting things moving.’”

- ELECTRICAL SUPERVISOR



Designed + Manufactured in the USA



Blast Shield



Roll Top Anti-Glare Diffuser



High Dome Diffuser



**High Dome Diffuser
and Body Wrap**



**Replacement
Blast Shields (12 Pack)**



Paint Overspray Bags (50 Pack)



**Kit Option - Rolling Resin
Carrying Case**



**Various Cord Lengths
& Plug Options Available
(Shown w/ NATO Plug Option)**

 **Designed + Manufactured in the USA**



4 Mounting Locations



Mechanical or Magnetic Mounting Plates



Magnetic Knuckle



Magnetic/Mechanical Knuckle



Mechanical Knuckle



Quad Pod-Hand Cart Mechanical Knuckle



Quad Pod-Hand Cart Magnetic Knuckle



Magnetic Puck Mount



Ladder Mount



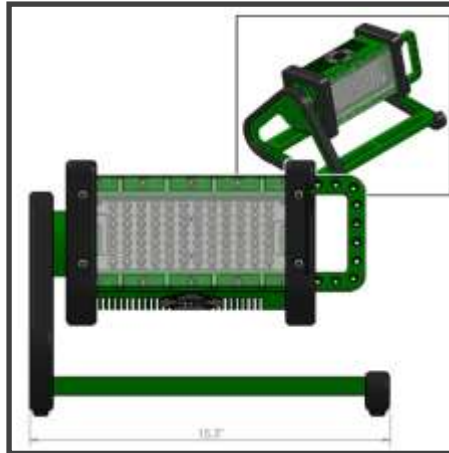
Tripod Mount [Base & 22" Riser]
(Shown with Magnetic Knuckle)



Hand Cart Mount
(Shown w/ 2 BRICKs, Double Yoke
Topper & Knuckles)



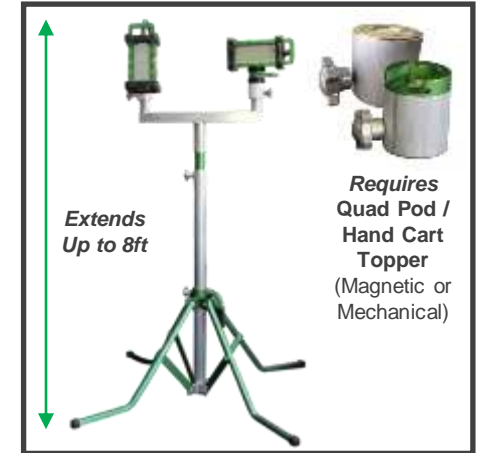
A-Frame



Modified A-Frame



BRICKCart™ | CDI Portable Light Cart
(flight line application)

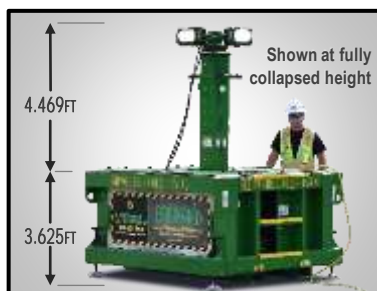


Quad Pod Mount
(Shown w/ 2 BRICKs, Double Yoke
Topper, Knuckle & Puck Mount)

 **Designed + Manufactured in the USA**

Product Features

- Zero Emissions
- No Noise
- No Drip Pans
- No Heat
- No Fueling/Re-Fueler
- Spark-Free Construction
- Secure Locker for Storage of Converter/Cables During Shipment
- Independent Aiming of each BRICK®
- Ability to Remove a BRICK®
 - (vessel entry / work light / independent rental)
- 360° Lighting of a +400ft Diameter Area
- Class 1 & 2, Div 1 Electronics/Plug receptacles
- Compact size: 6'x6', 2,250 lbs. retractable 17' mast
 - Note: 1,250 lbs. is ballast sealed in base for high wind/tip over protection
- Low Power Draw: 110/220VAC, 20 Amp
 - Powers 4 BRICKs + 1 extra Plug-in BRICK
- Reduce Tripping Hazards
 - Uses a SINGLE Plug-in cord
- *Options: Tow Bar/Rollers – Lifting Eyes – Ordinary Location Construction & Electronics



Designed + Manufactured in the USA

Model 2106



Product Features

- **Certified for:**
Suitable for simultaneous use in...
 - Class I, Div. 1 & 2, Groups C & D
 - Class II, Div. 1 & 2, Groups E F, & G
 - CSA Zones 1 & 2; Zones 20, 21, & 22
- **Conforms to:**
 - UL Stds 153, 8750, 844
- **Certified to:**
 - CSA Stds C22.2#s 12, 25, 30, 137, 250.13
- **Certified for:**
 - Wet Location Use, Type 6P
- **Certified as:**
 - Portable Luminaire
- **>2,500 Lumens;
26,000 Lux at 1 ft.**
- **Lighthead Power:**
 - LVLE: 21VDC, 800mA




**Lumens+
Optics**

**GEN3
FEATURES**

“The BRICKette™ is an engineering marvel. It exceeds all the expectation that our shop requires from it.”

- TANK MANUFACTURER



 Designed + Manufactured in the USA



Long Slotted Handle
(High Profile)



Short Slotted Handle
(High Profile)



Long Magnetic Handle
(High Profile)



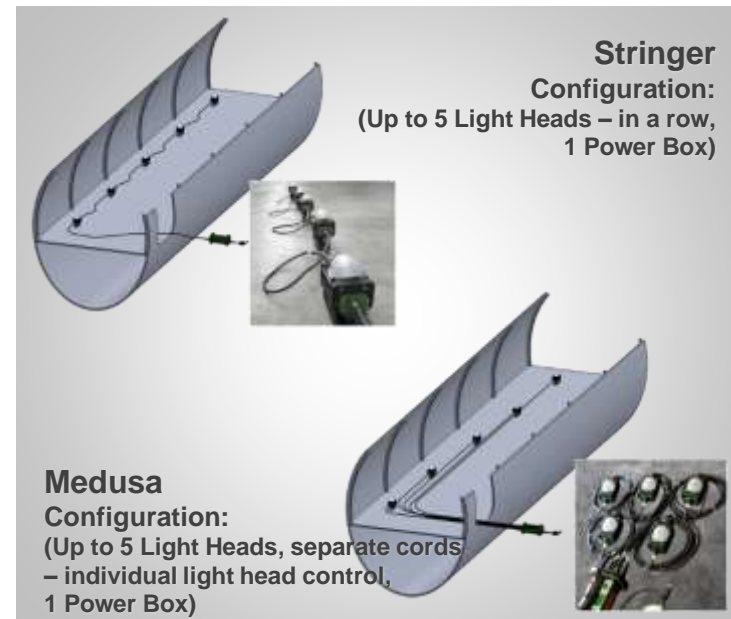
Long Slotted Handle
(Low Profile)



Short Slotted Handle
(Low Profile)



Long Magnetic Handle
(Low Profile)



Designed + Manufactured in the USA

VARIABLE LIGHT CONTROL

Rheostat Option



KICK-IT TOUGH™ LED Safety Lights are offered with a rheostat option to adjust illumination output.

Options Include:

- **Variable Light Intensity** – tune from low to maximum light output
- **Variable Light Color** – tune from low Kelvin temperature (e.g. 4000°K) to high Kelvin temperature (e.g. 7000°K)
- **Blended Spectral Emissions** – adjust spectral emission for specific utility, such as usage in different atmospheres or illumination of varying substrate color



 Designed + Manufactured in the USA

Portable Explosion Proof Inspection LED Work / Drop Light



Model 8100



Short Handle Drop Light
(Shown with Hook Mount & Dome Diffuser)

Replaceable Lenses

Long Handle Inspection/Work Light



The STRIKER™
Solid State Short Handle
various cord lengths
Non-Explosion Proof Power Box
[Explosion Proof Power Box Available]
various plug options



The STRIKER™
All-in-One Long Handle
various cord lengths
various plug options
[shown w/ dome diffuser & Nato Plug Option]

Product Features

- **Certified for:**
 - Class I, Div. 1 & 2, Groups C & D
 - Class II, Div. 1 & 2, Groups E F, & G
 - CSA Zones 1 & 2; Zones 20, 21, & 22
- **Conforms to:**
 - UL Std's 153, 8750, 781, 844
- **Certified to:**
 - CSA Std's C22.2#s 12, 25, 137
- **Certified for:**
 - Wet Location Use
- **Certified as:**
 - Portable Luminaire
- **>2,100 Lumen;
45,000 Lux at 1 ft.**
 - 25° collimating (refractive) optic
- **Lighthouse Power:**
 - LVLE- 21VDC, 800mA, (A & C Models)
 - 120VAC, 3A (B Model)



Designed + Manufactured in the USA

Model 8910



Lumens+
Optics



Product Features

- **Certified Explosion Proof**
under UL844 by Intertek for use in...
 - Class I, Div. 1 & 2, Groups C & D;
 - Class II, Div. 1 & 2, Groups E, F, & G;
 - CSA Zones 1 & 2; Zones 20, 21, & 22;
 - Suitable for Wet Location use: Type 6P
- * Approved for Light Head, Battery Pack & Battery Manifold
- **Emitter Type (Visible Mode):**
 - COB LED / CCT: 5700°K
- **Light Output (lumens/runtime):**
 - High (task): 2,500 lm / ~3.5 hrs
 - Medium (work): 1,250 lm / ~7 hrs
 - Low (passage): 625 lm / ~14 hrs
 - Flash Modes (Medium-Low)
- **Glow-in-the-Dark Panels**
- **Battery-Powered**
 - Safe to switch out battery in Hazardous Locations, recharge time: ~2.5 hrs

Overspray Protections Bags Available



Designed + Manufactured in the USA

Model 8910UVA



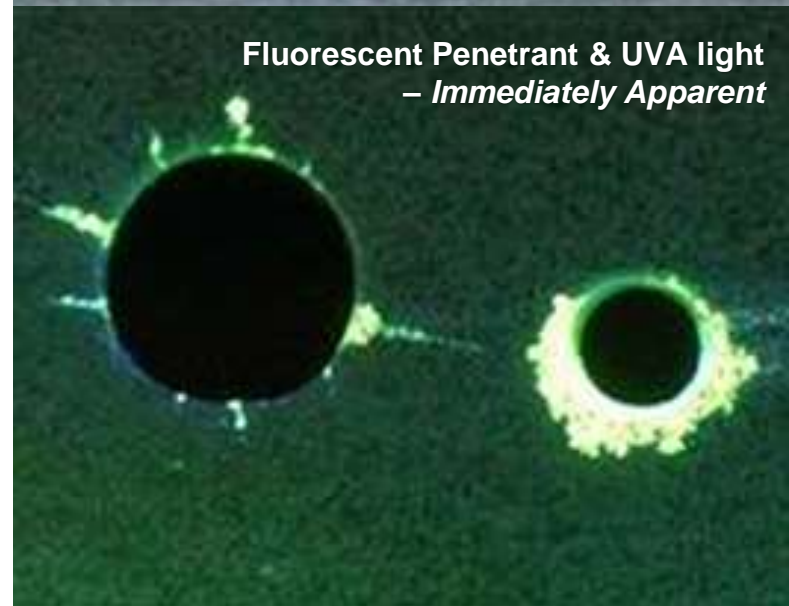
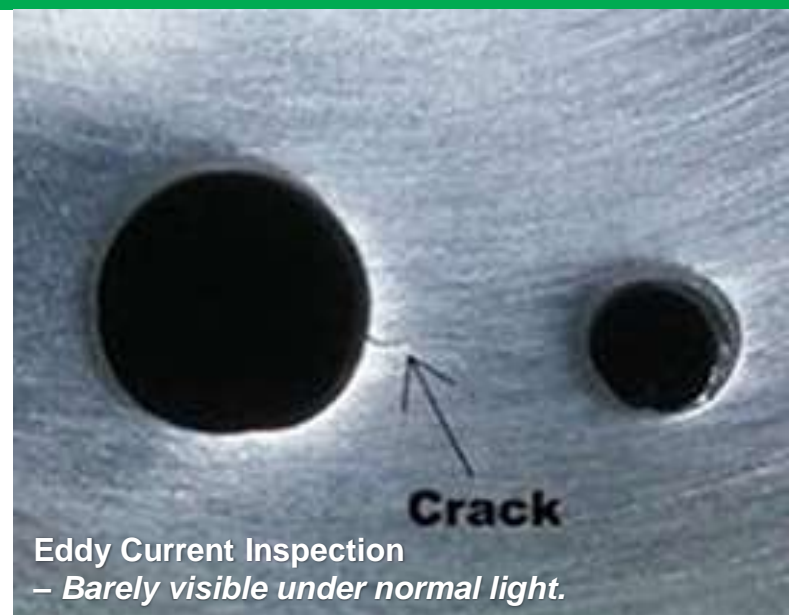
Detect FOD,
cracks, leaks,
microscopic
holes, paint
holiday &
defects.



Product Features

- Same Product Features as the *original* BODYLight™
- + *PLUS*
- Visible Mode & UVA Mode:
 - COB LED & 365nm UV LEDs
- Light Output Modes:
 - Visible: High, Medium, Low & Flash
 - UVA: High, Medium & Low
- UVA Activation Code:
 - May be programmed with a code to activate/ deactivate UVA function

Note: UVA option requires operator wear PPE and confirmation required training has been completed. UVA 365nm can be hazardous to human health with extended unprotected exposure.



Designed + Manufactured in the USA

Model 8910UVC



full kit comes
with convenient
Carrying Case



Shown with
Bristle Cone
attachment

Product Features

- Same Product Features as the *original* BODYLight™
- Except Only Emits -
 - UVC Wavelength: 275nm Peak
 - "Red" LEDs for visible assistance
- UVC Output Power
 - at Bristle Cone: ~2.5 mW/cm²
- Bristle Cone
 - Provides a quick reference for the user as to the effective sanitizing field distance from a surface & protect from scattered UVC light to the user and vicinity.

**1 WT GERM KILLER®
kills germs & viruses
almost immediately
(when held 4" from a hard surface)**



Note: UVC option requires operator wear PPE and confirmation required training has been completed. UVC 265nm can be hazardous to human health with extended unprotected exposure.



¹ It has been shown that a 1-second exposure of 265nm UVC light at 1.93 mW/cm² was sufficient to induce a 100% germicidal effect on microorganisms. (Note: 262nm UVC radiation has been shown to be the peak germicidal wavelength.) Dean SJ, Petty A, Swift S, et al. "Efficacy and safety assessment of a novel ultraviolet C device for treating corneal bacterial infections." *Clin Experiment Ophthalmol.* 2011; 39(2):156-163. [PubMed: 21105972]



Designed + Manufactured in the USA



With >20,000 hours of maintenance free operation,
the UVC BODYLIGHT™ will have sanitized over
8,369,000 square feet of surface area
from 4" away!

8910 UVC BODYLIGHT™

Only ~15¢ per hour
to operate!

**KILLS COVID-19 IN
JUST OVER 1 SECOND!**

No Flammable Chemicals
No Toxic Residuals
No Long Wait Time

VS

GRACO® SANISPRAY HP20
Costs >\$10.84 per hour
to operate!

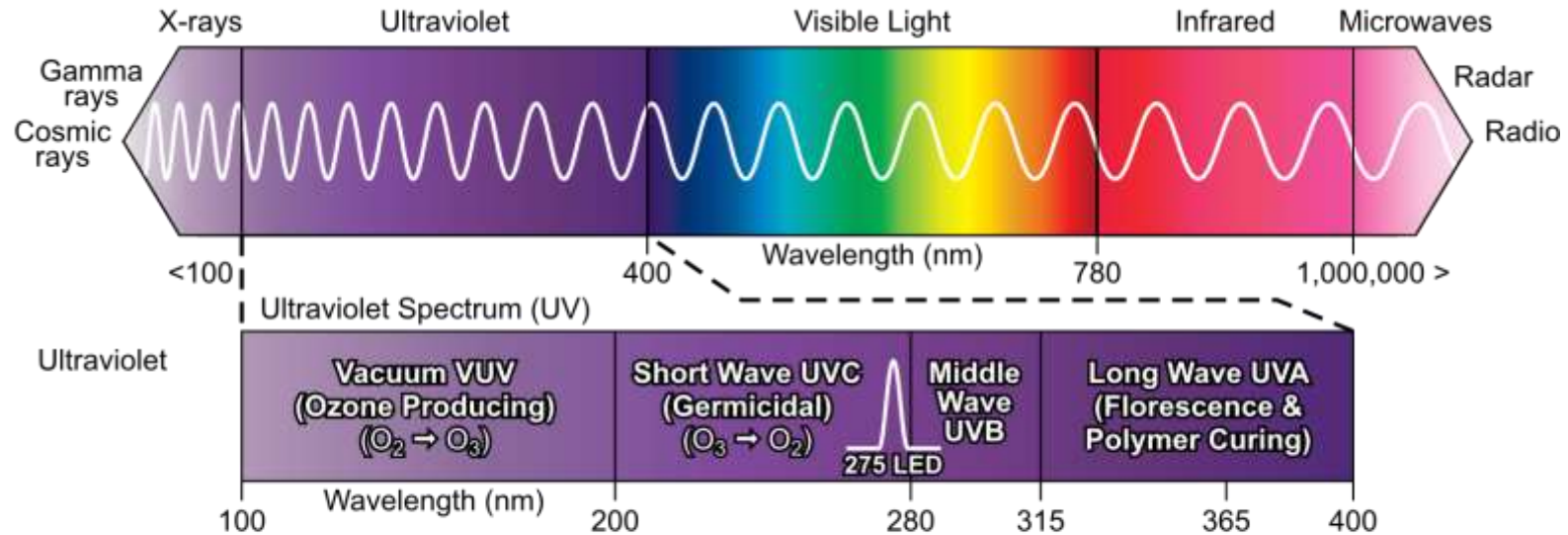
(service-partners.com/sanitize-disinfect/)

Requires 10 minutes to Kill COVID-19
CONCROBIUM® BROAD SPECTRUM DISINFECTANT II
Minimum surface wet-time of 10 minutes, per CDC cleaning guidelines.

Over \$216,000 spent on sanitizing liquid alone to disinfect 8,369,000 square feet!
Requiring over 8,369 gallons of disinfectant!

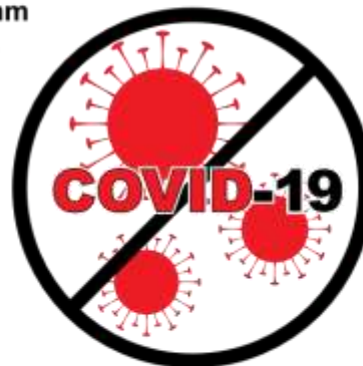


ELECTROMAGNETIC SPECTRUM



UVC light reacts with DNA/RNA killing COVID-19 and other microorganisms.

UVC breaks apart nucleic acid and forms dimers of C-C, T-T, and U-U, distorting the DNA/RNA molecule.



Requires 1.2-1.9 mJ/cm² irradiance of UVC light to deactivate COVID-19



Dimers formed create a "bulge" in the RNA that stops its replication.

Model 4400



Product Features

- **Light Output:**
 - Variable Intensity Control (Dimmer): with continuous range of Luminous Flux:
 - 600 to +6,000 lumens
- **Brightness:**
 - ~4,000 Lux to ~400 Lux @ 1ft
- **Power Input:**
 - 120-277 VAC, 50/60 Hz
- **Observed Beam Angle:**
 - ~100° (Floodlight Projection)
- **Options / Features:**
 - Able to Plug end-to-end
 - Daisy-chain lights together up to 250 ft
 - Blast Shields, Diffusers, Dome Diffusers
 - Variety of Mounting options available



CDI using LINKaLIGHT™ to illuminate nose wheelwell of plane



Designed + Manufactured in the USA



Magnetic Mounting
(150 lbs of Pull
Industrial Strength)

4100LED
Mountable LED Area
Light (3-Way Lamp)



4210LED
Mountable LED
Work Light
(Single Lamp)

Product Features

- Temporary Jobsite Lighting
for Ordinary Locations (Non-HazLoc)
- 150lbs-pull Magnets
*(industrial strength)
for quick & sure placement*
- Durable Polyurethane Construction
- Uses PAR38 LED Bulbs
- 12-24V AC/DC *or*
- 115V AC available



SITE LIGHTs
Quad Pod Topper



Designed + Manufactured in the USA



**Lumens+
Optics**



Model 3475-80LW

Light Weight
All Delrin Body



**Replaceable
Blast Lenses**
(Box of 12)



Model 3475-80/SX*

[Complete System Option]
(LED Blast Light, Cable, Power Box, & Plug)

*X = Various cable length

Product Features

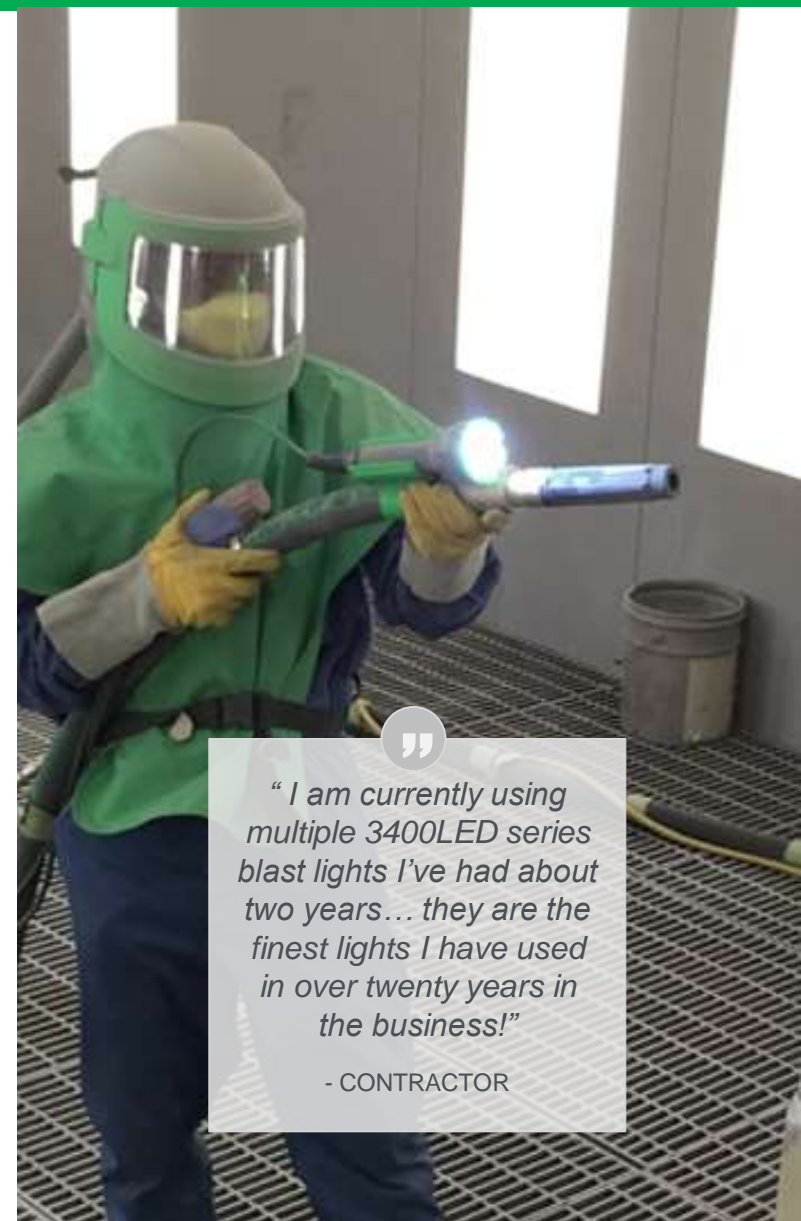
- **Light Output:**
 - 1,325 Lumens; 3,110 Lux @ 48"
- **Spotlight Projection:**
 - 18° Refractive Optic Design
- **Voltage Options:**
 - 3475-80: 12-24V AC/DC
 - 3475-80/S: 110-220V AC
- **Housing & Weight:**
 - 3475-80: ~2LB – Aluminum Body, Polyurethane-wrapped & Bumper
 - 3475-80LW: ~1LB – Delrin Body, Polyurethane Bumper
- **Replacement Parts:**
 - Pyrex Blast Lenses (Box of 12)
 - Polycarbonate Lenses (Box of 12)
 - Halo Bumpers
 - High & Low Stanchions
 - Polycarbonate Lenses



Model 3475-80/X* 16.2 TLP

[Complete System Option]
(LED Blast Light, 16/2 EC Green Cable, Twist Lock Plug)

*X = Various cable length



“I am currently using multiple 3400LED series blast lights I’ve had about two years... they are the finest lights I have used in over twenty years in the business!”

- CONTRACTOR



Designed + Manufactured in the USA

ABRASIVE BLAST LIGHTS

Available from Western Technology

**ABRASIVE
BLAST
LIGHTING**



Model 3475-80
KICK-IT TOUGH™
LED Blast Light



Model 3500LED
Field Repairable
Blast Light



Model 3510LED
Field Repairable
Helmet Light



Model 3300
Air-Cooled Polyurethane
Halogen Blast Light



Model 3600
Halogen No-Air
Aluminum Blast Light



Designed + Manufactured in the USA

WTF Western
Technology

1 (800) 654-5483
www.WesternTechnologyLights.com

24

DEADMAN CONTROLS

2-Wire, 3-Wire & 4-Wire configurations

**DEADMAN
CONTROL
SWITCHES**

Included with each:
(unique ball & chain designed
for safety and ease of use)



1001-REP-3K:
3-Wired Repairable
Electric Deadman Control
(Abrasive Blast)



1001-4K:
2-Wired Sealed
Electric Deadman Control
(Abrasive Blast)



1001-REP-K:
2-Wired Repairable
Electric Deadman Control
(Abrasive Blast)



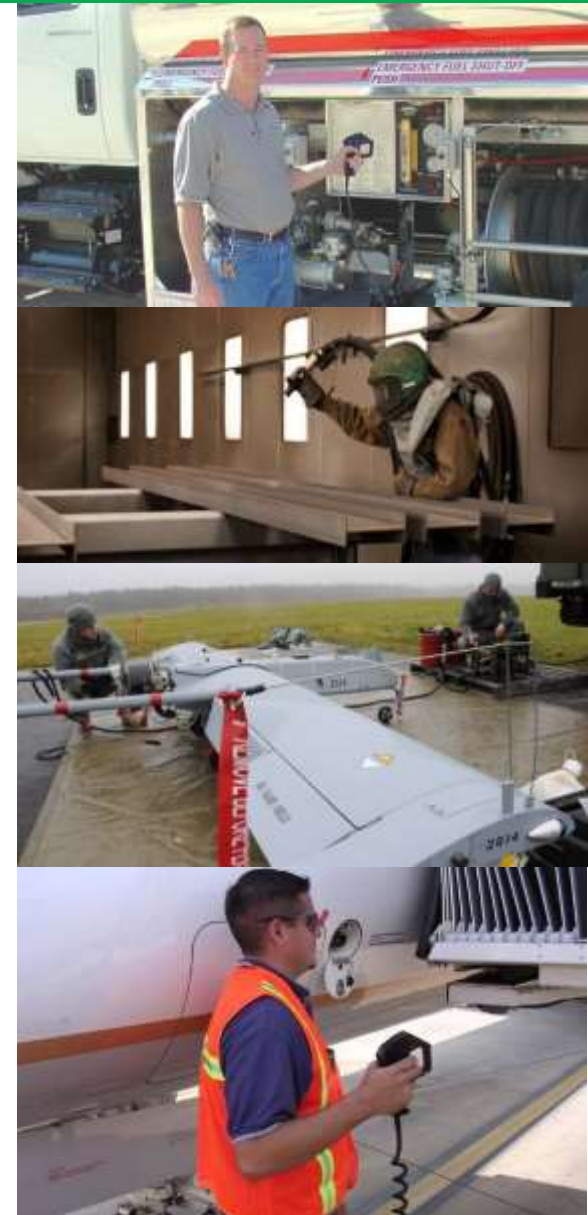
1004HC Wrist-EZ:
Repairable
Electric Deadman Control
(Abrasive Blast)



Apollo4:
4-Wired Sealed
Electric Deadman Control
(Abrasive Blast)



1003 Pistol Grip:
2-Wired Sealed
Electric Deadman Control
(Fueling, Runway Control, Drone launch)



Designed + Manufactured in the USA

ALSO AVAILABLE

Conventional Battery-Powered Flashlights & Headlamps



Model 99220
LED Rechargeable Flashlight
"The SPOTTER™"



Model 7475
Rechargeable Industrial
LED Flashlight



Model 7471
Rechargeable LED Spotlight
(IP67 – floats & submersible)



Model 7460
Intrinsically Safe
Rechargeable LED
Flashlights (Spotlight)



Model 7465
Intrinsically Safe
Rechargeable LED
Flashlights (Floodlight)



Model 7710
HALO LED
Hard Hat Light



Model 7445
Intrinsically Safe
3AA LED Headlight



Model 7701HD
Intrinsically Safe
LED Headlamp



Model 7704
Intrinsically Safe
Multi-Function Headlamp

OIL & GAS

Exploration, Production & Maintenance



”

“Immediately after receiving the first light we ordered, I requested a second one as the performance was absolutely incredible.

“The light has been a big hit on the rig and other departments are always asking to borrow ours. I plan on ordering several others for them. The magnetic knuckle really makes tank entry a breeze.

“Please keep in contact with us, especially if you have any new products that are generated. Thanks for all your help!”

- SHIP'S CHIEF MATE

OFFSHORE DRILLING RIGS

Lighting for Confined Spaces & Hazardous Locations



The BRICK®
Illuminating
Interior of
Inflatable
Enclosure
for Hot Work
on Offshore
Oil Rigs

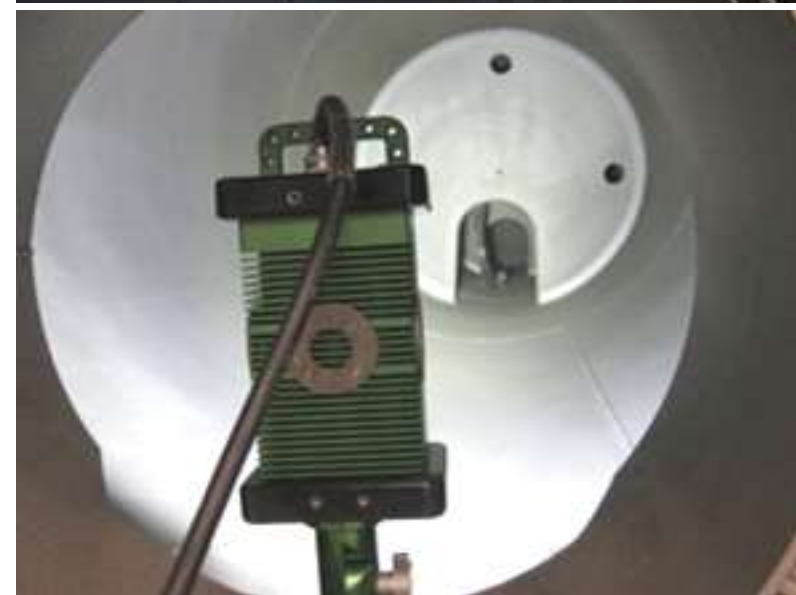


Hydro-Blasting Interior of Jack Up Leg



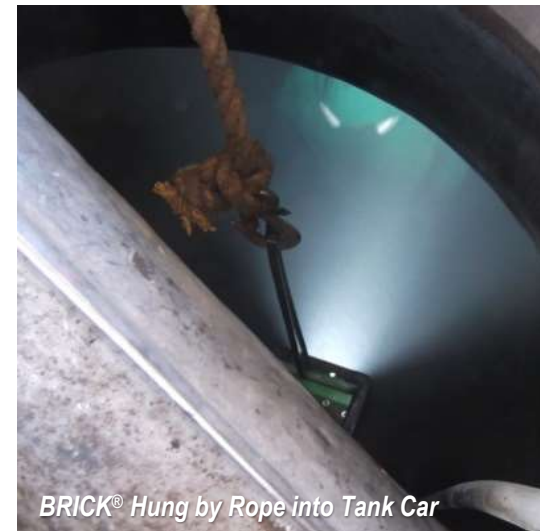
STORAGE TANKS & TRAILERS

Fabrication & Maintenance



RAILCAR

Manufacturing, Maintenance & Inspection

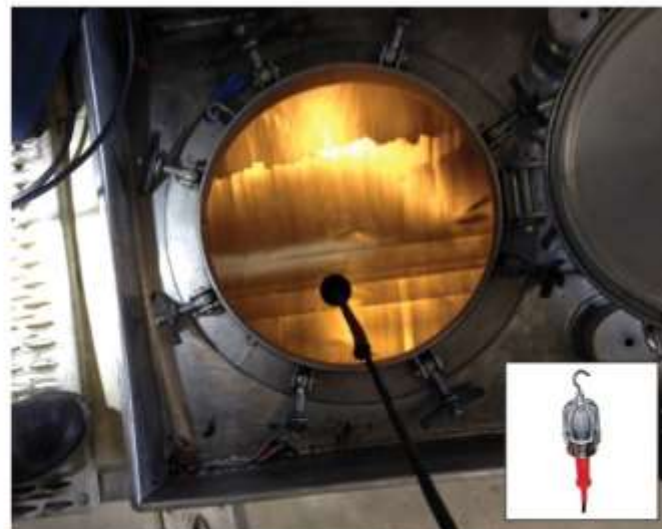


CHEMICAL TANKS

Manufacturing, Maintenance & Inspection



Inspecting Chemical Tank: No Light



Inspecting Chemical Tank : Incandescent Light



Inspection Chemical Tank: The STRIKER™

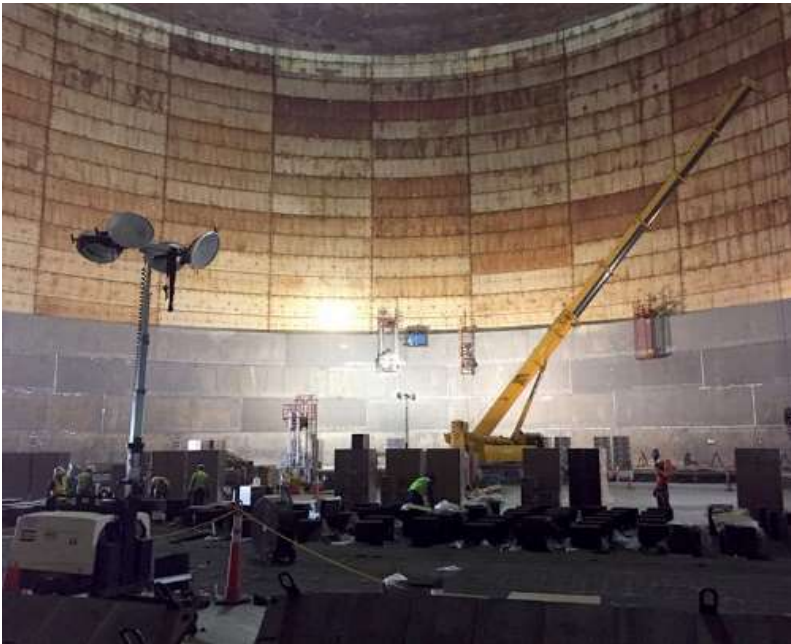
CHEMICAL PLANTS & REFINERIES

Construction, Maintenance & Inspection



"...We utilized the 9610C - Explosion Proof LED light head (BRICK®). I have included some pictures...from inside our Hot Lime Softener & Line Cleaning, Flare Knockout Drum & Flow Splitter. We had excellent feedback on the BRICK® Light, everyone who used it was very impressed with the illumination & portability. We are going to use them again in the upcoming Plant Shutdown May 2014. Stay tuned for more feedback!!"

- REFINERY CUSTOMER



BRICK®
Lighting Flare Knockout Drum



BRICK®
Inside Flow Splitter



BRICK®
Lighting Hot Lime Softener & Line

ELECTRIC POWER PRODUCERS

Coal, Nuclear, Hydro, Natural Gas & Wind



UTILITY WORK

Gas | Water | Power



"Here are the responses I've received on the BRICK's® performance:

Portability: Does not need to be on a stand.

Durability: Can be accidentally knocked over and still performs.

Light output: Outstanding.

Adapters: Stands, tripods, etc are all well made.

Heat Sink: Unit cools quickly and can be stored without much down time.

Cord: Strong & long enough to meet the demands of the field.

Overall the best outside lighting in/out of a gaseous atmosphere anyone has used."

- DISTRIBUTOR FOR GAS CUSTOMERS



BRICK®
Knuckle Mounted to Backhoe



MARINE

Ship Building, Repair & Maintenance



Visitors from US Navy facility, Japan



AVIATION & AEROSPACE

Aircraft Manufacturing & Maintenance



Wing Repair
Jakarta



NASA Artemis
Rocket Project



BRICK® lights used
upper fuselage



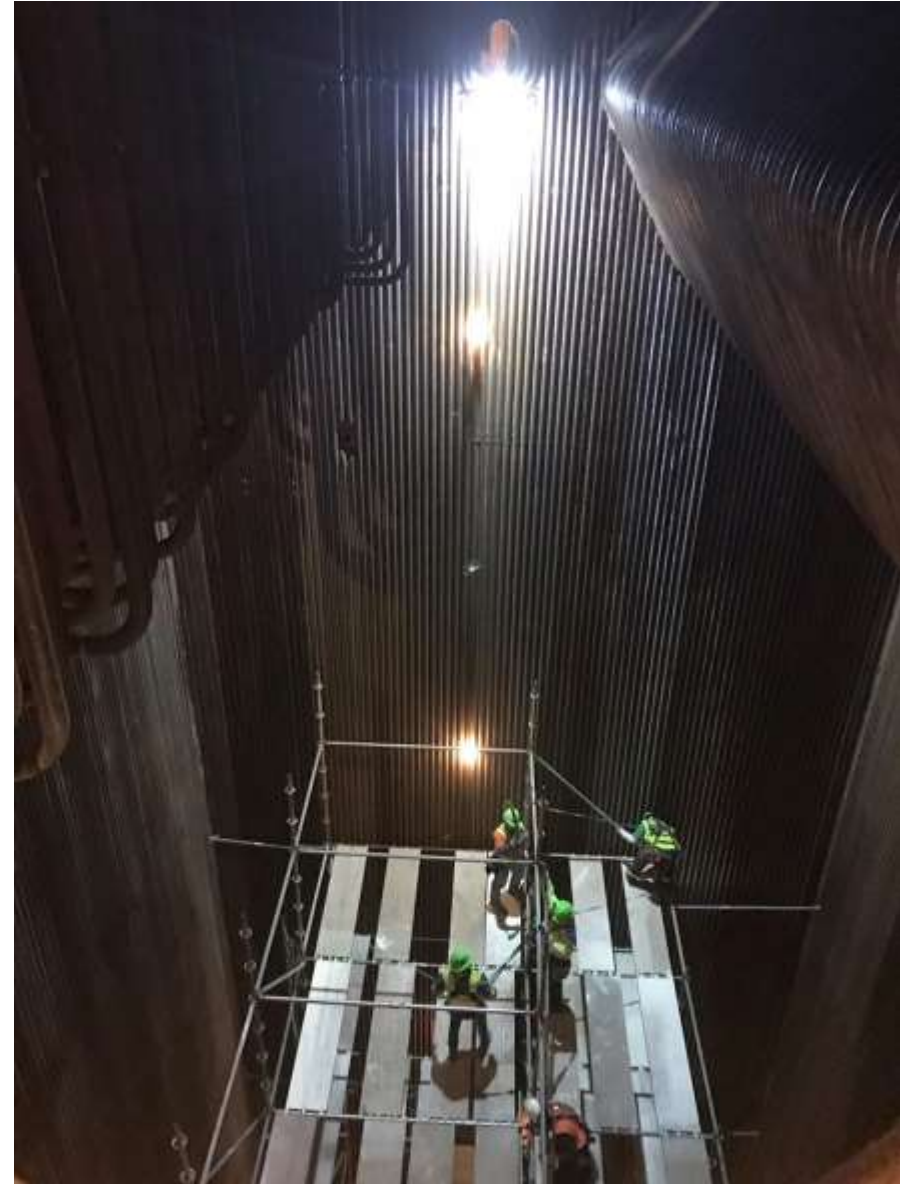
BRICK® lights used
lower fuselage



Helicopter Tail
FOD inspection

LARGE AREA SCAFFOLDING WORK

High Performing & Reliable Lighting with Easy-to-Position Mounting Options



IMPRESSIVE AREA LIGHT

The BRICK® Illuminating a Mill at 200 Feet - powered by truck battery!

“The BRICK® lights worked well in our application and we are very satisfied with their performance. We will use them in the future for this job.”

- CONTRACTOR

BRICK® - OFF

BRICK® - ON



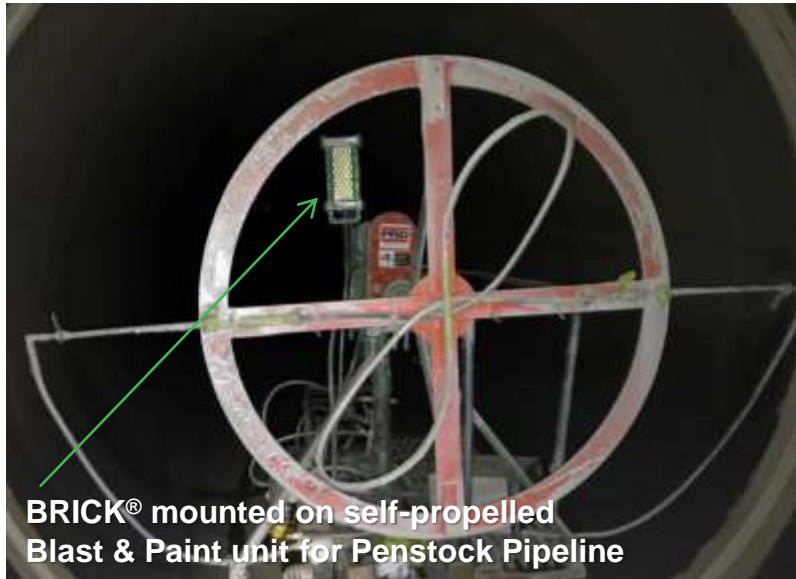
CONTAINMENT/CONSTRUCTION

Lighting for Confined Spaces



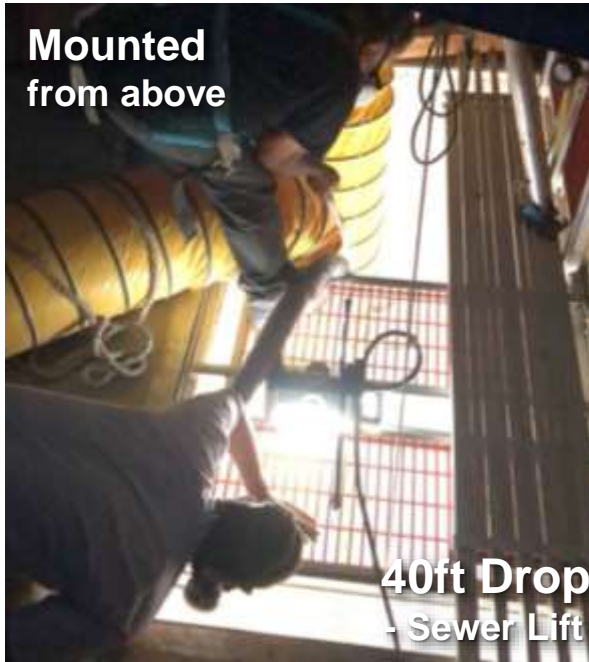
CONTRACTORS/FABRICATORS

Abrasive Blasting, Coating, Painting & Hydro-blasting



WATER & WASTEWATER TREATMENT

Wet Location Certified Lighting



**Mounted
from above**

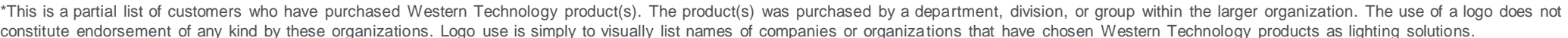
**40ft Drop Space
- Sewer Lift Station -**



**“...it was like working
in Daylight”**



***List of Customers who have purchased Western Technology Product(s)**



PETRO CHEMICAL/REFINERIES

***List of Customers who have purchased Western Technology Product(s)**



Imperial Oil



Marathon
Petroleum Corporation



bp



FLINT HILLS
resources



EASTMAN



ConocoPhillips



ExxonMobil



GAS DISTRIBUTORS

***List of Customers who have purchased Western Technology Product(s)**



*This is a partial list of customers who have purchased Western Technology product(s). The product(s) was purchased by a department, division, or group within the larger organization. The use of a logo does not constitute endorsement of any kind by these organizations. Logo use is simply to visually list names of companies or organizations that have chosen Western Technology products as lighting solutions.

RENTALS AVAILABLE

Tight Budget? Rent Our Portable Work Lights.

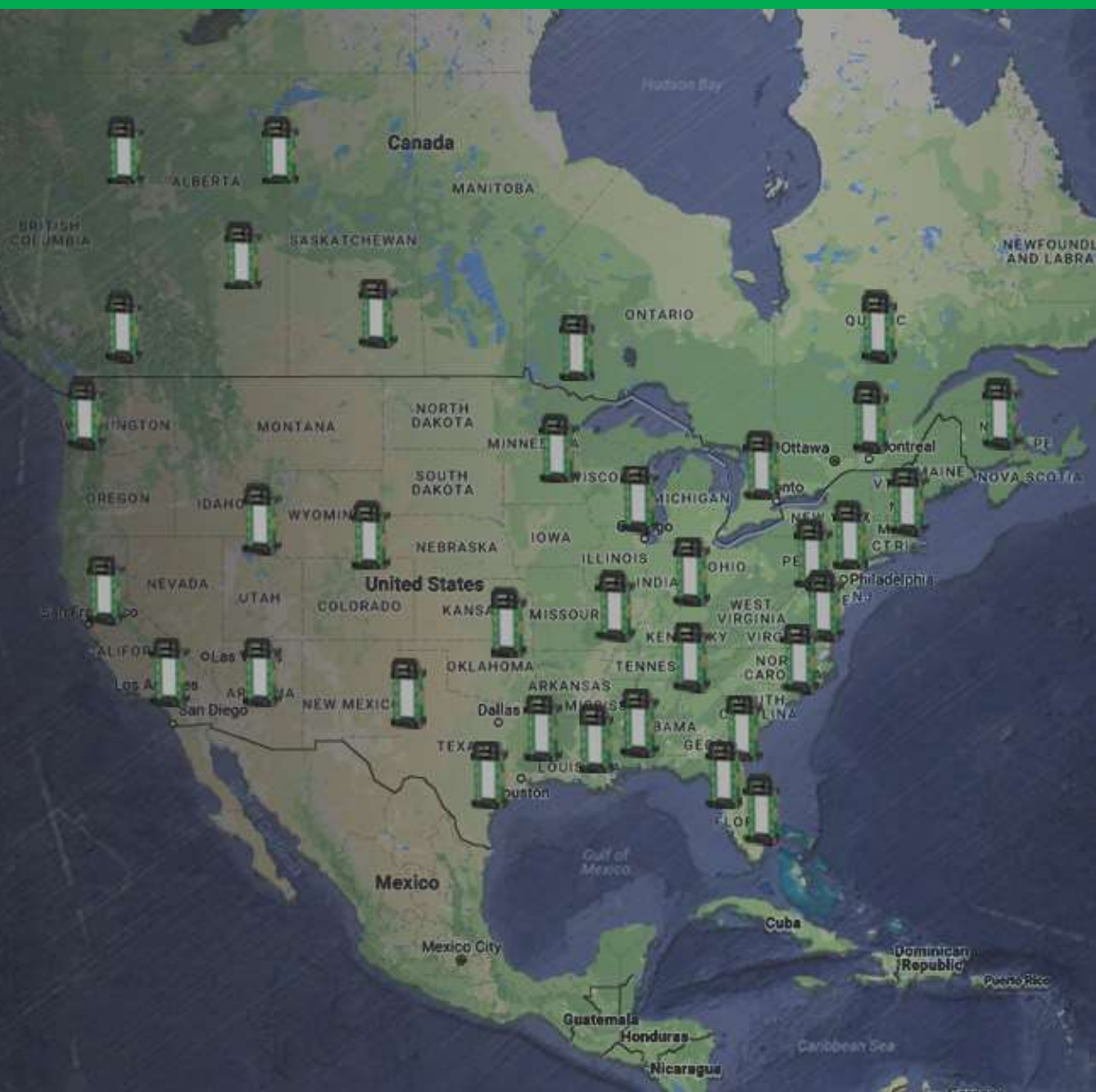
1-800-654-5483

Call TODAY for
Rental Availability
in your area

Network of Distributors and Rental Partners Across North America

Our Portable LED Work Lights, known for their “tool-like” reliability, are also available for rent.

We have a network of distributors and rental partners across the U.S. and Canada. This is a cost-effective way to work with our portable LED work lights. Call us today to see if rentals are available in your area.



THERE'S A BETTER SOLUTION

Benefits of Switching to Western Technology, Including Rentals



BRICKSKID™

Benefits of Switching

Product Features

- Zero Emissions
- No Noise
- No Drip Pans
- No Heat
- No Fueling/Re-Fueler
- Spark-Free Construction
- Secure Locker for Storage of Converter/Cables During Shipment
- Independent Aiming of each BRICK®
- Ability to Remove a BRICK®
 - (vessel entry / work light / independent rental)
- 360° Lighting of a +400ft Diameter Area
- Class I & II, Div 1&2 Electronics/Plug receptacles
- Compact size: 6'x6', 2,250 lbs. retractable 17' mast
 - Note: 1,250 lbs. is ballast sealed in base for high wind/tip over protection
- Low Power Draw: 110/220VAC, 20 Amp
 - Powers 4 BRICKs + 1 extra Plug-in BRICK
- Reduce Tripping Hazards
 - Uses a SINGLE Plug-in cord
- *Options: Tow Bar/Rollers – Lifting Eyes – Ordinary Location Construction & Electronics



THE **BRICK**
by Western Technology

lights are fabulous!

I have received feedback from 4 of the divisions that have them. They do feel safer, don't have to call rental companies for light towers (no down time)."

- Gas Distribution Utility Customer

BRICK Skid extends up to 17ft

TESTIMONIALS

See What Our Customers Have to Say



"We are in the middle of a turn around and they are using the one I have (the BRICK®) and they quoted, 'This light is not a Cadillac, this light is a Lamborghini...'"

- ELECTRICAL SUPERVISOR



"The BRICK® lights worked well in our application and we are very satisfied with their performance. We will use them in the future for this job."

- CONTRACTOR



"The BRICKette™ is an engineering marvel. It exceeds all the expectation that our shop requires from it."

- TANK MANUFACTURER



"I am currently using multiple 3400LED series blast lights I've had about two years... they are the finest lights I have used in over twenty years in the business!"

- CONTRACTOR



"It is without a doubt, every time I needed an innovative solution for a lighting application, Western Technology Lighting committed to meeting the requirement and delivered! As requested, on schedule, no issues! The WTL products, the team, the culture is impressively focused on meeting the customers requirements".

-TODD A. CANTERBURY, SYSTEMS ENGINEER, 2005-2020
THE BOEING COMPANY



1 (800) 654-5483

www.WesternTechnologyLights.com